

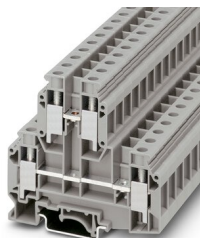
# UKKB 10 - Double-level terminal block



2772077

<https://www.phoenixcontact.com/us/products/2772077>

Please be informed that the data shown in this PDF document is generated from our online catalog. Please find the complete data in the user documentation. Our general terms of use for downloads are valid.



Double-level terminal block, nom. voltage: 500 V, nominal current: 57 A, connection method: Screw connection, 1st and 2nd level, Rated cross section: 10 mm<sup>2</sup>, cross section: 0.5 mm<sup>2</sup> - 16 mm<sup>2</sup>, Rated cross section: 10 mm<sup>2</sup>, cross section: 0.5 mm<sup>2</sup> - 16 mm<sup>2</sup>, mounting type: NS 35/7,5, NS 35/15, NS 32, color: gray

## Your advantages

- Design width of just 10.2 mm

## Commercial data

Item number	2772077
Packing unit	1 pc
Minimum order quantity	1 pc
Sales key	BE12
Product key	BE1214
Catalog page	Page 474 (C-1-2019)
GTIN	4017918068240
Weight per piece (including packing)	44.254 g
Weight per piece (excluding packing)	44.254 g
Customs tariff number	85369010
Country of origin	TR

# UKKB 10 - Double-level terminal block



2772077

<https://www.phoenixcontact.com/us/products/2772077>

## Technical data

### Product properties

Product type	Multi-level terminal block
Number of connections	4
Number of rows	2
Potentials	2

### Insulation characteristics

Overvoltage category	III
Degree of pollution	3

### Electrical properties

Rated surge voltage	6 kV
Maximum power dissipation for nominal condition	1.82 W

### Connection data

Number of connections per level	2
Nominal cross section	10 mm <sup>2</sup>

### 1st and 2nd level

Screw thread	M4
Tightening torque	1.5 ... 1.8 Nm
Stripping length	11 mm
Internal cylindrical gage	B6
Connection in acc. with standard	IEC 60947-7-1
Conductor cross section rigid	0.5 mm <sup>2</sup> ... 16 mm <sup>2</sup>
Cross section AWG	20 ... 6 (converted acc. to IEC)
Conductor cross section flexible	0.5 mm <sup>2</sup> ... 10 mm <sup>2</sup>
Conductor cross section, flexible [AWG]	20 ... 8 (converted acc. to IEC)
Conductor cross-section flexible (ferrule without plastic sleeve)	0.5 mm <sup>2</sup> ... 10 mm <sup>2</sup>
Flexible conductor cross section (ferrule with plastic sleeve)	0.5 mm <sup>2</sup> ... 6 mm <sup>2</sup>
2 conductors with same cross section, solid	0.5 mm <sup>2</sup> ... 6 mm <sup>2</sup>
2 conductors with same cross section, flexible	0.5 mm <sup>2</sup> ... 4 mm <sup>2</sup>
2 conductors with same cross section, flexible, with ferrule without plastic sleeve	0.5 mm <sup>2</sup> ... 6 mm <sup>2</sup>
2 conductors with the same cross section, flexible, with TWIN ferrule with plastic sleeve	0.5 mm <sup>2</sup> ... 6 mm <sup>2</sup>
Nominal current	57 A
Maximum load current	76 A (with 16 mm <sup>2</sup> conductor cross section)
Nominal voltage	500 V
Nominal cross section	10 mm <sup>2</sup>
Screw thread	M4
Tightening torque	1.5 ... 1.8 Nm
Stripping length	11 mm

# UKKB 10 - Double-level terminal block



2772077

<https://www.phoenixcontact.com/us/products/2772077>

Connection in acc. with standard	IEC 60947-7-1
Conductor cross section rigid	0.5 mm <sup>2</sup> ... 16 mm <sup>2</sup>
Cross section AWG	20 ... 6 (converted acc. to IEC)
Conductor cross section flexible	0.5 mm <sup>2</sup> ... 10 mm <sup>2</sup>
Conductor cross-section flexible (ferrule without plastic sleeve)	0.5 mm <sup>2</sup> ... 10 mm <sup>2</sup>
Flexible conductor cross section (ferrule with plastic sleeve)	0.5 mm <sup>2</sup> ... 6 mm <sup>2</sup>
2 conductors with same cross section, solid	0.5 mm <sup>2</sup> ... 6 mm <sup>2</sup>
2 conductors with same cross section, flexible	0.5 mm <sup>2</sup> ... 4 mm <sup>2</sup>
2 conductors with same cross section, flexible, with ferrule without plastic sleeve	0.5 mm <sup>2</sup> ... 6 mm <sup>2</sup>
2 conductors with the same cross section, flexible, with TWIN ferrule with plastic sleeve	0.5 mm <sup>2</sup> ... 6 mm <sup>2</sup>
Nominal current	57 A
Maximum load current	76 A (with 16 mm <sup>2</sup> conductor cross section)
Nominal cross section	10 mm <sup>2</sup>

## Dimensions

Width	10.2 mm
End cover width	1.5 mm
Height	77.5 mm
Depth on NS 32	78 mm
Depth on NS 35/7,5	73 mm
Depth on NS 35/15	80.5 mm

## Material specifications

Color	gray
Flammability rating according to UL 94	V0
Insulating material group	I
Insulating material	PA
Static insulating material application in cold	-60 °C
Temperature index of insulation material (DIN EN 60216-1 (VDE 0304-21))	130 °C
Relative insulation material temperature index (Elec., UL 746 B)	130 °C
Fire protection for rail vehicles (DIN EN 45545-2) R22	HL 1 - HL 3
Fire protection for rail vehicles (DIN EN 45545-2) R23	HL 1 - HL 3
Fire protection for rail vehicles (DIN EN 45545-2) R24	HL 1 - HL 3
Fire protection for rail vehicles (DIN EN 45545-2) R26	HL 1 - HL 3
Calorimetric heat release NFPA 130 (ASTM E 1354)	28 MJ/kg
Surface flammability NFPA 130 (ASTM E 162)	passed
Specific optical density of smoke NFPA 130 (ASTM E 662)	passed
Smoke gas toxicity NFPA 130 (SMP 800C)	passed

## Electrical tests

### Surge voltage test

Test voltage setpoint	7.3 kV
-----------------------	--------

# UKKB 10 - Double-level terminal block



2772077

<https://www.phoenixcontact.com/us/products/2772077>

Result	Test passed
--------	-------------

## Temperature-rise test

Requirement temperature-rise test	Increase in temperature $\leq 45$ K
Result	Test passed
Short-time withstand current 10 mm <sup>2</sup>	1.2 kA
Short-time withstand current 16 mm <sup>2</sup>	1.92 kA
Result	Test passed

## Power-frequency withstand voltage

Test voltage setpoint	1.89 kV
Result	Test passed

## Mechanical properties

### Mechanical data

Open side panel	Yes
-----------------	-----

## Mechanical tests

### Mechanical strength

Result	Test passed
--------	-------------

### Attachment on the carrier

DIN rail/fixing support	NS 32/NS 35
Test force setpoint	5 N
Result	Test passed

### Test for conductor damage and slackening

Rotation speed	10 rpm
Revolutions	135
Conductor cross section/weight	0.5 mm <sup>2</sup> / 0.3 kg
	10 mm <sup>2</sup> / 2 kg
	16 mm <sup>2</sup> / 2.9 kg
Result	Test passed

## Environmental and real-life conditions

### Needle-flame test

Time of exposure	30 s
Result	Test passed

### Ambient conditions

Ambient temperature (operation)	-60 °C ... 105 °C (max. short-term operating temperature RTI Elec.)
Ambient temperature (storage/transport)	-25 °C ... 60 °C (for a short time, not exceeding 24 h, -60 °C to +70 °C)
Ambient temperature (assembly)	-5 °C ... 70 °C
Ambient temperature (actuation)	-5 °C ... 70 °C

# UKKB 10 - Double-level terminal block



2772077

<https://www.phoenixcontact.com/us/products/2772077>

Permissible humidity (storage/transport)	30 % ... 70 %
--	---------------

## Standards and regulations

Connection in acc. with standard	IEC 60947-7-1
	IEC 60947-7-1

## Mounting

Mounting type	NS 35/7,5
	NS 35/15
	NS 32

# UKKB 10 - Double-level terminal block



2772077

<https://www.phoenixcontact.com/us/products/2772077>

## Drawings

Circuit diagram



# UKKB 10 - Double-level terminal block



2772077

<https://www.phoenixcontact.com/us/products/2772077>

## Approvals

To download certificates, visit the product detail page: <https://www.phoenixcontact.com/us/products/2772077>

<b>CSA</b> Approval ID: 13631				
	Nominal voltage $U_N$	Nominal current $I_N$	Cross section AWG	Cross section $\text{mm}^2$
	300 V	65 A	24 - 6	-

<b>CB</b> <b>IECEE CB Scheme</b> Approval ID: NL-39732				
	Nominal voltage $U_N$	Nominal current $I_N$	Cross section AWG	Cross section $\text{mm}^2$
	500 V	-	-	- 10

<b>EAC</b> Approval ID: RU C-DE.BL08.B.00534				
---	--	--	--	--

<b>KEMA-KEUR</b> Approval ID: 71-126336				
	Nominal voltage $U_N$	Nominal current $I_N$	Cross section AWG	Cross section $\text{mm}^2$
	500 V	-	-	0.5 - 10

<b>cULus</b> <b>cULus Recognized</b> Approval ID: E60425				
	Nominal voltage $U_N$	Nominal current $I_N$	Cross section AWG	Cross section $\text{mm}^2$
Use group B				
	300 V	65 A	24 - 6	-
Use group C				
	300 V	65 A	24 - 6	-
Use group F				
	500 V	65 A	24 - 6	-
Use group D				
	600 V	5 A	24 - 6	-

# UKKB 10 - Double-level terminal block



2772077

<https://www.phoenixcontact.com/us/products/2772077>

## Classifications

### ECLASS

ECLASS-11.0	27141120
ECLASS-13.0	27250102

### ETIM

ETIM 8.0	EC000897
----------	----------

### UNSPSC

UNSPSC 21.0	39121400
-------------	----------



# UKKB 10 - Double-level terminal block



2772077

<https://www.phoenixcontact.com/us/products/2772077>

## Environmental product compliance

China RoHS	Environmentally friendly use period: unlimited = EFUP-e
	No hazardous substances above threshold values

# UKKB 10 - Double-level terminal block



2772077

<https://www.phoenixcontact.com/us/products/2772077>

## Accessories

**i** Note: Applying some accessories below might limit this product.

### IS-K 10 - Bridge bar isolator

1303337

<https://www.phoenixcontact.com/us/products/1303337>



Bridge bar isolator, color: gray

### ISSBI 10-10 - Bridge

0301521

<https://www.phoenixcontact.com/us/products/0301521>



Bridge, pitch: 10 mm, number of positions: 10, color: silver

**i** Max. current carrying capacity: 50 A

# UKKB 10 - Double-level terminal block



2772077

<https://www.phoenixcontact.com/us/products/2772077>


## KB- 10 - Chain bridge

0203205

<https://www.phoenixcontact.com/us/products/0203205>



Chain bridge, pitch: 10 mm, number of positions: 1, color: silver

 Max. current carrying capacity: 70 A

---

## FBI 2-10 - Fixed bridge

0203483

<https://www.phoenixcontact.com/us/products/0203483>



Fixed bridge, pitch: 10 mm, number of positions: 2, color: silver

# UKKB 10 - Double-level terminal block



2772077

<https://www.phoenixcontact.com/us/products/2772077>


## FBI 10-10 - Fixed bridge

0203276

<https://www.phoenixcontact.com/us/products/0203276>

Fixed bridge, pitch: 10 mm, number of positions: 10, color: silver



 Max. current carrying capacity: 70 A

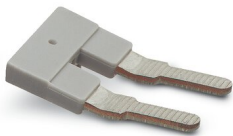
---

## EB 2-10 - Insertion bridge

0203153

<https://www.phoenixcontact.com/us/products/0203153>

Insertion bridge, pitch: 10 mm, number of positions: 2, color: gray



# UKKB 10 - Double-level terminal block



2772077

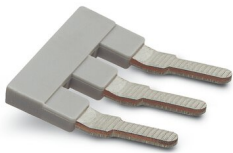
<https://www.phoenixcontact.com/us/products/2772077>

## EB 3-10 - Insertion bridge

0203328

<https://www.phoenixcontact.com/us/products/0203328>

Insertion bridge, pitch: 10 mm, number of positions: 3, color: gray



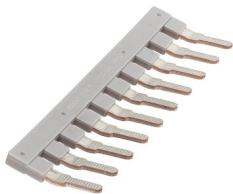
---

## EB 10-10 - Insertion bridge

0203137

<https://www.phoenixcontact.com/us/products/0203137>

Insertion bridge, pitch: 10 mm, number of positions: 10, color: gray



# UKKB 10 - Double-level terminal block



2772077

<https://www.phoenixcontact.com/us/products/2772077>

## SB 2-10/15 - Switching jumper

0203234

<https://www.phoenixcontact.com/us/products/0203234>

Switching jumper, pitch: 15 mm, number of positions: 2, color: silver



---

## D-UKKB 10 - End cover

3001394

<https://www.phoenixcontact.com/us/products/3001394>

End cover, length: 77.5 mm, width: 1.5 mm, height: 77.5 mm, color: gray



# UKKB 10 - Double-level terminal block



2772077

<https://www.phoenixcontact.com/us/products/2772077>

## WS 5-10 - Warning label

1004429

<https://www.phoenixcontact.com/us/products/1004429>

Warning label, Plate, yellow/black, labeled: Lightning flash and warning in English, mounting type: plug in, for terminal block width: 10 mm, diameter: 0 mm



---

## WS 4-10 - Warning label

1004225

<https://www.phoenixcontact.com/us/products/1004225>

Warning label, Plate, yellow/black, labeled: Lightning flash and warning in English, mounting type: plug in, for terminal block width: 10 mm, diameter: 0 mm



## UKKB 10 - Double-level terminal block

2772077

<https://www.phoenixcontact.com/us/products/2772077>



## KSS 10 - Short-circuit connector

0310541

<https://www.phoenixcontact.com/us/products/0310541>



Short-circuit connector, pitch: 10 mm, number of positions: 2, color: black

---

## SBS10:UNBEDRUCKT - Marker card

1007248

<https://www.phoenixcontact.com/us/products/1007248>



Marker card, Card, white, unlabeled, can be labeled with: Marker pen, perforated, mounting type: snapped, snap into flat marker groove, for terminal block width: 10 mm, lettering field size: 6 x 10.1 mm, Number of individual labels: 250



# UKKB 10 - Double-level terminal block

2772077

<https://www.phoenixcontact.com/us/products/2772077>



## SZS 1,0X4,0 VDE - Screwdriver

1205066

<https://www.phoenixcontact.com/us/products/1205066>



Screwdriver, slot-headed, VDE insulated, size: 1.0 x 4.0 x 100 mm, 2-component grip, with non-slip grip

---

## NS 32 PERF 2000MM-VPE 10 - DIN rail perforated

1201002

<https://www.phoenixcontact.com/us/products/1201002>



DIN rail perforated, acc. to EN 60715, material: Steel, galvanized, passivated with a thick layer, G profile, color: silver, Pack of 10 (20 m)

# UKKB 10 - Double-level terminal block

2772077

<https://www.phoenixcontact.com/us/products/2772077>



## NS 32 UNPERF 2000MM-VPE 10 - DIN rail, unperforated

1201015

<https://www.phoenixcontact.com/us/products/1201015>



DIN rail, unperforated, acc. to EN 60715, material: Steel, galvanized, passivated with a thick layer, G profile, color: silver, Pack of 10 (20 m)

---

## NS 35/ 7,5 PERF 2000MM - DIN rail perforated

0801733

<https://www.phoenixcontact.com/us/products/0801733>



DIN rail perforated, acc. to EN 60715, material: Steel, galvanized, passivated with a thick layer, Standard profile, color: silver, Pack of 25 (50 m)

# UKKB 10 - Double-level terminal block



2772077

<https://www.phoenixcontact.com/us/products/2772077>

## NS 35/ 7,5 UNPERF 2000MM - DIN rail, unperforated

0801681

<https://www.phoenixcontact.com/us/products/0801681>



DIN rail, unperforated, acc. to EN 60715, material: Steel, galvanized, passivated with a thick layer, Standard profile, color: silver, Pack of 25 (50 m)

---

## NS 35/ 7,5 WH PERF 2000MM - DIN rail perforated

1204119

<https://www.phoenixcontact.com/us/products/1204119>



DIN rail perforated, acc. to EN 60715, material: Steel, Galvanized, white passivated, Standard profile, color: silver, Pack of 25 (50 m)

# UKKB 10 - Double-level terminal block

2772077

<https://www.phoenixcontact.com/us/products/2772077>



## NS 35/ 7,5 WH UNPERF 2000MM-VPE 10 - DIN rail, unperforated

1204122

<https://www.phoenixcontact.com/us/products/1204122>



DIN rail, unperforated, acc. to EN 60715, material: Steel, Galvanized, white passivated, Standard profile, color: silver, Pack of 10 (20 m)

---

## NS 35/ 7,5 AL UNPERF 2000MM - DIN rail, unperforated

0801704

<https://www.phoenixcontact.com/us/products/0801704>



DIN rail, unperforated, acc. to EN 60715, material: Aluminum, uncoated, Standard profile, color: silver, Pack of 25 (50 m)

# UKKB 10 - Double-level terminal block

2772077

<https://www.phoenixcontact.com/us/products/2772077>



## NS 35/ 7,5 ZN PERF 2000MM - DIN rail perforated

1206421

<https://www.phoenixcontact.com/us/products/1206421>



DIN rail perforated, acc. to EN 60715, material: Steel, galvanized, Standard profile, color: silver, Pack of 25 (50 m)

---

## NS 35/ 7,5 ZN UNPERF 2000MM - DIN rail, unperforated

1206434

<https://www.phoenixcontact.com/us/products/1206434>



DIN rail, unperforated, acc. to EN 60715, material: Steel, galvanized, Standard profile, color: silver, Pack of 25 (50 m)

# UKKB 10 - Double-level terminal block

2772077

<https://www.phoenixcontact.com/us/products/2772077>



## NS 35/ 7,5 CU UNPERF 2000MM-VPE 10 - DIN rail, unperforated

0801762

<https://www.phoenixcontact.com/us/products/0801762>



DIN rail, unperforated, acc. to EN 60715, material: Copper, uncoated, Standard profile, color: copper-colored, Pack of 10 (20 m)

---

## NS 35/ 7,5 CAP - End cap

1206560

<https://www.phoenixcontact.com/us/products/1206560>

DIN rail end piece, for DIN rail NS 35/7.5



# UKKB 10 - Double-level terminal block

2772077

<https://www.phoenixcontact.com/us/products/2772077>



## NS 35/15 PERF 2000MM - DIN rail perforated

1201730

<https://www.phoenixcontact.com/us/products/1201730>



DIN rail perforated, similar to EN 60715, material: Steel, galvanized, passivated with a thick layer, Standard profile, color: silver, Pack of 25 (50 m)

---

## NS 35/15 UNPERF 2000MM - DIN rail, unperforated

1201714

<https://www.phoenixcontact.com/us/products/1201714>



DIN rail, unperforated, similar to EN 60715, material: Steel, galvanized, passivated with a thick layer, Standard profile, color: silver, Pack of 25 (50 m)

# UKKB 10 - Double-level terminal block



2772077

<https://www.phoenixcontact.com/us/products/2772077>

## NS 35/15 WH PERF 2000MM - DIN rail perforated

0806602

<https://www.phoenixcontact.com/us/products/0806602>



DIN rail perforated, similar to EN 60715, material: Steel, Galvanized, white passivated, Standard profile, color: white, Pack of 25 (50 m)

---

## NS 35/15 WH UNPERF 2000MM-VPE 10 - DIN rail, unperforated

1204135

<https://www.phoenixcontact.com/us/products/1204135>



DIN rail, unperforated, similar to EN 60715, material: Steel, Galvanized, white passivated, Standard profile, color: silver, Pack of 10 (20 m)



# UKKB 10 - Double-level terminal block

2772077

<https://www.phoenixcontact.com/us/products/2772077>



## NS 35/15 AL UNPERF 2000MM - DIN rail, unperforated

1201756

<https://www.phoenixcontact.com/us/products/1201756>



DIN rail, unperforated, similar to EN 60715, material: Aluminum, uncoated, Standard profile, color: silver

---

## NS 35/15 ZN PERF 2000MM - DIN rail perforated

1206599

<https://www.phoenixcontact.com/us/products/1206599>



DIN rail perforated, similar to EN 60715, material: Steel, galvanized, Standard profile, color: silver, Pack of 25 (50 m)

# UKKB 10 - Double-level terminal block

2772077

<https://www.phoenixcontact.com/us/products/2772077>



## NS 35/15 ZN UNPERF 2000MM - DIN rail, unperforated

1206586

<https://www.phoenixcontact.com/us/products/1206586>



DIN rail, unperforated, similar to EN 60715, material: Steel, galvanized, Standard profile, color: silver, Pack of 25 (50 m)

---

## NS 35/15 CU UNPERF 2000MM-VPE 10 - DIN rail, unperforated

1201895

<https://www.phoenixcontact.com/us/products/1201895>



DIN rail, unperforated, similar to EN 60715, material: Copper, uncoated, Standard profile, color: copper-colored, Pack of 10 (20 m)

# UKKB 10 - Double-level terminal block

2772077

<https://www.phoenixcontact.com/us/products/2772077>



## NS 35/15 CAP - End cap

1206573

<https://www.phoenixcontact.com/us/products/1206573>

DIN rail end piece, for DIN rail NS 35/15



---

## NS 35/15-2,3 UNPERF 2000MM-VPE 10 - DIN rail, unperforated

1201798

<https://www.phoenixcontact.com/us/products/1201798>



DIN rail, unperforated, acc. to EN 60715, material: Steel, galvanized, passivated with a thick layer, Standard profile 2.3 mm, color: silver, Pack of 10 (20 m)

# UKKB 10 - Double-level terminal block



2772077

<https://www.phoenixcontact.com/us/products/2772077>

## ZB 10:UNBEDRUCKT - Zack marker strip

1053001

<https://www.phoenixcontact.com/us/products/1053001>



Zack marker strip, Strip, white, unlabeled, can be labeled with: PLOTMARK, CMS-P1-PLOTTER, mounting type: snapped, for terminal block width: 10.2 mm, lettering field size: 10.5 x 10.15 mm, Number of individual labels: 10

---

## ZB 10 CUS - Zack marker strip

0824941

<https://www.phoenixcontact.com/us/products/0824941>



Zack marker strip, can be ordered: Strip, white, labeled according to customer specifications, mounting type: snap into tall marker groove, for terminal block width: 10.2 mm, lettering field size: 10,15 x 10,5 mm, Number of individual labels: 10

# UKKB 10 - Double-level terminal block



2772077

<https://www.phoenixcontact.com/us/products/2772077>

## ZB10,LGS:FORTL.ZAHLEN - Zack marker strip

1053014

<https://www.phoenixcontact.com/us/products/1053014>



Zack marker strip, Strip, white, labeled, can be labeled with: CMS-P1-PLOTTER, printed horizontally: consecutive numbers 1 ... 10, 11 ... 20, etc. up to 91 ... 100, mounting type: snapped, for terminal block width: 10.2 mm, lettering field size: 10,15 x 10,5 mm, Number of individual labels: 10

---

## ZB10,QR:FORTL.ZAHLEN - Zack marker strip

1053027

<https://www.phoenixcontact.com/us/products/1053027>



Zack marker strip, Strip, white, labeled, can be labeled with: CMS-P1-PLOTTER, Printed vertically: consecutive numbers 1 ... 10, 11 ... 20, etc. up to 91 ... 100, mounting type: snapped, for terminal block width: 10.2 mm, lettering field size: 10,15 x 10,5 mm, Number of individual labels: 10

# UKKB 10 - Double-level terminal block



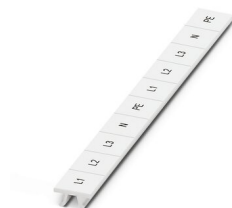
2772077

<https://www.phoenixcontact.com/us/products/2772077>

## ZB10,LGS:L1-N,PE - Marker for terminal blocks

1053412

<https://www.phoenixcontact.com/us/products/1053412>



Marker for terminal blocks, Strip, white, labeled, can be labeled with: CMS-P1-PLOTTER, horizontal: L1, L2, L3, N, PE, L1, L2, L3, N, PE, mounting type: snapped, for terminal block width: 10.2 mm, lettering field size: 10,15 x 10,5 mm, Number of individual labels: 10

---

## ZB10,LGS:U-N - Marker for terminal blocks

1053438

<https://www.phoenixcontact.com/us/products/1053438>



Marker for terminal blocks, Strip, white, labeled, can be labeled with: CMS-P1-PLOTTER, horizontal: U, V, W, N, GND, U, V, W, N, GND, mounting type: snapped, for terminal block width: 10.2 mm, lettering field size: 10,15 x 10,5 mm, Number of individual labels: 10

# UKKB 10 - Double-level terminal block



2772077

<https://www.phoenixcontact.com/us/products/2772077>

## UC-TM 10 - Marker for terminal blocks

0818069

<https://www.phoenixcontact.com/us/products/0818069>



Marker for terminal blocks, Sheet, white, unlabeled, can be labeled with: BLUEMARK ID COLOR, BLUEMARK ID, BLUEMARK CLED, PLOTMARK, CMS-P1-PLOTTER, mounting type: snapped, for terminal block width: 10.2 mm, lettering field size: 9.6 x 10.5 mm, Number of individual labels: 48

---

## UC-TM 10 CUS - Marker for terminal blocks

0824605

<https://www.phoenixcontact.com/us/products/0824605>



Marker for terminal blocks, can be ordered: by sheet, white, labeled according to customer specifications, mounting type: snap into tall marker groove, for terminal block width: 10.2 mm, lettering field size: 9.6 x 10.5 mm, Number of individual labels: 48

# UKKB 10 - Double-level terminal block



2772077

<https://www.phoenixcontact.com/us/products/2772077>

## UCT-TM 10 - Marker for terminal blocks

0829142

<https://www.phoenixcontact.com/us/products/0829142>



Marker for terminal blocks, Sheet, white, unlabeled, can be labeled with: TOPMARK NEO, TOPMARK LASER, BLUEMARK ID COLOR, BLUEMARK ID, BLUEMARK CLED, THERMOMARK PRIME, THERMOMARK CARD 2.0, THERMOMARK CARD, mounting type: snapped, for terminal block width: 10.2 mm, lettering field size: 8.9 x 9.6 mm, Number of individual labels: 36

---

## UCT-TM 10 CUS - Marker for terminal blocks

0829623

<https://www.phoenixcontact.com/us/products/0829623>



Marker for terminal blocks, can be ordered: by sheet, white, labeled according to customer specifications, mounting type: snap into tall marker groove, for terminal block width: 10.2 mm, lettering field size: 8.9 x 9.6 mm, Number of individual labels: 36



# UKKB 10 - Double-level terminal block



2772077

<https://www.phoenixcontact.com/us/products/2772077>

## CLIPFIX 35 - End clamp

3022218

<https://www.phoenixcontact.com/us/products/3022218>

Quick mounting end clamp for NS 35/7,5 DIN rail or NS 35/15 DIN rail, with marking option, width: 9.5 mm, color: gray



---

## CLIPFIX 35-5 - End clamp

3022276

<https://www.phoenixcontact.com/us/products/3022276>

Quick mounting end clamp for NS 35/7,5 DIN rail or NS 35/15 DIN rail, with marking option, with parking option for FBS...5, FBS...6, KSS 5, KSS 6, width: 5.15 mm, color: gray



# UKKB 10 - Double-level terminal block

2772077

<https://www.phoenixcontact.com/us/products/2772077>

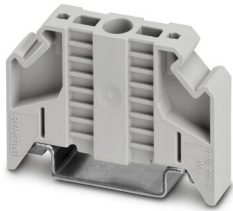


## E/NS 35 N - End clamp

0800886

<https://www.phoenixcontact.com/us/products/0800886>

End clamp, width: 9.5 mm, color: gray



---

## PSBJ 4/15/6 FARBLOS - Female test connector

0303419

<https://www.phoenixcontact.com/us/products/0303419>

Female test connector, number of positions: 1, color: transparent



# UKKB 10 - Double-level terminal block

2772077

<https://www.phoenixcontact.com/us/products/2772077>



## PSBJ 4/15/6 WH - Female test connector

0303312

<https://www.phoenixcontact.com/us/products/0303312>



Female test connector, number of positions: 1, color: white

---

## PSBJ 4/15/6 RD - Female test connector

0303325

<https://www.phoenixcontact.com/us/products/0303325>



Female test connector, number of positions: 1, color: red

# UKKB 10 - Double-level terminal block

2772077

<https://www.phoenixcontact.com/us/products/2772077>



## PSBJ 4/15/6 BU - Female test connector

0303354

<https://www.phoenixcontact.com/us/products/0303354>



Female test connector, number of positions: 1, color: blue

---

## PSBJ 4/15/6 YE - Female test connector

0303367

<https://www.phoenixcontact.com/us/products/0303367>



Female test connector, number of positions: 1, color: yellow

# UKKB 10 - Double-level terminal block

2772077

<https://www.phoenixcontact.com/us/products/2772077>



## PSBJ 4/15/6 GN - Female test connector

0303370

<https://www.phoenixcontact.com/us/products/0303370>



Female test connector, number of positions: 1, color: green

---

## PSBJ 4/15/6 VT - Female test connector

0303383

<https://www.phoenixcontact.com/us/products/0303383>



Female test connector, number of positions: 1, color: violet

# UKKB 10 - Double-level terminal block

2772077

<https://www.phoenixcontact.com/us/products/2772077>



## PSBJ 4/15/6 GY - Female test connector

0303396

<https://www.phoenixcontact.com/us/products/0303396>



Female test connector, number of positions: 1, color: gray

---

## PSBJ 4/15/6 BK - Female test connector

0303406

<https://www.phoenixcontact.com/us/products/0303406>



Female test connector, number of positions: 1, color: black

## UKKB 10 - Double-level terminal block

2772077

<https://www.phoenixcontact.com/us/products/2772077>



## PSB 4/7/6 - Female test connector

0303299

<https://www.phoenixcontact.com/us/products/0303299>

Female test connector, number of positions: 1, color: silver



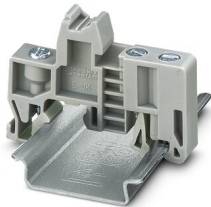
---

## E/UK - End clamp

1201442

<https://www.phoenixcontact.com/us/products/1201442>

End clamp, material: PA, color: gray, Mounting on a DIN rail NS 32 or NS 35



# UKKB 10 - Double-level terminal block



2772077

<https://www.phoenixcontact.com/us/products/2772077>

## E/UK 1 - End clamp

1201413

<https://www.phoenixcontact.com/us/products/1201413>



End clamps, for supporting the ends of double-level and three-level terminal blocks, width: 10 mm, color: gray

---

Phoenix Contact 2023 © - all rights reserved

<https://www.phoenixcontact.com>

Phoenix Contact USA  
586 Fulling Mill Road  
Middletown, PA 17057, United States  
(+717) 944-1300  
[info@phoenixcon.com](mailto:info@phoenixcon.com)