

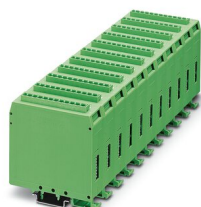
UEGM-OE/AV-24DC/24DC/100 - Timer module



2766850

<https://www.phoenixcontact.com/us/products/2766850>

Please be informed that the data shown in this PDF document is generated from our online catalog. Please find the complete data in the user documentation. Our general terms of use for downloads are valid.



Pulse expansion module, input: 24 V DC, output: 3 - 48 V DC/100 mA, supply: 20 - 30 V DC

Your advantages

- Electrical isolation of signals using solid-state relays
- Delay times of 10 to 1500 ms

Commercial data

Item number	2766850
Packing unit	1 pc
Minimum order quantity	1 pc
Note	Made to order (non-returnable)
Sales key	C460
Product key	CK61C4
Catalog page	Page 154 (IF-2011)
GTIN	4017918066888
Weight per piece (including packing)	113.1 g
Weight per piece (excluding packing)	102.5 g
Customs tariff number	85364190
Country of origin	DE

Technical data

Notes

General	COMBICON connection plugs can be ordered separately.
---------	--

Product properties

Product type	Solid-state relay module
--------------	--------------------------

Insulation characteristics

Insulation	Basic insulation
------------	------------------

Insulation characteristics

Insulation	Basic insulation
Overvoltage category	III
Pollution degree	2

Electrical properties

Test voltage (Input/output)	1 kV AC (Input/output)
-----------------------------	------------------------

Input data

Pulse input

Impulse voltage	24 V DC ($\pm 20\%$)
Pulse time	0.1 ms
Max. current consumption	6 mA
Protective circuit	RC element; RC element

Output data

Design of digital output	electronic
Output voltage range	3 V DC ... 48 V DC (V_{CC} , GND)
Limiting continuous current	100 mA
Voltage drop at max. limiting continuous current	1.4 V
Output circuit	3-conductor, ground-referenced
Protective circuit	Reverse polarity protection; Polarity protection diode
	Surge protection; Freewheeling diode

Connection data

Input side

Connection method	Screw connection
Conductor cross section rigid	0.2 mm ² ... 4 mm ²
Conductor cross section flexible	0.2 mm ² ... 2.5 mm ²
Conductor cross section AWG	24 ... 12

Output side

Connection method	Screw connection
-------------------	------------------

UEGM-OE/AV-24DC/24DC/100 - Timer module

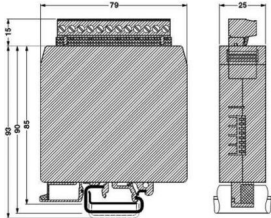


2766850

<https://www.phoenixcontact.com/us/products/2766850>

Conductor cross section rigid	0.2 mm ² ... 4 mm ²
Conductor cross section flexible	0.2 mm ² ... 2.5 mm ²
Conductor cross section AWG	24 ... 12

Dimensions

Dimensional drawing	
Width	25 mm
Height	79 mm
Depth	85 mm

Environmental and real-life conditions

Ambient conditions

Ambient temperature (operation)	0 °C ... 55 °C
---------------------------------	----------------

Standards and regulations

Standards/regulations	IEC 60664
-----------------------	-----------

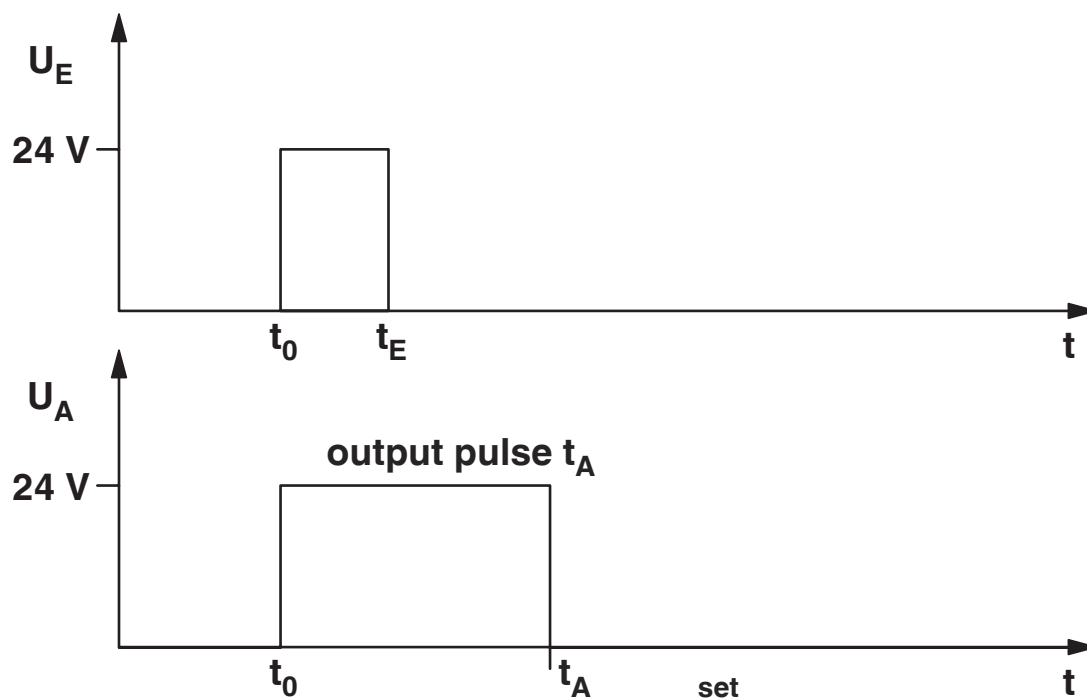
Mounting

Assembly instructions	in rows with zero spacing
Mounting position	any

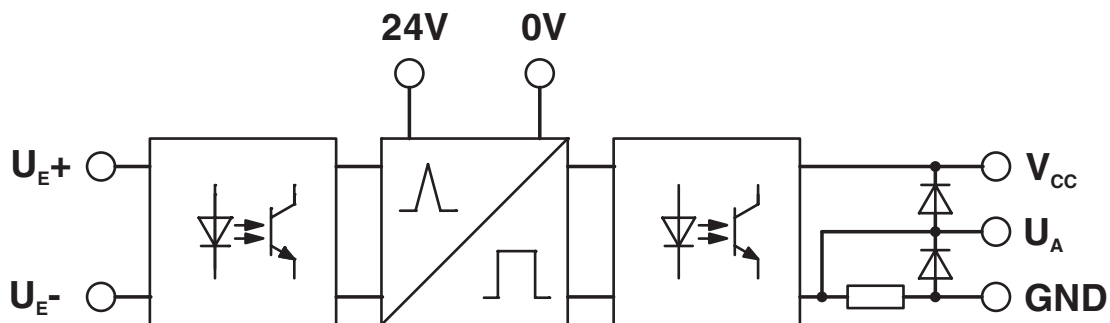
Drawings

Diagram

Operating voltage present



Circuit diagram



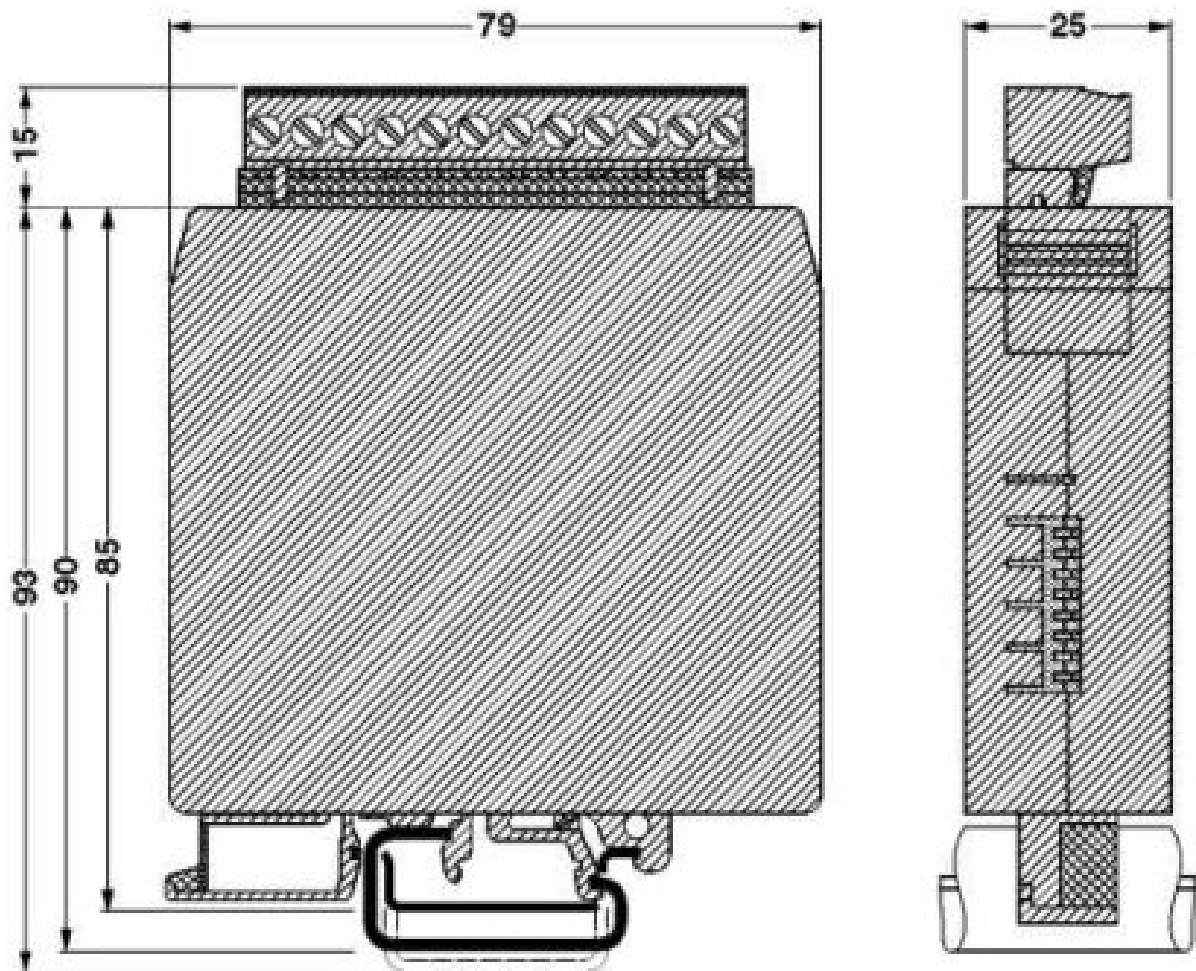
UEGM-OE/AV-24DC/24DC/100 - Timer module

2766850

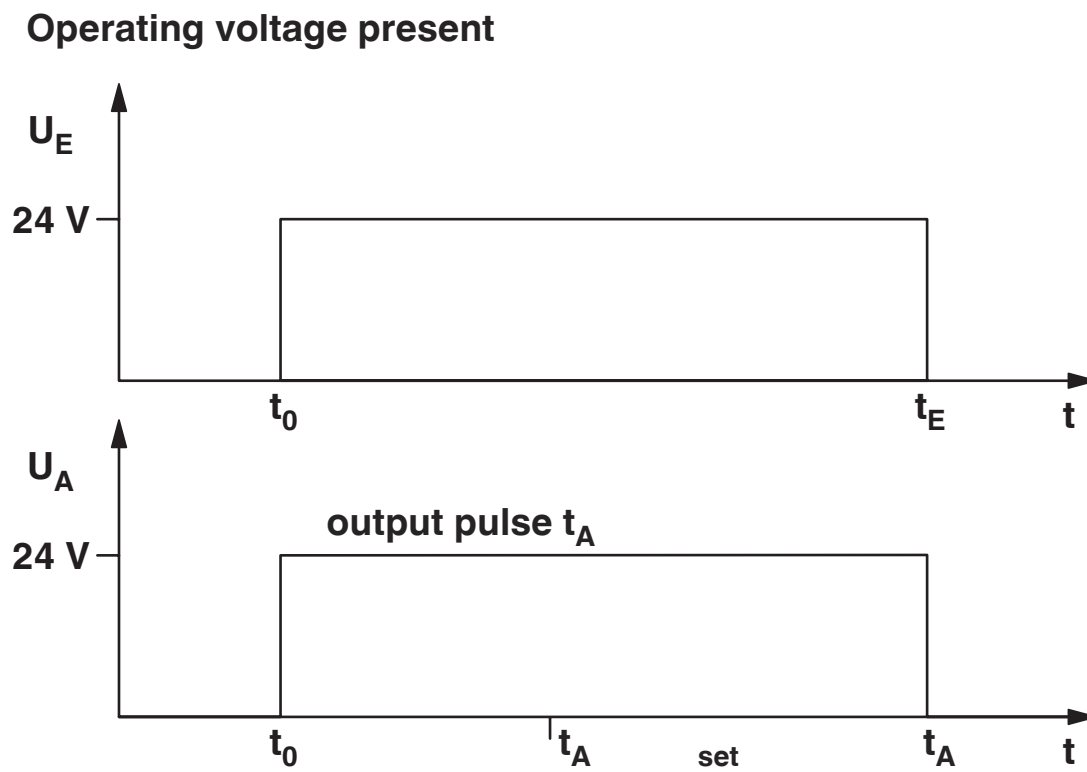
<https://www.phoenixcontact.com/us/products/2766850>



Dimensional drawing



Diagram



UEGM-OE/AV-24DC/24DC/100 - Timer module



2766850

<https://www.phoenixcontact.com/us/products/2766850>

Classifications

ECLASS

ECLASS-11.0	27371604
-------------	----------

UEGM-OE/AV-24DC/24DC/100 - Timer module



2766850

<https://www.phoenixcontact.com/us/products/2766850>

Environmental product compliance

China RoHS	Environmentally Friendly Use Period = 50 years
	For information on hazardous substances, refer to the manufacturer's declaration available under "Downloads"

2766850

<https://www.phoenixcontact.com/us/products/2766850>

Accessories

MSTBT 2,5/12-ST-5,08 - PCB connector

1781085

<https://www.phoenixcontact.com/us/products/1781085>



PCB connector, nominal cross section: 2.5 mm², color: green, nominal current: 12 A, rated voltage (III/2): 320 V, contact surface: Tin, contact connection type: Socket, number of potentials: 12, number of rows: 1, number of positions: 12, number of connections: 12, product range: MSTBT 2,5/...-ST, pitch: 5.08 mm, connection method: Screw connection with tension sleeve, screw head form: L Slotted, conductor/PCB connection direction: 0 °, locking clip: - Locking clip, plug-in system: COMBICON MSTB 2,5, locking: without, mounting: without, type of packaging: packed in cardboard

Phoenix Contact 2023 © - all rights reserved
<https://www.phoenixcontact.com>

Phoenix Contact USA
586 Fulling Mill Road
Middletown, PA 17057, United States
(+717) 944-1300
info@phoenixcon.com