

PSI-MODEM-SMS-REL/6 DI/4DO/AC - Signaling system



2313513

<https://www.phoenixcontact.com/us/products/2313513>

Please be informed that the data shown in this PDF document is generated from our online catalog. Please find the complete data in the user documentation. Our general terms of use for downloads are valid.



SMS remote control and signaling system for mounting on EN DIN rails. Installation built-in device as per DIN 43880. 6 digital inputs and 4 relay outputs. Supply voltage 240 V AC. Scope of supply: SMS relay, antenna, software, RS-232 cable.

Your advantages

- GSM mobile phone network: 850, 900, 1800, and 1900 MHz
- RS-232 configuration interface
- Switching of outputs for a predefined time
- Notification via SMS on change of status at input
- SMS status query of all inputs and outputs
- SMS relay for remote control of outputs
- Integrated phone book for up to 50 numbers
- Maximum of 5 receivers per SMS message
- Installation component model according to DIN 43880
- Password protection
- Alarm generation on voltage failure via SMS
- Easy configuration on PC without programming knowledge
- Can be used worldwide
- Configuration software and programming cable supplied as standard

Commercial data

Item number	2313513
Packing unit	1 pc
Minimum order quantity	1 pc
Note	Made to order (non-returnable)
Sales key	DN25
Product key	DNC423
Catalog page	Page 421 (C-8-2013)
GTIN	4046356466110
Weight per piece (including packing)	612.4 g
Weight per piece (excluding packing)	612.4 g
Customs tariff number	85176200
Country of origin	CH

PSI-MODEM-SMS-REL/6 DI/4DO/AC - Signaling system



2313513

<https://www.phoenixcontact.com/us/products/2313513>

Technical data

Product properties

Product type	Signaling system
--------------	------------------

Electrical properties

Maximum power dissipation for nominal condition	1.75 W
Mains type	Cellular communication

Supply

Supply voltage range	110 V AC ... 240 V AC
Typical current consumption	< 10 mA (230 V AC)

Input data

Digital

Description of the input	Digital input
Number of inputs	6
Switching level "0" signal	≤ 85 V AC
Switching level "1" signal	≥ 85 V AC

Output data

Switching

Output name	Relay output
Number of outputs	4
Contact switching type	Changeover contact
Contact material	AgNi (90/10) gold-plated
Maximum switching voltage	250 V AC/DC
Limiting continuous current	10 A (per relay) 20 A (Total current of all contacts)
Maximum inrush current	15 A (20 ms)
Mechanical service life	approx. 30x 10 ⁶ switching cycles

Connection data

Supply

Tightening torque	0.56 Nm ... 0.79 Nm
-------------------	---------------------

Interfaces

Interface	SIM interface
-----------	---------------

Wireless

Interface description	GSM
Frequency	850 MHz (2 W (EGSM)) 900 MHz (2 W (EGSM))

PSI-MODEM-SMS-REL/6 DI/4DO/AC - Signaling system

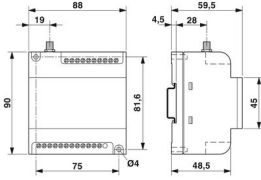


2313513

<https://www.phoenixcontact.com/us/products/2313513>

Antenna	1800 MHz (1 W (EGSM))
	1900 MHz (1 W (EGSM))
	50 Ω impedance SMA antenna socket

Dimensions

Dimensional drawing	
Width	88 mm
Height	90 mm
Depth	60 mm

Environmental and real-life conditions

Ambient conditions

Ambient temperature (operation)	-25 °C ... 55 °C
Ambient temperature (storage/transport)	-40 °C ... 85 °C

Approvals

Corrosive gas test

Identification	ISA-S71.04-1985 G3 Harsh Group A
----------------	----------------------------------

EMC data

Electromagnetic compatibility	Conformance with R&TTE directive 1999/5/EC
-------------------------------	--

PSI-MODEM-SMS-REL/6 DI/4DO/AC - Signaling system

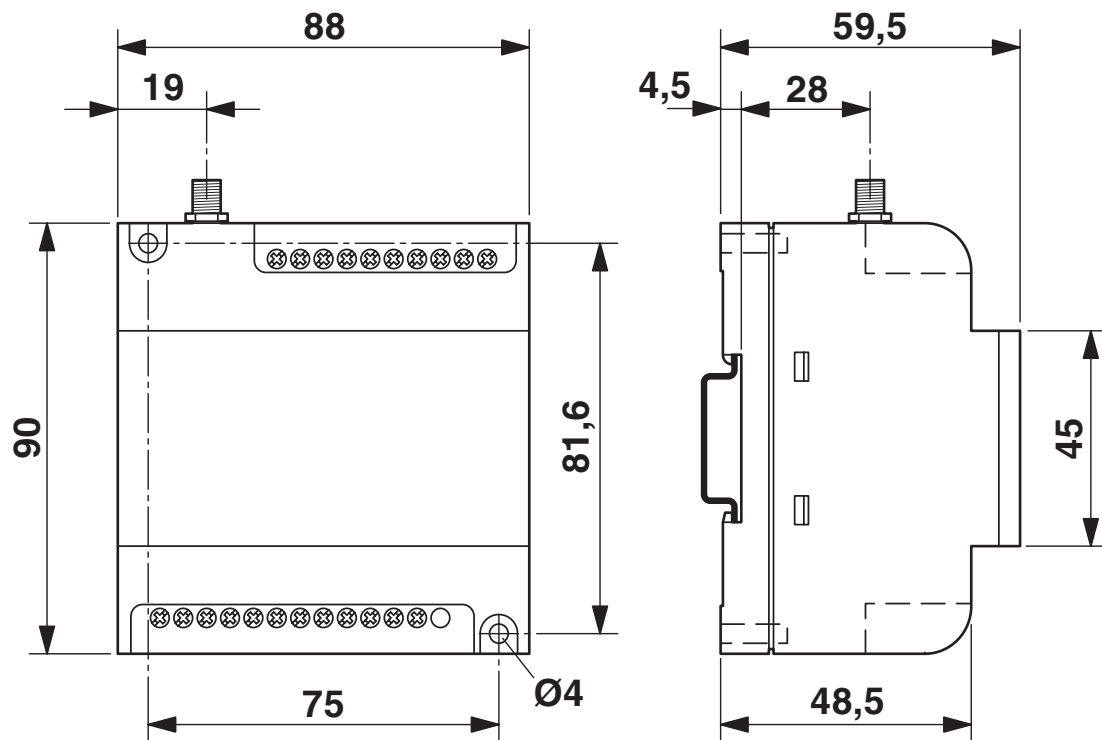


2313513

<https://www.phoenixcontact.com/us/products/2313513>

Drawings

Dimensional drawing

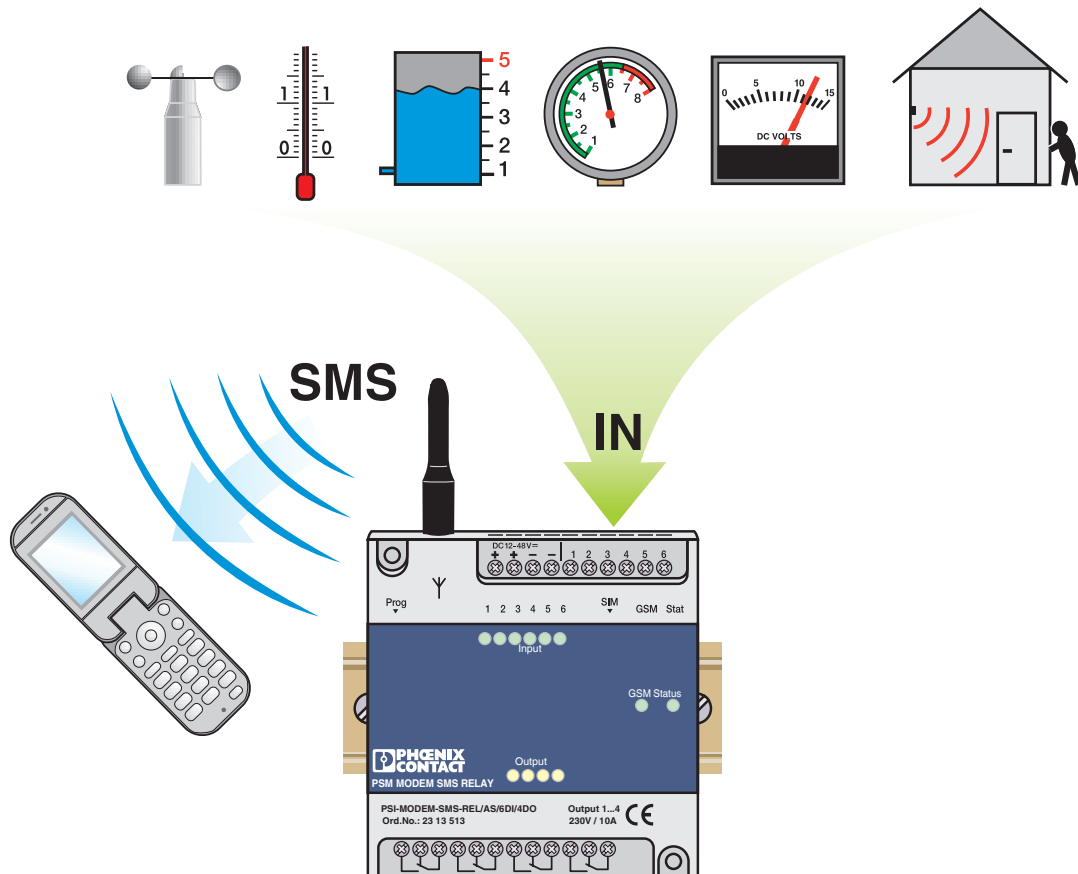


PSI-MODEM-SMS-REL/6 DI/4DO/AC - Signaling system

2313513

<https://www.phoenixcontact.com/us/products/2313513>

Application drawing

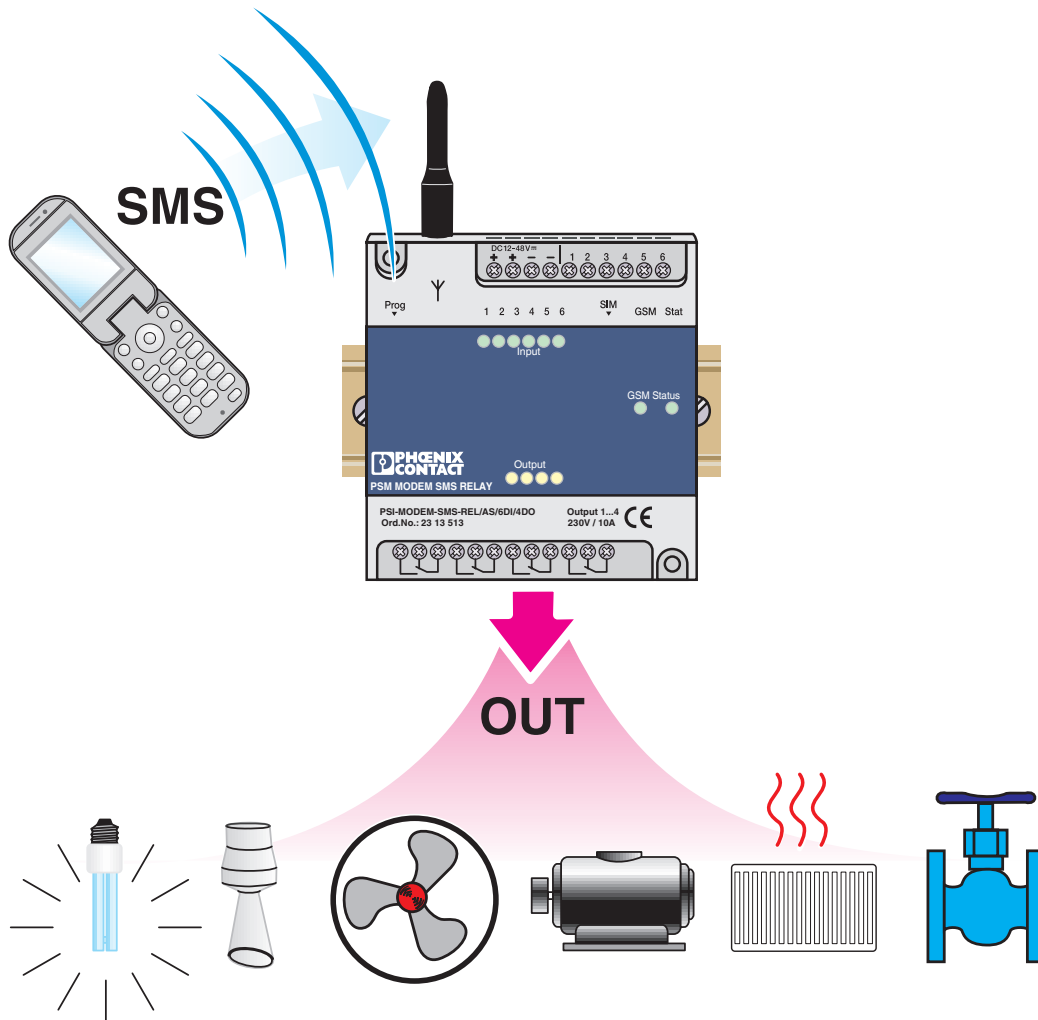


PSI-MODEM-SMS-REL/6 DI/4DO/AC - Signaling system

2313513

<https://www.phoenixcontact.com/us/products/2313513>

Application drawing



PSI-MODEM-SMS-REL/6 DI/4DO/AC - Signaling system



2313513
<https://www.phoenixcontact.com/us/products/2313513>

Environmental product compliance

China RoHS	Environmentally friendly use period: unlimited = EFUP-e
	No hazardous substances above threshold values

PSI-MODEM-SMS-REL/6 DI/4DO/AC - Signaling system



2313513

<https://www.phoenixcontact.com/us/products/2313513>

Accessories

TC MOBILE I/O X200 - SMS relay

2903805

<https://www.phoenixcontact.com/us/products/2903805>



SMS relay and signaling module, monitor analog and digital values via cellular network and switch relay outputs remotely, communication via SMS and GPRS (e-mail transmission, app), supply voltage range 10 V ... 60 V AC

TC MOBILE I/O X200 AC - SMS relay

2903806

<https://www.phoenixcontact.com/us/products/2903806>



SMS relay and signaling module, monitor digital values via cellular network and switch relay outputs remotely, communication via SMS and GPRS (e-mail transmission, app), supply voltage range 93 V ... 250 V AC.

PSI-MODEM-SMS-REL/6 DI/4DO/AC - Signaling system



2313513

<https://www.phoenixcontact.com/us/products/2313513>

TC MOBILE I/O X300 - Signaling system

2903807

<https://www.phoenixcontact.com/us/products/2903807>



Compact signaling system for cellular networks to monitor analog and digital values as well as to switch relay outputs remotely. Communication is via the ODP protocol to an ODP server using GPRS. Supply voltage range of 10 V ... 60 V DC.

TC MOBILE I/O X300 AC - Signaling system

2903808

<https://www.phoenixcontact.com/us/products/2903808>



Compact signaling system for cellular networks to monitor digital values as well as to switch relay outputs remotely. Communication is via the ODP protocol to an ODP server using GPRS. Supply voltage range of 93 V ... 250 V AC.

PSI-MODEM-SMS-REL/6 DI/4DO/AC - Signaling system



2313513

<https://www.phoenixcontact.com/us/products/2313513>

PSI-GSM/UMTS-QB-ANT - Antenna

2313371

<https://www.phoenixcontact.com/us/products/2313371>

GSM UMTS antenna, with omnidirectional characteristic, 2 m antenna cable with SMA round connector



CM-KBL-RS232/USB - Cable

2881078

<https://www.phoenixcontact.com/us/products/2881078>

Connecting cable D-9-SUB to USB, with adapter D-9-SUB to D-25-SUB.



PSI-MODEM-SMS-REL/6 DI/4DO/AC - Signaling system



2313513

<https://www.phoenixcontact.com/us/products/2313513>

PSI-CAB-GSM/UMTS- 5M - Antenna cable

2900980

<https://www.phoenixcontact.com/us/products/2900980>

Cellular antenna cable, 5 m in length, SMA (male) -> SMA (female), 50 ohm impedance



PSI-CAB-GSM/UMTS-10M - Antenna cable

2900981

<https://www.phoenixcontact.com/us/products/2900981>

Cellular antenna cable, 10 m in length, SMA (male) -> SMA (female), 50 ohm impedance



PSI-MODEM-SMS-REL/6 DI/4DO/AC - Signaling system



2313513

<https://www.phoenixcontact.com/us/products/2313513>

CSMA-LAMBDA/4-2.0-BS-SET - Surge protection device

2800491

<https://www.phoenixcontact.com/us/products/2800491>

Attachment plug with Lambda/4 technology as surge protection for coaxial signal interfaces. Connection: Male/female SMA connectors.



TC ANT MOBILE WALL 5M - Antenna

2702273

<https://www.phoenixcontact.com/us/products/2702273>

Multiband omnidirectional antenna for wall or mast mounting, 0.6 GHz ... 6 GHz, gain: 3 dBi ... 7 dBi, degree of protection: IP66, connection: SMA (male), incl. 5 m connecting cable, mounting bracket, and mast clamps



Phoenix Contact 2023 © - all rights reserved
<https://www.phoenixcontact.com>

Phoenix Contact USA
586 Fulling Mill Road
Middletown, PA 17057, United States
(+717) 944-1300
info@phoenixcon.com