

# ICS25-B100X120-V-7035 - Mounting base housing



2203884

<https://www.phoenixcontact.com/us/products/2203884>

Please be informed that the data shown in this PDF document is generated from our online catalog. Please find the complete data in the user documentation. Our general terms of use for downloads are valid.



DIN rail housing, Lower housing part with metal foot catch, Level 1: with vents, width: 25 mm, height: 100 mm, depth: 130.9 mm, color: light grey (7035), cross connection: DIN rail connector (optional), number of positions cross connector: 8

## Your advantages

- Flexible use, thanks to the modular system and unique modularity in the connection technology
- Standardized connections such as RJ45, USB, D-SUB and antenna sockets as components that can be integrated
- Optimal space utilization, as well as adaptability of design, colors, and printing
- Eight-position DIN rail connectors with parallel and up to two serial contacts for easy module-to-module communication

## Commercial data

Item number	2203884
Packing unit	1 pc
Minimum order quantity	10 pc
Sales key	AC09
Product key	ACHAEB
GTIN	4055626465593
Weight per piece (including packing)	53.64 g
Weight per piece (excluding packing)	44.7 g
Customs tariff number	85389099
Country of origin	DE

# ICS25-B100X120-V-7035 - Mounting base housing



2203884

<https://www.phoenixcontact.com/us/products/2203884>

## Technical data

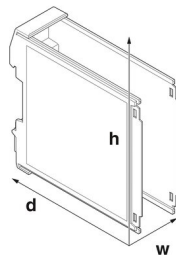
### Notes

General	Refer to the data sheet for the range in the download area.
General	Material of contact pads for bus connector, galvanic gold (hard gold)

### Product properties

Product type	Enclosure bottom part
Product family	ICS25
Max. number of positions	32 (pitch: 5 mm) 40 (pitch: 3.5 mm)
Number of rows	5
Type	Lower housing part with metal foot catch
Housing type	DIN rail housing
Ventilation openings present	yes
Housing series	ICS

### Dimensions

Dimensional drawing	
Width	25 mm
Height	100 mm
Depth	130.9 mm
Depth from top edge of DIN rail to support point on upper part	120.7 mm
Dimensions	25 mm x 100 mm x 132.6 mm (Lower housing part from the top edge of the DIN rail with upper housing part) 25 mm x 100 mm x 139.2 mm (Lower housing part with upper housing part)

### PCB design

PCB thickness	1.4 mm ... 1.8 mm
---------------	-------------------

### Material specifications

Color	light grey (7035)
Flammability rating according to UL 94	V0
CTI according to IEC 60112	600
Surface characteristics	untreated
Housing material	Polyamide

## Environmental and real-life conditions

## Power dissipation single housing for 20 °C

Ambient temperature	20 °C
Reduction factor	1
Mounting position	vertical
Power dissipation	17 W

## Power dissipation single housing for 30 °C

Ambient temperature	30 °C
Reduction factor	0.81
Mounting position	vertical
Power dissipation	13.5 W

## Power dissipation single housing for 40 °C

Ambient temperature	40 °C
Reduction factor	0.67
Mounting position	vertical
Power dissipation	11.4 W

## Power dissipation single housing for 50 °C

Ambient temperature	50 °C
Reduction factor	0.53
Mounting position	vertical
Power dissipation	9 W

## Power dissipation single housing for 60 °C

Ambient temperature	60 °C
Reduction factor	0.41
Mounting position	vertical
Power dissipation	7 W

## Power dissipation single housing for 70 °C

Ambient temperature	70 °C
Reduction factor	0.31
Mounting position	vertical
Power dissipation	5.3 W

## Vibration test

Specification	IEC 60068-2-6:2007-12
Frequency	10 - 150 - 10 Hz
Sweep speed	1 octave/min
Amplitude	0.15 mm (10 Hz ... 58.1 Hz)
Acceleration	2g (58.1 Hz ... 150 Hz)
Test duration per axis	2.5 h
Test directions	X-, Y- and Z-axis

# ICS25-B100X120-V-7035 - Mounting base housing



2203884

<https://www.phoenixcontact.com/us/products/2203884>

## Glow-wire test

Specification	IEC 60695-2-11:2014-02
Temperature	850 °C
Time of exposure	30 s

## Thermal stability / ball thrust test

Specification	IEC 60695-10-2:2014-02
Temperature	125 °C
Test duration	1 h
Force	20 N

## Mechanical strength / tumbling barrel

Specification	IEC 60068-2-31:2008-05
Height of fall	50 cm
Frequency	50

## Shocks

Specification	IEC 60068-2-27:2008-02
Pulse shape	Semi-sinusoidal
Acceleration	15g
Shock duration	11 ms
Number of shocks per direction	3
Test directions	X-, Y- and Z-axis (pos. and neg.)

## Test for substances that would hinder coating with paint or varnish

Specification	VDMA 24364:2018-05
Result	Test passed

## Degree of protection (IP code)

Specification	IEC 60529:1989-11 + AMD 1:1999-11 + AMD 2:2013-08
Result, degree of protection, IP code	IP20

## Ambient conditions

Max. IP code to attain	IP20
Ambient temperature (operation)	-40 °C ... 105 °C (depending on power dissipation)
Ambient temperature (storage/transport)	-40 °C ... 55 °C
Ambient temperature (assembly)	-5 °C ... 100 °C
Relative humidity (storage/transport)	80 %

## PCB data

Number of PCB holders	2
Type of PCB mount	Latching
Thickness of the PCB	1.4 mm ... 1.8 mm

## Mounting

Mounting type	DIN rail mounting
---------------	-------------------

# ICS25-B100X120-V-7035 - Mounting base housing



2203884

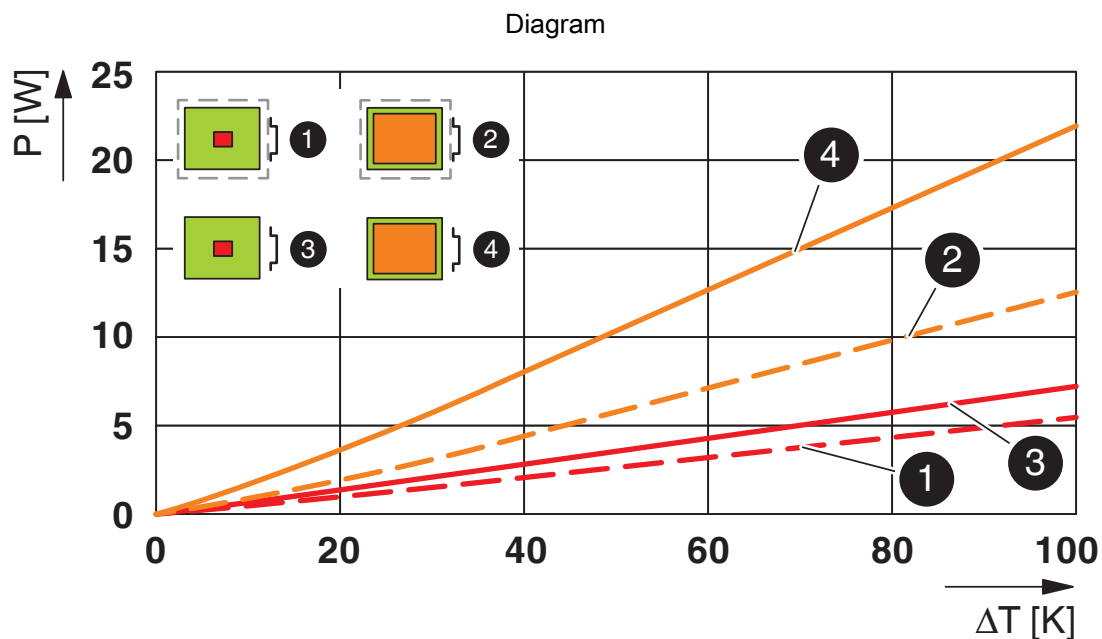
<https://www.phoenixcontact.com/us/products/2203884>

Mounting position	Vertical (horizontal DIN rail)
-------------------	--------------------------------

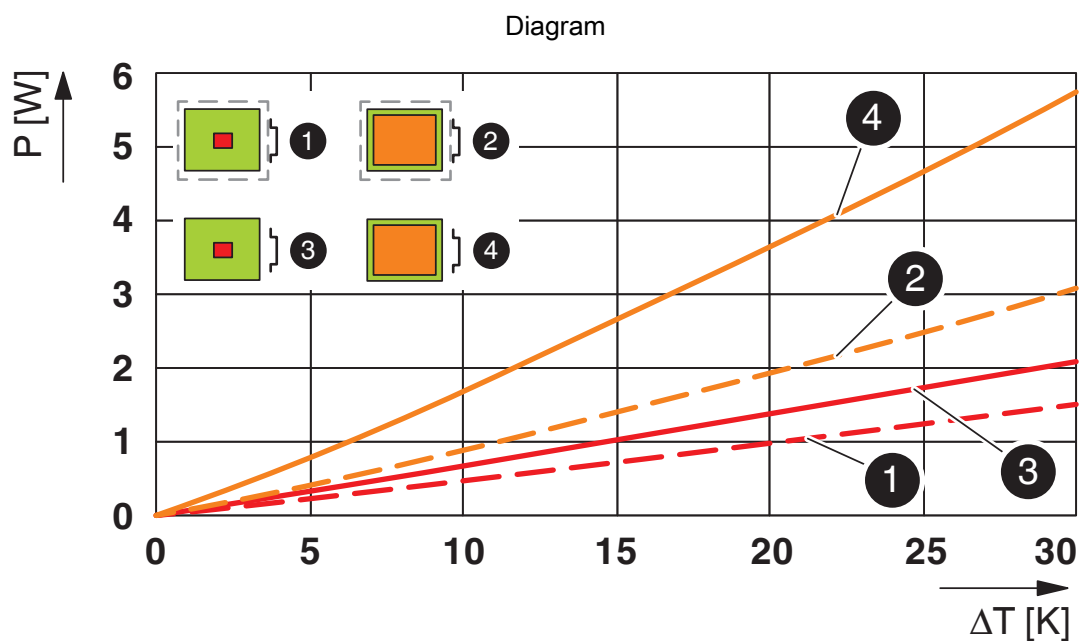
## Packaging specifications

Type of packaging	packed in cardboard
Outer packaging type	Carton

## Drawings



Power dissipation diagram for 0 K ... 100 K



Power dissipation diagram for 0 K ... 30 K

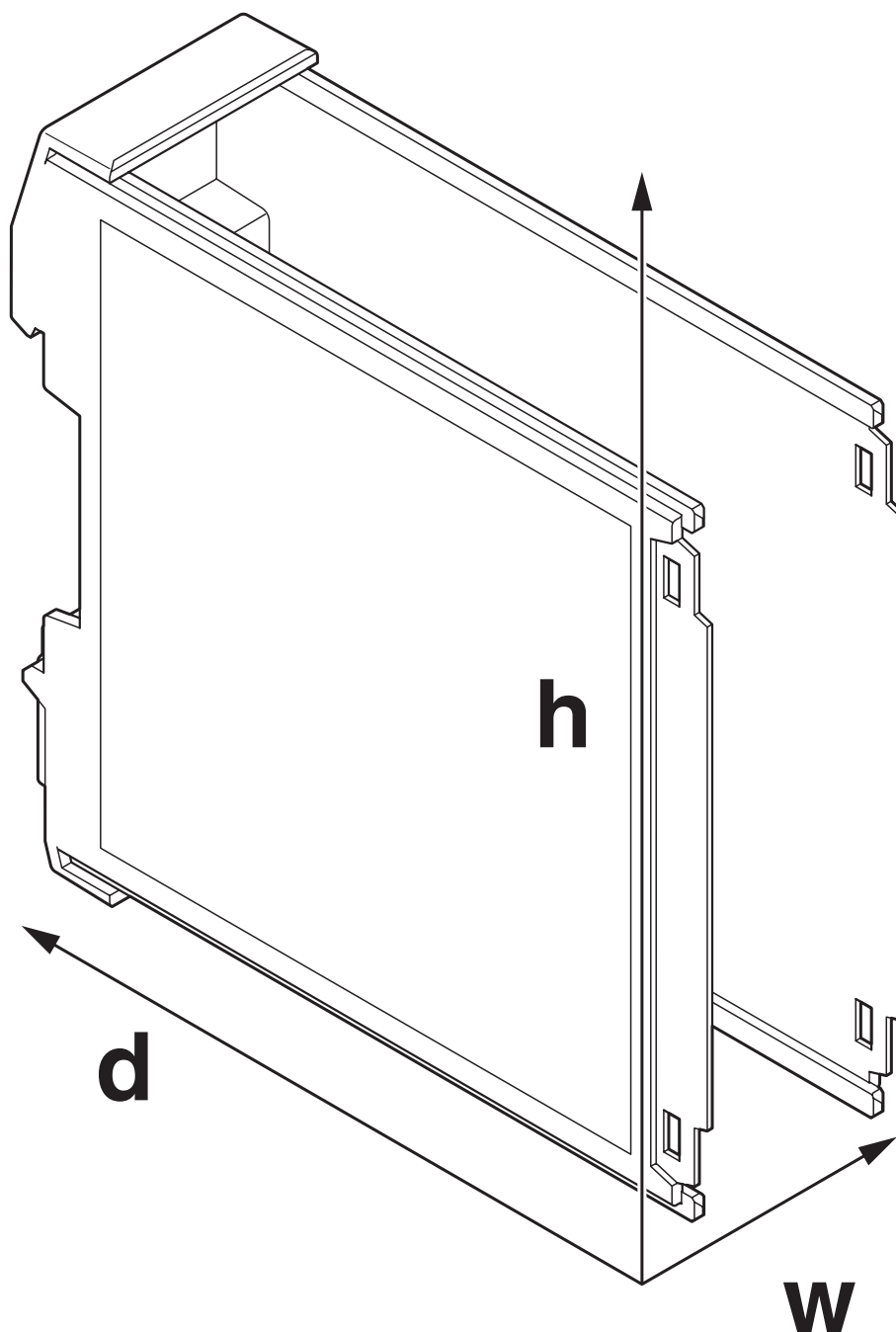
# ICS25-B100X120-V-7035 - Mounting base housing



2203884

<https://www.phoenixcontact.com/us/products/2203884>

Dimensional drawing



Schematic figure for illustrating the item dimensions. The figure is not of the desired product. For further details, refer to the product drawings in the "Downloads" tab.

# ICS25-B100X120-V-7035 - Mounting base housing



2203884

<https://www.phoenixcontact.com/us/products/2203884>

## Classifications

### ECLASS

ECLASS-11.0	27182702
ECLASS-13.0	27190601

### ETIM

ETIM 8.0	EC001031
----------	----------

### UNSPSC

UNSPSC 21.0	31261500
-------------	----------



# ICS25-B100X120-V-7035 - Mounting base housing



2203884

<https://www.phoenixcontact.com/us/products/2203884>

## Environmental product compliance

China RoHS	Environmentally friendly use period: unlimited = EFUP-e
	No hazardous substances above threshold values

# ICS25-B100X120-V-7035 - Mounting base housing



2203884

<https://www.phoenixcontact.com/us/products/2203884>

## Mandatory accessories

### ICS25-C100X12-7035 - Upper part of housing

2203882

<https://www.phoenixcontact.com/us/products/2203882>

DIN rail housing, Upper part, closed, width: 25 mm, height: 100 mm, depth: 14.35 mm, color: light grey (7035)



---

### ICS25-TL100X12-7035 - Upper part of housing

2203883

<https://www.phoenixcontact.com/us/products/2203883>

DIN rail housing, Upper part, with transparent hinged cover, width: 25 mm, height: 101 mm, depth: 14.35 mm, color: light grey (7035)



---

## Accessories

# ICS25-B100X120-V-7035 - Mounting base housing



2203884

<https://www.phoenixcontact.com/us/products/2203884>

## ICS-FE-CONTACT - Functional ground contact

2203904

<https://www.phoenixcontact.com/us/products/2203904>

Functional ground contact, for ICS series electronics housings



---

## ICC25-H/4L5,0-7035 - PCB header

2203902

<https://www.phoenixcontact.com/us/products/2203902>



PCB headers, nominal cross section: 2.5 mm<sup>2</sup>, color: light grey, nominal current: 16 A, rated voltage (III/2): 320 V, contact connection type: Pin, number of potentials: 4, number of rows: 1, number of positions: 4, number of connections: 4, product range: ICC...-H/..L5,0, pitch: 5 mm, mounting: Wave soldering, pin layout: Linear pinning, solder pin [P]: 3.5 mm, number of solder pins per potential: 1, Pin connector pattern alignment: Standard, locking: Snap-in locking, mounting: without, type of packaging: Box packaging, Product with pin output on left side

# ICS25-B100X120-V-7035 - Mounting base housing



2203884

<https://www.phoenixcontact.com/us/products/2203884>

## ICC25-H/4R5,0-7035 - PCB header

2203903

<https://www.phoenixcontact.com/us/products/2203903>



PCB headers, nominal cross section: 2.5 mm<sup>2</sup>, color: light grey, nominal current: 16 A, rated voltage (III/2): 320 V, contact connection type: Pin, number of potentials: 4, number of rows: 1, number of positions: 4, number of connections: 4, product range: ICC...-H/..R5,0, pitch: 5 mm, mounting: Wave soldering, pin layout: Linear pinning, solder pin [P]: 3.5 mm, number of solder pins per potential: 1, Pin connector pattern alignment: Standard, locking: Snap-in locking, mounting: without, type of packaging: Box packaging, Product with pin output on right side

---

## ICC25-H/5L3,5-7035 - PCB header

1084018

<https://www.phoenixcontact.com/us/products/1084018>



PCB headers, color: light grey, nominal current: 8 A, rated voltage (III/2): 150 V, contact surface: Tin, contact connection type: Pin, number of potentials: 5, number of rows: 1, number of positions: 5, number of connections: 5, product range: ICC...-H/..L3,5, pitch: 3.5 mm, mounting: Wave soldering, pin layout: Linear pinning, solder pin [P]: 2.8 mm, number of solder pins per potential: 1, Pin connector pattern alignment: Standard, locking: Snap-in locking, mounting: without, type of packaging: Box packaging, Product with pin output on left side

# ICS25-B100X120-V-7035 - Mounting base housing



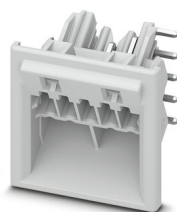
2203884

<https://www.phoenixcontact.com/us/products/2203884>

## ICC25-H/5R3,5-7035 - PCB header

1084017

<https://www.phoenixcontact.com/us/products/1084017>



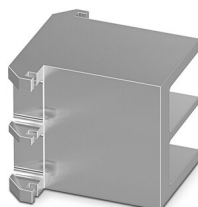
PCB headers, color: light grey, nominal current: 8 A, rated voltage (III/2): 150 V, contact surface: Tin, contact connection type: Pin, number of potentials: 5, number of rows: 1, number of positions: 5, number of connections: 5, product range: ICC...-H/...R3,5, pitch: 3.5 mm, mounting: Wave soldering, pin layout: Linear pinning, solder pin [P]: 2.8 mm, number of solder pins per potential: 1, Pin connector pattern alignment: Standard, locking: Snap-in locking, mounting: without, type of packaging: Box packaging, Product with pin output on right side

---

## ICE25-F22H-A1 - Heatsink

1328704

<https://www.phoenixcontact.com/us/products/1328704>



Heatsink for housing series: ICS, type: Heatsink fillers, material: Aluminum, anodized, product range: ICS25, width: 22.4 mm, height: 25 mm, Individual milling possible.

# ICS25-B100X120-V-7035 - Mounting base housing



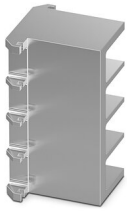
2203884

<https://www.phoenixcontact.com/us/products/2203884>

## ICE25-F45H-A1 - Heatsink

1328703

<https://www.phoenixcontact.com/us/products/1328703>



Heatsink for housing series: ICS, type: Heatsink fillers, material: Aluminum, anodized, product range: ICS25, width: 44.9 mm, height: 25 mm, Individual milling possible.

---

## ICE25-R100X22-A1 - Heatsink

1328715

<https://www.phoenixcontact.com/us/products/1328715>



Heatsink for housing series: ICS, material: Aluminum, anodized, product range: ICS25, width: 22.4 mm, height: 25 mm, Individual milling possible.

# ICS25-B100X120-V-7035 - Mounting base housing



2203884

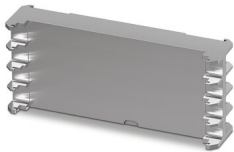
<https://www.phoenixcontact.com/us/products/2203884>

## ICE25-R100X45-A1 - Heatsink

1328714

<https://www.phoenixcontact.com/us/products/1328714>

Heatsink for housing series: ICS, material: Aluminum, anodized, product range: ICS25, width: 44.9 mm, height: 25 mm, Individual milling possible.



---

## ICS25-F22A6-7035 - Connection plate

1287369

<https://www.phoenixcontact.com/us/products/1287369>

DIN rail housing, ICS filler, with antenna function cutout, width: 25 mm, height: 7.25 mm, depth: 22.4 mm, color: light grey (7035)



## ICS25-B100X120-V-7035 - Mounting base housing

2203884

<https://www.phoenixcontact.com/us/products/2203884>



## ICS25-F22A-7035 - Connection plate

2203894

<https://www.phoenixcontact.com/us/products/2203894>

DIN rail housing, ICS filler, with antenna function cutout, width: 25 mm, height: 7.25 mm, depth: 22.4 mm, color: light grey (7035)



---

## ICS25-F22J-7035 - Connection plate

2203895

<https://www.phoenixcontact.com/us/products/2203895>

DIN rail housing, ICS filler, with RJ45 function cutout, width: 25 mm, height: 7.25 mm, depth: 22.4 mm, color: light grey (7035)





# ICS25-B100X120-V-7035 - Mounting base housing



2203884

<https://www.phoenixcontact.com/us/products/2203884>

## ICS25-F22S-7035 - Connection plate

2203890

<https://www.phoenixcontact.com/us/products/2203890>

DIN rail housing, ICS filler, closed, width: 25 mm, height: 7.25 mm, depth: 22.4 mm, color: light grey (7035)



---

## ICS25-F22U-7035 - Connection plate

1053046

<https://www.phoenixcontact.com/us/products/1053046>

DIN rail housing, ICS filler, with USB function cutout, width: 25 mm, height: 7.25 mm, depth: 22.4 mm, color: light grey (7035)



## ICS25-B100X120-V-7035 - Mounting base housing

2203884

<https://www.phoenixcontact.com/us/products/2203884>



## ICS25-F22V-7035 - Connection plate

1079495

<https://www.phoenixcontact.com/us/products/1079495>

DIN rail housing, ICS filler, with vents, width: 25 mm, height: 7.25 mm, depth: 22.4 mm, color: light grey (7035)



---

## ICS25-F45D15-7035 - Connection plate

2203896

<https://www.phoenixcontact.com/us/products/2203896>

DIN rail housing, ICS filler, with D-SUB 15 function cutout, width: 25 mm, height: 7.25 mm, depth: 44.9 mm, color: light grey (7035)



# ICS25-B100X120-V-7035 - Mounting base housing



2203884

<https://www.phoenixcontact.com/us/products/2203884>

## ICS25-F45D9-7035 - Connection plate

1053054

<https://www.phoenixcontact.com/us/products/1053054>

DIN rail housing, ICS filler, with D-SUB 9 function cutout, width: 25 mm, height: 7.25 mm, depth: 44.9 mm, color: light grey (7035)



---

## ICS25-F45S-7035 - Connection plate

2203891

<https://www.phoenixcontact.com/us/products/2203891>

DIN rail housing, ICS filler, closed, width: 25 mm, height: 7.25 mm, depth: 44.9 mm, color: light grey (7035)



# ICS25-B100X120-V-7035 - Mounting base housing



2203884

<https://www.phoenixcontact.com/us/products/2203884>

## ICS25-F45V-7035 - Connection plate

1079492

<https://www.phoenixcontact.com/us/products/1079492>

DIN rail housing, ICS filler, with vents, width: 25 mm, height: 7.25 mm, depth: 44.9 mm, color: light grey (7035)



---

## ICS25-F67S-7035 - Connection plate

1287434

<https://www.phoenixcontact.com/us/products/1287434>

DIN rail housing, ICS filler, closed, width: 25 mm, height: 7.25 mm, depth: 67.3 mm, color: light grey (7035)



# ICS25-B100X120-V-7035 - Mounting base housing



2203884

<https://www.phoenixcontact.com/us/products/2203884>

## ICS25-F67V-7035 - Connection plate

1287409

<https://www.phoenixcontact.com/us/products/1287409>

DIN rail housing, ICS filler, with vents, width: 25 mm, height: 7.25 mm, depth: 67.3 mm, color: light grey (7035)



---

## ICS25-F90S-7035 - Connection plate

1287425

<https://www.phoenixcontact.com/us/products/1287425>

DIN rail housing, ICS filler, closed, width: 25 mm, height: 7.25 mm, depth: 89.8 mm, color: light grey (7035)



# ICS25-B100X120-V-7035 - Mounting base housing



2203884

<https://www.phoenixcontact.com/us/products/2203884>

## ICS25-F90V-7035 - Connection plate

1287405

<https://www.phoenixcontact.com/us/products/1287405>

DIN rail housing, ICS filler, with vents, width: 25 mm, height: 7.25 mm, depth: 89.8 mm, color: light grey (7035)



---

## KP ICS25X100 K4 C3 P5 - Membrane keypad

1215683

<https://www.phoenixcontact.com/us/products/1215683>

Membrane keypad for ICS25x100, self-adhesive, conductive silver technology, 4 keys, 2 colors, 5-position connection lug, pitch: 1.0 mm, transparent window for 0.96" TFT display



# ICS25-B100X120-V-7035 - Mounting base housing



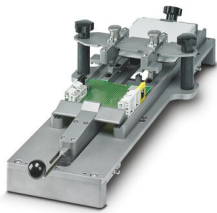
2203884

<https://www.phoenixcontact.com/us/products/2203884>

## ICS MOUNTING DEVICE - Assembly tool

1118354

<https://www.phoenixcontact.com/us/products/1118354>



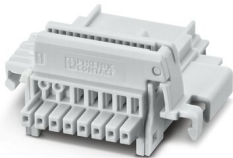
Equipment for fast, serial-production attachment of printed circuit boards in ICS 20 and ICS 25 housings

---

## TBUS8-25,0-PPPPPPPP-7035 - DIN rail bus connectors

2202891

<https://www.phoenixcontact.com/us/products/2202891>



DIN rail connector, color: light grey, nominal current: 6 A (parallel contacts), rated voltage (III/2): 32 V, number of positions: 8, pitch: 2.54 mm, mounting: DIN rail mounting, locking: without, mounting: without, type of packaging: packed in cardboard, Item with gold-plated contacts, bus connectors for connecting with electronics housings, 8 parallel contacts

# ICS25-B100X120-V-7035 - Mounting base housing



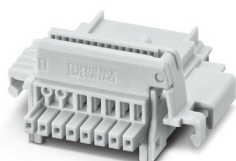
2203884

<https://www.phoenixcontact.com/us/products/2203884>

## TBUS8-25,0-PPPPPPPS-7035 - DIN rail bus connectors

2202890

<https://www.phoenixcontact.com/us/products/2202890>



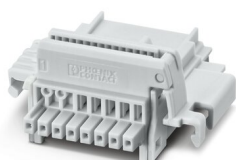
DIN rail connector, color: light grey, nominal current: 6 A, 4 A (parallel contacts) (Serial contacts), rated voltage (III/2): 32 V, number of positions: 8, pitch: 2.54 mm, mounting: DIN rail mounting, locking: without, mounting: without, type of packaging: packed in cardboard, Item with gold-plated contacts, bus connectors for connecting with electronics housings, 7 parallel contacts/1 serial contact

---

## TBUS8-25,0-PPPPPPSS-7035 - DIN rail bus connectors

2202895

<https://www.phoenixcontact.com/us/products/2202895>



DIN rail connector, color: light grey, nominal current: 6 A, 4 A (parallel contacts) (Serial contacts), rated voltage (III/2): 32 V, number of positions: 8, pitch: 2.54 mm, mounting: DIN rail mounting, locking: without, mounting: without, type of packaging: packed in cardboard, Item with gold-plated contacts, bus connectors for connecting with electronics housings, 6 parallel contacts/2 serial contacts



# ICS25-B100X120-V-7035 - Mounting base housing



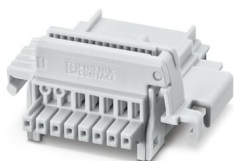
2203884

<https://www.phoenixcontact.com/us/products/2203884>

## TBUS8-25,0-PPPPSSSS-7035 - DIN rail bus connectors

1156781

<https://www.phoenixcontact.com/us/products/1156781>



DIN rail connector, color: light grey, nominal current: 6 A, 4 A (parallel contacts) (Serial contacts), rated voltage (III/2): 32 V, number of positions: 8, pitch: 2.54 mm, mounting: DIN rail mounting, locking: without, mounting: without, type of packaging: packed in cardboard, Item with gold-plated contacts, bus connectors for connecting with electronics housings, 4 parallel contacts/4 serial contacts

## ICS25-C100X12-DKP-7035 - Upper housing part with display

1215686

<https://www.phoenixcontact.com/us/products/1215686>



DIN rail housing, Upper part, integrated 0.96" display, resolution: 80 x 160 Pixel(s), interface: 4-wire SPI half duplex, width: 25 mm, height: 100 mm, depth: 14.35 mm, color: light grey (7035)

# ICS25-B100X120-V-7035 - Mounting base housing

2203884

<https://www.phoenixcontact.com/us/products/2203884>



## KP ICS25X100 K4 C3 P5 - Membrane keypad

1215683

<https://www.phoenixcontact.com/us/products/1215683>

Membrane keypad for ICS25x100, self-adhesive, conductive silver technology, 4 keys, 2 colors, 5-position connection lug, pitch: 1.0 mm, transparent window for 0.96" TFT display



---

Phoenix Contact 2023 © - all rights reserved

<https://www.phoenixcontact.com>

Phoenix Contact USA  
586 Fulling Mill Road  
Middletown, PA 17057, United States  
(+717) 944-1300  
[info@phoenixcon.com](mailto:info@phoenixcon.com)