

UM-BASIC/PRO PE CONTACT L3 - Functional ground contact



2202027

<https://www.phoenixcontact.com/us/products/2202027>

Please be informed that the data shown in this PDF document is generated from our online catalog. Please find the complete data in the user documentation. Our general terms of use for downloads are valid.



PE contact for UM-BASIC panel mounting base for connecting the PCB to the DIN rail at level 3

Your advantages

- Different base profiles, each with three PCB levels
- Module covers of different geometries can be positioned in any way
- Compatibility with many standard connection technologies
- Easy device mounting thanks to snap-mount principle (the sides are fixed without the aid of tools)
- High degree of flexibility, thanks to freely positionable covering hoods

Commercial data

Item number	2202027
Packing unit	1 pc
Minimum order quantity	20 pc
Note	Made to order (non-returnable)
Sales key	AC13
Product key	ACHDAC
GTIN	4055626005386
Weight per piece (including packing)	2.379 g
Weight per piece (excluding packing)	2.379 g
Customs tariff number	73269098
Country of origin	DE

UM-BASIC/PRO PE CONTACT L3 - Functional ground contact



2202027

<https://www.phoenixcontact.com/us/products/2202027>

Technical data

Notes

General	Refer to the data sheet for the range in the download area.
---------	---

Product properties

Product type	Ground contact
Type	bottom PCB level
Housing type	Press-drawn section housings
Housing series	UM-BASIC

Dimensions

Width	6 mm
Height	25.7 mm
Depth	20.8 mm

Material specifications

Color	silver
Housing material	Steel

Mounting

Mounting type	Screw mounting
Tightening torque / speed	Mounting the PCB: 0.5 Nm-0.6 Nm / 500 rpm-1000 rpm

UM-BASIC/PRO PE CONTACT L3 - Functional ground contact



2202027
<https://www.phoenixcontact.com/us/products/2202027>

Classifications

ECLASS

ECLASS-11.0	27182701
-------------	----------

ETIM

ETIM 8.0	EC002779
----------	----------

UNSPSC

UNSPSC 21.0	31261500
-------------	----------

UM-BASIC/PRO PE CONTACT L3 - Functional ground contact



2202027
<https://www.phoenixcontact.com/us/products/2202027>

Environmental product compliance

China RoHS	Environmentally friendly use period: unlimited = EFUP-e
	No hazardous substances above threshold values

UM-BASIC/PRO PE CONTACT L3 - Functional ground contact



2202027

<https://www.phoenixcontact.com/us/products/2202027>

Mandatory accessories

UM-BASIC PROFILE - Profile

2200149

<https://www.phoenixcontact.com/us/products/2200149>



Press-drawn section housings, Latching with side elements, latching with foot element, Basic profile, color: light grey (7035), profile length (configurable): 3 cm ... 200 cm, depth: 19.8 mm, Note: required profile length = PCB length - 16.2 mm

UM-BASIC/PRO 72 COVER-L KMGY - Lateral element

2202018

<https://www.phoenixcontact.com/us/products/2202018>



Lateral element (left) with mounting foot for DIN rails for UM-BASIC profiles with a PCB width of 72 mm

UM-BASIC/PRO PE CONTACT L3 - Functional ground contact



2202027

<https://www.phoenixcontact.com/us/products/2202027>

UM-BASIC/PRO 72 COVER-R KMGY - Lateral element

2202019

<https://www.phoenixcontact.com/us/products/2202019>

Lateral element (right) with mounting foot for DIN rails for UM-BASIC profiles with a PCB width of 72 mm



UM-BASIC/PRO 108 COVER-L KMGY - Lateral element

2202021

<https://www.phoenixcontact.com/us/products/2202021>

Lateral element (left) with mounting foot for DIN rails for UM-BASIC profiles with a PCB width of 108 mm



UM-BASIC/PRO PE CONTACT L3 - Functional ground contact



2202027

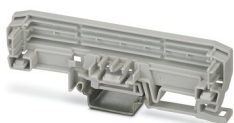
<https://www.phoenixcontact.com/us/products/2202027>

UM-BASIC/PRO 108 COVER-R KMGY - Lateral element

2202022

<https://www.phoenixcontact.com/us/products/2202022>

Lateral element (right) with mounting foot for DIN rails for UM-BASIC profiles with a PCB width of 108 mm



UM-BASIC/PRO 122 COVER-L KMGY - Lateral element

2202045

<https://www.phoenixcontact.com/us/products/2202045>

Lateral element (left) with mounting foot for DIN rails for UM-BASIC profiles with a PCB width of 122 mm



UM-BASIC/PRO PE CONTACT L3 - Functional ground contact



2202027

<https://www.phoenixcontact.com/us/products/2202027>

UM-BASIC/PRO 122 COVER-R KMGY - Lateral element

2202046

<https://www.phoenixcontact.com/us/products/2202046>

Lateral element (right) with mounting foot for DIN rails for UM-BASIC profiles with a PCB width of 122 mm



Accessories

UM-BASIC/PRO PE CONTACT L1 - Functional ground contact

2202025

<https://www.phoenixcontact.com/us/products/2202025>

PE contact for UM-BASIC panel mounting base for connecting the PCB to the DIN rail at level 1



UM-BASIC/PRO PE CONTACT L3 - Functional ground contact



2202027

<https://www.phoenixcontact.com/us/products/2202027>

UM-BASIC/PRO PE CONTACT L2 - Functional ground contact

2202026

<https://www.phoenixcontact.com/us/products/2202026>



PE contact for UM-BASIC panel mounting base for connecting the PCB to the DIN rail at level 2

UM-BASIC/PRO PCB S-LOCK KMGY - Locking

2202031

<https://www.phoenixcontact.com/us/products/2202031>



Locking element for locking the upper PCB onto UM-BASIC/PRO housings close to the edge

UM-BASIC/PRO PE CONTACT L3 - Functional ground contact



2202027

<https://www.phoenixcontact.com/us/products/2202027>

UM-BASIC/PRO PCB C-LOCK L1KMGY - Locking

2202028

<https://www.phoenixcontact.com/us/products/2202028>



Locking element for locking the PCB onto UM-BASIC/PRO housing at level 1

UM-BASIC/PRO PCB C-LOCK L2KMGY - Locking

2202029

<https://www.phoenixcontact.com/us/products/2202029>



Locking element for locking the PCB onto UM-BASIC/PRO housing at level 2

UM-BASIC/PRO PE CONTACT L3 - Functional ground contact



2202027

<https://www.phoenixcontact.com/us/products/2202027>

UM-BASIC/PRO PCB C-LOCK L3KMGY - Locking

2202030

<https://www.phoenixcontact.com/us/products/2202030>

Locking element for locking the PCB onto UM-BASIC/PRO housing at level 3



UM-BASIC/PRO MOUNT KMGY - Mounting flange

2202032

<https://www.phoenixcontact.com/us/products/2202032>

Press-drawn section housings, Wall mounting, color: light grey (7035), Mounting flange for direct wall mounting



UM-BASIC/PRO PE CONTACT L3 - Functional ground contact



2202027

<https://www.phoenixcontact.com/us/products/2202027>

UM-BASIC/PRO 72 FOOT KMGY - Foot element

2202020

<https://www.phoenixcontact.com/us/products/2202020>

Press-drawn section housings, DIN rail mounting, for the DIN rail, for mounting below UM-BASIC PROFILE (width: 72 mm), color: light grey (7035), Foot element



UM-BASIC/PRO 108 FOOT KMGY - Foot element

2202023

<https://www.phoenixcontact.com/us/products/2202023>

Press-drawn section housings, DIN rail mounting, for the DIN rail, for mounting below UM-BASIC PROFILE (width: 108 mm), color: light grey (7035), Foot element



UM-BASIC/PRO PE CONTACT L3 - Functional ground contact



2202027

<https://www.phoenixcontact.com/us/products/2202027>

UM-BASIC/PRO 122 FOOT KMGY - Foot element

2202024

<https://www.phoenixcontact.com/us/products/2202024>

Press-drawn section housings, DIN rail mounting, for the DIN rail, for mounting below UM-BASIC PROFILE (width: 122 mm), color: light grey (7035), Foot element



UM-BASIC/PRO A/U N 73 CM - Covering hood

2202035

<https://www.phoenixcontact.com/us/products/2202035>

Press-drawn section housings, Latching, Cover, color: transparent, width: 73 mm, profile length (configurable): 3 cm ... 100 cm, height: 24 mm, Note: max. length of the cover = PCB length - 19 mm



UM-BASIC/PRO PE CONTACT L3 - Functional ground contact



2202027

<https://www.phoenixcontact.com/us/products/2202027>

UM-BASIC/PRO A/U 73 CM - Covering hood

2202036

<https://www.phoenixcontact.com/us/products/2202036>



Press-drawn section housings, Latching, Cover, color: transparent, width: 73 mm, profile length (configurable): 3 cm ... 100 cm, height: 63.2 mm, Note: max. length of the cover = PCB length - 19 mm

UM-BASIC/PRO A/U 92 CM - Covering hood

2202037

<https://www.phoenixcontact.com/us/products/2202037>



Press-drawn section housings, Latching, Cover, color: transparent, width: 92 mm, profile length (configurable): 3 cm ... 100 cm, height: 34 mm, Note: max. length of the cover = PCB length - 19 mm

UM-BASIC/PRO PE CONTACT L3 - Functional ground contact



2202027

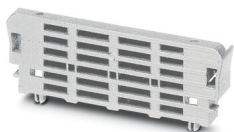
<https://www.phoenixcontact.com/us/products/2202027>

UM-BASIC/PRO LID-73N KMGY - Lateral element

2202034

<https://www.phoenixcontact.com/us/products/2202034>

Press-drawn section housings, Latching, Side element for low U-shaped profile cover, color: light grey (7035), width: 10.35 mm, height: 78.43 mm, depth: 29.75 mm



UM-BASIC/PRO LID-73 KMGY - Lateral element

2202033

<https://www.phoenixcontact.com/us/products/2202033>

Press-drawn section housings, Latching, Side element for U-shaped profile cover, color: light grey (7035), width: 10.35 mm, height: 78.49 mm, depth: 68.95 mm



UM-BASIC/PRO PE CONTACT L3 - Functional ground contact



2202027

<https://www.phoenixcontact.com/us/products/2202027>

UM-BASIC/PRO LID-92 KMGY - Lateral element

2202047

<https://www.phoenixcontact.com/us/products/2202047>

Press-drawn section housings, Latching, Side element for U-shaped profile cover, color: light grey (7035), width: 10.35 mm, height: 97.51 mm, depth: 39.7 mm



Phoenix Contact 2023 © - all rights reserved

<https://www.phoenixcontact.com>

Phoenix Contact USA
586 Fulling Mill Road
Middletown, PA 17057, United States
(+717) 944-1300
info@phoenixcon.com