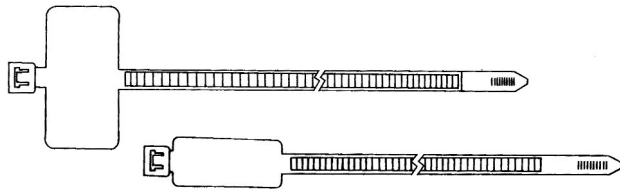
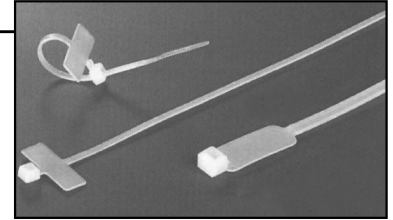


Marker Ties



Style A

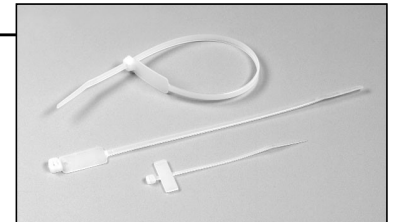
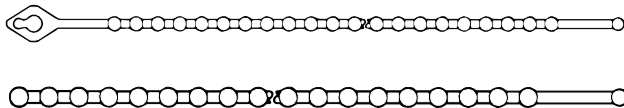
Style B



HOFFMAN PART NO.	LENGTH	STYLE	WIDTH	MAXIMUM DIAMETER (MM)	MAXIMUM DIAMETER (IN)	TENSILE STRENGTH	PACKING
MKCT4S/M	4	A	0.1	19	0.75	18	
MKCT8S/M	8	A	0.1	50	1.97	18	1000 Pack
MKCT7.8/M	7.8	B	0.19	50	1.97	50	Only
MKCT10.6/M	10.6	B	0.19	75	2.95	50	
MKCT11.8	11.8	B	0.19	80	3.15	50	100 Pack
MKCT13.3/S	13.3	B	0.19	100	3.94	50	Only

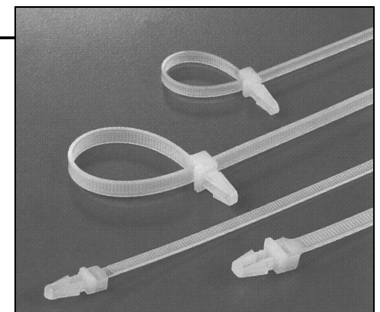
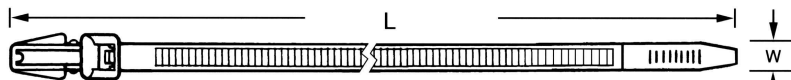
Beaded Ties

Easy to install and release, beaded ties keep wires from shifting or slipping.



HOFFMAN PART NO.	LENGTH	WIDTH	MAXIMUM DIAMETER (MM)	MAXIMUM DIAMETER (IN)	TENSILE STRENGTH	PACKING
BCT4.2S(8)	4.2	0.09	29	1.14	8	
BCT5.7S(30)	5.7	0.07	39	1.54	30	100 Pack
BCT7.1I	7.1	0.14	49	1.93	40	Only
BCT8.9I	8.9	0.14	63	2.48	40	

Push Mount Ties



HOFFMAN PART NO.	LENGTH L	WIDTH W	MAXIMUM DIAMETER (MM)	MAXIMUM DIAMETER (IN)	TENSILE STRENGTH	PACKING
PMCT6.1S(30)	6.1	0.14	32	1.26	30	1000 Pack
PMCT7.9	7.9	0.19	46	1.81	50	or 100 Pack

