

MC 1,5/ 9-G-3,5 THT - PCB header

1937567

<https://www.phoenixcontact.com/us/products/1937567>



Please be informed that the data shown in this PDF document is generated from our online catalog. Please find the complete data in the user documentation. Our general terms of use for downloads are valid.



PCB headers, color: black, contact surface: Tin, number of positions: 9, product range: MC 1,5/-G-THT, pitch: 3.5 mm, pin layout: Linear pinning, solder pin [P]: 3.4 mm, type of packaging: packed in cardboard, For user information and design recommendations for through-hole reflow technology, go to: Downloads

Commercial data

| | |
|--------------------------------------|--------------------------------|
| Item number | 1937567 |
| Packing unit | 1 pc |
| Minimum order quantity | 50 pc |
| Note | Made to order (non-returnable) |
| Sales key | AA01 |
| Product key | AAB1GJ |
| Catalog page | Page 196 (CC-2011) |
| GTIN | 4017918890230 |
| Weight per piece (including packing) | 3.694 g |
| Weight per piece (excluding packing) | 3.666 g |
| Customs tariff number | 85366990 |
| Country of origin | DE |

MC 1,5/ 9-G-3,5 THT - PCB header



1937567

<https://www.phoenixcontact.com/us/products/1937567>

Technical data

Product properties

| | |
|---------------------|--|
| Type | Component suitable for through hole reflow |
| Product type | PCB headers |
| Product family | MC 1,5/...-G-THT |
| Number of positions | 9 |
| Pitch | 3.5 mm |
| Mounting flange | without |
| Pin layout | Linear pinning |

Electrical properties

| | |
|-----------------------------|--------------------|
| Maximum load current | 8 A (per position) |
| Rated voltage (II/2) | 250 V |
| Rated voltage (III/2) | 160 V |
| Rated surge voltage (II/2) | 2.5 kV |
| Rated surge voltage (III/2) | 2.5 kV |
| Rated surge voltage (III/3) | 2.5 kV |

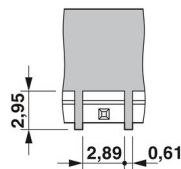
Mounting

| | |
|---------------|----------------|
| Mounting type | THR soldering |
| Pin layout | Linear pinning |

Material specifications

| | |
|--|--------|
| Color | black |
| Flammability rating according to UL 94 | V0 |
| Insulating material group | IIIa |
| Insulating material | PA-GF |
| Contact surface | Tin Sn |
| Contact surface material | Sn |

Dimensions

| | |
|--------------------------|--|
| Dimensional drawing |  |
| Width | 32.9 mm |
| Height | 10.65 mm |
| Installed height | 7.25 mm |
| Length of the solder pin | 3.4 mm |
| Length | 9.2 mm |
| Length of the solder pin | 3.4 mm |

MC 1,5/ 9-G-3,5 THT - PCB header

1937567

<https://www.phoenixcontact.com/us/products/1937567>



| | |
|---------------|--------|
| Hole diameter | 1.4 mm |
| Pitch | 3.5 mm |

Packaging specifications

| | |
|----------------------|---------------------|
| Type of packaging | packed in cardboard |
| Outer packaging type | Dry bag |

MC 1,5/ 9-G-3,5 THT - PCB header

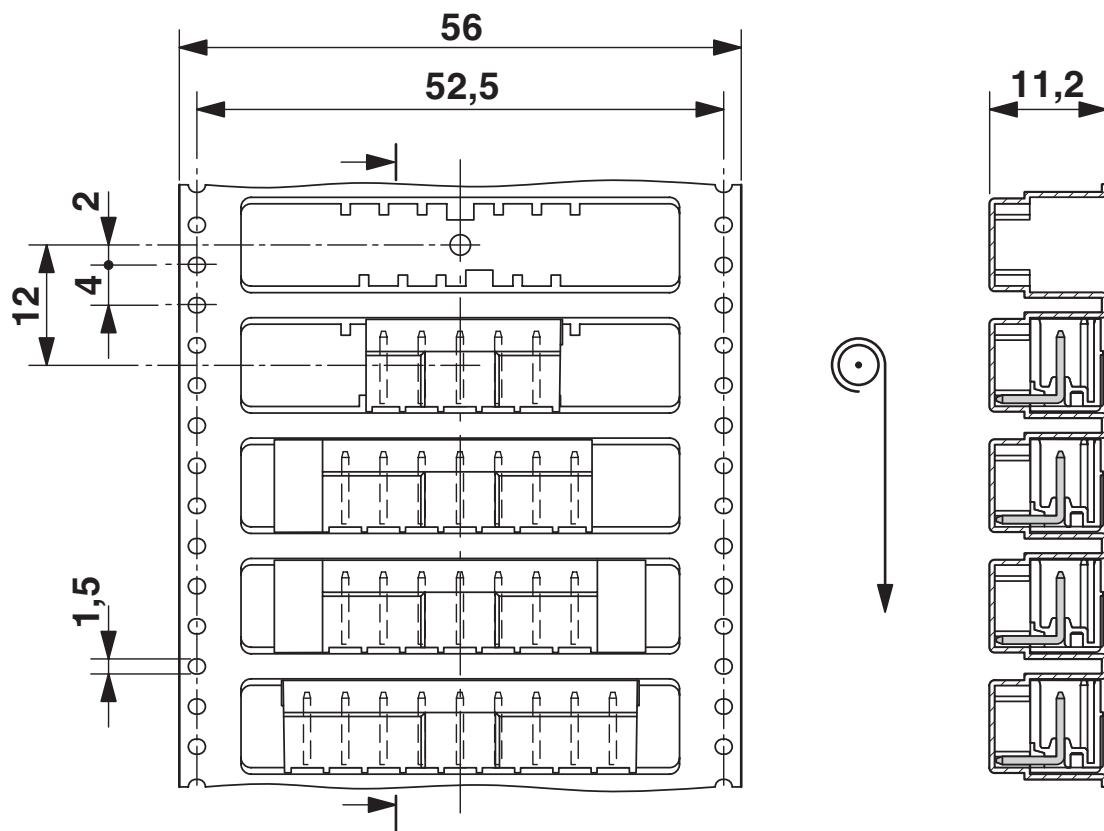
1937567

<https://www.phoenixcontact.com/us/products/1937567>



Drawings

Dimensional drawing



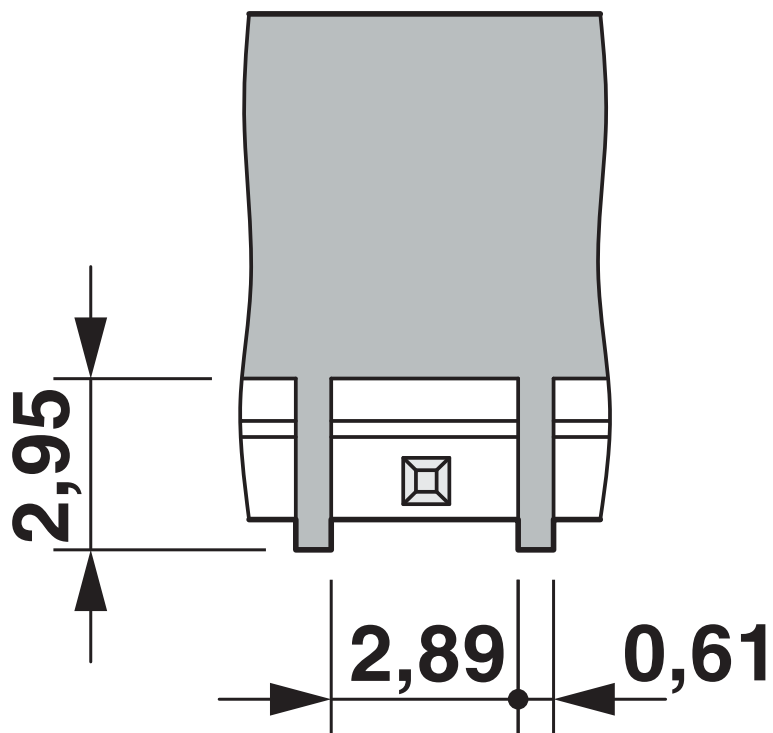
MC 1,5/ 9-G-3,5 THT - PCB header

1937567

<https://www.phoenixcontact.com/us/products/1937567>

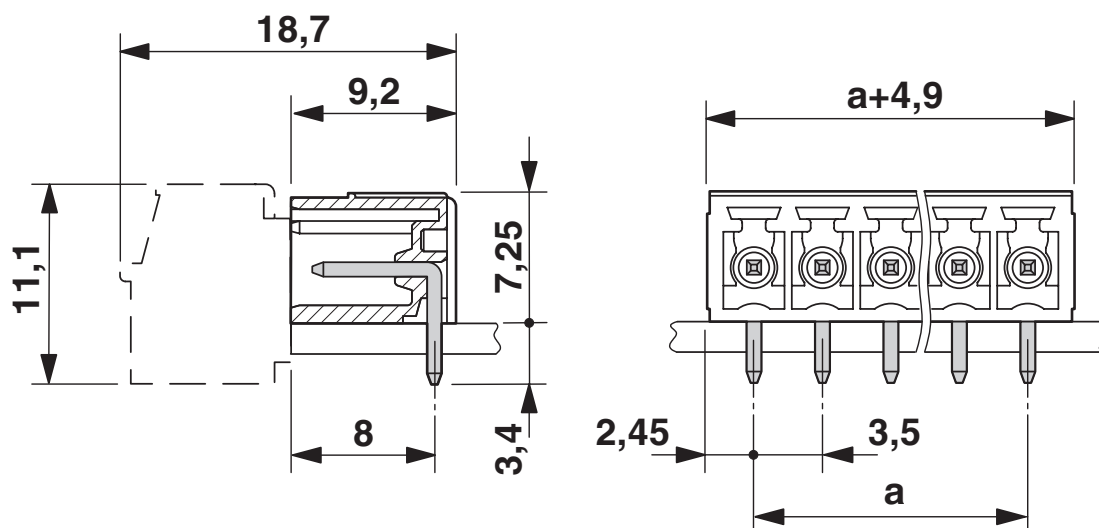


Dimensional drawing



Bottom view, free space for solder paste, 0.3 mm deep

Dimensional drawing



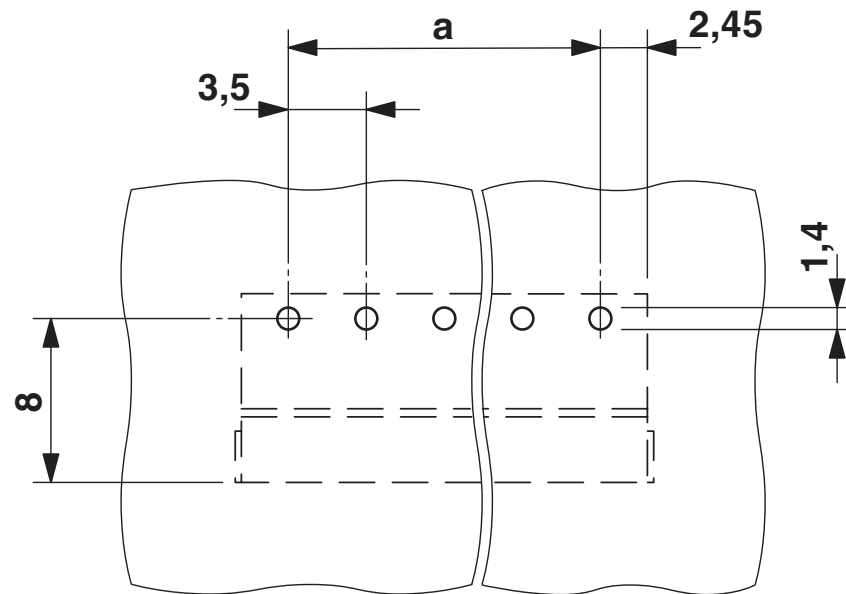
MC 1,5/ 9-G-3,5 THT - PCB header

1937567

<https://www.phoenixcontact.com/us/products/1937567>



Drilling plan/solder pad geometry



MC 1,5/ 9-G-3,5 THT - PCB header



1937567

<https://www.phoenixcontact.com/us/products/1937567>

Approvals

To download certificates, visit the product detail page: <https://www.phoenixcontact.com/us/products/1937567>



EAC

Approval ID: B.01687



cULus Recognized

Approval ID: E60425-20110128

| | Nominal voltage U_N | Nominal current I_N | Cross section AWG | Cross section mm^2 |
|-------------|-----------------------|-----------------------|-------------------|-----------------------------|
| Use group B | | | | |
| | 300 V | 8 A | - | - |
| Use group D | | | | |
| | 300 V | 8 A | - | - |



VDE Zeichengenehmigung

Approval ID: 40011723

| | Nominal voltage U_N | Nominal current I_N | Cross section AWG | Cross section mm^2 |
|--|-----------------------|-----------------------|-------------------|-----------------------------|
| | 160 V | 8 A | - | - |

MC 1,5/ 9-G-3,5 THT - PCB header



1937567

<https://www.phoenixcontact.com/us/products/1937567>

Environmental product compliance

| | |
|------------|---|
| China RoHS | Environmentally friendly use period: unlimited = EFUP-e |
| | No hazardous substances above threshold values |

MC 1,5/ 9-G-3,5 THT - PCB header

1937567

<https://www.phoenixcontact.com/us/products/1937567>

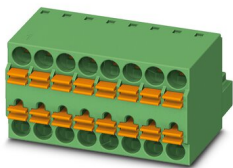


Accessories

TFMC 1,5/ 9-ST-3,5 - Printed-circuit board connector

1772689

<https://www.phoenixcontact.com/us/products/1772689>

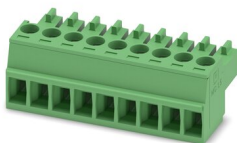


PCB connector, nominal cross section: 1.5 mm², color: green, nominal current: 8 A, rated voltage (III/2): 160 V, contact surface: Tin, contact connection type: Socket, number of potentials: 9, number of rows: 1, number of positions: 9, number of connections: 18, product range: TFMC 1,5/...-ST, pitch: 3.5 mm, connection method: Push-in spring connection, conductor/PCB connection direction: 0 °, plug-in system: COMBICON MC 1,5, locking: without, mounting: without, type of packaging: packed in cardboard

MC 1,5/ 9-ST-3,5 - PCB connector

1840434

<https://www.phoenixcontact.com/us/products/1840434>



PCB connector, nominal cross section: 1.5 mm², color: green, nominal current: 8 A, rated voltage (III/2): 160 V, contact surface: Tin, contact connection type: Socket, number of potentials: 9, number of rows: 1, number of positions: 9, number of connections: 9, product range: MC 1,5/...-ST, pitch: 3.5 mm, connection method: Screw connection with tension sleeve, screw head form: L Slotted, conductor/PCB connection direction: 0 °, plug-in system: COMBICON MC 1,5, locking: without, mounting: without, type of packaging: packed in cardboard

MC 1,5/ 9-G-3,5 THT - PCB header

1937567

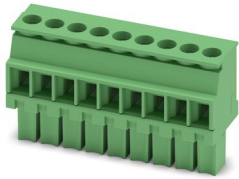
<https://www.phoenixcontact.com/us/products/1937567>



MCVW 1,5/ 9-ST-3,5 - PCB connector

1862920

<https://www.phoenixcontact.com/us/products/1862920>

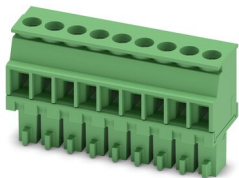


PCB connector, nominal cross section: 1.5 mm², color: green, nominal current: 8 A, rated voltage (III/2): 160 V, contact surface: Tin, contact connection type: Socket, number of potentials: 9, number of rows: 1, number of positions: 9, number of connections: 9, product range: MCVW 1,5/...-ST, pitch: 3.5 mm, connection method: Screw connection with tension sleeve, screw head form: L Slotted, conductor/PCB connection direction: -90 °, plug-in system: COMBICON MC 1,5, locking: without, mounting: without, type of packaging: packed in cardboard

MCVR 1,5/ 9-ST-3,5 - PCB connector

1863220

<https://www.phoenixcontact.com/us/products/1863220>



PCB connector, nominal cross section: 1.5 mm², color: green, nominal current: 8 A, rated voltage (III/2): 160 V, contact surface: Tin, contact connection type: Socket, number of potentials: 9, number of rows: 1, number of positions: 9, number of connections: 9, product range: MCVR 1,5/...-ST, pitch: 3.5 mm, connection method: Screw connection with tension sleeve, screw head form: L Slotted, conductor/PCB connection direction: 90 °, plug-in system: COMBICON MC 1,5, locking: without, mounting: without, type of packaging: packed in cardboard

MC 1,5/ 9-G-3,5 THT - PCB header

1937567

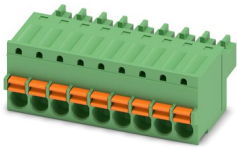
<https://www.phoenixcontact.com/us/products/1937567>



FK-MCP 1,5/ 9-ST-3,5 - PCB connector

1939976

<https://www.phoenixcontact.com/us/products/1939976>

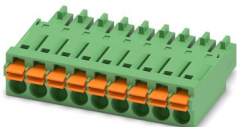


PCB connector, nominal cross section: 1.5 mm², color: green, nominal current: 8 A, rated voltage (III/2): 160 V, contact surface: Tin, contact connection type: Socket, number of potentials: 9, number of rows: 1, number of positions: 9, number of connections: 9, product range: FK-MCP 1,5/...-ST, pitch: 3.5 mm, connection method: Push-in spring connection, conductor/PCB connection direction: 0 °, plug-in system: COMBICON MC 1,5, locking: without, mounting: without, type of packaging: packed in cardboard

FMC 1,5/ 9-ST-3,5 - Printed-circuit board connector

1952335

<https://www.phoenixcontact.com/us/products/1952335>



PCB connector, nominal cross section: 1.5 mm², color: green, nominal current: 8 A, rated voltage (III/2): 160 V, contact surface: Tin, contact connection type: Socket, number of potentials: 9, number of rows: 1, number of positions: 9, number of connections: 9, product range: FMC 1,5/...-ST, pitch: 3.5 mm, connection method: Push-in spring connection, conductor/PCB connection direction: 0 °, plug-in system: COMBICON MC 1,5, locking: without, mounting: without, type of packaging: packed in cardboard

Phoenix Contact 2023 © - all rights reserved
<https://www.phoenixcontact.com>

Phoenix Contact USA
586 Fulling Mill Road
Middletown, PA 17057, United States
(+717) 944-1300
info@phoenixcon.com