

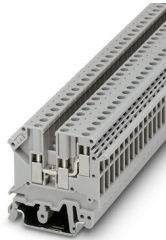
UK 5-TWIN - Feed-through terminal block



1923021

<https://www.phoenixcontact.com/us/products/1923021>

Please be informed that the data shown in this PDF document is generated from our online catalog. Please find the complete data in the user documentation. Our general terms of use for downloads are valid.



1-level terminal block with double connection on one side, cross section: 0.2 - 4 mm², AWG: 24 - 12, width: 6.2 mm, color: gray

Your advantages

- These twin modular terminal blocks are designed for the basic task of potential branching
- Universal foot for mounting on NS 35.. or NS 32... DIN rails
- Two independent conductor connections can be used on the control cabinet side
- Easy connection of different types of conductors with different cross sections
- Can be bridged in the terminal center, even with neighboring feed-through terminal blocks aligned

Commercial data

Item number	1923021
Packing unit	1 pc
Minimum order quantity	1 pc
Sales key	BE12
Product key	BE1212
Catalog page	Page 467 (C-1-2019)
GTIN	4017918052423
Weight per piece (including packing)	12.744 g
Weight per piece (excluding packing)	11.55 g
Customs tariff number	85369010
Country of origin	CN

UK 5-TWIN - Feed-through terminal block



1923021

<https://www.phoenixcontact.com/us/products/1923021>

Technical data

Product properties

Product type	Multi-conductor terminal block
Number of connections	3
Number of rows	2
Potentials	1

Insulation characteristics

Overvoltage category	III
Degree of pollution	3

Electrical properties

Rated surge voltage	6 kV
Maximum power dissipation for nominal condition	1.02 W

Connection data

Number of connections per level	3
Nominal cross section	4 mm ²

1 level

Screw thread	M3
Tightening torque	0.6 ... 0.8 Nm
Stripping length	8 mm
Internal cylindrical gage	A4
Connection in acc. with standard	IEC 60947-7-1
Conductor cross section rigid	0.2 mm ² ... 4 mm ²
Cross section AWG	24 ... 12 (converted acc. to IEC)
Conductor cross section flexible	0.2 mm ² ... 4 mm ²
Conductor cross section, flexible [AWG]	24 ... 12 (converted acc. to IEC)
Conductor cross-section flexible (ferrule without plastic sleeve)	0.25 mm ² ... 4 mm ²
Flexible conductor cross section (ferrule with plastic sleeve)	0.25 mm ² ... 2.5 mm ²
Cross-section with insertion bridge, rigid	4 mm ²
Cross-section with insertion bridge, flexible	4 mm ²
2 conductors with same cross section, solid	0.2 mm ² ... 1.5 mm ²
2 conductors with same cross section, flexible	0.2 mm ² ... 1.5 mm ²
2 conductors with same cross section, flexible, with ferrule without plastic sleeve	0.25 mm ² ... 1.5 mm ²
2 conductors with the same cross section, flexible, with TWIN ferrule with plastic sleeve	0.5 mm ² ... 1.5 mm ²
Nominal current	32 A (with 4 mm ² conductor cross section)
Maximum load current	32 A (in case of a 4 mm ² conductor cross section, the maximum load current must not be exceeded by the total current of all connected conductors.)
Nominal voltage	500 V (With tightened clamping screws)

UK 5-TWIN - Feed-through terminal block



1923021

<https://www.phoenixcontact.com/us/products/1923021>

Nominal cross section	4 mm²
-----------------------	-------

Dimensions

Width	6.2 mm
End cover width	2 mm
Height	50.5 mm
Depth	38 mm
Depth on NS 32	52 mm
Depth on NS 35/7,5	47 mm
Depth on NS 35/15	54.5 mm

Material specifications

Color	gray
Flammability rating according to UL 94	V2
Insulating material group	I
Insulating material	PA
Static insulating material application in cold	-60 °C
Temperature index of insulation material (DIN EN 60216-1 (VDE 0304-21))	130 °C
Relative insulation material temperature index (Elec., UL 746 B)	130 °C
Fire protection for rail vehicles (DIN EN 45545-2) R22	HL 1 - HL 3
Fire protection for rail vehicles (DIN EN 45545-2) R23	HL 1 - HL 3
Fire protection for rail vehicles (DIN EN 45545-2) R24	HL 1 - HL 3
Fire protection for rail vehicles (DIN EN 45545-2) R26	HL 1 - HL 3
Calorimetric heat release NFPA 130 (ASTM E 1354)	28 MJ/kg
Surface flammability NFPA 130 (ASTM E 162)	passed
Specific optical density of smoke NFPA 130 (ASTM E 662)	passed
Smoke gas toxicity NFPA 130 (SMP 800C)	passed

Electrical tests

Surge voltage test

Result	Test passed
--------	-------------

Temperature-rise test

Requirement temperature-rise test	Increase in temperature ≤ 45 K
Result	Test passed
Short-time withstand current 4000000 mm²	0.00048 kA
Result	Test passed

Power-frequency withstand voltage

Test voltage setpoint	1.89 kV
Result	Test passed

Mechanical properties

Mechanical data

UK 5-TWIN - Feed-through terminal block



1923021

<https://www.phoenixcontact.com/us/products/1923021>

Open side panel	Yes
-----------------	-----

Mechanical tests

Mechanical strength

Result	Test passed
--------	-------------

Attachment on the carrier

DIN rail/fixing support	NS 32/NS 35
Test force setpoint	1 N
Result	Test passed

Test for conductor damage and slackening

Rotation speed	10 (+/- 2) rpm
Revolutions	135
Conductor cross section/weight	0.2 mm ² / 0.2 kg
	1.5 mm ² / 0.4 kg
	4 mm ² / 0.9 kg
Result	Test passed

Environmental and real-life conditions

Needle-flame test

Time of exposure	30 s
Result	Test passed

Oscillation/broadband noise

Specification	DIN EN 50155 (VDE 0115-200):2018-05
---------------	-------------------------------------

Ambient conditions

Ambient temperature (storage/transport)	-25 °C ... 60 °C (for a short time, not exceeding 24 h, -60 °C to +70 °C)
Ambient temperature (assembly)	-5 °C ... 70 °C
Ambient temperature (actuation)	-5 °C ... 70 °C
Permissible humidity (storage/transport)	30 % ... 70 %

Standards and regulations

Connection in acc. with standard	IEC 60947-7-1
----------------------------------	---------------

Mounting

Mounting type	NS 35/7,5
	NS 35/15
	NS 32

UK 5-TWIN - Feed-through terminal block

1923021

<https://www.phoenixcontact.com/us/products/1923021>



Drawings

Circuit diagram



UK 5-TWIN - Feed-through terminal block



1923021

<https://www.phoenixcontact.com/us/products/1923021>

Approvals

To download certificates, visit the product detail page: <https://www.phoenixcontact.com/us/products/1923021>

DNV

Approval ID: TAE00001CT



CSA

Approval ID: 13631

	Nominal voltage U_N	Nominal current I_N	Cross section AWG	Cross section mm^2
	300 V	30 A	22 - 10	-



IECEE CB Scheme

Approval ID: NL-65052

	Nominal voltage U_N	Nominal current I_N	Cross section AWG	Cross section mm^2
	500 V	32 A	-	- 4



EAC

Approval ID: RU C-DE.BL08.B.00534



cULus Recognized

Approval ID: E60425

	Nominal voltage U_N	Nominal current I_N	Cross section AWG	Cross section mm^2
Use group B				
Field wiring	300 V	30 A	30 - 10	-
Factory wiring	300 V	35 A	30 - 10	-
Use group C				
Field wiring	150 V	30 A	30 - 10	-
Factory wiring	150 V	35 A	30 - 10	-



KEMA-KEUR

Approval ID: 71-119845

	Nominal voltage U_N	Nominal current I_N	Cross section AWG	Cross section mm^2
	500 V	32 A	-	0.2 - 4



NK

Approval ID: 09 ME 141



cUL Recognized

Approval ID: E192998


UK 5-TWIN - Feed-through terminal block




1923021

<https://www.phoenixcontact.com/us/products/1923021>

	Nominal voltage U_N	Nominal current I_N	Cross section AWG	Cross section mm^2
	150 V	30 A	30 - 10	-




EAC Ex
Approval ID: RU C-DE.HA91.B.00066



UL Recognized
Approval ID: E192998

	Nominal voltage U_N	Nominal current I_N	Cross section AWG	Cross section mm^2
	150 V	30 A	30 - 10	-



CCC
Approval ID: 2020322313000623

cULus Recognized

UK 5-TWIN - Feed-through terminal block



1923021

<https://www.phoenixcontact.com/us/products/1923021>

Classifications

ECLASS

ECLASS-11.0	27141120
ECLASS-13.0	27250101

ETIM

ETIM 8.0	EC000897
----------	----------

UNSPSC

UNSPSC 21.0	39121400
-------------	----------

UK 5-TWIN - Feed-through terminal block



1923021

<https://www.phoenixcontact.com/us/products/1923021>

Environmental product compliance

China RoHS	Environmentally friendly use period: unlimited = EFUP-e
	No hazardous substances above threshold values

UK 5-TWIN - Feed-through terminal block

1923021

<https://www.phoenixcontact.com/us/products/1923021>



Accessories

i Note: Applying some accessories below might limit this product.

ISSBI 10- 6 - Bridge

0301505

<https://www.phoenixcontact.com/us/products/0301505>



Bridge, pitch: 6 mm, number of positions: 10, color: silver

i Max. current carrying capacity: 24 A

LB 10-6 BU - Bridge

0202280

<https://www.phoenixcontact.com/us/products/0202280>



Bridge, pitch: 6 mm, number of positions: 10, color: blue

UK 5-TWIN - Feed-through terminal block

1923021

<https://www.phoenixcontact.com/us/products/1923021>



LB 10-6 GY - Bridge

0202358

<https://www.phoenixcontact.com/us/products/0202358>



Bridge, pitch: 6 mm, number of positions: 10, color: gray

LB 100-6 GY - Bridge

0202345

<https://www.phoenixcontact.com/us/products/0202345>



Bridge, pitch: 6 mm, number of positions: 100, color: gray

UK 5-TWIN - Feed-through terminal block

1923021

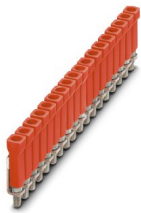
<https://www.phoenixcontact.com/us/products/1923021>



LB 100-6 RD - Bridge

0202316

<https://www.phoenixcontact.com/us/products/0202316>

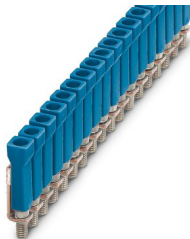


Bridge, number of positions: 100, color: red

LB 100-6 BU - Bridge

0202303

<https://www.phoenixcontact.com/us/products/0202303>



Bridge, number of positions: 100, color: blue

UK 5-TWIN - Feed-through terminal block

1923021

<https://www.phoenixcontact.com/us/products/1923021>



LB 10-6 RD - Bridge

0202293

<https://www.phoenixcontact.com/us/products/0202293>

Bridge, pitch: 6 mm, number of positions: 10, color: red



FBI 100- 6 - Fixed bridge

0201650

<https://www.phoenixcontact.com/us/products/0201650>

Fixed bridge, pitch: 6.2 mm, number of positions: 100, color: silver



UK 5-TWIN - Feed-through terminal block

1923021

<https://www.phoenixcontact.com/us/products/1923021>



FBI 10- 6 - Fixed bridge

0203250

<https://www.phoenixcontact.com/us/products/0203250>

Fixed bridge, pitch: 6.2 mm, number of positions: 10, color: silver



 Max. current carrying capacity: 32 A

FBI 20- 6 - Fixed bridge

0201867

<https://www.phoenixcontact.com/us/products/0201867>

Fixed bridge, pitch: 6.2 mm, number of positions: 20, color: silver



UK 5-TWIN - Feed-through terminal block



1923021

<https://www.phoenixcontact.com/us/products/1923021>


EB 3- 6 - Insertion bridge

0201142

<https://www.phoenixcontact.com/us/products/0201142>

Insertion bridge, pitch: 6.2 mm, number of positions: 3, color: gray



 Max. current carrying capacity: 32 A

EB 2- 6 - Insertion bridge

0201155

<https://www.phoenixcontact.com/us/products/0201155>

Insertion bridge, pitch: 6.2 mm, number of positions: 2, color: gray



 Max. current carrying capacity: 32 A

UK 5-TWIN - Feed-through terminal block

1923021

<https://www.phoenixcontact.com/us/products/1923021>



EB 10- 6 - Insertion bridge

0201139

<https://www.phoenixcontact.com/us/products/0201139>



Insertion bridge, pitch: 6.2 mm, number of positions: 10, color: gray

 Max. current carrying capacity: 32 A

USBRJ 2-7 - Switching jumper

2305538

<https://www.phoenixcontact.com/us/products/2305538>



Switching jumper, number of positions: 2, color: silver

UK 5-TWIN - Feed-through terminal block

1923021

<https://www.phoenixcontact.com/us/products/1923021>



USBR 2-7 - Switching jumper

2303239

<https://www.phoenixcontact.com/us/products/2303239>



Switching jumper, pitch: 7 mm, number of positions: 2, color: silver

D-UK 5-TWIN - End cover

1923034

<https://www.phoenixcontact.com/us/products/1923034>



End cover, length: 50 mm, width: 2 mm, height: 50 mm, color: gray

UK 5-TWIN - Feed-through terminal block

1923021

<https://www.phoenixcontact.com/us/products/1923021>



UK 5-TWIN DECKELSEGMENT - Cover segment

1923089

<https://www.phoenixcontact.com/us/products/1923089>



End cover segment, for covering multi-conductor terminal blocks when two-conductor terminal blocks are aligned, color: Gray

WS 5- 6 - Warning label

1004403

<https://www.phoenixcontact.com/us/products/1004403>

Warning plate, with 2 plastic screws, across 5 terminal blocks, pitch 6 mm



UK 5-TWIN - Feed-through terminal block

1923021

<https://www.phoenixcontact.com/us/products/1923021>

WS 4- 6 - Warning label

1004209

<https://www.phoenixcontact.com/us/products/1004209>

Warning plate, with 2 plastic screws, across 4 terminal blocks, pitch 6 mm



WS 3- 6 - Warning label

1004115

<https://www.phoenixcontact.com/us/products/1004115>

Warning plate, with 2 plastic screws, across 3 terminal blocks, pitch 6 mm



UK 5-TWIN - Feed-through terminal block

1923021

<https://www.phoenixcontact.com/us/products/1923021>



FB-150 METER - Fixed bridge

0201595

<https://www.phoenixcontact.com/us/products/0201595>



Cross connection rail, for fixed bridging of identical inputs and outputs, made of Cu, nickel-plated, 1 m long

KSS 3- 6 - Short-circuit connector

0309523

<https://www.phoenixcontact.com/us/products/0309523>



Short-circuit connector, pitch: 6 mm, number of positions: 3, color: black

UK 5-TWIN - Feed-through terminal block

1923021

<https://www.phoenixcontact.com/us/products/1923021>



KSS 6 - Short-circuit connector

0301547

<https://www.phoenixcontact.com/us/products/0301547>

Short-circuit connector, pitch: 6 mm, number of positions: 2, color: black

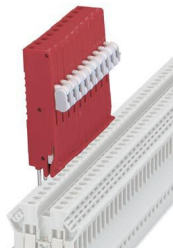


PS-UK 2,5 B/Z-6 - Test plugs

3001239

<https://www.phoenixcontact.com/us/products/3001239>

Test plugs, number of positions: 1, color: red



UK 5-TWIN - Feed-through terminal block

1923021

<https://www.phoenixcontact.com/us/products/1923021>



PS-UK 2,5 B/E - Test plugs

3001132

<https://www.phoenixcontact.com/us/products/3001132>



Test plugs, number of positions: 1, color: red

RPS - Reducing plug

0201647

<https://www.phoenixcontact.com/us/products/0201647>



Reducing plug, number of positions: 1, color: gray

UK 5-TWIN - Feed-through terminal block



1923021

<https://www.phoenixcontact.com/us/products/1923021>

TS-K - Separating plate

1302215

<https://www.phoenixcontact.com/us/products/1302215>

Separating plate, length: 22 mm, width: 0.5 mm, height: 22 mm, color: gray



SBS 6:UNBEDRUCKT - Marker card

1007222

<https://www.phoenixcontact.com/us/products/1007222>

Marker card, Card, white, unlabeled, can be labeled with: Marker pen, mounting type: snapped, snap into flat marker groove, for terminal block width: 6 mm, lettering field size: 6 x 6.1 mm, Number of individual labels: 250



UK 5-TWIN - Feed-through terminal block

1923021

<https://www.phoenixcontact.com/us/products/1923021>



IS-K 4 - Bridge bar isolator

1302338

<https://www.phoenixcontact.com/us/products/1302338>



Bridge bar isolator, color: gray

SF-SL 0,6X3,5-100 S-VDE - Screwdriver

1212587

<https://www.phoenixcontact.com/us/products/1212587>



Actuation tool, for ST terminal blocks, VDE insulated, with slimmer insulation integrated in the blade, also suitable for use as a bladed screwdriver, size: 0.6 x 3.5 x 100 mm, 2-component grip, with non-slip grip

UK 5-TWIN - Feed-through terminal block

1923021

<https://www.phoenixcontact.com/us/products/1923021>



NS 32 PERF 2000MM-VPE 10 - DIN rail perforated

1201002

<https://www.phoenixcontact.com/us/products/1201002>



DIN rail perforated, acc. to EN 60715, material: Steel, galvanized, passivated with a thick layer, G profile, color: silver, Pack of 10 (20 m)

NS 32 UNPERF 2000MM-VPE 10 - DIN rail, unperforated

1201015

<https://www.phoenixcontact.com/us/products/1201015>



DIN rail, unperforated, acc. to EN 60715, material: Steel, galvanized, passivated with a thick layer, G profile, color: silver, Pack of 10 (20 m)

UK 5-TWIN - Feed-through terminal block

1923021

<https://www.phoenixcontact.com/us/products/1923021>



NS 35/ 7,5 PERF 2000MM - DIN rail perforated

0801733

<https://www.phoenixcontact.com/us/products/0801733>



DIN rail perforated, acc. to EN 60715, material: Steel, galvanized, passivated with a thick layer, Standard profile, color: silver, Pack of 25 (50 m)

NS 35/ 7,5 UNPERF 2000MM - DIN rail, unperforated

0801681

<https://www.phoenixcontact.com/us/products/0801681>



DIN rail, unperforated, acc. to EN 60715, material: Steel, galvanized, passivated with a thick layer, Standard profile, color: silver, Pack of 25 (50 m)

UK 5-TWIN - Feed-through terminal block

1923021

<https://www.phoenixcontact.com/us/products/1923021>



NS 35/ 7,5 WH PERF 2000MM - DIN rail perforated

1204119

<https://www.phoenixcontact.com/us/products/1204119>



DIN rail perforated, acc. to EN 60715, material: Steel, Galvanized, white passivated, Standard profile, color: silver, Pack of 25 (50 m)

NS 35/ 7,5 WH UNPERF 2000MM-VPE 10 - DIN rail, unperforated

1204122

<https://www.phoenixcontact.com/us/products/1204122>



DIN rail, unperforated, acc. to EN 60715, material: Steel, Galvanized, white passivated, Standard profile, color: silver, Pack of 10 (20 m)

UK 5-TWIN - Feed-through terminal block

1923021

<https://www.phoenixcontact.com/us/products/1923021>



NS 35/ 7,5 AL UNPERF 2000MM - DIN rail, unperforated

0801704

<https://www.phoenixcontact.com/us/products/0801704>



DIN rail, unperforated, acc. to EN 60715, material: Aluminum, uncoated, Standard profile, color: silver, Pack of 25 (50 m)

NS 35/ 7,5 ZN PERF 2000MM - DIN rail perforated

1206421

<https://www.phoenixcontact.com/us/products/1206421>



DIN rail perforated, acc. to EN 60715, material: Steel, galvanized, Standard profile, color: silver, Pack of 25 (50 m)

UK 5-TWIN - Feed-through terminal block

1923021

<https://www.phoenixcontact.com/us/products/1923021>



NS 35/ 7,5 ZN UNPERF 2000MM - DIN rail, unperforated

1206434

<https://www.phoenixcontact.com/us/products/1206434>



DIN rail, unperforated, acc. to EN 60715, material: Steel, galvanized, Standard profile, color: silver, Pack of 25 (50 m)

NS 35/ 7,5 CU UNPERF 2000MM-VPE 10 - DIN rail, unperforated

0801762

<https://www.phoenixcontact.com/us/products/0801762>



DIN rail, unperforated, acc. to EN 60715, material: Copper, uncoated, Standard profile, color: copper-colored, Pack of 10 (20 m)

UK 5-TWIN - Feed-through terminal block

1923021

<https://www.phoenixcontact.com/us/products/1923021>



NS 35/ 7,5 CAP - End cap

1206560

<https://www.phoenixcontact.com/us/products/1206560>

DIN rail end piece, for DIN rail NS 35/7.5



NS 35/15 PERF 2000MM - DIN rail perforated

1201730

<https://www.phoenixcontact.com/us/products/1201730>



DIN rail perforated, similar to EN 60715, material: Steel, galvanized, passivated with a thick layer, Standard profile, color: silver, Pack of 25 (50 m)

UK 5-TWIN - Feed-through terminal block

1923021

<https://www.phoenixcontact.com/us/products/1923021>



NS 35/15 UNPERF 2000MM - DIN rail, unperforated

1201714

<https://www.phoenixcontact.com/us/products/1201714>



DIN rail, unperforated, similar to EN 60715, material: Steel, galvanized, passivated with a thick layer, Standard profile, color: silver, Pack of 25 (50 m)

NS 35/15 WH PERF 2000MM - DIN rail perforated

0806602

<https://www.phoenixcontact.com/us/products/0806602>



DIN rail perforated, similar to EN 60715, material: Steel, Galvanized, white passivated, Standard profile, color: white, Pack of 25 (50 m)

UK 5-TWIN - Feed-through terminal block

1923021

<https://www.phoenixcontact.com/us/products/1923021>



NS 35/15 WH UNPERF 2000MM-VPE 10 - DIN rail, unperforated

1204135

<https://www.phoenixcontact.com/us/products/1204135>



DIN rail, unperforated, similar to EN 60715, material: Steel, Galvanized, white passivated, Standard profile, color: silver, Pack of 10 (20 m)

NS 35/15 AL UNPERF 2000MM - DIN rail, unperforated

1201756

<https://www.phoenixcontact.com/us/products/1201756>



DIN rail, unperforated, similar to EN 60715, material: Aluminum, uncoated, Standard profile, color: silver

UK 5-TWIN - Feed-through terminal block

1923021

<https://www.phoenixcontact.com/us/products/1923021>



NS 35/15 ZN PERF 2000MM - DIN rail perforated

1206599

<https://www.phoenixcontact.com/us/products/1206599>



DIN rail perforated, similar to EN 60715, material: Steel, galvanized, Standard profile, color: silver, Pack of 25 (50 m)

NS 35/15 ZN UNPERF 2000MM - DIN rail, unperforated

1206586

<https://www.phoenixcontact.com/us/products/1206586>



DIN rail, unperforated, similar to EN 60715, material: Steel, galvanized, Standard profile, color: silver, Pack of 25 (50 m)

UK 5-TWIN - Feed-through terminal block

1923021

<https://www.phoenixcontact.com/us/products/1923021>



NS 35/15 CU UNPERF 2000MM-VPE 10 - DIN rail, unperforated

1201895

<https://www.phoenixcontact.com/us/products/1201895>



DIN rail, unperforated, similar to EN 60715, material: Copper, uncoated, Standard profile, color: copper-colored, Pack of 10 (20 m)

NS 35/15 CAP - End cap

1206573

<https://www.phoenixcontact.com/us/products/1206573>

DIN rail end piece, for DIN rail NS 35/15



UK 5-TWIN - Feed-through terminal block

1923021

<https://www.phoenixcontact.com/us/products/1923021>



NS 35/15-2,3 UNPERF 2000MM-VPE 10 - DIN rail, unperforated

1201798

<https://www.phoenixcontact.com/us/products/1201798>



DIN rail, unperforated, acc. to EN 60715, material: Steel, galvanized, passivated with a thick layer, Standard profile 2.3 mm, color: silver, Pack of 10 (20 m)

ZB 6:UNBEDRUCKT - Zack marker strip

1051003

<https://www.phoenixcontact.com/us/products/1051003>



Zack marker strip, Strip, white, unlabeled, can be labeled with: PLOTMARK, CMS-P1-PLOTTER, mounting type: snapped, for terminal block width: 6.2 mm, lettering field size: 6.15 x 10.5 mm, Number of individual labels: 10

UK 5-TWIN - Feed-through terminal block

1923021

<https://www.phoenixcontact.com/us/products/1923021>



ZB 6 CUS - Zack marker strip

0824992

<https://www.phoenixcontact.com/us/products/0824992>



Zack marker strip, can be ordered: Strip, white, labeled according to customer specifications, mounting type: snap into tall marker groove, for terminal block width: 6.2 mm, lettering field size: 6.15 x 10.5 mm, Number of individual labels: 10

ZB 6,LGS:FORTL.ZAHLEN - Zack marker strip

1051016

<https://www.phoenixcontact.com/us/products/1051016>



Zack marker strip, Strip, white, labeled, can be labeled with: CMS-P1-PLOTTER, printed horizontally: consecutive numbers 1 ... 10, 11 ... 20, etc. up to 491 ... 500, mounting type: snapped, for terminal block width: 6.2 mm, lettering field size: 6.15 x 10.5 mm, Number of individual labels: 10

UK 5-TWIN - Feed-through terminal block



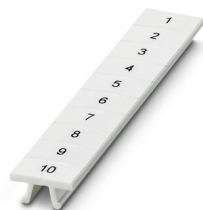
1923021

<https://www.phoenixcontact.com/us/products/1923021>

ZB 6,QR:FORTL.ZAHLEN - Zack marker strip

1051029

<https://www.phoenixcontact.com/us/products/1051029>



Zack marker strip, Strip, white, labeled, can be labeled with: CMS-P1-PLOTTER, Printed vertically: consecutive numbers 1 ... 10, 11 ... 20, etc. up to 491 ... 500, mounting type: snapped, for terminal block width: 6.2 mm, lettering field size: 6.15 x 10.5 mm, Number of individual labels: 10

ZB 6,LGS:GLEICHE ZAHLEN - Zack marker strip

1051032

<https://www.phoenixcontact.com/us/products/1051032>



Zack marker strip, Strip, white, labeled, can be labeled with: CMS-P1-PLOTTER, printed horizontally: Identical numbers 1 or 2, etc. up to 100, mounting type: snapped, for terminal block width: 6.2 mm, lettering field size: 6.15 x 10.5 mm, Number of individual labels: 10

UK 5-TWIN - Feed-through terminal block



1923021

<https://www.phoenixcontact.com/us/products/1923021>

ZB 6,LGS:L1-N,PE - Marker for terminal blocks

1051414

<https://www.phoenixcontact.com/us/products/1051414>



Marker for terminal blocks, Strip, white, labeled, can be labeled with: CMS-P1-PLOTTER, horizontal: L1, L2, L3, N, PE, L1, L2, L3, N, PE, mounting type: snapped, for terminal block width: 6.2 mm, lettering field size: 6.15 x 10.5 mm, Number of individual labels: 10

ZB 6,LGS:U-N - Marker for terminal blocks

1051430

<https://www.phoenixcontact.com/us/products/1051430>



Marker for terminal blocks, Strip, white, labeled, can be labeled with: CMS-P1-PLOTTER, printed horizontally: U, V, W, N, GND, U, V, W, N, GND, mounting type: snapped, for terminal block width: 6.2 mm, lettering field size: 6.15 x 10.5 mm, Number of individual labels: 10

UK 5-TWIN - Feed-through terminal block

1923021

<https://www.phoenixcontact.com/us/products/1923021>



UC-TM 6 - Marker for terminal blocks

0818085

<https://www.phoenixcontact.com/us/products/0818085>



Marker for terminal blocks, Sheet, white, unlabeled, can be labeled with: BLUEMARK ID COLOR, BLUEMARK ID, BLUEMARK CLED, PLOTMARK, CMS-P1-PLOTTER, mounting type: snapped, for terminal block width: 6.2 mm, lettering field size: 5.6 x 10.5 mm, Number of individual labels: 80

UC-TM 6 CUS - Marker for terminal blocks

0824589

<https://www.phoenixcontact.com/us/products/0824589>



Marker for terminal blocks, can be ordered: by sheet, white, labeled according to customer specifications, mounting type: snap into tall marker groove, for terminal block width: 6.2 mm, lettering field size: 5.6 x 10.5 mm, Number of individual labels: 80

UK 5-TWIN - Feed-through terminal block

1923021

<https://www.phoenixcontact.com/us/products/1923021>



UCT-TM 6 - Marker for terminal blocks

0828736

<https://www.phoenixcontact.com/us/products/0828736>



Marker for terminal blocks, Sheet, white, unlabeled, can be labeled with: TOPMARK NEO, TOPMARK LASER, BLUEMARK ID COLOR, BLUEMARK ID, BLUEMARK CLED, THERMOMARK PRIME, THERMOMARK CARD 2.0, THERMOMARK CARD, mounting type: snapped, for terminal block width: 6.2 mm, lettering field size: 5.6 x 10.5 mm, Number of individual labels: 60

UCT-TM 6 CUS - Marker for terminal blocks

0829602

<https://www.phoenixcontact.com/us/products/0829602>



Marker for terminal blocks, can be ordered: by sheet, white, labeled according to customer specifications, mounting type: snap into tall marker groove, for terminal block width: 6.2 mm, lettering field size: 5.6 x 10.5 mm, Number of individual labels: 60

UK 5-TWIN - Feed-through terminal block

1923021

<https://www.phoenixcontact.com/us/products/1923021>



CLIPFIX 35 - End clamp

3022218

<https://www.phoenixcontact.com/us/products/3022218>

Quick mounting end clamp for NS 35/7,5 DIN rail or NS 35/15 DIN rail, with marking option, width: 9.5 mm, color: gray



CLIPFIX 35-5 - End clamp

3022276

<https://www.phoenixcontact.com/us/products/3022276>

Quick mounting end clamp for NS 35/7,5 DIN rail or NS 35/15 DIN rail, with marking option, with parking option for FBS...5, FBS...6, KSS 5, KSS 6, width: 5.15 mm, color: gray



UK 5-TWIN - Feed-through terminal block

1923021

<https://www.phoenixcontact.com/us/products/1923021>

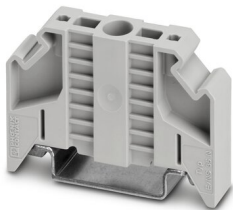


E/NS 35 N - End clamp

0800886

<https://www.phoenixcontact.com/us/products/0800886>

End clamp, width: 9.5 mm, color: gray



PSBJ 3/13/4 - Female test connector

0201304

<https://www.phoenixcontact.com/us/products/0201304>

Female test connector, number of positions: 1, color: silver



UK 5-TWIN - Feed-through terminal block

1923021

<https://www.phoenixcontact.com/us/products/1923021>



PSB 3/10/4 - Female test connector

0601292

<https://www.phoenixcontact.com/us/products/0601292>

Female test connector, number of positions: 1, color: silver



E/UK - End clamp

1201442

<https://www.phoenixcontact.com/us/products/1201442>

End clamp, material: PA, color: gray, Mounting on a DIN rail NS 32 or NS 35



UK 5-TWIN - Feed-through terminal block



1923021

<https://www.phoenixcontact.com/us/products/1923021>

E/UK 1 - End clamp

1201413

<https://www.phoenixcontact.com/us/products/1201413>



End clamps, for supporting the ends of double-level and three-level terminal blocks, width: 10 mm, color: gray

Phoenix Contact 2023 © - all rights reserved

<https://www.phoenixcontact.com>

Phoenix Contact USA
586 Fulling Mill Road
Middletown, PA 17057, United States
(+717) 944-1300
info@phoenixcon.com