

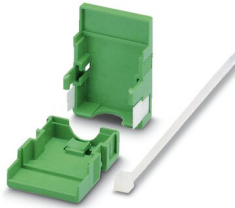
KGG-MC 1,5/ 4 - Cable housing

1834369

<https://www.phoenixcontact.com/us/products/1834369>



Please be informed that the data shown in this PDF document is generated from our online catalog. Please find the complete data in the user documentation. Our general terms of use for downloads are valid.



Cable housing, pitch: 3.81 mm, number of positions: 4, dimension a: 17.63 mm, color: green

Commercial data

Item number	1834369
Packing unit	1 pc
Minimum order quantity	10 pc
Sales key	AA08
Product key	AAHZDB
Catalog page	Page 242 (C-1-2013)
GTIN	4017918051884
Weight per piece (including packing)	4.65 g
Weight per piece (excluding packing)	4.4 g
Customs tariff number	39269097
Country of origin	PL

KGG-MC 1,5/ 4 - Cable housing

1834369

<https://www.phoenixcontact.com/us/products/1834369>



Technical data

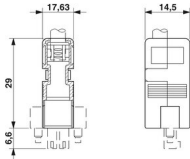
Product properties

Product type	Cable housing
Product family	KGG-MC 1,5
Number of positions	4
Pitch	3.81 mm

Material specifications

Color	green
Flammability rating according to UL 94	HB
Insulating material group	I
Insulating material	ABS

Dimensions

Dimensional drawing	
Width	14.5 mm
Height	35.6 mm
Pitch	3.81 mm

KGG-MC 1,5/ 4 - Cable housing

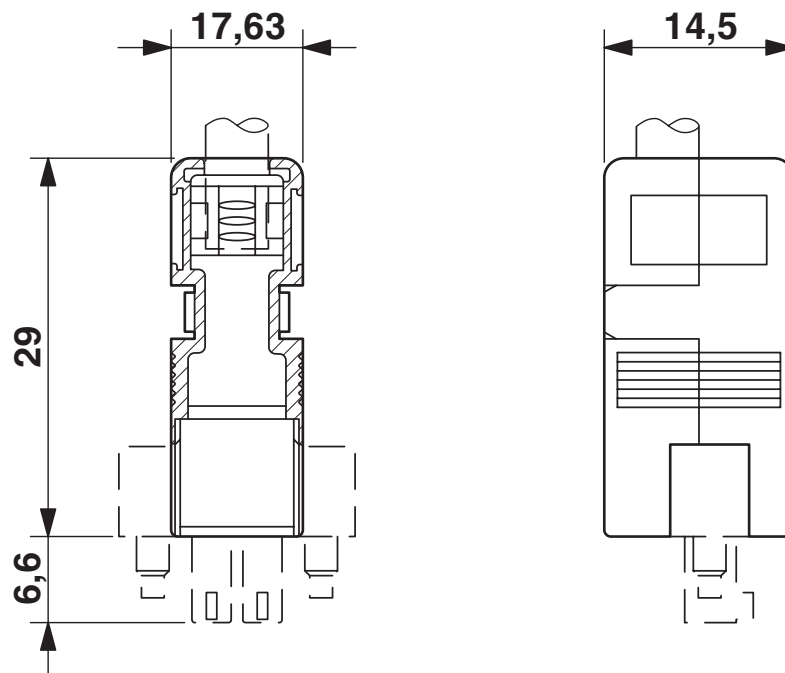
1834369

<https://www.phoenixcontact.com/us/products/1834369>



Drawings

Dimensional drawing



KGG-MC 1,5/ 4 - Cable housing

1834369

<https://www.phoenixcontact.com/us/products/1834369>



Approvals

🔗 To download certificates, visit the product detail page: <https://www.phoenixcontact.com/us/products/1834369>



EAC

Approval ID: B.01687

KGG-MC 1,5/ 4 - Cable housing

1834369

<https://www.phoenixcontact.com/us/products/1834369>



Classifications

ECLASS

ECLASS-11.0	27460402
ECLASS-12.0	27460402
ECLASS-13.0	27460402

ETIM

ETIM 8.0	EC002943
----------	----------

UNSPSC

UNSPSC 21.0	39121400
-------------	----------

KGG-MC 1,5/ 4 - Cable housing



1834369

<https://www.phoenixcontact.com/us/products/1834369>

Environmental product compliance

China RoHS	Environmentally friendly use period: unlimited = EFUP-e
	No hazardous substances above threshold values

KGG-MC 1,5/ 4 - Cable housing

1834369

<https://www.phoenixcontact.com/us/products/1834369>



Accessories

SBS10:UNBEDRUCKT - Marker card

1007248

<https://www.phoenixcontact.com/us/products/1007248>



Marker card, Card, white, unlabeled, can be labeled with: Marker pen, perforated, mounting type: snapped, snap into flat marker groove, for terminal block width: 10 mm, lettering field size: 6 x 10.1 mm, Number of individual labels: 250

CUC-DST-ABK-CP6,5 - Bend protection sleeve

1419790

<https://www.phoenixcontact.com/us/products/1419790>



Bend protection sleeve, degree of protection: IP20, color: black

KGG-MC 1,5/ 4 - Cable housing



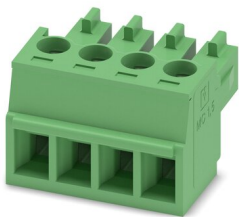
1834369

<https://www.phoenixcontact.com/us/products/1834369>

MC 1,5/ 4-ST-3,81 - PCB connector

1803594

<https://www.phoenixcontact.com/us/products/1803594>

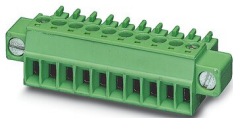


PCB connector, nominal cross section: 1.5 mm², color: green, nominal current: 8 A, rated voltage (III/2): 160 V, contact surface: Tin, contact connection type: Socket, number of potentials: 4, number of rows: 1, number of positions: 4, number of connections: 4, product range: MC 1,5/...-ST, pitch: 3.81 mm, connection method: Screw connection with tension sleeve, screw head form: L Slotted, conductor/PCB connection direction: 0 °, plug-in system: COMBICON MC 1,5, locking: without, mounting: without, type of packaging: packed in cardboard

MC 1,5/ 4-STF-3,81 - PCB connector

1827729

<https://www.phoenixcontact.com/us/products/1827729>



PCB connector, nominal cross section: 1.5 mm², color: green, nominal current: 8 A, rated voltage (III/2): 160 V, contact surface: Tin, contact connection type: Socket, number of potentials: 4, number of rows: 1, number of positions: 4, number of connections: 4, product range: MC 1,5/...-STF, pitch: 3.81 mm, connection method: Screw connection with tension sleeve, screw head form: L Slotted, conductor/PCB connection direction: 0 °, plug-in system: COMBICON MC 1,5, locking: Screw locking mechanism, mounting: Screw flange, type of packaging: packed in cardboard

KGG-MC 1,5/ 4 - Cable housing

1834369

<https://www.phoenixcontact.com/us/products/1834369>



IMC 1,5/ 4-ST-3,81 - Printed-circuit board connector

1857906

<https://www.phoenixcontact.com/us/products/1857906>



PCB connector, nominal cross section: 1.5 mm², color: green, nominal current: 8 A, rated voltage (III/2): 160 V, contact surface: Tin, contact connection type: Pin, number of potentials: 4, number of rows: 1, number of positions: 4, number of connections: 4, product range: IMC 1,5/...-ST, pitch: 3.81 mm, connection method: Screw connection with tension sleeve, screw head form: L Slotted, conductor/PCB connection direction: 0 °, plug-in system: COMBICON MC 1,5, locking: without, mounting: without, type of packaging: packed in cardboard

Phoenix Contact 2023 © - all rights reserved

<https://www.phoenixcontact.com>

Phoenix Contact USA
586 Fulling Mill Road
Middletown, PA 17057, United States
(+717) 944-1300
info@phoenixcon.com