

HC-HS 6-ESTS - Contact insert

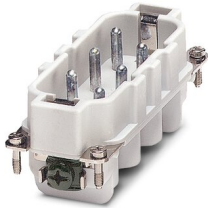


1773129

<https://www.phoenixcontact.com/us/products/1773129>

Please be informed that the data shown in this PDF document is generated from our online catalog. Please find the complete data in the user documentation. Our general terms of use for downloads are valid.

HEAVYCON male insert, HS6 series, 6-pos., screw connection



Commercial data

Item number	1773129
Packing unit	1 pc
Minimum order quantity	1 pc
Note	Made to order (non-returnable)
Sales key	BF61
Product key	BF7ABI
Catalog page	Page 459 (C-4-2013)
GTIN	4017918037635
Weight per piece (including packing)	97.36 g
Weight per piece (excluding packing)	96 g
Customs tariff number	85366990
Country of origin	DE

HC-HS 6-ESTS - Contact insert

1773129

<https://www.phoenixcontact.com/us/products/1773129>



Technical data

Notes

General	For housing HC-B16
---------	--------------------

Mounting

Assembly instructions	Connectors may be operated only when there is no load/voltage.
-----------------------	--

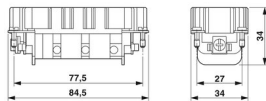
Product properties

Type	B16 B32
Product type	Contact insert with a fixed no. of positions
Number of positions	6
Connection profile	6+PE
Contact numbering	1 - 6
Series	HC-HS

Insulation characteristics

Overvoltage category	III
Degree of pollution	3

Dimensions

Dimensional drawing	
Width	34 mm
Height	34 mm
Length	84.5 mm
Drill hole distance, horizontal	77.5 mm

Connection data

Connection technology

Connection technology	Screw connection
Connection in acc. with standard	IEC / EN

Conductor connection

Conductor cross section	0.5 mm² ... 6 mm²
Connection cross section AWG	20 ... 10
Tightening torque	1.2 Nm
Stripping length of the individual wire	10 mm

Electrical properties

HC-HS 6-ESTS - Contact insert



1773129

<https://www.phoenixcontact.com/us/products/1773129>

Rated voltage (III/3)	500 V
Rated voltage for power contacts	400/690 V
Rated surge voltage	6 kV
Rated current	35 A

Mechanical properties

Mechanical data

Insertion/withdrawal cycles	≥ 500
-----------------------------	-------

Material specifications

Flammability rating according to UL 94	V0
Contact material	Copper alloy
Contact surface material	Ag
Contact carrier material	PA

Environmental and real-life conditions

Ambient conditions

Ambient temperature (operation)	-40 °C ... 125 °C (including heating up of contacts)
---------------------------------	--

Standards and regulations

Constructional and testing regulations	DIN VDE 0627/86
	DIN VDE 0110/02.79
	DIN VDE 0110-1/04.97
	IEC 60664-1, DIN IEC 60512
Tests	DIN VDE 0627/86
	DIN VDE 0110/02.79
	DIN VDE 0110-1/04.97
	IEC 60664-1, DIN IEC 60512

HC-HS 6-ESTS - Contact insert

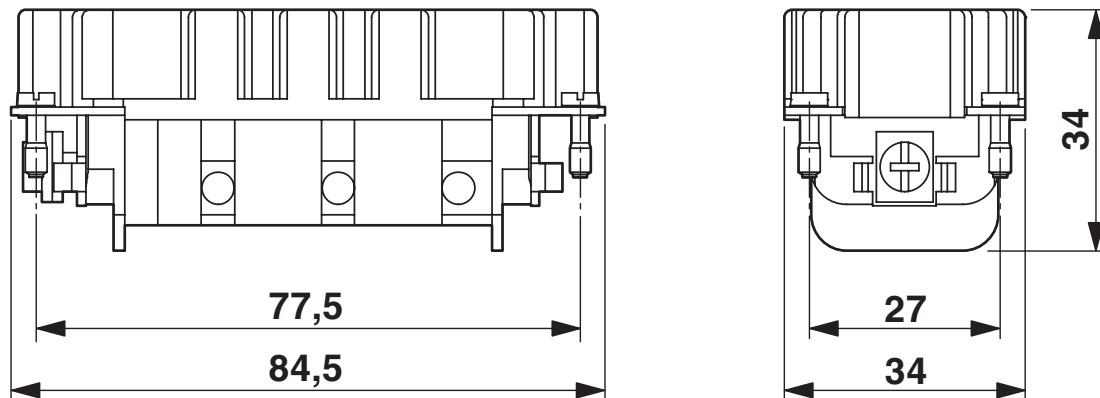
1773129

<https://www.phoenixcontact.com/us/products/1773129>



Drawings

Dimensional drawing

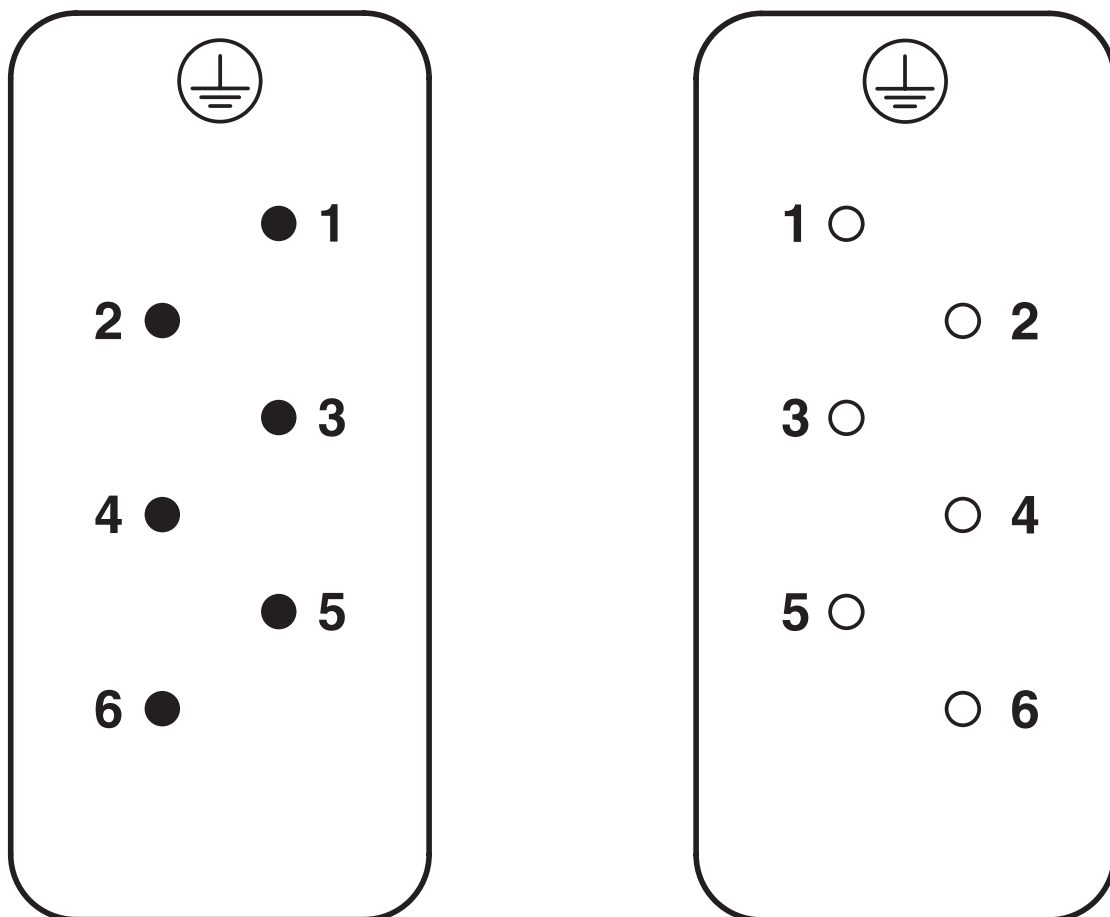


Male insert

1773129

<https://www.phoenixcontact.com/us/products/1773129>

Schematic diagram



Connector pin assignment, connection side

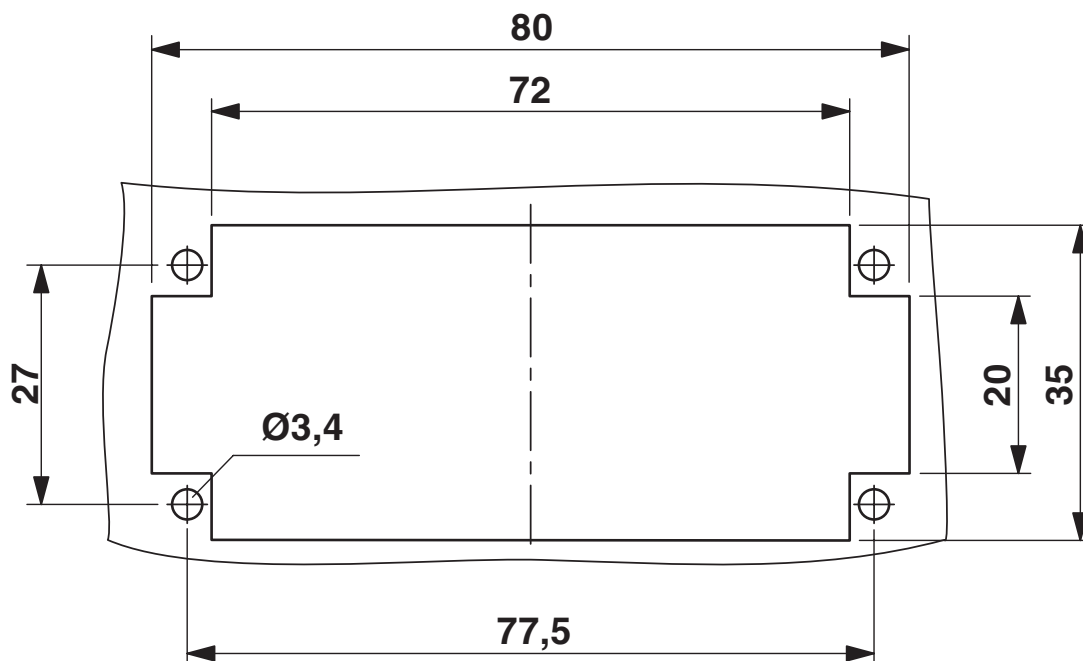
HC-HS 6-ESTS - Contact insert

1773129

<https://www.phoenixcontact.com/us/products/1773129>

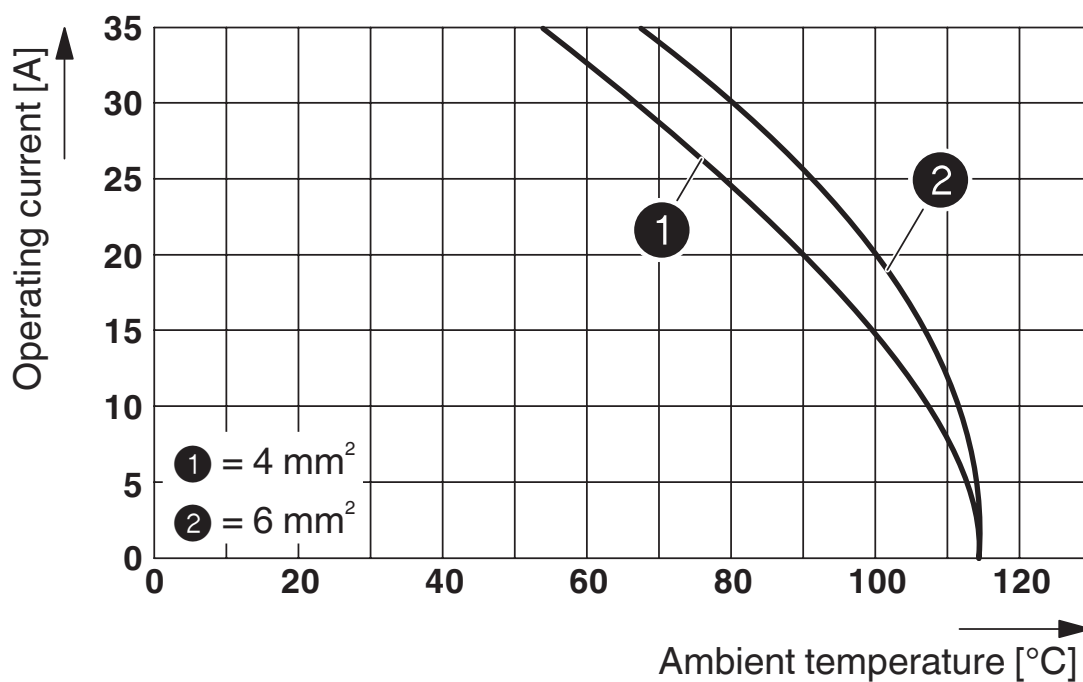


Dimensional drawing



Mounting cutout

Diagram



Derating diagram: HC-HS...S series

HC-HS 6-ESTS - Contact insert

1773129

<https://www.phoenixcontact.com/us/products/1773129>



Classifications

ECLASS

ECLASS-11.0	27440205
ECLASS-13.0	27440223

HC-HS 6-ESTS - Contact insert



1773129

<https://www.phoenixcontact.com/us/products/1773129>

Environmental product compliance

China RoHS	Environmentally friendly use period: unlimited = EFUP-e
	No hazardous substances above threshold values

Phoenix Contact 2023 © - all rights reserved
<https://www.phoenixcontact.com>

Phoenix Contact USA
586 Fulling Mill Road
Middletown, PA 17057, United States
(+717) 944-1300
info@phoenixcon.com