

HC-DS-PG16-Z - Pressure screw

1772638

<https://www.phoenixcontact.com/us/products/1772638>



Please be informed that the data shown in this PDF document is generated from our online catalog. Please find the complete data in the user documentation. Our general terms of use for downloads are valid.

Pressure screws, with strain relief clamps, nickel-plated brass, clamping range 11 mm ... 15 mm, type Pg16



Commercial data

Item number	1772638
Packing unit	1 pc
Minimum order quantity	10 pc
Note	Made to order (non-returnable)
Sales key	BF68
Product key	BF7DFX
Catalog page	Page 556 (C-4-2013)
GTIN	4017918037291
Weight per piece (including packing)	36.5 g
Weight per piece (excluding packing)	33.21 g
Customs tariff number	74199990
Country of origin	DE

HC-DS-PG16-Z - Pressure screw

1772638

<https://www.phoenixcontact.com/us/products/1772638>

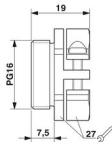


Technical data

Product properties

Product type	Half screw connection
Pg screw connection	Pg13,5

Dimensions

Dimensional drawing	
Wrench size, union nut	27 mm
Clamping range of the strain relief clip	11.00 mm ... 15.00 mm

Material specifications

Material	Brass, nickel-plated
----------	----------------------

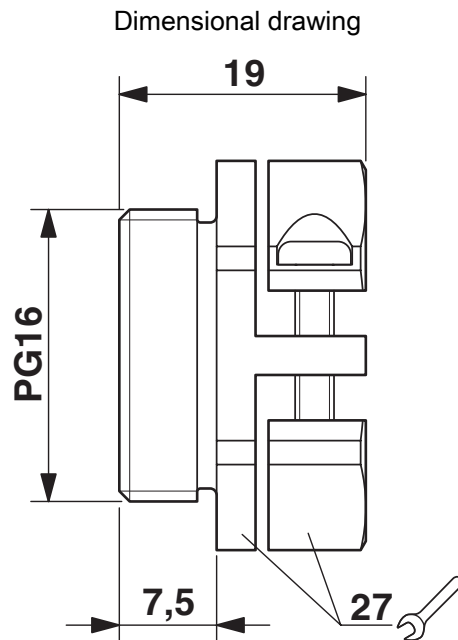
HC-DS-PG16-Z - Pressure screw

1772638

<https://www.phoenixcontact.com/us/products/1772638>



Drawings



Dimensional drawing

HC-DS-PG16-Z - Pressure screw

1772638

<https://www.phoenixcontact.com/us/products/1772638>



Classifications

ETIM

ETIM 7.0	EC000441
----------	----------

UNSPSC

UNSPSC 21.0	39121311
-------------	----------

HC-DS-PG16-Z - Pressure screw



1772638

<https://www.phoenixcontact.com/us/products/1772638>

Environmental product compliance

China RoHS	Environmentally Friendly Use Period = 50 years
	For information on hazardous substances, refer to the manufacturer's declaration available under "Downloads"

Phoenix Contact 2023 © - all rights reserved
<https://www.phoenixcontact.com>

Phoenix Contact USA
586 Fulling Mill Road
Middletown, PA 17057, United States
(+717) 944-1300
info@phoenixcon.com