

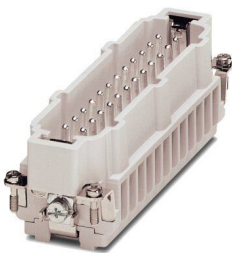
# HC-B 24-ESTS 48 - Contact insert



1772104

<https://www.phoenixcontact.com/us/products/1772104>

Please be informed that the data shown in this PDF document is generated from our online catalog. Please find the complete data in the user documentation. Our general terms of use for downloads are valid.



HEAVYCON male insert, B24 series, 24-pos., screw connection, numbering 25 ... 48

## Commercial data

Item number	1772104
Packing unit	1 pc
Minimum order quantity	1 pc
Note	Made to order (non-returnable)
Sales key	BF61
Product key	BF7ABC
Catalog page	Page 345 (PC-2007)
GTIN	4017918036775
Weight per piece (including packing)	140.81 g
Weight per piece (excluding packing)	140.81 g
Customs tariff number	85366990
Country of origin	DE

# HC-B 24-ESTS 48 - Contact insert



1772104

<https://www.phoenixcontact.com/us/products/1772104>

## Technical data

### Notes

General	For HEAVYCON-ADVANCE housing of B24 type and HEAVYCON housing of B24/B48 type
---------	---

### Mounting

Assembly instructions	For housings of type B16/B32. Connectors may only be actuated when there is no load/voltage.
-----------------------	--

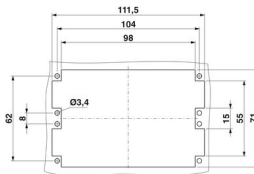
### Product properties

Type	B24
Product type	Contact insert with a fixed no. of positions
Number of positions	24
Connection profile	24+PE
Contact numbering	25 - 48

### Insulation characteristics

Overvoltage category	III
Degree of pollution	3

### Dimensions

Dimensional drawing	
Width	34 mm
Height	35.5 mm
Length	111 mm

### Connection data

#### Connection technology

Connection technology	Screw connection
-----------------------	------------------

#### Conductor connection

Conductor cross section	0.5 mm <sup>2</sup> ... 2.5 mm <sup>2</sup> (applies to stranded conductors with ferrules) 0.5 mm <sup>2</sup> ... 4 mm <sup>2</sup> (PE screw)
Connection cross section AWG	20 ... 14 20 ... 12 (PE screw)
Tightening torque	0.5 Nm
Stripping length of the individual wire	7 mm

### Electrical properties

# HC-B 24-ESTS 48 - Contact insert



1772104

<https://www.phoenixcontact.com/us/products/1772104>

Rated voltage (III/3)	500 V
Rated surge voltage	6 kV
Rated current	16 A

## Mechanical properties

### Mechanical data

Insertion/withdrawal cycles	≥ 500
-----------------------------	-------

## Material specifications

Flammability rating according to UL 94	V0
Contact material	Copper alloy
Contact surface material	Ag
Contact carrier material	PA

## Environmental and real-life conditions

### Ambient conditions

Ambient temperature (operation)	-40 °C ... 125 °C (including heating up of contacts)
---------------------------------	--

## Standards and regulations

Constructional and testing regulations	DIN VDE 0627/86
	DIN VDE 0110/02.79
	DIN VDE 0110-1/04.97
	IEC 60664-1, DIN IEC 60512
	IEC 60352
Tests	DIN VDE 0627/86
	DIN VDE 0110/02.79
	DIN VDE 0110-1/04.97
	IEC 60664-1, DIN IEC 60512
	IEC 60352

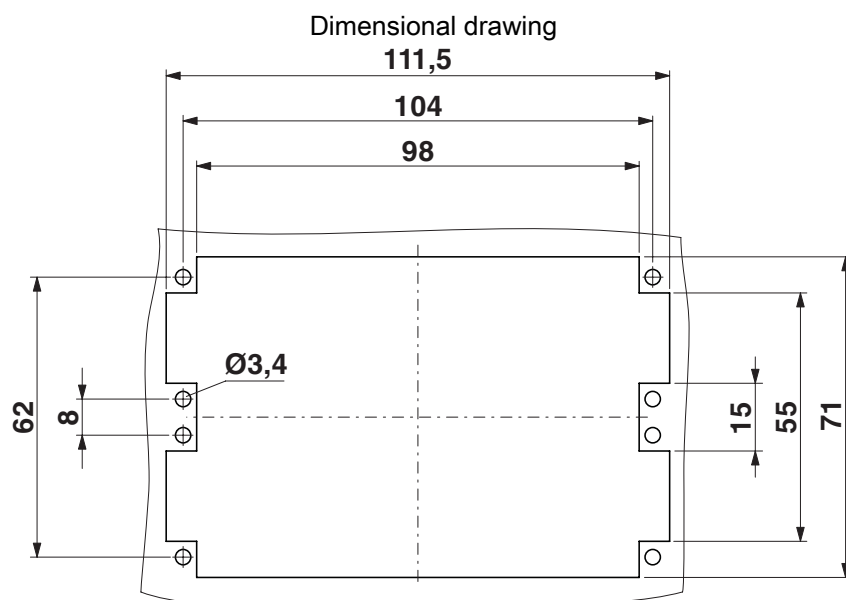
# HC-B 24-ESTS 48 - Contact insert



1772104

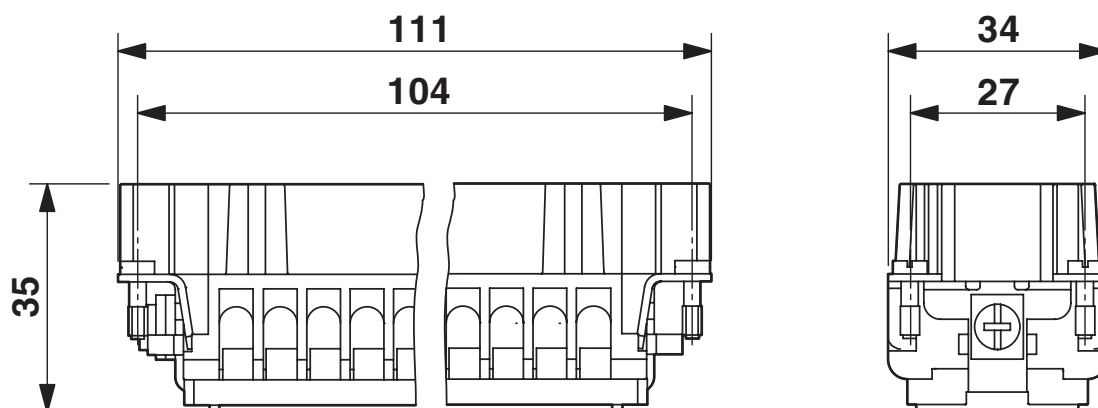
<https://www.phoenixcontact.com/us/products/1772104>

## Drawings



Mounting cutout

Dimensional drawing



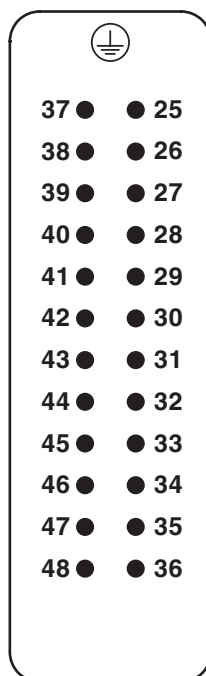
Male insert

# HC-B 24-ESTS 48 - Contact insert

1772104

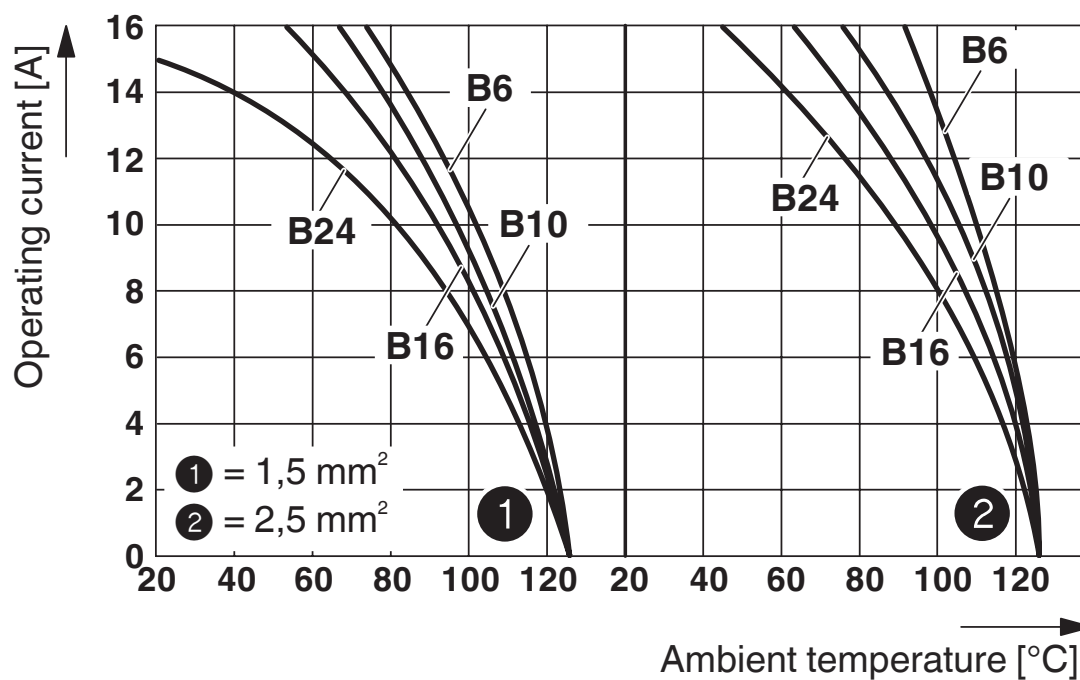
<https://www.phoenixcontact.com/us/products/1772104>

Schematic diagram



Connector pin assignment, connection side

Diagram



Derating diagram

# HC-B 24-ESTS 48 - Contact insert



1772104

<https://www.phoenixcontact.com/us/products/1772104>

## Classifications

### ECLASS

ECLASS-11.0	27440205
ECLASS-13.0	27440223

# HC-B 24-ESTS 48 - Contact insert



1772104

<https://www.phoenixcontact.com/us/products/1772104>

## Environmental product compliance

China RoHS	Environmentally friendly use period: unlimited = EFUP-e
	No hazardous substances above threshold values

# HC-B 24-ESTS 48 - Contact insert



1772104

<https://www.phoenixcontact.com/us/products/1772104>

## Accessories

### HC-B-PES - Screw

1604997

<https://www.phoenixcontact.com/us/products/1604997>

PE screw, for contact inserts HC-B / HC-BB / HC-DD / HC-D40 / HC-D64



---

### HC-CST - Coding element

1676857

<https://www.phoenixcontact.com/us/products/1676857>

Coding peg for coding up to 16 connectors





# HC-B 24-ESTS 48 - Contact insert

1772104

<https://www.phoenixcontact.com/us/products/1772104>



## HC-CBU - Coding element

1676860

<https://www.phoenixcontact.com/us/products/1676860>



Coding socket for coding up to 16 connectors

---

## HC-CB - Coding bolt

1772722

<https://www.phoenixcontact.com/us/products/1772722>



Coding pin, prevents mismatching of up to six connectors with an identical number of positions

# HC-B 24-ESTS 48 - Contact insert

1772104

<https://www.phoenixcontact.com/us/products/1772104>



## HC-B-3PE - PE multiplier

1644326

<https://www.phoenixcontact.com/us/products/1644326>

PE multiplier, for 3 PE connections, for HC-B / HC-BB / HC-DD / HC-D40 / HC-D64 contact inserts



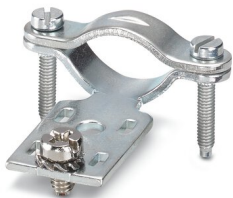
---

## HC-B-ZG - Strain relief clamp

1685327

<https://www.phoenixcontact.com/us/products/1685327>

Strain relief clamps contact inserts of series: B-, BB-, D 40, D 64, DD and HV, straight cable exit



# HC-B 24-ESTS 48 - Contact insert

1772104

<https://www.phoenixcontact.com/us/products/1772104>



## HC-B-ZS - Strain relief clamp

1685330

<https://www.phoenixcontact.com/us/products/1685330>



Strain relief clamps contact inserts of series: B-, BB-, D 40, D 64, DD and HV, lateral cable exit

---

## HC-SMR-B24 - DIN rail mounting frame

1687985

<https://www.phoenixcontact.com/us/products/1687985>



HEAVYCON DIN rail mounting frame, for contact inserts of type B24

---

Phoenix Contact 2023 © - all rights reserved  
<https://www.phoenixcontact.com>

Phoenix Contact USA  
586 Fulling Mill Road  
Middletown, PA 17057, United States  
(+717) 944-1300  
[info@phoenixcon.com](mailto:info@phoenixcon.com)