

# SACC-BP-M-M12/M15-6-THR PW - Housing screw connection



1420826

<https://www.phoenixcontact.com/us/products/1420826>

Please be informed that the data shown in this PDF document is generated from our online catalog. Please find the complete data in the user documentation. Our general terms of use for downloads are valid.



Housing screw connection, Pin, M12, Rear mounting, M15 x 1, THR- und Wellenlötkontakte, Alternative product in accordance with RoHS II without Exemption 6c (Pb <0.1%) item no.: 1239326

## Your advantages

- Easy device integration, thanks to mechanical port screw connections with threaded fastening
- Efficient PCB assembly: two-piece connectors for THR soldering

## Commercial data

Item number	1420826
Packing unit	1 pc
Minimum order quantity	20 pc
Sales key	AB23
Product key	ABQADC
GTIN	4055626280394
Weight per piece (including packing)	11.558 g
Weight per piece (excluding packing)	11.558 g
Customs tariff number	85366990
Country of origin	DE

# SACC-BP-M-M12/M15-6-THR PW - Housing screw connection



1420826

<https://www.phoenixcontact.com/us/products/1420826>

## Technical data

### Notes

General	The electrical and mechanical data specified assume that the connector pair is correctly locked and mounted. If the connector is unlocked and if there is a danger of contamination, the connector must be sealed using a protective cap > IP54. Influences arising from litz wires, cables or PCB assembly must also be taken into consideration.
General	Lock nut is included in the scope of delivery

### Product properties

Product type	Panel mounting base
Thread type	M12

### Material specifications

Material	Brass, nickel-plated
Flammability rating according to UL 94	V0
Seal material	FKM

### Connector

Connection 1	
Head design	Pin
Head thread type	M12

### Mechanical properties

Mechanical data	
Insertion/withdrawal cycles	> 100

### Environmental and real-life conditions

Ambient conditions	
Degree of protection (when plugged in)	IP67 (correctly plugged in and locked)
Degree of protection	IP67 (correctly plugged in and locked)
	IP67, when in locked state
Ambient temperature (operation)	-25 °C ... 85 °C (Plug / socket)
	-40 °C ... 85 °C (without mechanical actuation)

### Mounting

Mounting type	Rear mounting M15 x 1
Connection method	THR- und Wellenlötkontakte

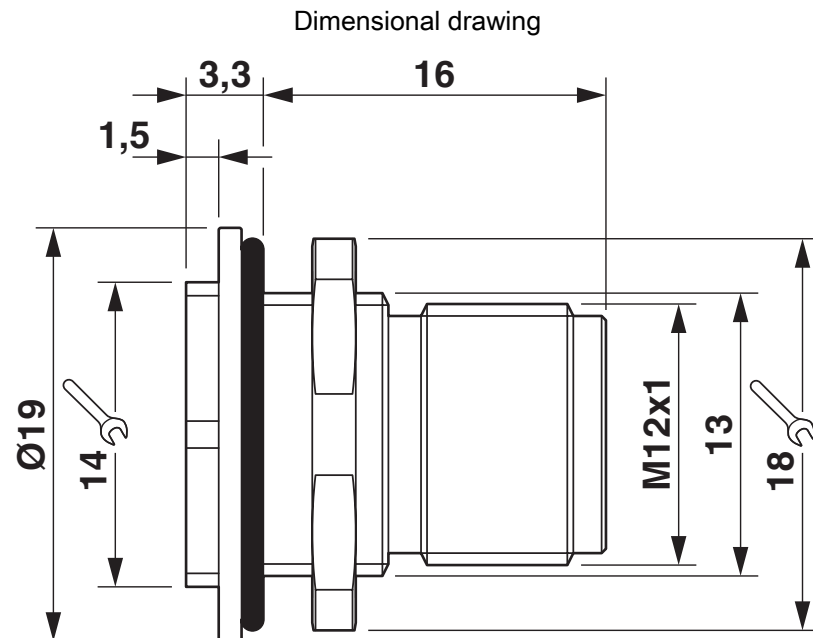
# SACC-BP-M-M12/M15-6-THR PW - Housing screw connection



1420826

<https://www.phoenixcontact.com/us/products/1420826>

## Drawings



# SACC-BP-M-M12/M15-6-THR PW - Housing screw connection



1420826

<https://www.phoenixcontact.com/us/products/1420826>

## Approvals

🔗 To download certificates, visit the product detail page: <https://www.phoenixcontact.com/us/products/1420826>



**EAC**

Approval ID: B.01687

# SACC-BP-M-M12/M15-6-THR PW - Housing screw connection



1420826

<https://www.phoenixcontact.com/us/products/1420826>

## Classifications

### ECLASS

ECLASS-11.0	27440224
ECLASS-12.0	27440224
ECLASS-13.0	27440224

### UNSPSC

UNSPSC 21.0	39121400
-------------	----------

# SACC-BP-M-M12/M15-6-THR PW - Housing screw connection



1420826  
<https://www.phoenixcontact.com/us/products/1420826>

## Environmental product compliance

REACH SVHC	Lead 7439-92-1
China RoHS	Environmentally Friendly Use Period = 50 years
	For information on hazardous substances, refer to the manufacturer's declaration available under "Downloads"

# SACC-BP-M-M12/M15-6-THR PW - Housing screw connection



1420826

<https://www.phoenixcontact.com/us/products/1420826>

## Accessories

### PROT-M12 FS - Sealing cap

1560251

<https://www.phoenixcontact.com/us/products/1560251>



M12 sealing cap for unoccupied M12 plugs of the sensor/actuator cable, flush-type plugs and I/O devices in the field

---

### PROT-M12 FS-M - Sealing cap

1430488

<https://www.phoenixcontact.com/us/products/1430488>



M12 metal sealing cap for unoccupied M12 plugs of the sensor/actuator cable, flush-type plugs and I/O devices in the field

---

Phoenix Contact 2023 © - all rights reserved

<https://www.phoenixcontact.com>

Phoenix Contact USA  
586 Fulling Mill Road  
Middletown, PA 17057, United States  
(+717) 944-1300  
[info@phoenixcon.com](mailto:info@phoenixcon.com)