

MBK 5/E-TG - Disconnect terminal block



1415089

<https://www.phoenixcontact.com/us/products/1415089>

Please be informed that the data shown in this PDF document is generated from our online catalog. Please find the complete data in the user documentation. Our general terms of use for downloads are valid.



Disconnect terminal block, Current and voltage are determined by the plug used., nom. voltage: 500 V, nominal current: 16 A, connection method: Screw connection, Rated cross section: 4 mm², cross section: 0.2 mm² - 4 mm², mounting: NS 15, color: gray

Your advantages

- Design width of just 6.2 mm

Commercial data

Item number	1415089
Packing unit	1 pc
Minimum order quantity	50 pc
Sales key	BE12
Product key	BE1261
Catalog page	Page 506 (C-1-2019)
GTIN	4017918021375
Weight per piece (including packing)	7.774 g
Weight per piece (excluding packing)	7.314 g
Customs tariff number	85369010
Country of origin	DE

Technical data

Notes

General	Current and voltage are determined by the plug used.
---------	--

Product properties

Product type	Disconnect terminal block
Number of connections	2
Number of rows	1
Potentials	1

Insulation characteristics

Overvoltage category	III
Degree of pollution	3

Electrical properties

Rated surge voltage	6 kV
Maximum power dissipation for nominal condition	1.02 W

Connection data

Number of connections per level	2
Nominal cross section	4 mm ²

Level 1 above 1 below 1

Screw thread	M3
Tightening torque	0.6 ... 0.8 Nm
Stripping length	9 mm
Internal cylindrical gage	A3
Connection in acc. with standard	IEC 60947-7-1
Conductor cross section rigid	0.2 mm ² ... 4 mm ²
Cross section AWG	24 ... 12 (converted acc. to IEC)
Conductor cross section flexible	0.2 mm ² ... 4 mm ²
Conductor cross section, flexible [AWG]	24 ... 12 (converted acc. to IEC)
Conductor cross-section flexible (ferrule without plastic sleeve)	0.25 mm ² ... 2.5 mm ²
Flexible conductor cross section (ferrule with plastic sleeve)	0.25 mm ² ... 2.5 mm ²
Cross-section with insertion bridge, rigid	1.5 mm ²
Cross-section with insertion bridge, flexible	1.5 mm ²
2 conductors with same cross section, solid	0.2 mm ² ... 1.5 mm ²
2 conductors with same cross section, flexible	0.2 mm ² ... 1.5 mm ²
2 conductors with same cross section, flexible, with ferrule without plastic sleeve	0.25 mm ² ... 1.5 mm ²
2 conductors with the same cross section, flexible, with TWIN ferrule with plastic sleeve	0.5 mm ² ... 1.5 mm ²
Nominal current	16 A
Maximum load current	16 A (with 4 mm ² conductor cross section)

MBK 5/E-TG - Disconnect terminal block



1415089

<https://www.phoenixcontact.com/us/products/1415089>

Nominal voltage	500 V
Nominal cross section	4 mm ²

Dimensions

Width	6.2 mm
End cover width	1 mm

Material specifications

Color	gray
Flammability rating according to UL 94	V2
Insulating material group	I
Insulating material	PA

Mechanical properties

Mechanical data

Open side panel	Yes
-----------------	-----

Environmental and real-life conditions

Ambient conditions

Ambient temperature (operation)	-60 °C ... 105 °C (max. short-term operating temperature RTI Elec.)
Ambient temperature (storage/transport)	-25 °C ... 60 °C (for a short time, not exceeding 24 h, -60 °C to +70 °C)
Ambient temperature (assembly)	-5 °C ... 70 °C
Ambient temperature (actuation)	-5 °C ... 70 °C
Permissible humidity (storage/transport)	30 % ... 70 %

Standards and regulations

Connection in acc. with standard	IEC 60947-7-1
----------------------------------	---------------

Mounting

Mounting type	NS 15
---------------	-------

MBK 5/E-TG - Disconnect terminal block



1415089

<https://www.phoenixcontact.com/us/products/1415089>

Drawings

Circuit diagram



MBK 5/E-TG - Disconnect terminal block




1415089


<https://www.phoenixcontact.com/us/products/1415089>

Approvals

To download certificates, visit the product detail page: <https://www.phoenixcontact.com/us/products/1415089>

 CSA Approval ID: 13631				
	Nominal voltage U_N	Nominal current I_N	Cross section AWG	Cross section mm^2
	300 V	15 A	28 - 12	-

 EAC Approval ID: RU C-DE.BL08.B.00534				
---	--	--	--	--

 cULus Recognized Approval ID: E60425				
	Nominal voltage U_N	Nominal current I_N	Cross section AWG	Cross section mm^2
Use group B				
	300 V	20 A	28 - 12	-
Use group C				
	300 V	20 A	28 - 12	-
Use group F				
	500 V	20 A	28 - 12	-
Use group D				
	600 V	5 A	28 - 12	-

MBK 5/E-TG - Disconnect terminal block



1415089

<https://www.phoenixcontact.com/us/products/1415089>

Classifications

ECLASS

ECLASS-11.0	27141126
ECLASS-12.0	27141126
ECLASS-13.0	27250108

ETIM

ETIM 8.0	EC000902
----------	----------

UNSPSC

UNSPSC 21.0	39121400
-------------	----------

MBK 5/E-TG - Disconnect terminal block



1415089

<https://www.phoenixcontact.com/us/products/1415089>

Environmental product compliance

China RoHS	Environmentally friendly use period: unlimited = EFUP-e
	No hazardous substances above threshold values

MBK 5/E-TG - Disconnect terminal block

1415089

<https://www.phoenixcontact.com/us/products/1415089>



Accessories

i Note: Applying some accessories below might limit this product.

EB 3- 6 - Insertion bridge

0201142

<https://www.phoenixcontact.com/us/products/0201142>

Insertion bridge, pitch: 6.2 mm, number of positions: 3, color: gray



i Max. current carrying capacity: 16 A

EB 2- 6 - Insertion bridge

0201155

<https://www.phoenixcontact.com/us/products/0201155>

Insertion bridge, pitch: 6.2 mm, number of positions: 2, color: gray



i Max. current carrying capacity: 16 A

MBK 5/E-TG - Disconnect terminal block

1415089

<https://www.phoenixcontact.com/us/products/1415089>




EB 10- 6 - Insertion bridge

0201139

<https://www.phoenixcontact.com/us/products/0201139>



Insertion bridge, pitch: 6.2 mm, number of positions: 10, color: gray

 Max. current carrying capacity: 16 A

D-MBK 5/E-T - End cover

1413706

<https://www.phoenixcontact.com/us/products/1413706>



End cover, length: 28 mm, width: 1 mm, height: 30.3 mm, color: gray

MBK 5/E-TG - Disconnect terminal block

1415089

<https://www.phoenixcontact.com/us/products/1415089>



SZS 0,6X3,5 - Screwdriver

1205053

<https://www.phoenixcontact.com/us/products/1205053>

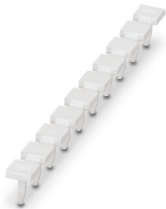


Actuation tool, for ST terminal blocks, insulated, also suitable for use as a bladed screwdriver, size: 0.6 x 3.5 x 100 mm, 2-component grip, with non-slip grip

BN-ZB 6,2/WH CUS - Marker pin Zack strip

0824276

<https://www.phoenixcontact.com/us/products/0824276>



Marker pin Zack strip, can be ordered: Strip, white, labeled according to customer specifications, mounting type: plug in, for terminal block width: 6.2 mm, lettering field size: 4 x 4 mm

MBK 5/E-TG - Disconnect terminal block



1415089

<https://www.phoenixcontact.com/us/products/1415089>

ST-K 4 - Isolating plugs

5025462

<https://www.phoenixcontact.com/us/products/5025462>



Isolating plug, silver-plated, can be used in UK...-TG, UKK...-TG, UDK...-TG, MBK...-TG, DIK...-TG, DOK...-TG, and ZFK...-TG disconnect terminal blocks, color: gray

ST-BE - Component connector

2802316

<https://www.phoenixcontact.com/us/products/2802316>



Component connector, to connect 2-pos. components to the basic terminal block, to be secured with screw-type clamping units, 19 mm high, max. 16 A

MBK 5/E-TG - Disconnect terminal block

1415089

<https://www.phoenixcontact.com/us/products/1415089>



ST-BE-LA 24 - Component connector

2802374

<https://www.phoenixcontact.com/us/products/2802374>



Component plug, with light indicator, to connect 2-pos. components into the basic terminal block, height: 19 mm, color: Gray, voltage light indicator: 24 V DC

ST-BE-LA230 - Component connector

2802387

<https://www.phoenixcontact.com/us/products/2802387>



Component plug, with light indicator, to connect 2-pos. components into the basic terminal block, height: 19 mm, color: gray, voltage light indicator: 230 V AC/DC

MBK 5/E-TG - Disconnect terminal block

1415089

<https://www.phoenixcontact.com/us/products/1415089>



ST-1N4007 - Component connector

2802329

<https://www.phoenixcontact.com/us/products/2802329>



Component plug, with universal diode, to connect 2-pos. components into the basic terminal block, height: 19 mm, color: Gray

ST-B250C1500 - Component connector

2802345

<https://www.phoenixcontact.com/us/products/2802345>



Component plug, with bridge rectifier B 250 C 1500, for 4-pos. components, reverse voltage: 600 V, nominal voltage: 250 V, nominal current: 1.5 A, two basic terminal blocks are required per plug, height: 19 mm, color: gray

MBK 5/E-TG - Disconnect terminal block

1415089

<https://www.phoenixcontact.com/us/products/1415089>



ST-SI-UK 4 - Fuse plug

0921011

<https://www.phoenixcontact.com/us/products/0921011>



Fuse plug, nominal current: 250 V, nominal current: 6.3 A, connection method: Plug-in connection, length: 33.1 mm, width: 6.1 mm, height: 33.1 mm, color: black

ST-SILED 12-UK 4 - Fuse plug

0921024

<https://www.phoenixcontact.com/us/products/0921024>



Fuse plug, nominal current: 12 V, nominal current: 6.3 A, connection method: Plug-in connection, length: 33.1 mm, width: 6.1 mm, height: 33.1 mm, color: black

MBK 5/E-TG - Disconnect terminal block

1415089

<https://www.phoenixcontact.com/us/products/1415089>



ST-SILED 24-UK 4 - Fuse plug

0921037

<https://www.phoenixcontact.com/us/products/0921037>



Fuse plug, nominal current: 24 V, nominal current: 6.3 A, connection method: Plug-in connection, length: 33.1 mm, width: 6.1 mm, height: 33.1 mm, color: black

ST-SILED 60-UK 4 - Fuse plug

0921040

<https://www.phoenixcontact.com/us/products/0921040>



Fuse plug, nominal current: 60 V, nominal current: 6.3 A, connection method: Plug-in connection, length: 33.1 mm, width: 6.1 mm, height: 33.1 mm, color: black

MBK 5/E-TG - Disconnect terminal block

1415089

<https://www.phoenixcontact.com/us/products/1415089>



ST-SILA250-UK 4 - Fuse plug

0921053

<https://www.phoenixcontact.com/us/products/0921053>



Fuse plug, nominal current: 250 V, nominal current: 6.3 A, connection method: Plug-in connection, length: 33.1 mm, width: 6.1 mm, height: 33.1 mm, color: black

ST-BE-VP - Component connector

2802332

<https://www.phoenixcontact.com/us/products/2802332>



Component plug, for 4-pos. components, two basic terminal blocks required per plug, 19 mm high

MBK 5/E-TG - Disconnect terminal block

1415089

<https://www.phoenixcontact.com/us/products/1415089>



NS 15 UNPERF 2000MM VPE 10 - DIN rail, unperforated

1401695

<https://www.phoenixcontact.com/us/products/1401695>



DIN rail, unperforated, acc. to EN 60715, material: Steel, galvanized, passivated with a thick layer, Standard profile, color: silver, Pack of 10 (20 m)

NS 15 PERF 2000MM VPE 10 - DIN rail perforated

1401682

<https://www.phoenixcontact.com/us/products/1401682>



DIN rail perforated, acc. to EN 60715, material: Steel, galvanized, passivated with a thick layer, Standard profile, color: silver, Pack of 10 (20 m)

MBK 5/E-TG - Disconnect terminal block

1415089

<https://www.phoenixcontact.com/us/products/1415089>



NS 15 AL PERF 2000MM VPE 10 - DIN rail perforated

1401763

<https://www.phoenixcontact.com/us/products/1401763>



DIN rail perforated, acc. to EN 60715, material: Aluminum, uncoated, Standard profile, color: silver, Pack of 10 (20 m)

NS 15 WH PERF 2000MM-VPE 10 - DIN rail perforated

1204096

<https://www.phoenixcontact.com/us/products/1204096>



DIN rail perforated, acc. to EN 60715, material: Steel, Galvanized, white passivated, Standard profile, color: silver, Pack of 10 (20 m)

MBK 5/E-TG - Disconnect terminal block

1415089

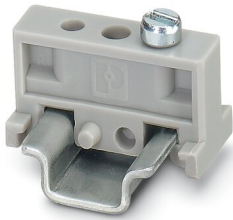
<https://www.phoenixcontact.com/us/products/1415089>



E/MBK - End clamp

1401637

<https://www.phoenixcontact.com/us/products/1401637>



End clamp, width: 6.2 mm, color: gray

E/MK - End clamp

1421633

<https://www.phoenixcontact.com/us/products/1421633>



End clamp, width: 6.2 mm, color: gray

MBK 5/E-TG - Disconnect terminal block

1415089

<https://www.phoenixcontact.com/us/products/1415089>

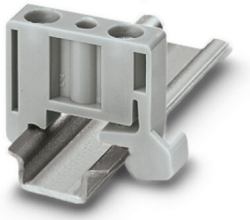


E/MK 1 - End clamp

1421659

<https://www.phoenixcontact.com/us/products/1421659>

End clamp width: 6 mm, color: gray



Phoenix Contact 2023 © - all rights reserved

<https://www.phoenixcontact.com>

Phoenix Contact USA
586 Fulling Mill Road
Middletown, PA 17057, United States
(+717) 944-1300
info@phoenixcon.com