

MBK 5/E - Mini feed-through terminal block



1415076

<https://www.phoenixcontact.com/us/products/1415076>

Please be informed that the data shown in this PDF document is generated from our online catalog. Please find the complete data in the user documentation. Our general terms of use for downloads are valid.



Mini feed-through terminal block, nom. voltage: 500 V, nominal current: 32 A, number of connections: 2, connection method: Screw connection, 1 level, cross section: 0.2 mm² - 4 mm², mounting type: NS 15, color: gray

Your advantages

- Space saving thanks to compact design and mounting option on a 15 mm DIN rail
- Clear arrangement thanks to marking of all terminal points
- Easy potential distribution thanks to standardized plug-in bridges

Commercial data

Item number	1415076
Packing unit	1 pc
Minimum order quantity	50 pc
Sales key	BE12
Product key	BE1261
Catalog page	Page 125 (CL-2002)
GTIN	4017918021368
Weight per piece (including packing)	7.78 g
Weight per piece (excluding packing)	7.42 g
Customs tariff number	85369010
Country of origin	PL

MBK 5/E - Mini feed-through terminal block



1415076

<https://www.phoenixcontact.com/us/products/1415076>

Technical data

Product properties

Product type	Miniature terminal block
Number of connections	2
Number of rows	1

Insulation characteristics

Overvoltage category	III
Degree of pollution	3

Electrical properties

Rated surge voltage	6 kV
Maximum power dissipation for nominal condition	0 W

Connection data

Number of connections per level	2
---------------------------------	---

1 level

Screw thread	M3
Tightening torque	0.6 ... 0.8 Nm
Stripping length	8 mm
Internal cylindrical gage	A4
Connection in acc. with standard	IEC 60947-7-1
Conductor cross section rigid	0.2 mm ² ... 4 mm ²
Cross section AWG	24 ... 12 (converted acc. to IEC)
Conductor cross section flexible	0.2 mm ² ... 4 mm ²
Conductor cross section, flexible [AWG]	24 ... 12 (converted acc. to IEC)
Conductor cross-section flexible (ferrule without plastic sleeve)	0.25 mm ² ... 4 mm ²
Flexible conductor cross section (ferrule with plastic sleeve)	0.25 mm ² ... 2.5 mm ²
2 conductors with same cross section, solid	0.2 mm ² ... 1.5 mm ²
2 conductors with same cross section, flexible	0.2 mm ² ... 1.5 mm ²
2 conductors with same cross section, flexible, with ferrule without plastic sleeve	0.25 mm ² ... 1.5 mm ²
2 conductors with the same cross section, flexible, with TWIN ferrule with plastic sleeve	0.5 mm ² ... 2.5 mm ²
Nominal current	32 A
Maximum load current	32 A (with 4 mm ² conductor cross section)
Nominal voltage	500 V

Dimensions

Width	6.2 mm
End cover width	1 mm

Material specifications

MBK 5/E - Mini feed-through terminal block



1415076

<https://www.phoenixcontact.com/us/products/1415076>

Color	gray
Flammability rating according to UL 94	V0
Insulating material group	I
Insulating material	PA
Static insulating material application in cold	-60 °C
Temperature index of insulation material (DIN EN 60216-1 (VDE 0304-21))	125 °C
Relative insulation material temperature index (Elec., UL 746 B)	130 °C
Fire protection for rail vehicles (DIN EN 45545-2) R22	HL 1 - HL 3
Fire protection for rail vehicles (DIN EN 45545-2) R23	HL 1 - HL 3
Fire protection for rail vehicles (DIN EN 45545-2) R24	HL 1 - HL 3
Fire protection for rail vehicles (DIN EN 45545-2) R26	HL 1 - HL 3
Calorimetric heat release NFPA 130 (ASTM E 1354)	27,5 MJ/kg
Surface flammability NFPA 130 (ASTM E 162)	passed
Specific optical density of smoke NFPA 130 (ASTM E 662)	passed
Smoke gas toxicity NFPA 130 (SMP 800C)	passed

Electrical tests

Surge voltage test

Test voltage setpoint	7.3 kV
Result	Test passed

Temperature-rise test

Requirement temperature-rise test	Increase in temperature ≤ 45 K
Result	Test passed
Short-time withstand current 4 mm ²	0.48 kA
Result	Test passed

Power-frequency withstand voltage

Test voltage setpoint	1.89 kV
Result	Test passed

Mechanical properties

Mechanical data

Open side panel	Yes
-----------------	-----

Mechanical tests

Mechanical strength

Result	Test passed
--------	-------------

Attachment on the carrier

DIN rail/fixing support	NS 15
Test force setpoint	1 N
Result	Test passed

MBK 5/E - Mini feed-through terminal block



1415076

<https://www.phoenixcontact.com/us/products/1415076>

Test for conductor damage and slackening

Rotation speed	10 rpm
Revolutions	135
Conductor cross section/weight	0.2 mm ² / 0.2 kg
	4 mm ² / 0.9 kg
Result	Test passed

Environmental and real-life conditions

Needle-flame test

Time of exposure	30 s
Result	Test passed

Ambient conditions

Ambient temperature (storage/transport)	-25 °C ... 60 °C (for a short time, not exceeding 24 h, -60 °C to +70 °C)
Ambient temperature (assembly)	-5 °C ... 70 °C
Ambient temperature (actuation)	-5 °C ... 70 °C
Permissible humidity (storage/transport)	30 % ... 70 %

Standards and regulations

Connection in acc. with standard	IEC 60947-7-1
----------------------------------	---------------

Mounting

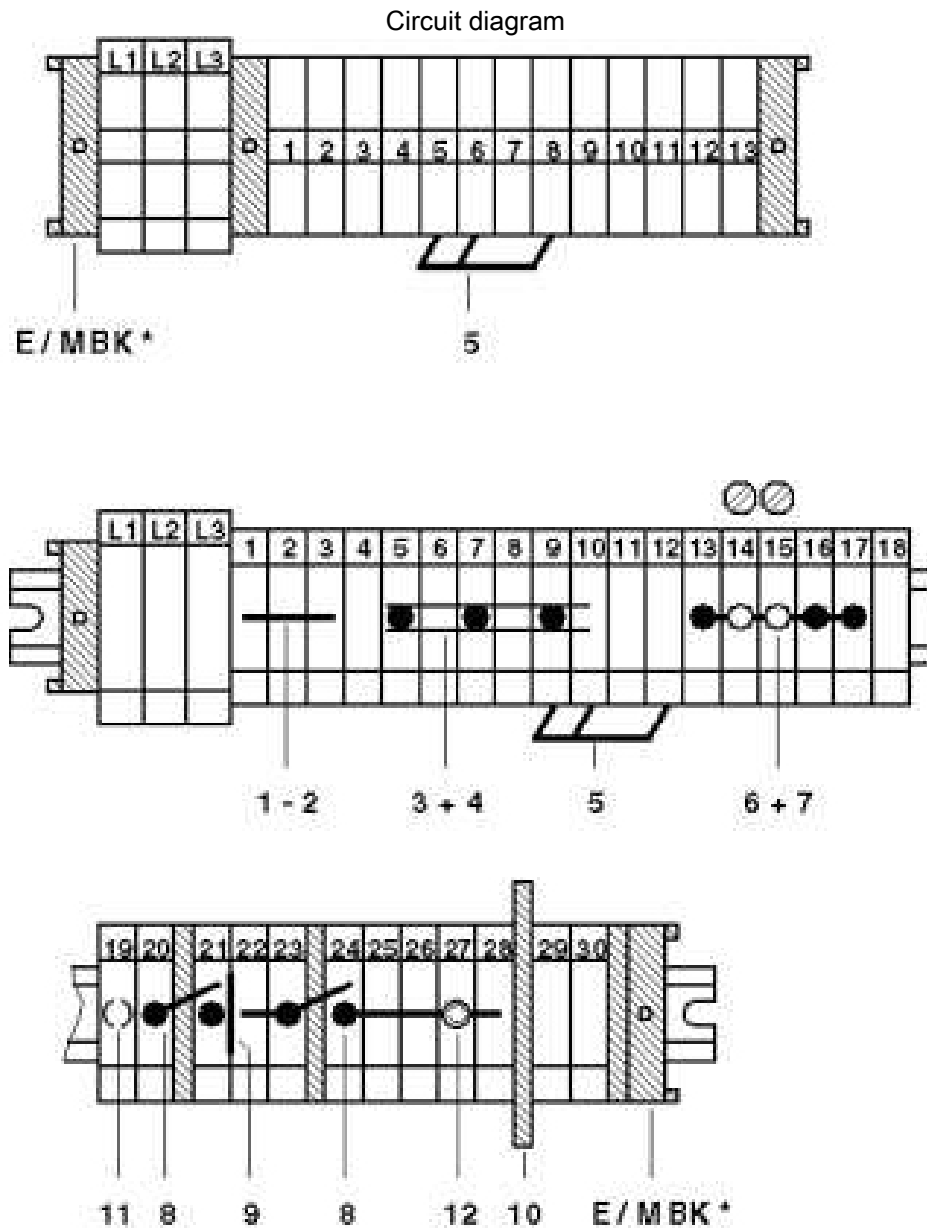
Mounting type	NS 15
---------------	-------

MBK 5/E - Mini feed-through terminal block

1415076

<https://www.phoenixcontact.com/us/products/1415076>

Drawings



MBK 5/E - Mini feed-through terminal block



1415076

<https://www.phoenixcontact.com/us/products/1415076>

Approvals

To download certificates, visit the product detail page: <https://www.phoenixcontact.com/us/products/1415076>

DNV

Approval ID: TAE00001CT



CSA

Approval ID: 13631



EAC

Approval ID: RU C-DE.AI30.B.01102



cULus Recognized

Approval ID: E60425

	Nominal voltage U_N	Nominal current I_N	Cross section AWG	Cross section mm^2
Use group B	600 V	30 A	26 - 10	-
Use group C	600 V	30 A	26 - 10	-



EAC

Approval ID: RU C-DE.BL08.B.00534

MBK 5/E - Mini feed-through terminal block



1415076

<https://www.phoenixcontact.com/us/products/1415076>

Classifications

ECLASS

ECLASS-11.0	27141120
ECLASS-13.0	27250101

ETIM

ETIM 8.0	EC000897
----------	----------

UNSPSC

UNSPSC 21.0	39121400
-------------	----------

MBK 5/E - Mini feed-through terminal block



1415076

<https://www.phoenixcontact.com/us/products/1415076>

Environmental product compliance

China RoHS	Environmentally friendly use period: unlimited = EFUP-e
	No hazardous substances above threshold values

MBK 5/E - Mini feed-through terminal block



1415076

<https://www.phoenixcontact.com/us/products/1415076>

Accessories



Note: Applying some accessories below might limit this product.

IS-K 4 - Bridge bar isolator

1302338

<https://www.phoenixcontact.com/us/products/1302338>



Bridge bar isolator, color: gray

ISSBI 10- 6 - Bridge

0301505

<https://www.phoenixcontact.com/us/products/0301505>



Bridge, pitch: 6 mm, number of positions: 10, color: silver



Max. current carrying capacity: 22 A

MBK 5/E - Mini feed-through terminal block



1415076

<https://www.phoenixcontact.com/us/products/1415076>


FBI 100- 6 - Fixed bridge

0201650

<https://www.phoenixcontact.com/us/products/0201650>

Fixed bridge, pitch: 6.2 mm, number of positions: 100, color: silver



 Max. current carrying capacity: 28 A


FBI 10- 6 - Fixed bridge

0203250

<https://www.phoenixcontact.com/us/products/0203250>

Fixed bridge, pitch: 6.2 mm, number of positions: 10, color: silver



 Max. current carrying capacity: 28 A

MBK 5/E - Mini feed-through terminal block

1415076

<https://www.phoenixcontact.com/us/products/1415076>




FBI 20- 6 - Fixed bridge

0201867

<https://www.phoenixcontact.com/us/products/0201867>

Fixed bridge, pitch: 6.2 mm, number of positions: 20, color: silver



 Max. current carrying capacity: 28 A

EB 3- 6 - Insertion bridge

0201142

<https://www.phoenixcontact.com/us/products/0201142>

Insertion bridge, pitch: 6.2 mm, number of positions: 3, color: gray



 Max. current carrying capacity: 26 A

MBK 5/E - Mini feed-through terminal block



1415076

<https://www.phoenixcontact.com/us/products/1415076>


EB 2- 6 - Insertion bridge

0201155

<https://www.phoenixcontact.com/us/products/0201155>

Insertion bridge, pitch: 6.2 mm, number of positions: 2, color: gray



 Max. current carrying capacity: 26 A


EB 10- 6 - Insertion bridge

0201139

<https://www.phoenixcontact.com/us/products/0201139>

Insertion bridge, pitch: 6.2 mm, number of positions: 10, color: gray



 Max. current carrying capacity: 26 A

MBK 5/E - Mini feed-through terminal block

1415076

<https://www.phoenixcontact.com/us/products/1415076>




SBRN 2-9 - Switching jumper

1415238

<https://www.phoenixcontact.com/us/products/1415238>



Switching bridge, 2-pos.

 Max. current carrying capacity: 24 A


SBRN 2-7 - Switching jumper

1413230

<https://www.phoenixcontact.com/us/products/1413230>



Switching jumper, pitch: 7 mm, number of positions: 2, color: silver

 Max. current carrying capacity: 24 A

MBK 5/E - Mini feed-through terminal block

1415076

<https://www.phoenixcontact.com/us/products/1415076>



D-MBK/E - End cover

1415021

<https://www.phoenixcontact.com/us/products/1415021>



End cover, length: 28 mm, width: 1 mm, height: 26.2 mm, color: gray

FB-150 METER - Fixed bridge

0201595

<https://www.phoenixcontact.com/us/products/0201595>



Cross connection rail, for fixed bridging of identical inputs and outputs, made of Cu, nickel-plated, 1 m long

MBK 5/E - Mini feed-through terminal block

1415076

<https://www.phoenixcontact.com/us/products/1415076>



RPS - Reducing plug

0201647

<https://www.phoenixcontact.com/us/products/0201647>

Reducing plug, number of positions: 1, color: gray



TS-KK 3 - Separating plate

2770215

<https://www.phoenixcontact.com/us/products/2770215>

Separating plate, length: 14 mm, width: 0.5 mm, height: 14 mm, color: gray



MBK 5/E - Mini feed-through terminal block

1415076

<https://www.phoenixcontact.com/us/products/1415076>



ATP-MBK - Partition plate

1413227

<https://www.phoenixcontact.com/us/products/1413227>



Partition plate, length: 42.5 mm, width: 2.5 mm, height: 42.5 mm, color: gray

BN-ZB 6,2/WH CUS - Marker pin Zack strip

0824276

<https://www.phoenixcontact.com/us/products/0824276>



Marker pin Zack strip, can be ordered: Strip, white, labeled according to customer specifications, mounting type: plug in, for terminal block width: 6.2 mm, lettering field size: 4 x 4 mm

MBK 5/E - Mini feed-through terminal block

1415076

<https://www.phoenixcontact.com/us/products/1415076>



SF-SL 0,6X3,5-100 S-VDE - Screwdriver

1212587

<https://www.phoenixcontact.com/us/products/1212587>



Actuation tool, for ST terminal blocks, VDE insulated, with slimmer insulation integrated in the blade, also suitable for use as a bladed screwdriver, size: 0.6 x 3.5 x 100 mm, 2-component grip, with non-slip grip

NS 15 UNPERF 2000MM VPE 10 - DIN rail, unperforated

1401695

<https://www.phoenixcontact.com/us/products/1401695>



DIN rail, unperforated, acc. to EN 60715, material: Steel, galvanized, passivated with a thick layer, Standard profile, color: silver, Pack of 10 (20 m)

MBK 5/E - Mini feed-through terminal block

1415076

<https://www.phoenixcontact.com/us/products/1415076>



NS 15 PERF 2000MM VPE 10 - DIN rail perforated

1401682

<https://www.phoenixcontact.com/us/products/1401682>



DIN rail perforated, acc. to EN 60715, material: Steel, galvanized, passivated with a thick layer, Standard profile, color: silver, Pack of 10 (20 m)

NS 15 AL PERF 2000MM VPE 10 - DIN rail perforated

1401763

<https://www.phoenixcontact.com/us/products/1401763>



DIN rail perforated, acc. to EN 60715, material: Aluminum, uncoated, Standard profile, color: silver, Pack of 10 (20 m)

MBK 5/E - Mini feed-through terminal block

1415076

<https://www.phoenixcontact.com/us/products/1415076>



NS 15 WH PERF 2000MM-VPE 10 - DIN rail perforated

1204096

<https://www.phoenixcontact.com/us/products/1204096>

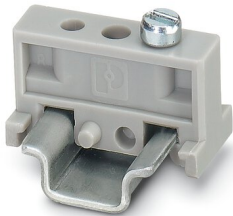


DIN rail perforated, acc. to EN 60715, material: Steel, Galvanized, white passivated, Standard profile, color: silver, Pack of 10 (20 m)

E/MBK - End clamp

1401637

<https://www.phoenixcontact.com/us/products/1401637>



End clamp, width: 6.2 mm, color: gray

MBK 5/E - Mini feed-through terminal block

1415076

<https://www.phoenixcontact.com/us/products/1415076>



E/MK - End clamp

1421633

<https://www.phoenixcontact.com/us/products/1421633>

End clamp, width: 6.2 mm, color: gray

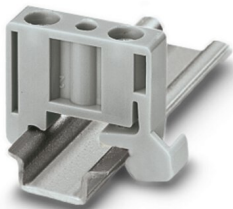


E/MK 1 - End clamp

1421659

<https://www.phoenixcontact.com/us/products/1421659>

End clamp width: 6 mm, color: gray



MBK 5/E - Mini feed-through terminal block

1415076

<https://www.phoenixcontact.com/us/products/1415076>



PSBJ 3/13/4 - Female test connector

0201304

<https://www.phoenixcontact.com/us/products/0201304>

Female test connector, number of positions: 1, color: silver



PSB 3/10/4 - Female test connector

0601292

<https://www.phoenixcontact.com/us/products/0601292>

Female test connector, number of positions: 1, color: silver



Phoenix Contact 2023 © - all rights reserved
<https://www.phoenixcontact.com>

Phoenix Contact USA
586 Fulling Mill Road
Middletown, PA 17057, United States
(+717) 944-1300
info@phoenixcon.com