

HC-B 6-TFL-N-O1PG16S - Housing

1460349

<https://www.phoenixcontact.com/us/products/1460349>



Please be informed that the data shown in this PDF document is generated from our online catalog. Please find the complete data in the user documentation. Our general terms of use for downloads are valid.



HEAVYCON B6 sleeve housing, for single locking latch, height: 56 mm, with 1 x Pg16 gland, lateral cable outlet

Commercial data

Item number	1460349
Packing unit	1 pc
Minimum order quantity	10 pc
Note	Made to order (non-returnable)
Sales key	BF55
Product key	BF7AAC
Catalog page	Page 486 (C-4-2013)
GTIN	4046356695244
Weight per piece (including packing)	137.3 g
Weight per piece (excluding packing)	137.3 g
Customs tariff number	85389099
Country of origin	DE

HC-B 6-TFL-N-O1PG16S - Housing

1460349

<https://www.phoenixcontact.com/us/products/1460349>



Technical data

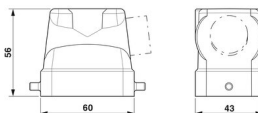
Notes

General	For contact inserts HC-B6, BB10, DD24, M
---------	--

Product properties

Type	B6
Product type	Housing with locking latch
Application	Standard
No. of cable outlets	1
Type of the screw connection	1x Pg16
Housing type	Sleeve housing
Shielded	no
Cable outlet	lateral
Pg screw connection	none

Dimensions

Dimensional drawing	
Width	43 mm
Height	56 mm
Length	60 mm

Material specifications

Housing surface material	Powder-coated, gray
Housing material	die-cast aluminum

Mechanical properties

Mechanical data

Type of the screw connection	1x Pg16
Locking type	Pin

Environmental and real-life conditions

Ambient conditions

Degree of protection	IP65
Ambient temperature (operation)	-40 °C ... 125 °C

HC-B 6-TFL-N-O1PG16S - Housing

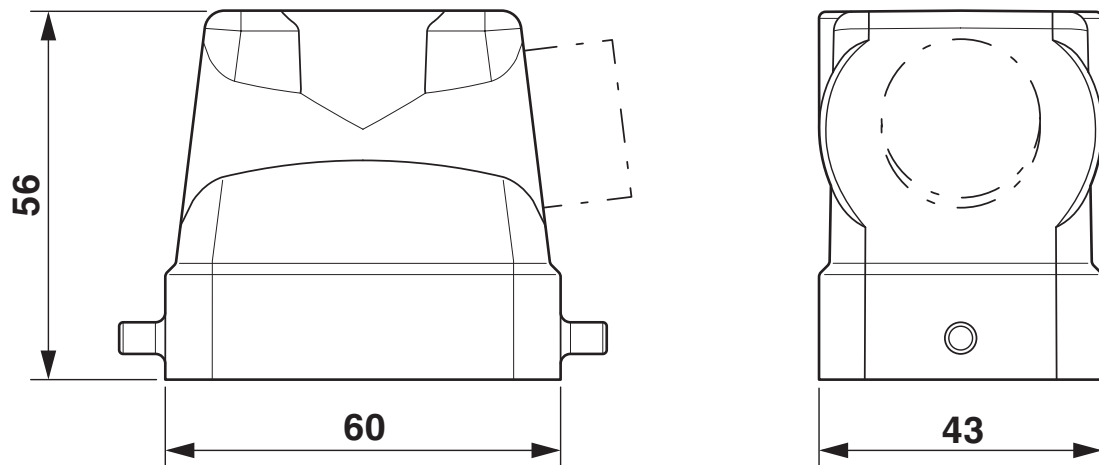
1460349

<https://www.phoenixcontact.com/us/products/1460349>



Drawings

Dimensional drawing



Dimensional drawing

HC-B 6-TFL-N-O1PG16S - Housing



1460349

<https://www.phoenixcontact.com/us/products/1460349>

Classifications

ECLASS

ECLASS-11.0	27440202
ECLASS-13.0	27440202

ETIM

ETIM 7.0	EC000437
----------	----------

UNSPSC

UNSPSC 21.0	31261501
-------------	----------

HC-B 6-TFL-N-O1PG16S - Housing



1460349

<https://www.phoenixcontact.com/us/products/1460349>

Environmental product compliance

China RoHS	Environmentally friendly use period: unlimited = EFUP-e
	No hazardous substances above threshold values

HC-B 6-TFL-N-O1PG16S - Housing

1460349

<https://www.phoenixcontact.com/us/products/1460349>



Accessories

G-INS-PG16-S68N-PNES-GY - Cable gland

1411144

<https://www.phoenixcontact.com/us/products/1411144>



Cable gland, material for screw connection: PA, external cable diameter 10 mm .
.. 14 mm, shielding: no, connecting thread: Pg16, color: silver-grey RAL 7001

G-INS-PG16-S68N-NNES-S - Cable gland

1411174

<https://www.phoenixcontact.com/us/products/1411174>



Cable gland, material for screw connection: Brass, nickel-plated, external cable
diameter 10 mm ... 14 mm, shielding: no, connecting thread: Pg16, color: silver,
with O-ring

HC-B 6-TFL-N-O1PG16S - Housing

1460349

<https://www.phoenixcontact.com/us/products/1460349>



G-INSEC-PG16-S68N-NNES-S - Cable gland

1411199

<https://www.phoenixcontact.com/us/products/1411199>



Cable gland, material for screw connection: Brass, nickel-plated, external cable diameter 10 mm ... 14 mm, shielding: yes, connecting thread: Pg16, color: silver, with O-ring

HC-BS-PG16 - Screw plug

1674516

<https://www.phoenixcontact.com/us/products/1674516>



Screw plug, material for screw connection: Brass, nickel-plated, connecting thread: Pg16, color: silver

Phoenix Contact 2023 © - all rights reserved
<https://www.phoenixcontact.com>

Phoenix Contact USA
586 Fulling Mill Road
Middletown, PA 17057, United States
(+717) 944-1300
info@phoenixcon.com