

PT 6-T P/P HV GY/BK - Disconnect terminal block



1326583

<https://www.phoenixcontact.com/us/products/1326583>

Please be informed that the data shown in this PDF document is generated from our online catalog. Please find the complete data in the user documentation. Our general terms of use for downloads are valid.



Disconnect terminal block, nom. voltage: 1000 V, nominal current: 32 A, connection method: Push-in connection, Rated cross section: 6 mm², cross section: 0.5 mm² - 10 mm², mounting: NS 35/7,5, NS 35/15, NS 32, color: gray/black

Your advantages

- In addition to the testing facility in the double function shaft, all terminal blocks provide an additional test connection
- The compact design and front connection enable wiring in a confined space

- The Push-in connection terminal blocks are characterized by the system features of the CLIPLINE complete system and by easy and tool-free wiring of conductors with ferrules or solid conductors

Commercial data

Item number	1326583
Packing unit	1 pc
Minimum order quantity	50 pc
Sales key	BE22
Product key	BE2231
GTIN	4063151618476
Weight per piece (including packing)	34.222 g
Weight per piece (excluding packing)	34.222 g
Customs tariff number	85369010
Country of origin	CN

PT 6-T P/P HV GY/BK - Disconnect terminal block



1326583

<https://www.phoenixcontact.com/us/products/1326583>

Technical data

Notes

General

Note	With a free-hanging connection, the user has to take care that the required distances to electrically conductive surfaces are complied with.
	Nominal current and maximum load current see derating curve.

Product properties

Product type	Disconnect terminal block
Number of connections	2
Number of rows	1
Potentials	1

Insulation characteristics

Overvoltage category	III
Degree of pollution	3

Electrical properties

Rated surge voltage	8 kV
Maximum power dissipation for nominal condition	1.31 W

Connection data

Number of connections per level	2
Nominal cross section	6 mm ²
Stripping length	10 mm ... 12 mm
Internal cylindrical gage	A5 B5
Connection in acc. with standard	IEC 60947-7-1
Conductor cross section rigid	0.5 mm ² ... 10 mm ²
Cross section AWG	20 ... 8 (converted acc. to IEC)
Conductor cross section flexible	0.5 mm ² ... 10 mm ²
Conductor cross section, flexible [AWG]	20 ... 8 (converted acc. to IEC)
Conductor cross-section flexible (ferrule without plastic sleeve)	0.5 mm ² ... 10 mm ²
Flexible conductor cross section (ferrule with plastic sleeve)	0.5 mm ² ... 10 mm ²
2 conductors with the same cross section, flexible, with TWIN ferrule with plastic sleeve	0.5 mm ² ... 1.5 mm ² When using TWIN ferrules, we recommend a minimum ferrule length of 13 mm.
Nominal current	32 A
Maximum load current	32 A (with 10 mm ² conductor cross section, rigid)
Nominal voltage	1000 V
Nominal cross section	6 mm ²

Connection cross sections directly pluggable

Conductor cross section rigid	1 mm ² ... 10 mm ²
-------------------------------	--

PT 6-T P/P HV GY/BK - Disconnect terminal block



1326583

<https://www.phoenixcontact.com/us/products/1326583>

Conductor cross-section flexible (ferrule without plastic sleeve)	1.5 mm ² ... 6 mm ²
Flexible conductor cross section (ferrule with plastic sleeve)	1.5 mm ² ... 6 mm ²

Dimensions

Width	10.2 mm
Height	91 mm
Depth	63.1 mm
Depth on NS 32	69.3 mm
Depth on NS 35/7,5	64.3 mm
Depth on NS 35/15	71.8 mm

Material specifications

Color	gray/black
Flammability rating according to UL 94	V0
Insulating material group	I
Insulating material	PA
Static insulating material application in cold	-60 °C
Relative insulation material temperature index (Elec., UL 746 B)	130 °C
Fire protection for rail vehicles (DIN EN 45545-2) R22	HL 1 - HL 3
Fire protection for rail vehicles (DIN EN 45545-2) R23	HL 1 - HL 3
Fire protection for rail vehicles (DIN EN 45545-2) R24	HL 1 - HL 3
Fire protection for rail vehicles (DIN EN 45545-2) R26	HL 1 - HL 3
Calorimetric heat release NFPA 130 (ASTM E 1354)	28 MJ/kg
Surface flammability NFPA 130 (ASTM E 162)	passed
Specific optical density of smoke NFPA 130 (ASTM E 662)	passed
Smoke gas toxicity NFPA 130 (SMP 800C)	passed

Electrical tests

Surge voltage test

Test voltage setpoint	9.8 kV
Result	Test passed

Temperature-rise test

Requirement temperature-rise test	Increase in temperature ≤ 45 K
Result	Test passed
Short-time withstand current 4 mm ²	0.48 kA
Result	Test passed

Power-frequency withstand voltage

Test voltage setpoint	2.2 kV
Result	Test passed

Mechanical properties

Mechanical data

PT 6-T P/P HV GY/BK - Disconnect terminal block



1326583

<https://www.phoenixcontact.com/us/products/1326583>

Open side panel	No
-----------------	----

Mechanical tests

Mechanical strength

Result	Test passed
--------	-------------

Attachment on the carrier

DIN rail/fixing support	NS 32/NS 35
Test force setpoint	5 N
Result	Test passed

Test for conductor damage and slackening

Rotation speed	10 rpm
Revolutions	135
Conductor cross section/weight	0.5 mm ² / 0.3 kg
	6 mm ² / 1.4 kg
	10 mm ² / 2 kg
Result	Test passed

Environmental and real-life conditions

Aging

Temperature cycles	192
Result	Test passed

Needle-flame test

Time of exposure	30 s
Result	Test passed

Oscillation/broadband noise

Specification	DIN EN 50155 (VDE 0115-200):2018-05
	DIN EN 50125-3 (VDE 0115-108-3):2003-10
Spectrum	Service life test category 2, bogie-mounted
	On ballast
Frequency	$f_1 = 5 \text{ Hz}$ to $f_2 = 250 \text{ Hz}$
	5 - 2000 Hz
ASD level	6.12 (m/s ²) ² /Hz
Acceleration	3.12g
	10 m/s ²
Test duration per axis	5 h
	5 h
Test directions	X-, Y- and Z-axis
	X-, Y- and Z-axis
Result	Test passed
	Test passed

PT 6-T P/P HV GY/BK - Disconnect terminal block



1326583

<https://www.phoenixcontact.com/us/products/1326583>

Shocks

Specification	DIN EN 50155 (VDE 0115-200):2018-05
	DIN EN 50125-3 (VDE 0115-108-3):2003-10
Pulse shape	Half-sine
Acceleration	30g
	50 m/s ²
Shock duration	18 ms
	11 ms
Number of shocks per direction	3
	3
Test directions	X-, Y- and Z-axis (pos. and neg.)
	X-, Y- and Z-axis (pos. and neg.)
Result	Test passed
	Test passed

Ambient conditions

Ambient temperature (operation)	-60 °C ... 105 °C (max. short-term operating temperature RTI Elec.)
Ambient temperature (storage/transport)	-25 °C ... 60 °C (for a short time, not exceeding 24 h, -60 °C to +70 °C)
Ambient temperature (assembly)	-5 °C ... 70 °C
Ambient temperature (actuation)	-5 °C ... 70 °C
Permissible humidity (storage/transport)	30 % ... 70 %

Standards and regulations

Connection in acc. with standard	IEC 60947-7-1
----------------------------------	---------------

Mounting

Mounting type	NS 35/7,5
	NS 35/15
	NS 32

PT 6-T P/P HV GY/BK - Disconnect terminal block



1326583

<https://www.phoenixcontact.com/us/products/1326583>

Drawings

Circuit diagram



PT 6-T P/P HV GY/BK - Disconnect terminal block




1326583


<https://www.phoenixcontact.com/us/products/1326583>


Approvals


To download certificates, visit the product detail page: <https://www.phoenixcontact.com/us/products/1326583>

 CSA Approval ID: 13631				
	Nominal voltage U_N	Nominal current I_N	Cross section AWG	Cross section mm^2
Use group B	600 V	30 A	20 - 10	-
Use group C	600 V	30 A	20 - 10	-
Use group D	600 V	5 A	20 - 10	-

 EAC Approval ID: RU C-DE.BL08.B.00644				
---	--	--	--	--

 cULus Recognized Approval ID: E60425				
--	--	--	--	--

 cULus Recognized Approval ID: E60425				
--	--	--	--	--

 cULus Recognized Approval ID: E60425				
--	--	--	--	--

PT 6-T P/P HV GY/BK - Disconnect terminal block



1326583

<https://www.phoenixcontact.com/us/products/1326583>

Classifications

ECLASS

ECLASS-11.0	27141126
ECLASS-12.0	27141126
ECLASS-13.0	27250108

ETIM

ETIM 8.0	EC000902
----------	----------

UNSPSC

UNSPSC 21.0	39121400
-------------	----------

PT 6-T P/P HV GY/BK - Disconnect terminal block



1326583

<https://www.phoenixcontact.com/us/products/1326583>

Accessories

i Note: Applying some accessories below might limit this product.

FBS 2-10 - Plug-in bridge

3005947

<https://www.phoenixcontact.com/us/products/3005947>



Plug-in bridge, pitch: 10.2 mm, number of positions: 2, color: red

i Max. current carrying capacity: 32 A

FBS 5-10 - Plug-in bridge

3005948

<https://www.phoenixcontact.com/us/products/3005948>



Plug-in bridge, pitch: 10.2 mm, number of positions: 5, color: red

i Max. current carrying capacity: 32 A

PT 6-T P/P HV GY/BK - Disconnect terminal block

1326583

<https://www.phoenixcontact.com/us/products/1326583>




FBS 5-10 BU - Plug-in bridge

1040620

<https://www.phoenixcontact.com/us/products/1040620>



Plug-in bridge, pitch: 10.2 mm, number of positions: 5, color: blue

 Max. current carrying capacity: 32 A

PT-IL - Mounting material

3208090

<https://www.phoenixcontact.com/us/products/3208090>

Operating decal for the push-in Technology



PT 6-T P/P HV GY/BK - Disconnect terminal block



1326583

<https://www.phoenixcontact.com/us/products/1326583>

PPO-10/P - Pick-off terminal

1147119

<https://www.phoenixcontact.com/us/products/1147119>



Pick-off terminal, nom. voltage: 1000 V, nominal current: 32 A, number of connections: 2, connection method: Push-in connection, Rated cross section: 6 mm², cross section: 0.5 mm² - 10 mm², mounting type: Plug-in mounting, color: gray

PPO-10/P OG - Pick-off terminal

1152030

<https://www.phoenixcontact.com/us/products/1152030>



Pick-off terminal, nom. voltage: 1000 V, nominal current: 32 A, number of connections: 2, connection method: Push-in connection, 1 level, Rated cross section: 6 mm², cross section: 0.5 mm² - 10 mm², mounting type: Plug-in mounting, color: orange

PT 6-T P/P HV GY/BK - Disconnect terminal block



1326583

<https://www.phoenixcontact.com/us/products/1326583>

P-DI-MP HV YE - Isolating plugs

1322572

<https://www.phoenixcontact.com/us/products/1322572>

Isolating plugs, length: 22.4 mm, width: 6.3 mm, height: 22.4 mm, color: yellow



P-DI-MP HV RD - Isolating plugs

1322573

<https://www.phoenixcontact.com/us/products/1322573>

Isolating plugs, length: 22.4 mm, width: 6.3 mm, height: 22.4 mm, color: red



PT 6-T P/P HV GY/BK - Disconnect terminal block



1326583

<https://www.phoenixcontact.com/us/products/1326583>

P-DI-MP HV WH - Isolating plugs

1322576

<https://www.phoenixcontact.com/us/products/1322576>



Isolating plugs, length: 22.4 mm, width: 6.3 mm, height: 22.4 mm, color: white

P-DI-MP HV OG - Isolating plugs

1340254

<https://www.phoenixcontact.com/us/products/1340254>



Isolating plugs, length: 22.4 mm, width: 6.3 mm, height: 22.4 mm, color: orange

PT 6-T P/P HV GY/BK - Disconnect terminal block

1326583

<https://www.phoenixcontact.com/us/products/1326583>



NS 35/ 7,5 PERF 2000MM - DIN rail perforated

0801733

<https://www.phoenixcontact.com/us/products/0801733>



DIN rail perforated, acc. to EN 60715, material: Steel, galvanized, passivated with a thick layer, Standard profile, color: silver, Pack of 25 (50 m)

NS 35/ 7,5 UNPERF 2000MM - DIN rail, unperforated

0801681

<https://www.phoenixcontact.com/us/products/0801681>



DIN rail, unperforated, acc. to EN 60715, material: Steel, galvanized, passivated with a thick layer, Standard profile, color: silver, Pack of 25 (50 m)

PT 6-T P/P HV GY/BK - Disconnect terminal block

1326583

<https://www.phoenixcontact.com/us/products/1326583>



NS 35/ 7,5 WH PERF 2000MM - DIN rail perforated

1204119

<https://www.phoenixcontact.com/us/products/1204119>



DIN rail perforated, acc. to EN 60715, material: Steel, Galvanized, white passivated, Standard profile, color: silver, Pack of 25 (50 m)

NS 35/ 7,5 WH UNPERF 2000MM-VPE 10 - DIN rail, unperforated

1204122

<https://www.phoenixcontact.com/us/products/1204122>



DIN rail, unperforated, acc. to EN 60715, material: Steel, Galvanized, white passivated, Standard profile, color: silver, Pack of 10 (20 m)

PT 6-T P/P HV GY/BK - Disconnect terminal block

1326583

<https://www.phoenixcontact.com/us/products/1326583>



NS 35/ 7,5 AL UNPERF 2000MM - DIN rail, unperforated

0801704

<https://www.phoenixcontact.com/us/products/0801704>



DIN rail, unperforated, acc. to EN 60715, material: Aluminum, uncoated, Standard profile, color: silver, Pack of 25 (50 m)

NS 35/ 7,5 ZN PERF 2000MM - DIN rail perforated

1206421

<https://www.phoenixcontact.com/us/products/1206421>



DIN rail perforated, acc. to EN 60715, material: Steel, galvanized, Standard profile, color: silver, Pack of 25 (50 m)

PT 6-T P/P HV GY/BK - Disconnect terminal block

1326583

<https://www.phoenixcontact.com/us/products/1326583>



NS 35/ 7,5 ZN UNPERF 2000MM - DIN rail, unperforated

1206434

<https://www.phoenixcontact.com/us/products/1206434>



DIN rail, unperforated, acc. to EN 60715, material: Steel, galvanized, Standard profile, color: silver, Pack of 25 (50 m)

NS 35/ 7,5 CU UNPERF 2000MM-VPE 10 - DIN rail, unperforated

0801762

<https://www.phoenixcontact.com/us/products/0801762>



DIN rail, unperforated, acc. to EN 60715, material: Copper, uncoated, Standard profile, color: copper-colored, Pack of 10 (20 m)

PT 6-T P/P HV GY/BK - Disconnect terminal block

1326583

<https://www.phoenixcontact.com/us/products/1326583>



NS 35/ 7,5 CAP - End cap

1206560

<https://www.phoenixcontact.com/us/products/1206560>

DIN rail end piece, for DIN rail NS 35/7.5



NS 35/15 PERF 2000MM - DIN rail perforated

1201730

<https://www.phoenixcontact.com/us/products/1201730>



DIN rail perforated, similar to EN 60715, material: Steel, galvanized, passivated with a thick layer, Standard profile, color: silver, Pack of 25 (50 m)

PT 6-T P/P HV GY/BK - Disconnect terminal block

1326583

<https://www.phoenixcontact.com/us/products/1326583>



NS 35/15 UNPERF 2000MM - DIN rail, unperforated

1201714

<https://www.phoenixcontact.com/us/products/1201714>



DIN rail, unperforated, similar to EN 60715, material: Steel, galvanized, passivated with a thick layer, Standard profile, color: silver, Pack of 25 (50 m)

NS 35/15 WH PERF 2000MM - DIN rail perforated

0806602

<https://www.phoenixcontact.com/us/products/0806602>



DIN rail perforated, similar to EN 60715, material: Steel, Galvanized, white passivated, Standard profile, color: white, Pack of 25 (50 m)

PT 6-T P/P HV GY/BK - Disconnect terminal block

1326583

<https://www.phoenixcontact.com/us/products/1326583>



NS 35/15 WH UNPERF 2000MM-VPE 10 - DIN rail, unperforated

1204135

<https://www.phoenixcontact.com/us/products/1204135>



DIN rail, unperforated, similar to EN 60715, material: Steel, Galvanized, white passivated, Standard profile, color: silver, Pack of 10 (20 m)

NS 35/15 AL UNPERF 2000MM - DIN rail, unperforated

1201756

<https://www.phoenixcontact.com/us/products/1201756>



DIN rail, unperforated, similar to EN 60715, material: Aluminum, uncoated, Standard profile, color: silver

PT 6-T P/P HV GY/BK - Disconnect terminal block

1326583

<https://www.phoenixcontact.com/us/products/1326583>



NS 35/15 ZN PERF 2000MM - DIN rail perforated

1206599

<https://www.phoenixcontact.com/us/products/1206599>



DIN rail perforated, similar to EN 60715, material: Steel, galvanized, Standard profile, color: silver, Pack of 25 (50 m)

NS 35/15 ZN UNPERF 2000MM - DIN rail, unperforated

1206586

<https://www.phoenixcontact.com/us/products/1206586>



DIN rail, unperforated, similar to EN 60715, material: Steel, galvanized, Standard profile, color: silver, Pack of 25 (50 m)

PT 6-T P/P HV GY/BK - Disconnect terminal block

1326583

<https://www.phoenixcontact.com/us/products/1326583>



NS 35/15 CU UNPERF 2000MM-VPE 10 - DIN rail, unperforated

1201895

<https://www.phoenixcontact.com/us/products/1201895>



DIN rail, unperforated, similar to EN 60715, material: Copper, uncoated, Standard profile, color: copper-colored, Pack of 10 (20 m)

NS 35/15 CAP - End cap

1206573

<https://www.phoenixcontact.com/us/products/1206573>

DIN rail end piece, for DIN rail NS 35/15



PT 6-T P/P HV GY/BK - Disconnect terminal block

1326583

<https://www.phoenixcontact.com/us/products/1326583>



NS 35/15-2,3 UNPERF 2000MM-VPE 10 - DIN rail, unperforated

1201798

<https://www.phoenixcontact.com/us/products/1201798>



DIN rail, unperforated, acc. to EN 60715, material: Steel, galvanized, passivated with a thick layer, Standard profile 2.3 mm, color: silver, Pack of 10 (20 m)

ZBF10:UNBEDRUCKT - Zack Marker strip, flat

0809997

<https://www.phoenixcontact.com/us/products/0809997>



Zack Marker strip, flat, Strip, white, unlabeled, can be labeled with: CMS-P1-PLOTTER, PLOTMARK, mounting type: snapped, for terminal block width: 10 mm, lettering field size: 5.15 x 10 mm, Number of individual labels: 10

PT 6-T P/P HV GY/BK - Disconnect terminal block



1326583

<https://www.phoenixcontact.com/us/products/1326583>

ZBF10 CUS - Zack Marker strip, flat

0825031

<https://www.phoenixcontact.com/us/products/0825031>



Zack Marker strip, flat, can be ordered: Strip, white, labeled according to customer specifications, mounting type: snap into flat marker groove, for terminal block width: 10 mm, lettering field size: 5.15 x 10 mm, Number of individual labels: 10

ZBF10,LGS:FORTL.ZAHLEN - Zack Marker strip, flat

0810009

<https://www.phoenixcontact.com/us/products/0810009>



Zack Marker strip, flat, Strip, white, labeled, printed horizontally: consecutive numbers 1 ... 10, 11 ... 20, etc. up to 91 ... 100, mounting type: snapped, for terminal block width: 10 mm, lettering field size: 5.15 x 10 mm, Number of individual labels: 10

PT 6-T P/P HV GY/BK - Disconnect terminal block



1326583

<https://www.phoenixcontact.com/us/products/1326583>

ZBF10,QR:FORTL.ZAHLEN - Zack Marker strip, flat

0810025

<https://www.phoenixcontact.com/us/products/0810025>



Zack Marker strip, flat, Strip, white, labeled, Printed vertically: consecutive numbers 1 ... 10, 11 ... 20, etc. up to 91 ... 100, mounting type: snapped, for terminal block width: 10 mm, lettering field size: 5.15 x 10 mm, Number of individual labels: 10

UC-TMF 10 - Marker for terminal blocks

0818124

<https://www.phoenixcontact.com/us/products/0818124>



Marker for terminal blocks, Sheet, white, unlabeled, can be labeled with: BLUEMARK ID COLOR, BLUEMARK ID, BLUEMARK CLED, PLOTMARK, CMS-P1-PLOTTER, mounting type: snapped, for terminal block width: 10.2 mm, lettering field size: 9.6 x 5.1 mm, Number of individual labels: 48

PT 6-T P/P HV GY/BK - Disconnect terminal block



1326583

<https://www.phoenixcontact.com/us/products/1326583>

UC-TMF 10 CUS - Marker for terminal blocks

0824662

<https://www.phoenixcontact.com/us/products/0824662>



Marker for terminal blocks, can be ordered: by sheet, white, labeled according to customer specifications, mounting type: snap into flat marker groove, for terminal block width: 10.2 mm, lettering field size: 9.6 x 5.1 mm, Number of individual labels: 48

UCT-TMF 10 - Marker for terminal blocks

0829204

<https://www.phoenixcontact.com/us/products/0829204>



Marker for terminal blocks, Sheet, white, unlabeled, can be labeled with: TOPMARK NEO, TOPMARK LASER, BLUEMARK ID COLOR, BLUEMARK ID, BLUEMARK CLED, THERMOMARK PRIME, THERMOMARK CARD 2.0, THERMOMARK CARD, mounting type: snapped, for terminal block width: 10.2 mm, lettering field size: 9.4 x 4.7 mm, Number of individual labels: 36

PT 6-T P/P HV GY/BK - Disconnect terminal block

1326583

<https://www.phoenixcontact.com/us/products/1326583>



UCT-TMF 10 CUS - Marker for terminal blocks

0829679

<https://www.phoenixcontact.com/us/products/0829679>



Marker for terminal blocks, can be ordered: by sheet, white, labeled according to customer specifications, mounting type: snap into flat marker groove, for terminal block width: 10.2 mm, lettering field size: 9.4 x 4.7 mm, Number of individual labels: 36

MPS-MT/ 4MM - Test plugs

3048577

<https://www.phoenixcontact.com/us/products/3048577>



Test plugs, with solder connection up to 1 mm² conductor cross section, number of positions: 1, color: silver

PT 6-T P/P HV GY/BK - Disconnect terminal block

1326583

<https://www.phoenixcontact.com/us/products/1326583>



MPS-IH WH - Insulating sleeve

0201663

<https://www.phoenixcontact.com/us/products/0201663>

Insulating sleeve, color: white



MPS-IH RD - Insulating sleeve

0201676

<https://www.phoenixcontact.com/us/products/0201676>

Insulating sleeve, color: red



PT 6-T P/P HV GY/BK - Disconnect terminal block

1326583

<https://www.phoenixcontact.com/us/products/1326583>



MPS-IH BU - Insulating sleeve

0201689

<https://www.phoenixcontact.com/us/products/0201689>

Insulating sleeve, color: blue



MPS-IH YE - Insulating sleeve

0201692

<https://www.phoenixcontact.com/us/products/0201692>

Insulating sleeve, color: yellow



PT 6-T P/P HV GY/BK - Disconnect terminal block

1326583

<https://www.phoenixcontact.com/us/products/1326583>



MPS-IH GN - Insulating sleeve

0201702

<https://www.phoenixcontact.com/us/products/0201702>

Insulating sleeve, color: green



MPS-IH GY - Insulating sleeve

0201728

<https://www.phoenixcontact.com/us/products/0201728>

Insulating sleeve, color: gray



PT 6-T P/P HV GY/BK - Disconnect terminal block

1326583

<https://www.phoenixcontact.com/us/products/1326583>



MPS-IH BK - Insulating sleeve

0201731

<https://www.phoenixcontact.com/us/products/0201731>

Insulating sleeve, color: black



NS 32 PERF 2000MM-VPE 10 - DIN rail perforated

1201002

<https://www.phoenixcontact.com/us/products/1201002>



DIN rail perforated, acc. to EN 60715, material: Steel, galvanized, passivated with a thick layer, G profile, color: silver, Pack of 10 (20 m)

PT 6-T P/P HV GY/BK - Disconnect terminal block

1326583

<https://www.phoenixcontact.com/us/products/1326583>



NS 32 UNPERF 2000MM-VPE 10 - DIN rail, unperforated

1201015

<https://www.phoenixcontact.com/us/products/1201015>



DIN rail, unperforated, acc. to EN 60715, material: Steel, galvanized, passivated with a thick layer, G profile, color: silver, Pack of 10 (20 m)

E/UK - End clamp

1201442

<https://www.phoenixcontact.com/us/products/1201442>



End clamp, material: PA, color: gray, Mounting on a DIN rail NS 32 or NS 35

PT 6-T P/P HV GY/BK - Disconnect terminal block



1326583

<https://www.phoenixcontact.com/us/products/1326583>

E/UK 1 - End clamp

1201413

<https://www.phoenixcontact.com/us/products/1201413>



End clamps, for supporting the ends of double-level and three-level terminal blocks, width: 10 mm, color: gray

CLIPFIX 35 - End clamp

3022218

<https://www.phoenixcontact.com/us/products/3022218>



Quick mounting end clamp for NS 35/7,5 DIN rail or NS 35/15 DIN rail, with marking option, width: 9.5 mm, color: gray

PT 6-T P/P HV GY/BK - Disconnect terminal block



1326583

<https://www.phoenixcontact.com/us/products/1326583>

CLIPFIX 35-5 - End clamp

3022276

<https://www.phoenixcontact.com/us/products/3022276>

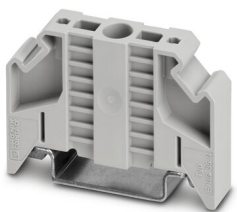


Quick mounting end clamp for NS 35/7,5 DIN rail or NS 35/15 DIN rail, with marking option, with parking option for FBS...5, FBS...6, KSS 5, KSS 6, width: 5.15 mm, color: gray

E/NS 35 N - End clamp

0800886

<https://www.phoenixcontact.com/us/products/0800886>



End clamp, width: 9.5 mm, color: gray

Phoenix Contact 2023 © - all rights reserved
<https://www.phoenixcontact.com>

Phoenix Contact USA
586 Fulling Mill Road
Middletown, PA 17057, United States
(+717) 944-1300
info@phoenixcon.com