

# CF 3000-2,5 120V - Electrical crimping tool



1205516

<https://www.phoenixcontact.com/us/products/1205516>

Please be informed that the data shown in this PDF document is generated from our online catalog. Please find the complete data in the user documentation. Our general terms of use for downloads are valid.



Stripping and crimping device, 120 V version, for taped insulated ferrules 0.25 ... 2.5 mm<sup>2</sup>, sleeve length 8 mm, incl. conversion kits 0.5 ... 2.5 mm<sup>2</sup>

## Your advantages

- Particularly suitable for pre-assembling conductors
- Suitable for class 2 and class 5 PVC conductors (H05V-K/H07V-K).<br/>Conductors with special insulating material and stranding can only be processed to a limited degree and with reservations.
- The conductor is stripped in a single step and crimped with a ferrule to a high standard of quality
- The compact stripping and crimping machine can be used to process taped ferrules with insulating collars according to DIN 46228-4
- Color coding according to ferrule standard DIN 46228-4 makes the assignment of modification components really clear
- The automatic device can be adapted to various cross sections in under a minute
- Thanks to its compact and lightweight design, it can also be used as a portable solution for transport between different work locations
- Up to 1200 conductors can be processed an hour

## Commercial data

Item number	1205516
Packing unit	1 pc
Minimum order quantity	1 pc
Sales key	BH32
Product key	BH3231
Catalog page	Page 438 (C-3-2019)
GTIN	4017918129125
Weight per piece (including packing)	15,710 g
Weight per piece (excluding packing)	15,710 g
Customs tariff number	84798100
Country of origin	DE

# CF 3000-2,5 120V - Electrical crimping tool



1205516

<https://www.phoenixcontact.com/us/products/1205516>

## Technical data

### Notes

General	Suitable for class 2 and 5 standard PVC conductors (H05V-K/H07V-K). Other conductor and insulation types can be processed to a limited extent.
---------	--

### Product properties

Product type	Crimping machine
Compression	trapezoidal
Conductor type	PVC
Insertion length minimum	49 mm
Min. cross section	0.25 mm <sup>2</sup>
Max. cross section	2.5 mm <sup>2</sup>
AWG min	24
AWG max	14

### Electrical properties

Frequency range	60 Hz
Power consumption	80 W
Nominal voltage U <sub>N</sub>	120 V

### Supply

Supply voltage	120 V AC
Supply voltage range	120 V

### Connection data

#### Conductor connection

Cross section range, metric	0.25 mm <sup>2</sup> ... 2.5 mm <sup>2</sup>
Cross section range AWG	24 ... 14
Stripping length	11.5 mm

### Dimensions

Width	165 mm
Height	300 mm
Length	320 mm

### Standards and regulations

Tests	DIN 46228-4: 1990-09
-------	----------------------

# CF 3000-2,5 120V - Electrical crimping tool



1205516

<https://www.phoenixcontact.com/us/products/1205516>

## Approvals

🔗 To download certificates, visit the product detail page: <https://www.phoenixcontact.com/us/products/1205516>



**EAC**

Approval ID: RU C-DE.AI30.B.01549

# CF 3000-2,5 120V - Electrical crimping tool



1205516

<https://www.phoenixcontact.com/us/products/1205516>

## Classifications

### ECLASS

ECLASS-11.0	17130101
ECLASS-12.0	17130101
ECLASS-13.0	17130101

### ETIM

ETIM 8.0	EC002778
----------	----------

### UNSPSC

UNSPSC 21.0	27111500
-------------	----------

# CF 3000-2,5 120V - Electrical crimping tool



1205516

<https://www.phoenixcontact.com/us/products/1205516>

## Environmental product compliance

REACH SVHC	Lead 7439-92-1
China RoHS	Environmentally Friendly Use Period = 25;
	For information on hazardous substances, refer to the manufacturer's declaration available under "Downloads"

# CF 3000-2,5 120V - Electrical crimping tool



1205516

<https://www.phoenixcontact.com/us/products/1205516>

## Accessories

### CF 3000-TOOLKIT 0,25 - Conversion kit

1212376

<https://www.phoenixcontact.com/us/products/1212376>

Extension kit, complete, for CF 3000, for taped insulated ferrules, 0.25/0.34 mm<sup>2</sup>, sleeve length 8 mm



---

### CF 3000 LOC 0,25 - Spare locator

1212377

<https://www.phoenixcontact.com/us/products/1212377>

Sleeve receiver for CF 3000-TOOLKIT 0,25



# CF 3000-2,5 120V - Electrical crimping tool



1205516

<https://www.phoenixcontact.com/us/products/1205516>

## CF 3000 LOC 0,5 - Spare locator

1205639

<https://www.phoenixcontact.com/us/products/1205639>



Sleeve receiver for 0.5 mm<sup>2</sup> sleeves

---

## CF 3000 LOC 0,75 - Spare locator

1205642

<https://www.phoenixcontact.com/us/products/1205642>



Sleeve receiver for 0.75 mm<sup>2</sup> sleeves

# CF 3000-2,5 120V - Electrical crimping tool



1205516

<https://www.phoenixcontact.com/us/products/1205516>

## CF 3000 LOC 1,0 - Spare locator

1205655

<https://www.phoenixcontact.com/us/products/1205655>



Sleeve receiver for 1.0 mm<sup>2</sup> sleeves

---

## CF 3000 LOC 1,5 - Spare locator

1205668

<https://www.phoenixcontact.com/us/products/1205668>



Sleeve receiver for 1.5 mm<sup>2</sup> sleeves



## CF 3000-2,5 120V - Electrical crimping tool

1205516

<https://www.phoenixcontact.com/us/products/1205516>



### CF 3000 LOC 2,5 - Spare locator

1205671

<https://www.phoenixcontact.com/us/products/1205671>



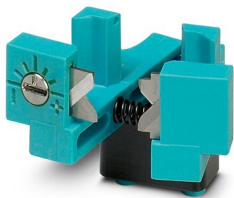
Sleeve receiver for 2.5 mm<sup>2</sup> sleeves

---

### CF 3000 AB 0,25 - Accessories

1212380

<https://www.phoenixcontact.com/us/products/1212380>



Replacement stripping blade, for CF 3000-TOOLKIT 0,25

# CF 3000-2,5 120V - Electrical crimping tool



1205516

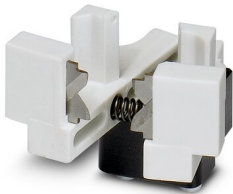
<https://www.phoenixcontact.com/us/products/1205516>

## CF 3000 AM 0,5 - Spare knife

1205587

<https://www.phoenixcontact.com/us/products/1205587>

Replacement knife for the automatic stripping and crimping device CF 3000-2,5



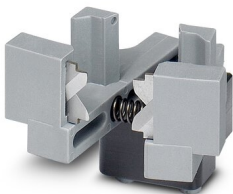
---

## CF 3000 AM 0,75 - Spare knife

1205590

<https://www.phoenixcontact.com/us/products/1205590>

Replacement knife for the automatic stripping and crimping device CF 3000-2,5



# CF 3000-2,5 120V - Electrical crimping tool



1205516

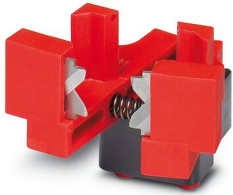
<https://www.phoenixcontact.com/us/products/1205516>

## CF 3000 AM 1,0 - Spare knife

1205600

<https://www.phoenixcontact.com/us/products/1205600>

Replacement knife for the automatic stripping and crimping device CF 3000-2,5



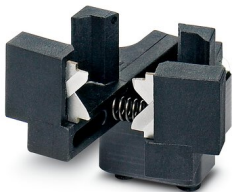
---

## CF 3000 AM 1,5 - Spare knife

1205613

<https://www.phoenixcontact.com/us/products/1205613>

Replacement knife for the automatic stripping and crimping device CF 3000-2,5



# CF 3000-2,5 120V - Electrical crimping tool



1205516

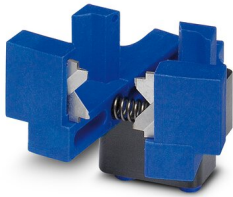
<https://www.phoenixcontact.com/us/products/1205516>

## CF 3000 AM 2,5 - Spare knife

1205626

<https://www.phoenixcontact.com/us/products/1205626>

Replacement knife for the automatic stripping and crimping device CF 3000-2,5



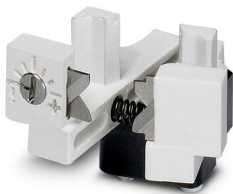
---

## CF 3000 AB 0,5 - Accessories

1207886

<https://www.phoenixcontact.com/us/products/1207886>

Adjustable spare stripping knife, 0.5 mm<sup>2</sup>, for crimping machine CF 3000



# CF 3000-2,5 120V - Electrical crimping tool



1205516

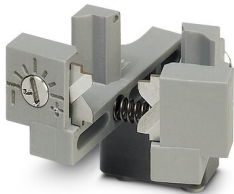
<https://www.phoenixcontact.com/us/products/1205516>

## CF 3000 AB 0,75 - Accessories

1207899

<https://www.phoenixcontact.com/us/products/1207899>

Adjustable spare stripping knife, 0.75 mm<sup>2</sup>, for crimping machine CF 3000



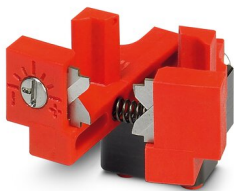
---

## CF 3000 AB 1,0 - Accessories

1207909

<https://www.phoenixcontact.com/us/products/1207909>

Adjustable spare stripping knife, 1.0 mm<sup>2</sup>, for crimping machine CF 3000



# CF 3000-2,5 120V - Electrical crimping tool



1205516

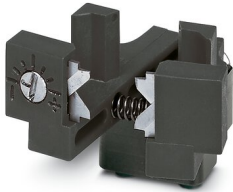
<https://www.phoenixcontact.com/us/products/1205516>

## CF 3000 AB 1,5 - Accessories

1207912

<https://www.phoenixcontact.com/us/products/1207912>

Replacement stripping knives 1.5 mm<sup>2</sup>, for crimp automat CF 3000



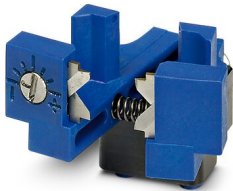
---

## CF 3000 AB 2,5 - Accessories

1207925

<https://www.phoenixcontact.com/us/products/1207925>

Adjustable spare stripping knife, 2.5 mm<sup>2</sup>, for crimping machine CF 3000



# CF 3000-2,5 120V - Electrical crimping tool



1205516

<https://www.phoenixcontact.com/us/products/1205516>

## CF 3000 BBE 0,5 - Replacement part

1205752

<https://www.phoenixcontact.com/us/products/1205752>



Replacement processing insert 0.5 mm<sup>2</sup>, for the crimping device CF 3000-2,5

---

## CF 3000 BBE 0,75 - Replacement part

1205765

<https://www.phoenixcontact.com/us/products/1205765>



Replacement processing insert 0.75 mm<sup>2</sup>, for the crimping device CF 3000-2,5

# CF 3000-2,5 120V - Electrical crimping tool



1205516

<https://www.phoenixcontact.com/us/products/1205516>

## CF 3000 BBE 1,0 - Replacement part

1205778

<https://www.phoenixcontact.com/us/products/1205778>



Replacement processing insert 1.0 mm<sup>2</sup>, for the crimping device CF 3000-2,5

---

## CF 3000 BBE 1,5 - Replacement part

1205781

<https://www.phoenixcontact.com/us/products/1205781>



Replacement processing insert 1.5 mm<sup>2</sup>, for the crimping device CF 3000-2,5



# CF 3000-2,5 120V - Electrical crimping tool



1205516

<https://www.phoenixcontact.com/us/products/1205516>

## CF 3000 BBE 2,5 - Replacement part

1205794

<https://www.phoenixcontact.com/us/products/1205794>



Replacement processing insert 2.5 mm<sup>2</sup>, for the crimping device CF 3000-2,5

---

## CF 3000 BBE-AME 0,25 - Replacement part

1207514

<https://www.phoenixcontact.com/us/products/1207514>



Replacement processing insert, for CF 3000-TOOLKIT 0,25, with adjustable blade

# CF 3000-2,5 120V - Electrical crimping tool



1205516

<https://www.phoenixcontact.com/us/products/1205516>

## CF 3000 BBE-AME 0,5 - Replacement part

1207488

<https://www.phoenixcontact.com/us/products/1207488>



Replacement processing insert 0.5 mm<sup>2</sup>, for the crimping device CF 3000-2,5

---

## CF 3000 BBE-AME 0,75 - Replacement part

1207475

<https://www.phoenixcontact.com/us/products/1207475>



Replacement processing insert 0.75 mm<sup>2</sup>, for the crimping device CF 3000-2,5

# CF 3000-2,5 120V - Electrical crimping tool



1205516

<https://www.phoenixcontact.com/us/products/1205516>

## CF 3000 BBE-AME 1,0 - Replacement part

1207491

<https://www.phoenixcontact.com/us/products/1207491>



Replacement processing insert 1.0 mm<sup>2</sup>, for the crimping device CF 3000-2,5

---

## CF 3000 BBE-AME 1,5 - Replacement part

1207501

<https://www.phoenixcontact.com/us/products/1207501>



Replacement processing insert 1.5 mm<sup>2</sup>, for the crimping device CF 3000-2,5

# CF 3000-2,5 120V - Electrical crimping tool



1205516

<https://www.phoenixcontact.com/us/products/1205516>

## CF 3000 BBE-AME 2,5 - Replacement part

1207527

<https://www.phoenixcontact.com/us/products/1207527>



Replacement processing insert 2.5 mm<sup>2</sup>, for the crimping device CF 3000-2,5

---

## CF 3000 CDF 0,25 - Replacement die

1212389

<https://www.phoenixcontact.com/us/products/1212389>



Replacement crimping die, for CF 3000-TOOLKIT 0,25 (0.25 to 0.75 mm<sup>2</sup>)

# CF 3000-2,5 120V - Electrical crimping tool



1205516

<https://www.phoenixcontact.com/us/products/1205516>

## CF 3000 CDM 0,25 - Replacement die

1212390

<https://www.phoenixcontact.com/us/products/1212390>

Replacement crimping stamp, for CF 3000-TOOLKIT 0,25 (0.25 to 0.75 mm<sup>2</sup>)



---

## CF 3000 CFB 0,25 - Replacement part

1212392

<https://www.phoenixcontact.com/us/products/1212392>

Replacement centering fork (bottom), for CF 3000-TOOLKIT 0,25



# CF 3000-2,5 120V - Electrical crimping tool

1205516

<https://www.phoenixcontact.com/us/products/1205516>



## CF 3000 CFT 0,25 - Replacement part

1212391

<https://www.phoenixcontact.com/us/products/1212391>

Replacement centering fork (top), for CF 3000-TOOLKIT 0,25



---

## CF 3000 CG 0,25 - Replacement part

1212379

<https://www.phoenixcontact.com/us/products/1212379>

Replacement cable routing, for CF 3000-TOOLKIT 0,25



# CF 3000-2,5 120V - Electrical crimping tool



1205516

<https://www.phoenixcontact.com/us/products/1205516>

## CF 3000 CG 0,5 - Replacement part

1207721

<https://www.phoenixcontact.com/us/products/1207721>



Replacement cable guide 0.5 mm<sup>2</sup>, for sleeve feed CF 3000 HZG 0,5

---

## CF 3000 CG 0,75 - Replacement part

1207734

<https://www.phoenixcontact.com/us/products/1207734>



Replacement cable guide 0,75 mm<sup>2</sup>, for sleeve feed CF 3000 HZG 0,75

# CF 3000-2,5 120V - Electrical crimping tool



1205516

<https://www.phoenixcontact.com/us/products/1205516>

## CF 3000 CG 1,0 - Replacement part

1207747

<https://www.phoenixcontact.com/us/products/1207747>

Replacement cable guide 1.0 mm<sup>2</sup>, for sleeve feed CF 3000 HZG 1,0



---

## CF 3000 CG 1,5 - Replacement part

1207750

<https://www.phoenixcontact.com/us/products/1207750>

Replacement cable guide 1.5 mm<sup>2</sup>, for sleeve feed CF 3000 HZG 1,5





# CF 3000-2,5 120V - Electrical crimping tool



1205516

<https://www.phoenixcontact.com/us/products/1205516>

## CF 3000 CG 2,5 - Replacement part

1207763

<https://www.phoenixcontact.com/us/products/1207763>

Replacement cable guide 2.5 mm<sup>2</sup>, for sleeve feed CF 3000 HZG 2,5



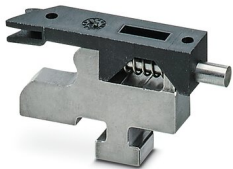
---

## CF 3000 CRIMPGESSENK - Replacement die

3202779

<https://www.phoenixcontact.com/us/products/3202779>

Replacement crimping die, for the crimping device CF 3000-2,5



# CF 3000-2,5 120V - Electrical crimping tool



1205516

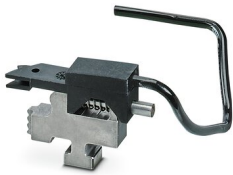
<https://www.phoenixcontact.com/us/products/1205516>

## CF 3000 CRIMPSTEMPEL - Replacement die

3202782

<https://www.phoenixcontact.com/us/products/3202782>

Replacement crimping stamp, for the crimping device CF 3000-2,5



---

## CF 3000 HAUBE - Covering hood

3202614

<https://www.phoenixcontact.com/us/products/3202614>

Replacement hood, for the crimping device CF 3000-2,5



# CF 3000-2,5 120V - Electrical crimping tool



1205516

<https://www.phoenixcontact.com/us/products/1205516>

## CF 3000 HZG 0,25 - Replacement sleeve feed

1212378

<https://www.phoenixcontact.com/us/products/1212378>

Replacement sleeve feed, for CF 3000-TOOLKIT 0,25



---

## CF 3000 HZG 0,5 - Replacement sleeve feed

1205684

<https://www.phoenixcontact.com/us/products/1205684>

Replacement sleeve feed, for the crimping device CF 3000-2,5



# CF 3000-2,5 120V - Electrical crimping tool



1205516

<https://www.phoenixcontact.com/us/products/1205516>

## CF 3000 HZG 0,75 - Replacement sleeve feed

1205697

<https://www.phoenixcontact.com/us/products/1205697>



Replacement sleeve feed, for the crimping device CF 3000-2,5

---

## CF 3000 HZG 1,0 - Replacement sleeve feed

1205707

<https://www.phoenixcontact.com/us/products/1205707>



Replacement sleeve feed, for the crimping device CF 3000-2,5

# CF 3000-2,5 120V - Electrical crimping tool



1205516

<https://www.phoenixcontact.com/us/products/1205516>

## CF 3000 HZG 1,5 - Replacement sleeve feed

1205710

<https://www.phoenixcontact.com/us/products/1205710>



Replacement sleeve feed, for the crimping device CF 3000-2,5

---

## CF 3000 HZG 2,5 - Replacement sleeve feed

1205723

<https://www.phoenixcontact.com/us/products/1205723>



Replacement sleeve feed, for the crimping device CF 3000-2,5

## CF 3000-2,5 120V - Electrical crimping tool

1205516

<https://www.phoenixcontact.com/us/products/1205516>



### CF 3000 REVERSE TASTE - Replacement part

3202685

<https://www.phoenixcontact.com/us/products/3202685>

Replacement key for crimping machine



---

### CF 3000 SBO - Replacement part

1205804

<https://www.phoenixcontact.com/us/products/1205804>

Replacement fixing bolts, for the crimping device CF 3000-2,5



# CF 3000-2,5 120V - Electrical crimping tool



1205516

<https://www.phoenixcontact.com/us/products/1205516>

## CF 3000 SCHWENKARM KOMPL. - Replacement part

3202766

<https://www.phoenixcontact.com/us/products/3202766>

Replacement swivel arm, for the crimping device CF 3000-2,5



---

## CF 3000 SI 0,63A/T/250V - Replacement fuse

1205736

<https://www.phoenixcontact.com/us/products/1205736>

Replacement fuse, for the crimping device CF 3000-2,5



# CF 3000-2,5 120V - Electrical crimping tool

1205516

<https://www.phoenixcontact.com/us/products/1205516>



## CF 3000 SI 1,25 A/T/120 V - Tool

1208940

<https://www.phoenixcontact.com/us/products/1208940>

Accessories for crimping machine



---

## CF 3000 SI 4,0A/T/250V - Replacement fuse

1205749

<https://www.phoenixcontact.com/us/products/1205749>

Replacement fuse, for the crimping device CF 3000-2,5





# CF 3000-2,5 120V - Electrical crimping tool



1205516

<https://www.phoenixcontact.com/us/products/1205516>

## CF 3000 TOOL BOX - Case

1206120

<https://www.phoenixcontact.com/us/products/1206120>

Case, unequipped



---

## CF 3000 TOOL CASE AB - Accessories for tools/automatic devices

3202957

<https://www.phoenixcontact.com/us/products/3202957>

Conversion kits, for CF 3000, with adjustable stripping gauge, for insulated ferrules as taped products, 0.5 ... 2.5 mm<sup>2</sup>, packaged in a robust case.



# CF 3000-2,5 120V - Electrical crimping tool



1205516

<https://www.phoenixcontact.com/us/products/1205516>

## CF 3000 ZENTRIERGABEL OBEN - Replacement part

3202740

<https://www.phoenixcontact.com/us/products/3202740>



Replacement centering fork (top), for the crimping device CF 3000-2,5

---

## CF 3000 ZENTRIERGABEL UNTEN - Replacement part

3202753

<https://www.phoenixcontact.com/us/products/3202753>



Replacement centering fork (bottom), for the crimping device CF 3000-2,5

# CF 3000-2,5 120V - Electrical crimping tool



1205516

<https://www.phoenixcontact.com/us/products/1205516>

## CF 3000 GEHAEUSE HINTEN - Housing part

3202669

<https://www.phoenixcontact.com/us/products/3202669>

Rear housing part for crimping machine



---

## CF 3000 GUMMIFUESSE - Replacement part

3202656

<https://www.phoenixcontact.com/us/products/3202656>

Replacement rubber feet, for the crimping device CF 3000-2,5



## CF 3000-2,5 120V - Electrical crimping tool

1205516

<https://www.phoenixcontact.com/us/products/1205516>



### CF 3000 STEUERUNGSPLATINE - Accessories

3202795

<https://www.phoenixcontact.com/us/products/3202795>



Replacement controller PCB, for the CF 3000-2,5 crimping device

---

### AI 0,25-8 YE-B - Ferrule

3240251

<https://www.phoenixcontact.com/us/products/3240251>

Ferrules, taped, 0.25 mm<sup>2</sup>, sleeve length: 8 mm, color: yellow (CF 3000-TOOLKIT 0,25 is required)



# CF 3000-2,5 120V - Electrical crimping tool



1205516

<https://www.phoenixcontact.com/us/products/1205516>

## AI 0,5 - 8 WH-B - Ferrule

3201369

<https://www.phoenixcontact.com/us/products/3201369>

Ferrules, 0.5 mm<sup>2</sup>, taped, sleeve length: 8 mm, with plastic collar, galvanically tin-plated, color: white, color range according to DIN 46228-4, CSA-certified



---

## AI 0,75- 8 GY-B - Ferrule

3201372

<https://www.phoenixcontact.com/us/products/3201372>

Ferrules, 0.75 mm<sup>2</sup>, taped, sleeve length: 8 mm, with plastic collar, galvanically tin-plated, color: gray, color range according to DIN 46228-4, CSA-certified



# CF 3000-2,5 120V - Electrical crimping tool



1205516

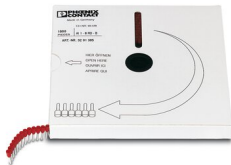
<https://www.phoenixcontact.com/us/products/1205516>

## AI 1 - 8 RD-B - Ferrule

3201385

<https://www.phoenixcontact.com/us/products/3201385>

Ferrules, 1.0 mm<sup>2</sup>, taped, sleeve length: 8 mm, with plastic collar, galvanically tin-plated, color: red, color range according to DIN 46228-4, CSA-certified



---

## AI 1,5 - 8 BK-B - Ferrule

3201398

<https://www.phoenixcontact.com/us/products/3201398>

Ferrules, 1.5 mm<sup>2</sup>, taped, sleeve length: 8 mm, with plastic collar, galvanically tin-plated, color: black, color range according to DIN 46228-4, CSA-certified



# CF 3000-2,5 120V - Electrical crimping tool



1205516

<https://www.phoenixcontact.com/us/products/1205516>

## AI 2,5 - 8 BU-B - Ferrule

3201408

<https://www.phoenixcontact.com/us/products/3201408>

Ferrules, 2.5 mm<sup>2</sup>, taped, sleeve length: 8 mm, with plastic collar, galvanically tin-plated, color: blue, color range according to DIN 46228-4, CSA-certified



---

## AI 0,75- 8 BU-B - Ferrule

3201547

<https://www.phoenixcontact.com/us/products/3201547>

Ferrule, sleeve length: 8 mm, length: 14 mm, color: blue



# CF 3000-2,5 120V - Electrical crimping tool



1205516

<https://www.phoenixcontact.com/us/products/1205516>

## AI 2,5 - 8 GY-B - Ferrule

3201550

<https://www.phoenixcontact.com/us/products/3201550>

Ferrule, sleeve length: 8 mm, length: 14 mm, color: gray



---

## AI 0,25-8 BU-B - Ferrule

3240250

<https://www.phoenixcontact.com/us/products/3240250>

Ferrules, taped, 0.25 mm<sup>2</sup>, sleeve length: 8 mm, color: blue (CF 3000-TOOLKIT 0,25 is required)





# CF 3000-2,5 120V - Electrical crimping tool



1205516

<https://www.phoenixcontact.com/us/products/1205516>

## AI 0,34-8 TQ-B - Ferrule

3240249

<https://www.phoenixcontact.com/us/products/3240249>

Ferrules, taped, 0.34 mm<sup>2</sup>, sleeve length: 8 mm, color: turquoise (CF 3000-TOOLKIT 0,25 is required)



---

## AI 0,5 - 8 OG-B - Ferrule

3201563

<https://www.phoenixcontact.com/us/products/3201563>

Ferrule, sleeve length: 8 mm, length: 14 mm, color: orange



# CF 3000-2,5 120V - Electrical crimping tool



1205516

<https://www.phoenixcontact.com/us/products/1205516>

## Al 0,75- 8 WH-B - Ferrule

3201576

<https://www.phoenixcontact.com/us/products/3201576>

Ferrule, sleeve length: 8 mm, length: 14 mm, color: white



---

## Al 1 - 8 YE-B - Ferrule

3201589

<https://www.phoenixcontact.com/us/products/3201589>

Ferrule, sleeve length: 8 mm, length: 14 mm, color: yellow



# CF 3000-2,5 120V - Electrical crimping tool

1205516

<https://www.phoenixcontact.com/us/products/1205516>

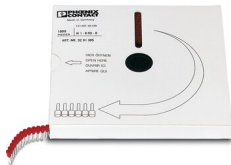


## Al 1,5 - 8 RD-B - Ferrule

3201592

<https://www.phoenixcontact.com/us/products/3201592>

Ferrule, sleeve length: 8 mm, length: 14 mm, color: red



Phoenix Contact 2023 © - all rights reserved

<https://www.phoenixcontact.com>

Phoenix Contact USA  
586 Fulling Mill Road  
Middletown, PA 17057, United States  
(+717) 944-1300  
[info@phoenixcon.com](mailto:info@phoenixcon.com)