

# CABLE-D37F/4XD15F/8,0M/ETHA - Cable



1119206  
<https://www.phoenixcontact.com/us/products/1119206>

Please be informed that the data shown in this PDF document is generated from our online catalog. Please find the complete data in the user documentation. Our general terms of use for downloads are valid.



Round cable set; controller: Siemens SIMATIC® ET 200SP HA; connection 1: D-SUB socket strip (1x 37-position); connection 2: D-SUB socket strip (4x 15-position); cable length: 8 m

## Commercial data

Item number	1119206
Packing unit	1 pc
Minimum order quantity	1 pc
Note	Made to order (non-returnable)
Sales key	C421
Product key	CK2155
GTIN	4063151048631
Weight per piece (including packing)	1,815.7 g
Weight per piece (excluding packing)	1,800 g
Customs tariff number	85444290
Country of origin	DE

# CABLE-D37F/4XD15F/8,0M/ETHA - Cable



1119206

<https://www.phoenixcontact.com/us/products/1119206>

## Technical data

### Product properties

Product type	System cable
--------------	--------------

### Environmental and real-life conditions

#### Ambient conditions

Degree of protection	IP00
Degree of protection (Installation location)	≥ IP54 (Installation location)
Ambient temperature (operation)	-40 °C ... 70 °C (fixed installation) -10 °C ... 70 °C (flexible installation)
Ambient temperature (storage/transport)	-40 °C ... 80 °C
Altitude	≤ 2000 m

### Electrical properties

Operating voltage (AC)	≤ 30 V AC
Operating voltage (DC)	≤ 60 V DC
Nominal operating mode	100% operating factor
Current (Per path, 50°C)	≤ 1 A (Uncoiled, see derating)
Current (Per path, 70°C)	≤ 0.6 A (Uncoiled, see derating)

#### Supported controller SIEMENS ET 200SP HA

Suitable terminal block	6DL1193-6TP00-0BH1
	6DL1193-6TP00-0DH1
	6DL1193-6TP00-0BM1
	6DL1193-6TP00-0DM1
Suitable I/O module	6DL1131-6BL00-0PH1 (Terminal Block H1/M1)
	6DL1132-6BL00-0PH1 (Terminal Block H1/M1)

### Cable/line

Cable length	8 m
--------------	-----

#### 10X0.14 [PVC]

UL AWM Style	2464/1061
Number of positions	10
Shielded	no
Cable type	10X0.14 [PVC]
Conductor type	Round cable set
Conductor structure signal line	7x 0.16 mm
AWG signal line	26
Conductor cross section	10x 0.14 mm <sup>2</sup>
Wire diameter incl. insulation	1 mm ±0.03 mm
External cable diameter	6.1 mm ±0.4 mm
Outer sheath, material	Semi-rigid PVC

# CABLE-D37F/4XD15F/8,0M/ETHA - Cable



1119206

<https://www.phoenixcontact.com/us/products/1119206>

External sheath, color	gray
Conductor material	Tin-plated Cu litz wires
Cable resistance	$\leq 145 \Omega/\text{km}$ (20 °C)
Insulation resistance	$\geq 20 \text{ M}\Omega \cdot \text{km}$ (20 °C)
Smallest bending radius, fixed installation	52 mm
Smallest bending radius, movable installation	98 mm
Max. bending cycles	5000
Halogen-free	no
Flame resistance	IEC 60332-1-2 (raw cable)
	VDE 0842, Part 332-1-2 (raw cable)
	IEC 60332-3-22 (raw cable)
	UL VW-1
	CSA FT-1
Resistance to oil	can withstand occasional splashes (raw cable)

## color code

D-SUB 37 X1 (1)	D-SUB15 X2 (1) = black
D-SUB 37 X1 (2)	D-SUB15 X2 (2) = brown
D-SUB 37 X1 (3)	D-SUB15 X2 (3) = red
D-SUB 37 X1 (4)	D-SUB15 X2 (4) = orange
D-SUB 37 X1 (5)	D-SUB15 X2 (5) = yellow
D-SUB 37 X1 (6)	D-SUB15 X2 (6) = green
D-SUB 37 X1 (7)	D-SUB15 X2 (7) = blue
D-SUB 37 X1 (8)	D-SUB15 X2 (8) = violet
D-SUB 37 X1 (17)	D-SUB15 X2 (9) = gray
D-SUB 37 X1 (36)	D-SUB15 X2 (10) = white
D-SUB 37 X1 (9)	D-SUB15 X3 (1) = black
D-SUB 37 X1 (10)	D-SUB15 X3 (2) = brown
D-SUB 37 X1 (11)	D-SUB15 X3 (3) = red
D-SUB 37 X1 (12)	D-SUB15 X3 (4) = orange
D-SUB 37 X1 (13)	D-SUB15 X3 (5) = yellow
D-SUB 37 X1 (14)	D-SUB15 X3 (6) = green
D-SUB 37 X1 (15)	D-SUB15 X3 (7) = blue
D-SUB 37 X1 (16)	D-SUB15 X3 (8) = violet
D-SUB 37 X1 (18)	D-SUB15 X3 (9) = gray
D-SUB 37 X1 (37)	D-SUB15 X3 (10) = white
D-SUB 37 X1 (20)	D-SUB15 X4 (1) = black
D-SUB 37 X1 (21)	D-SUB15 X4 (2) = brown
D-SUB 37 X1 (22)	D-SUB15 X4 (3) = red
D-SUB 37 X1 (23)	D-SUB15 X4 (4) = orange
D-SUB 37 X1 (24)	D-SUB15 X4 (5) = yellow
D-SUB 37 X1 (25)	D-SUB15 X4 (6) = green
D-SUB 37 X1 (26)	D-SUB15 X4 (7) = blue
D-SUB 37 X1 (27)	D-SUB15 X4 (8) = violet

# CABLE-D37F/4XD15F/8,0M/ETHA - Cable



1119206

<https://www.phoenixcontact.com/us/products/1119206>

D-SUB 37 X1 (17)	D-SUB15 X4 (9) = gray
D-SUB 37 X1 (36)	D-SUB15 X4 (10) = white
D-SUB 37 X1 (28)	D-SUB15 X5 (1) = black
D-SUB 37 X1 (29)	D-SUB15 X5 (2) = brown
D-SUB 37 X1 (30)	D-SUB15 X5 (3) = red
D-SUB 37 X1 (31)	D-SUB15 X5 (4) = orange
D-SUB 37 X1 (32)	D-SUB15 X5 (5) = yellow
D-SUB 37 X1 (33)	D-SUB15 X5 (6) = green
D-SUB 37 X1 (34)	D-SUB15 X5 (7) = blue
D-SUB 37 X1 (35)	D-SUB15 X5 (8) = violet
D-SUB 37 X1 (18)	D-SUB15 X5 (9) = gray
D-SUB 37 X1 (37)	D-SUB15 X5 (10) = white

## Connection data

### Connection 1

Connection in acc. with standard	IEC 60807-2
	DIN 41652
Connection method	D-SUB socket strip
Screw thread	UNC 4-40
	M2,5
Number of connections	1
Number of positions	37
Tightening torque	0.2 Nm
Insertion/withdrawal cycles	> 200
Pitch	2.77 mm

### Connection 2

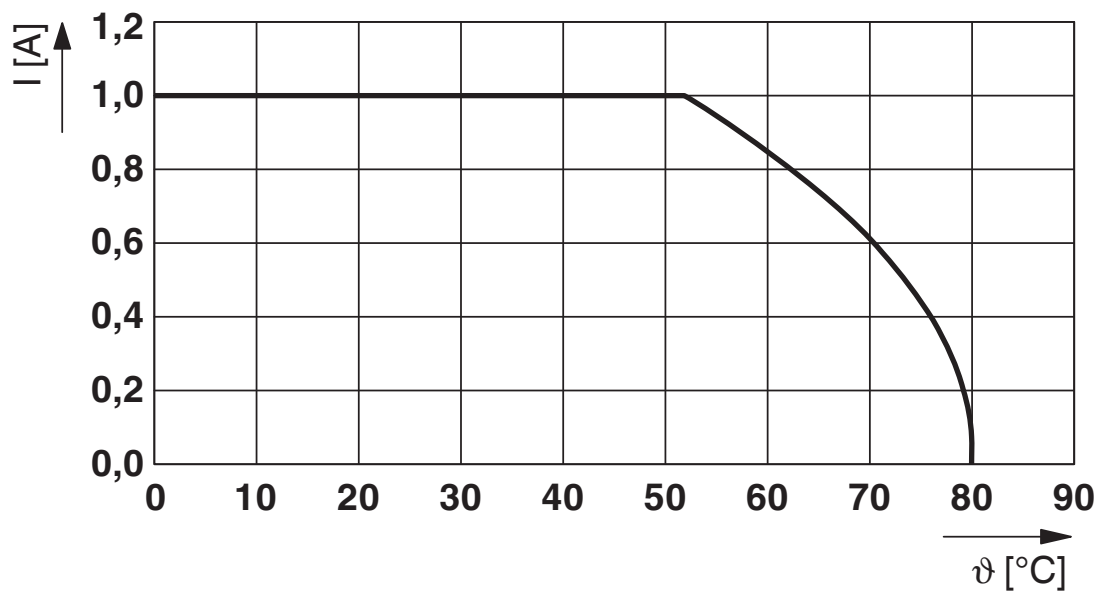
Connection in acc. with standard	IEC 60807-2
	DIN 41652
Connection method	D-SUB socket strip
Screw thread	UNC 4-40
	M2,5
Number of connections	4
Number of positions	15
Tightening torque	0.2 Nm
Insertion/withdrawal cycles	> 200
Pitch	2.74 mm

## Notes

General	For proper use, the specifications of the installation directive (see Downloads) must be observed. For applications or use with third-party products, the specifications, and the safety and warning instructions of the respective third-party manufacturer must also be met.
---------	--

## Drawings

Diagram



Maximum permissible current per path in uncoiled state

# CABLE-D37F/4XD15F/8,0M/ETHA - Cable



1119206

<https://www.phoenixcontact.com/us/products/1119206>

## Approvals

 To download certificates, visit the product detail page: <https://www.phoenixcontact.com/us/products/1119206>



**UL Listed**

Approval ID: FILE E 238705



**cUL Listed**

Approval ID: FILE E 238705

**cULus Listed**

# CABLE-D37F/4XD15F/8,0M/ETHA - Cable



1119206

<https://www.phoenixcontact.com/us/products/1119206>

## Classifications

### ECLASS

ECLASS-11.0	27242220
ECLASS-12.0	27242220
ECLASS-13.0	27242220

### ETIM

ETIM 8.0	EC000237
----------	----------

### UNSPSC

UNSPSC 21.0	26121600
-------------	----------

# CABLE-D37F/4XD15F/8,0M/ETHA - Cable



1119206

<https://www.phoenixcontact.com/us/products/1119206>

## Environmental product compliance

REACH SVHC	Lead 7439-92-1
China RoHS	Environmentally Friendly Use Period = 50 years
	For information on hazardous substances, refer to the manufacturer's declaration available under "Downloads"



# CABLE-D37F/4XD15F/8,0M/ETHA - Cable



1119206

<https://www.phoenixcontact.com/us/products/1119206>

## Accessories

### FLKM-PA-D37/ETHA - Front adapter

1076338

<https://www.phoenixcontact.com/us/products/1076338>



VARIOFACE front adapter for Siemens SIMATIC® ET 200SP HA, with a 37-pos. D-SUB male strip for digital 24 V DC and analog peripheral modules, max. 32 channels can be connected

---

### PLC-V8/D15S/OUT - System connection

2296058

<https://www.phoenixcontact.com/us/products/2296058>



V8 adapter for 8 x PLC-INTERFACE (6.2 mm), controller: PLC system cabling of output cards, connection 1: D-SUB pin strip 1x 15-position, connection 2: Plug-in connection (Can be snapped onto 8x PLC-INTERFACE terminals), connection 3: Screw connection 1x 2-position, number of channels: 8, control logic: plusschaltend

# CABLE-D37F/4XD15F/8,0M/ETHA - Cable

1119206

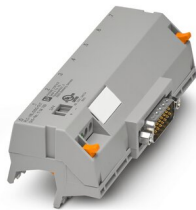
<https://www.phoenixcontact.com/us/products/1119206>



## PLC-V8L/D15S/OUT - System connection

1104789

<https://www.phoenixcontact.com/us/products/1104789>



V8 adapter for 8 x PLC-INTERFACE (14 mm), connection 1: D-SUB pin strip 1x 15-position, connection 2: Plug-in connection (Can be snapped onto 8x PLC-INTERFACE terminals), connection 3: Screw connection 1x 2-position, number of channels: 8, control logic: plusschaltend

---

## PLC-V8/D15S/IN - System connection

2296074

<https://www.phoenixcontact.com/us/products/2296074>



V8 adapter for 8 x PLC-INTERFACE (6.2 mm), controller: PLC system cabling of input cards, connection 1: D-SUB pin strip 1x 15-position, connection 2: Plug-in connection (Can be snapped onto 8x PLC-INTERFACE terminals), connection 3: Screw connection 1x 2-position, number of channels: 8, control logic: plusschaltend

---

Phoenix Contact 2023 © - all rights reserved  
<https://www.phoenixcontact.com>

Phoenix Contact USA  
586 Fulling Mill Road  
Middletown, PA 17057, United States  
(+717) 944-1300  
[info@phoenixcon.com](mailto:info@phoenixcon.com)