

CDC-MP 0,5-1,5 - Crimp contact



1016662

<https://www.phoenixcontact.com/pc/products/1016662>

Please be informed that the data shown in this PDF document is generated from our online catalog. Please find the complete data in the user documentation. Our general terms of use for downloads are valid.



Crimp contact

Commercial data

Item number	1016662
Packing unit	100 pc
Minimum order quantity	100 pc
Note	Made to order (non-returnable)
Product key	AACDCA
GTIN	4055626497181
Weight per piece (including packing)	0.18 g
Weight per piece (excluding packing)	0.18 g
Customs tariff number	85366990
Country of origin	DE

CDC-MP 0,5-1,5 - Crimp contact

1016662

<https://www.phoenixcontact.com/pc/products/1016662>



Technical data

Notes

General	The crimp contacts may only be processed with approved crimping tools.
General	The crimp heights depend on the crimping tool used. You can find the values in the tool documentation.

Mounting

Connection method	Crimp connection
-------------------	------------------

Product properties

Product type	Crimp contact
Product family	CDC-MP

Connection data

Connection method	Crimp connection
Contact connection type	Socket
Stripping length	3.5 mm
Conductor cross section flexible	0.5 mm ² ... 1.5 mm ²
Conductor cross section AWG	20 ... 16

Material specifications

Contact surface	Tin Sn
Contact surface material	Tin
Metal surface terminal point (top layer)	Tin (2 - 4 µm Sn)
Metal surface contact area (top layer)	Tin (2 - 4 µm Sn)

Electrical properties

Nominal current I _N	8 A
--------------------------------	-----

Packaging specifications

Type of packaging	Bulk goods
-------------------	------------

CDC-MP 0,5-1,5 - Crimp contact

1016662

<https://www.phoenixcontact.com/pc/products/1016662>



Classifications

ECLASS

ECLASS-11.0	27460403
ECLASS-12.0	27460403
ECLASS-13.0	27460403

ETIM

ETIM 8.0	EC000796
----------	----------

UNSPSC

UNSPSC 21.0	39121500
-------------	----------

CDC-MP 0,5-1,5 - Crimp contact

1016662

<https://www.phoenixcontact.com/pc/products/1016662>



Environmental product compliance

China RoHS	Environmentally friendly use period: unlimited = EFUP-e
	No hazardous substances above threshold values

CDC-MP 0,5-1,5 - Crimp contact

1016662

<https://www.phoenixcontact.com/pc/products/1016662>



Accessories

CRIMPFOX-P CDC 1.5L - Crimping pliers

1142832

<https://www.phoenixcontact.com/pc/products/1142832>



Crimping tool, for COMBICON crimp connectors, cross section: 0.50 ... 1.50 mm², unlockable pressure lock, precise parallel crimping, front entry, incl. positioning tool

CDDC 1,5/ 2-PV-3,5 - Direct connector

1016515

<https://www.phoenixcontact.com/pc/products/1016515>



PCB direct plug, nominal cross section: 1.5 mm², color: green, nominal current: 8 A, rated voltage (III/2): 160 V, contact surface: Tin, number of potentials: 4, number of rows: 2, number of positions: 2, number of connections: 4, product range: CDDC 1,5/..-PV, pitch: 3.5 mm, connection method: Crimp connection, mounting: SKEDD - Direct plug-in technology, conductor/PCB connection direction: 90 °, pin layout: Linear pinning, plug-in system: SKEDD, locking: Snap-in locking, mounting: Self-locking flange, type of packaging: packed in cardboard

CDC-MP 0,5-1,5 - Crimp contact

1016662

<https://www.phoenixcontact.com/pc/products/1016662>



CDDC 1,5/ 3-PV-3,5 - Direct connector

1016513

<https://www.phoenixcontact.com/pc/products/1016513>



PCB direct plug, nominal cross section: 1.5 mm², color: green, nominal current: 8 A, rated voltage (III/2): 160 V, contact surface: Tin, number of potentials: 6, number of rows: 2, number of positions: 3, number of connections: 6, product range: CDDC 1,5/...-PV, pitch: 3.5 mm, connection method: Crimp connection, mounting: SKEDD - Direct plug-in technology, conductor/PCB connection direction: 90 °, pin layout: Linear pinning, plug-in system: SKEDD, locking: Snap-in locking, mounting: Self-locking flange, type of packaging: packed in cardboard

CDDC 1,5/ 4-PV-3,5 - Direct connector

1016512

<https://www.phoenixcontact.com/pc/products/1016512>



PCB direct plug, nominal cross section: 1.5 mm², color: green, nominal current: 8 A, rated voltage (III/2): 160 V, contact surface: Tin, number of potentials: 8, number of rows: 2, number of positions: 4, number of connections: 8, product range: CDDC 1,5/...-PV, pitch: 3.5 mm, connection method: Crimp connection, mounting: SKEDD - Direct plug-in technology, conductor/PCB connection direction: 90 °, pin layout: Linear pinning, plug-in system: SKEDD, locking: Snap-in locking, mounting: Self-locking flange, type of packaging: packed in cardboard

CDC-MP 0,5-1,5 - Crimp contact

1016662

<https://www.phoenixcontact.com/pc/products/1016662>



CDDC 1,5/ 5-PV-3,5 - Direct connector

1016516

<https://www.phoenixcontact.com/pc/products/1016516>



PCB direct plug, nominal cross section: 1.5 mm², color: green, nominal current: 8 A, rated voltage (III/2): 160 V, contact surface: Tin, number of potentials: 10, number of rows: 2, number of positions: 5, number of connections: 10, product range: CDDC 1,5/...-PV, pitch: 3.5 mm, connection method: Crimp connection, mounting: SKEDD - Direct plug-in technology, conductor/PCB connection direction: 90 °, pin layout: Linear pinning, plug-in system: SKEDD, locking: Snap-in locking, mounting: Self-locking flange, type of packaging: packed in cardboard

CDDC 1,5/ 6-PV-3,5 - Direct connector

1016517

<https://www.phoenixcontact.com/pc/products/1016517>



PCB direct plug, nominal cross section: 1.5 mm², color: green, nominal current: 8 A, rated voltage (III/2): 160 V, contact surface: Tin, number of potentials: 12, number of rows: 2, number of positions: 6, number of connections: 12, product range: CDDC 1,5/...-PV, pitch: 3.5 mm, connection method: Crimp connection, mounting: SKEDD - Direct plug-in technology, conductor/PCB connection direction: 90 °, pin layout: Linear pinning, plug-in system: SKEDD, locking: Snap-in locking, mounting: Self-locking flange, type of packaging: packed in cardboard

CDC-MP 0,5-1,5 - Crimp contact

1016662

<https://www.phoenixcontact.com/pc/products/1016662>



CDDC 1,5/ 7-PV-3,5 - Direct connector

1016518

<https://www.phoenixcontact.com/pc/products/1016518>

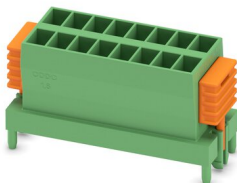


PCB direct plug, nominal cross section: 1.5 mm², color: green, nominal current: 8 A, rated voltage (III/2): 160 V, contact surface: Tin, number of potentials: 14, number of rows: 2, number of positions: 7, number of connections: 14, product range: CDDC 1,5/...-PV, pitch: 3.5 mm, connection method: Crimp connection, mounting: SKEDD - Direct plug-in technology, conductor/PCB connection direction: 90 °, pin layout: Linear pinning, plug-in system: SKEDD, locking: Snap-in locking, mounting: Self-locking flange, type of packaging: packed in cardboard

CDDC 1,5/ 8-PV-3,5 - Direct connector

1016519

<https://www.phoenixcontact.com/pc/products/1016519>



PCB direct plug, nominal cross section: 1.5 mm², color: green, nominal current: 8 A, rated voltage (III/2): 160 V, contact surface: Tin, number of potentials: 16, number of rows: 2, number of positions: 8, number of connections: 16, product range: CDDC 1,5/...-PV, pitch: 3.5 mm, connection method: Crimp connection, mounting: SKEDD - Direct plug-in technology, conductor/PCB connection direction: 90 °, pin layout: Linear pinning, plug-in system: SKEDD, locking: Snap-in locking, mounting: Self-locking flange, type of packaging: packed in cardboard

CDC-MP 0,5-1,5 - Crimp contact

1016662

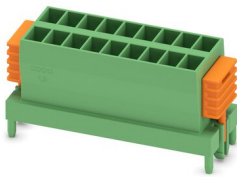
<https://www.phoenixcontact.com/pc/products/1016662>



CDDC 1,5/ 9-PV-3,5 - Direct connector

1016520

<https://www.phoenixcontact.com/pc/products/1016520>



PCB direct plug, nominal cross section: 1.5 mm², color: green, nominal current: 8 A, rated voltage (III/2): 160 V, contact surface: Tin, number of potentials: 18, number of rows: 2, number of positions: 9, number of connections: 18, product range: CDDC 1,5/...-PV, pitch: 3.5 mm, connection method: Crimp connection, mounting: SKEDD - Direct plug-in technology, conductor/PCB connection direction: 90 °, pin layout: Linear pinning, plug-in system: SKEDD, locking: Snap-in locking, mounting: Self-locking flange, type of packaging: packed in cardboard

CDDC 1,5/10-PV-3,5 - Direct connector

1016521

<https://www.phoenixcontact.com/pc/products/1016521>



PCB direct plug, nominal cross section: 1.5 mm², color: green, nominal current: 8 A, rated voltage (III/2): 160 V, contact surface: Tin, number of potentials: 20, number of rows: 2, number of positions: 10, number of connections: 20, product range: CDDC 1,5/...-PV, pitch: 3.5 mm, connection method: Crimp connection, mounting: SKEDD - Direct plug-in technology, conductor/PCB connection direction: 90 °, pin layout: Linear pinning, plug-in system: SKEDD, locking: Snap-in locking, mounting: Self-locking flange, type of packaging: packed in cardboard

CDC-MP 0,5-1,5 - Crimp contact

1016662

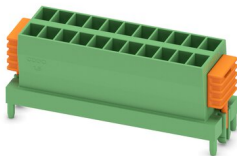
<https://www.phoenixcontact.com/pc/products/1016662>



CDDC 1,5/11-PV-3,5 - Direct connector

1016510

<https://www.phoenixcontact.com/pc/products/1016510>

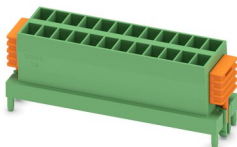


PCB direct plug, nominal cross section: 1.5 mm², color: green, nominal current: 8 A, rated voltage (III/2): 160 V, contact surface: Tin, number of potentials: 22, number of rows: 2, number of positions: 11, number of connections: 22, product range: CDDC 1,5/...-PV, pitch: 3.5 mm, connection method: Crimp connection, mounting: SKEDD - Direct plug-in technology, conductor/PCB connection direction: 90 °, pin layout: Linear pinning, plug-in system: SKEDD, locking: Snap-in locking, mounting: Self-locking flange, type of packaging: packed in cardboard

CDDC 1,5/12-PV-3,5 - Direct connector

1016522

<https://www.phoenixcontact.com/pc/products/1016522>



PCB direct plug, nominal cross section: 1.5 mm², color: green, nominal current: 8 A, rated voltage (III/2): 160 V, contact surface: Tin, number of potentials: 24, number of rows: 2, number of positions: 12, number of connections: 24, product range: CDDC 1,5/...-PV, pitch: 3.5 mm, connection method: Crimp connection, mounting: SKEDD - Direct plug-in technology, conductor/PCB connection direction: 90 °, pin layout: Linear pinning, plug-in system: SKEDD, locking: Snap-in locking, mounting: Self-locking flange, type of packaging: packed in cardboard

CDC-MP 0,5-1,5 - Crimp contact

1016662

<https://www.phoenixcontact.com/pc/products/1016662>



CDDC 1,5/13-PV-3,5 - Direct connector

1016523

<https://www.phoenixcontact.com/pc/products/1016523>

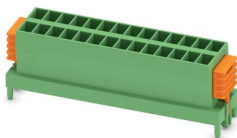


PCB direct plug, nominal cross section: 1.5 mm², color: green, nominal current: 8 A, rated voltage (III/2): 160 V, contact surface: Tin, number of potentials: 26, number of rows: 2, number of positions: 13, number of connections: 26, product range: CDDC 1,5/...-PV, pitch: 3.5 mm, connection method: Crimp connection, mounting: SKEDD - Direct plug-in technology, conductor/PCB connection direction: 90 °, pin layout: Linear pinning, plug-in system: SKEDD, locking: Snap-in locking, mounting: Self-locking flange, type of packaging: packed in cardboard

CDDC 1,5/14-PV-3,5 - Direct connector

1016524

<https://www.phoenixcontact.com/pc/products/1016524>



PCB direct plug, nominal cross section: 1.5 mm², color: green, nominal current: 8 A, rated voltage (III/2): 160 V, contact surface: Tin, number of potentials: 28, number of rows: 2, number of positions: 14, number of connections: 28, product range: CDDC 1,5/...-PV, pitch: 3.5 mm, connection method: Crimp connection, mounting: SKEDD - Direct plug-in technology, conductor/PCB connection direction: 90 °, pin layout: Linear pinning, plug-in system: SKEDD, locking: Snap-in locking, mounting: Self-locking flange, type of packaging: packed in cardboard

CDC-MP 0,5-1,5 - Crimp contact

1016662

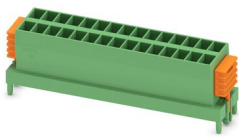
<https://www.phoenixcontact.com/pc/products/1016662>



CDDC 1,5/15-PV-3,5 - Direct connector

1016525

<https://www.phoenixcontact.com/pc/products/1016525>



PCB direct plug, nominal cross section: 1.5 mm², color: green, nominal current: 8 A, rated voltage (III/2): 160 V, contact surface: Tin, number of potentials: 30, number of rows: 2, number of positions: 15, number of connections: 30, product range: CDDC 1,5/...-PV, pitch: 3.5 mm, connection method: Crimp connection, mounting: SKEDD - Direct plug-in technology, conductor/PCB connection direction: 90 °, pin layout: Linear pinning, plug-in system: SKEDD, locking: Snap-in locking, mounting: Self-locking flange, type of packaging: packed in cardboard

CDDC 1,5/16-PV-3,5 - Direct connector

1016526

<https://www.phoenixcontact.com/pc/products/1016526>



PCB direct plug, nominal cross section: 1.5 mm², color: green, nominal current: 8 A, rated voltage (III/2): 160 V, contact surface: Tin, number of potentials: 32, number of rows: 2, number of positions: 16, number of connections: 32, product range: CDDC 1,5/...-PV, pitch: 3.5 mm, connection method: Crimp connection, mounting: SKEDD - Direct plug-in technology, conductor/PCB connection direction: 90 °, pin layout: Linear pinning, plug-in system: SKEDD, locking: Snap-in locking, mounting: Self-locking flange, type of packaging: packed in cardboard

CDC-MP 0,5-1,5 - Crimp contact

1016662

<https://www.phoenixcontact.com/pc/products/1016662>



CDDC 2,5/ 2-PV-5,0 - Direct connector

1016293

<https://www.phoenixcontact.com/pc/products/1016293>



PCB direct plug, nominal cross section: 2.5 mm², color: green, nominal current: 12 A, rated voltage (III/2): 320 V, contact surface: Tin, number of potentials: 4, number of rows: 2, number of positions: 2, number of connections: 4, product range: CDDC 2,5/...-PV, pitch: 5 mm, connection method: Crimp connection, mounting: SKEDD - Direct plug-in technology, conductor/PCB connection direction: 90 °, pin layout: Linear pinning, plug-in system: SKEDD, locking: Snap-in locking, mounting: Self-locking flange, type of packaging: packed in cardboard

CDDC 2,5/ 3-PV-5,0 - Direct connector

1016292

<https://www.phoenixcontact.com/pc/products/1016292>



PCB direct plug, nominal cross section: 2.5 mm², color: green, nominal current: 12 A, rated voltage (III/2): 320 V, contact surface: Tin, number of potentials: 6, number of rows: 2, number of positions: 3, number of connections: 6, product range: CDDC 2,5/...-PV, pitch: 5 mm, connection method: Crimp connection, mounting: SKEDD - Direct plug-in technology, conductor/PCB connection direction: 90 °, pin layout: Linear pinning, plug-in system: SKEDD, locking: Snap-in locking, mounting: Self-locking flange, type of packaging: packed in cardboard

CDC-MP 0,5-1,5 - Crimp contact

1016662

<https://www.phoenixcontact.com/pc/products/1016662>



CDDC 2,5/ 4-PV-5,0 - Direct connector

1016290

<https://www.phoenixcontact.com/pc/products/1016290>



PCB direct plug, nominal cross section: 2.5 mm², color: green, nominal current: 12 A, rated voltage (III/2): 320 V, contact surface: Tin, number of potentials: 8, number of rows: 2, number of positions: 4, number of connections: 8, product range: CDDC 2,5/...-PV, pitch: 5 mm, connection method: Crimp connection, mounting: SKEDD - Direct plug-in technology, conductor/PCB connection direction: 90 °, pin layout: Linear pinning, plug-in system: SKEDD, locking: Snap-in locking, mounting: Self-locking flange, type of packaging: packed in cardboard

CDDC 2,5/ 5-PV-5,0 - Direct connector

1016289

<https://www.phoenixcontact.com/pc/products/1016289>



PCB direct plug, nominal cross section: 2.5 mm², color: green, nominal current: 12 A, rated voltage (III/2): 320 V, contact surface: Tin, number of potentials: 10, number of rows: 2, number of positions: 5, number of connections: 10, product range: CDDC 2,5/...-PV, pitch: 5 mm, connection method: Crimp connection, mounting: SKEDD - Direct plug-in technology, conductor/PCB connection direction: 90 °, pin layout: Linear pinning, plug-in system: SKEDD, locking: Snap-in locking, mounting: Self-locking flange, type of packaging: packed in cardboard

CDC-MP 0,5-1,5 - Crimp contact

1016662

<https://www.phoenixcontact.com/pc/products/1016662>



CDDC 2,5/ 6-PV-5,0 - Direct connector

1016288

<https://www.phoenixcontact.com/pc/products/1016288>



PCB direct plug, nominal cross section: 2.5 mm², color: green, nominal current: 12 A, rated voltage (III/2): 320 V, contact surface: Tin, number of potentials: 12, number of rows: 2, number of positions: 6, number of connections: 12, product range: CDDC 2,5/...-PV, pitch: 5 mm, connection method: Crimp connection, mounting: SKEDD - Direct plug-in technology, conductor/PCB connection direction: 90 °, pin layout: Linear pinning, plug-in system: SKEDD, locking: Snap-in locking, mounting: Self-locking flange, type of packaging: packed in cardboard

CDDC 2,5/ 7-PV-5,0 - Direct connector

1016286

<https://www.phoenixcontact.com/pc/products/1016286>



PCB direct plug, nominal cross section: 2.5 mm², color: green, nominal current: 12 A, rated voltage (III/2): 320 V, contact surface: Tin, number of potentials: 14, number of rows: 2, number of positions: 7, number of connections: 14, product range: CDDC 2,5/...-PV, pitch: 5 mm, connection method: Crimp connection, mounting: SKEDD - Direct plug-in technology, conductor/PCB connection direction: 90 °, pin layout: Linear pinning, plug-in system: SKEDD, locking: Snap-in locking, mounting: Self-locking flange, type of packaging: packed in cardboard

CDC-MP 0,5-1,5 - Crimp contact

1016662

<https://www.phoenixcontact.com/pc/products/1016662>



CDDC 2,5/ 8-PV-5,0 - Direct connector

1016285

<https://www.phoenixcontact.com/pc/products/1016285>

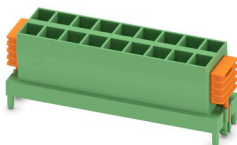


PCB direct plug, nominal cross section: 2.5 mm², color: green, nominal current: 12 A, rated voltage (III/2): 320 V, contact surface: Tin, number of potentials: 16, number of rows: 2, number of positions: 8, number of connections: 16, product range: CDDC 2,5/...-PV, pitch: 5 mm, connection method: Crimp connection, mounting: SKEDD - Direct plug-in technology, conductor/PCB connection direction: 90 °, plug-in system: SKEDD, locking: Snap-in locking, mounting: Self-locking flange, type of packaging: packed in cardboard

CDDC 2,5/ 9-PV-5,0 - Direct connector

1016280

<https://www.phoenixcontact.com/pc/products/1016280>



PCB direct plug, nominal cross section: 2.5 mm², color: green, nominal current: 12 A, rated voltage (III/2): 320 V, contact surface: Tin, number of potentials: 18, number of rows: 2, number of positions: 9, number of connections: 18, product range: CDDC 2,5/...-PV, pitch: 5 mm, connection method: Crimp connection, mounting: SKEDD - Direct plug-in technology, conductor/PCB connection direction: 90 °, plug-in system: SKEDD, locking: Snap-in locking, mounting: Self-locking flange, type of packaging: packed in cardboard

CDC-MP 0,5-1,5 - Crimp contact

1016662

<https://www.phoenixcontact.com/pc/products/1016662>



CDDC 2,5/10-PV-5,0 - Direct connector

1016279

<https://www.phoenixcontact.com/pc/products/1016279>

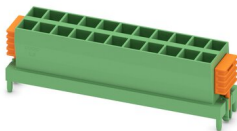


PCB direct plug, nominal cross section: 2.5 mm², color: green, nominal current: 12 A, rated voltage (III/2): 320 V, contact surface: Tin, number of potentials: 20, number of rows: 2, number of positions: 10, number of connections: 20, product range: CDDC 2,5/...-PV, pitch: 5 mm, connection method: Crimp connection, mounting: SKEDD - Direct plug-in technology, conductor/PCB connection direction: 90 °, plug-in system: SKEDD, locking: Snap-in locking, mounting: Self-locking flange, type of packaging: packed in cardboard

CDDC 2,5/11-PV-5,0 - Direct connector

1016278

<https://www.phoenixcontact.com/pc/products/1016278>



PCB direct plug, nominal cross section: 2.5 mm², color: green, nominal current: 12 A, rated voltage (III/2): 320 V, contact surface: Tin, number of potentials: 22, number of rows: 2, number of positions: 11, number of connections: 22, product range: CDDC 2,5/...-PV, pitch: 5 mm, connection method: Crimp connection, mounting: SKEDD - Direct plug-in technology, conductor/PCB connection direction: 90 °, plug-in system: SKEDD, locking: Snap-in locking, mounting: Self-locking flange, type of packaging: packed in cardboard

CDC-MP 0,5-1,5 - Crimp contact

1016662

<https://www.phoenixcontact.com/pc/products/1016662>



CDDC 2,5/12-PV-5,0 - Direct connector

1016277

<https://www.phoenixcontact.com/pc/products/1016277>



PCB direct plug, nominal cross section: 2.5 mm², color: green, nominal current: 12 A, rated voltage (III/2): 320 V, contact surface: Tin, number of potentials: 24, number of rows: 2, number of positions: 12, number of connections: 24, product range: CDDC 2,5/...-PV, pitch: 5 mm, connection method: Crimp connection, mounting: SKEDD - Direct plug-in technology, conductor/PCB connection direction: 90 °, plug-in system: SKEDD, locking: Snap-in locking, mounting: Self-locking flange, type of packaging: packed in cardboard

CDDC 2,5/13-PV-5,0 - Direct connector

1016276

<https://www.phoenixcontact.com/pc/products/1016276>



PCB direct plug, nominal cross section: 2.5 mm², color: green, nominal current: 12 A, rated voltage (III/2): 320 V, contact surface: Tin, number of potentials: 26, number of rows: 2, number of positions: 13, number of connections: 26, product range: CDDC 2,5/...-PV, pitch: 5 mm, connection method: Crimp connection, mounting: SKEDD - Direct plug-in technology, conductor/PCB connection direction: 90 °, plug-in system: SKEDD, locking: Snap-in locking, mounting: Self-locking flange, type of packaging: packed in cardboard

CDC-MP 0,5-1,5 - Crimp contact

1016662

<https://www.phoenixcontact.com/pc/products/1016662>



CDDC 2,5/14-PV-5,0 - Direct connector

1016274

<https://www.phoenixcontact.com/pc/products/1016274>



PCB direct plug, nominal cross section: 2.5 mm², color: green, nominal current: 12 A, rated voltage (III/2): 320 V, contact surface: Tin, number of potentials: 28, number of rows: 2, number of positions: 14, number of connections: 28, product range: CDDC 2,5/...-PV, pitch: 5 mm, connection method: Crimp connection, mounting: SKEDD - Direct plug-in technology, conductor/PCB connection direction: 90 °, plug-in system: SKEDD, locking: Snap-in locking, mounting: Self-locking flange, type of packaging: packed in cardboard

CDDC 2,5/15-PV-5,0 - Direct connector

1016273

<https://www.phoenixcontact.com/pc/products/1016273>



PCB direct plug, nominal cross section: 2.5 mm², color: green, nominal current: 12 A, rated voltage (III/2): 320 V, contact surface: Tin, number of potentials: 30, number of rows: 2, number of positions: 15, number of connections: 30, product range: CDDC 2,5/...-PV, pitch: 5 mm, connection method: Crimp connection, mounting: SKEDD - Direct plug-in technology, conductor/PCB connection direction: 90 °, plug-in system: SKEDD, locking: Snap-in locking, mounting: Self-locking flange, type of packaging: packed in cardboard

CDC-MP 0,5-1,5 - Crimp contact

1016662

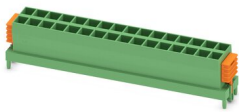
<https://www.phoenixcontact.com/pc/products/1016662>



CDDC 2,5/16-PV-5,0 - Direct connector

1016272

<https://www.phoenixcontact.com/pc/products/1016272>



PCB direct plug, nominal cross section: 2.5 mm², color: green, nominal current: 12 A, rated voltage (III/2): 320 V, contact surface: Tin, number of potentials: 32, number of rows: 2, number of positions: 16, number of connections: 32, product range: CDDC 2,5/...-PV, pitch: 5 mm, connection method: Crimp connection, mounting: SKEDD - Direct plug-in technology, conductor/PCB connection direction: 90 °, plug-in system: SKEDD, locking: Snap-in locking, mounting: Self-locking flange, type of packaging: packed in cardboard

Phoenix Contact 2023 © - all rights reserved

<https://www.phoenixcontact.com>

PHOENIX CONTACT GmbH & Co. KG

Flachsmarktstraße 8

D-32825 Blomberg

+49 (0) 5235-3 00

info@phoenixcontact.com