

# CDC-MP 1,5-2,5-R - Crimp contact

1016659

<https://www.phoenixcontact.com/us/products/1016659>



Please be informed that the data shown in this PDF document is generated from our online catalog. Please find the complete data in the user documentation. Our general terms of use for downloads are valid.



Crimp contact

## Commercial data

Item number	1016659
Packing unit	1 pc
Minimum order quantity	3,000 pc
Note	Made to order (non-returnable)
Sales key	AA03
Product key	AACDCA
GTIN	4055626498645
Weight per piece (including packing)	2.22 g
Weight per piece (excluding packing)	0.21 g
Customs tariff number	85366990
Country of origin	DE

# CDC-MP 1,5-2,5-R - Crimp contact

1016659

<https://www.phoenixcontact.com/us/products/1016659>



## Technical data

### Notes

General	The crimp contacts may only be processed with approved crimping tools.
General	You can find ordering information for the approved crimping tool for automated conductor connections in the installation instructions in the Downloads section.
General	The crimp heights depend on the crimping tool used. You can find the values in the tool documentation.

### Mounting

Connection method	Crimp connection
-------------------	------------------

### Product properties

Product type	Crimp contact
Product family	CDC-MP

### Connection data

Connection method	Crimp connection
Contact connection type	Socket
Stripping length	4 mm
Conductor cross section flexible	1.5 mm <sup>2</sup> ... 2.5 mm <sup>2</sup>
Conductor cross section AWG	16 ... 14

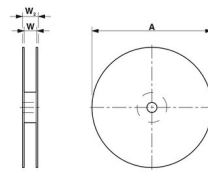
### Material specifications

Contact surface	Tin Sn
Contact surface material	Tin
Metal surface terminal point (top layer)	Tin (2 - 4 µm Sn)
Metal surface contact area (top layer)	Tin (2 - 4 µm Sn)

### Electrical properties

Nominal current I <sub>N</sub>	12 A
--------------------------------	------

### Packaging specifications

Dimensional drawing	
Type of packaging	Belt

# CDC-MP 1,5-2,5-R - Crimp contact

1016659

<https://www.phoenixcontact.com/us/products/1016659>



## Classifications

### ECLASS

ECLASS-11.0	27460403
ECLASS-12.0	27460403
ECLASS-13.0	27460403

### ETIM

ETIM 8.0	EC000796
----------	----------

### UNSPSC

UNSPSC 21.0	39121500
-------------	----------

# CDC-MP 1,5-2,5-R - Crimp contact

1016659

<https://www.phoenixcontact.com/us/products/1016659>



## Environmental product compliance

China RoHS	Environmentally friendly use period: unlimited = EFUP-e
	No hazardous substances above threshold values

# CDC-MP 1,5-2,5-R - Crimp contact

1016659

<https://www.phoenixcontact.com/us/products/1016659>



## Accessories

### CDDC 2,5/ 2-PV-5,0 - Direct connector

1016293

<https://www.phoenixcontact.com/us/products/1016293>



PCB direct plug, nominal cross section: 2.5 mm<sup>2</sup>, color: green, nominal current: 12 A, rated voltage (III/2): 320 V, contact surface: Tin, number of potentials: 4, number of rows: 2, number of positions: 2, number of connections: 4, product range: CDDC 2,5/...-PV, pitch: 5 mm, connection method: Crimp connection, mounting: SKEDD - Direct plug-in technology, conductor/PCB connection direction: 90 °, pin layout: Linear pinning, plug-in system: SKEDD, locking: Snap-in locking, mounting: Self-locking flange, type of packaging: packed in cardboard

---

### CDDC 2,5/ 3-PV-5,0 - Direct connector

1016292

<https://www.phoenixcontact.com/us/products/1016292>



PCB direct plug, nominal cross section: 2.5 mm<sup>2</sup>, color: green, nominal current: 12 A, rated voltage (III/2): 320 V, contact surface: Tin, number of potentials: 6, number of rows: 2, number of positions: 3, number of connections: 6, product range: CDDC 2,5/...-PV, pitch: 5 mm, connection method: Crimp connection, mounting: SKEDD - Direct plug-in technology, conductor/PCB connection direction: 90 °, pin layout: Linear pinning, plug-in system: SKEDD, locking: Snap-in locking, mounting: Self-locking flange, type of packaging: packed in cardboard

# CDC-MP 1,5-2,5-R - Crimp contact

1016659

<https://www.phoenixcontact.com/us/products/1016659>



## CDDC 2,5/ 4-PV-5,0 - Direct connector

1016290

<https://www.phoenixcontact.com/us/products/1016290>



PCB direct plug, nominal cross section: 2.5 mm<sup>2</sup>, color: green, nominal current: 12 A, rated voltage (III/2): 320 V, contact surface: Tin, number of potentials: 8, number of rows: 2, number of positions: 4, number of connections: 8, product range: CDDC 2,5/...-PV, pitch: 5 mm, connection method: Crimp connection, mounting: SKEDD - Direct plug-in technology, conductor/PCB connection direction: 90 °, pin layout: Linear pinning, plug-in system: SKEDD, locking: Snap-in locking, mounting: Self-locking flange, type of packaging: packed in cardboard

## CDDC 2,5/ 5-PV-5,0 - Direct connector

1016289

<https://www.phoenixcontact.com/us/products/1016289>



PCB direct plug, nominal cross section: 2.5 mm<sup>2</sup>, color: green, nominal current: 12 A, rated voltage (III/2): 320 V, contact surface: Tin, number of potentials: 10, number of rows: 2, number of positions: 5, number of connections: 10, product range: CDDC 2,5/...-PV, pitch: 5 mm, connection method: Crimp connection, mounting: SKEDD - Direct plug-in technology, conductor/PCB connection direction: 90 °, pin layout: Linear pinning, plug-in system: SKEDD, locking: Snap-in locking, mounting: Self-locking flange, type of packaging: packed in cardboard

# CDC-MP 1,5-2,5-R - Crimp contact

1016659

<https://www.phoenixcontact.com/us/products/1016659>



## CDDC 2,5/ 6-PV-5,0 - Direct connector

1016288

<https://www.phoenixcontact.com/us/products/1016288>



PCB direct plug, nominal cross section: 2.5 mm<sup>2</sup>, color: green, nominal current: 12 A, rated voltage (III/2): 320 V, contact surface: Tin, number of potentials: 12, number of rows: 2, number of positions: 6, number of connections: 12, product range: CDDC 2,5/...-PV, pitch: 5 mm, connection method: Crimp connection, mounting: SKEDD - Direct plug-in technology, conductor/PCB connection direction: 90 °, pin layout: Linear pinning, plug-in system: SKEDD, locking: Snap-in locking, mounting: Self-locking flange, type of packaging: packed in cardboard

---

## CDDC 2,5/ 7-PV-5,0 - Direct connector

1016286

<https://www.phoenixcontact.com/us/products/1016286>



PCB direct plug, nominal cross section: 2.5 mm<sup>2</sup>, color: green, nominal current: 12 A, rated voltage (III/2): 320 V, contact surface: Tin, number of potentials: 14, number of rows: 2, number of positions: 7, number of connections: 14, product range: CDDC 2,5/...-PV, pitch: 5 mm, connection method: Crimp connection, mounting: SKEDD - Direct plug-in technology, conductor/PCB connection direction: 90 °, pin layout: Linear pinning, plug-in system: SKEDD, locking: Snap-in locking, mounting: Self-locking flange, type of packaging: packed in cardboard

# CDC-MP 1,5-2,5-R - Crimp contact

1016659

<https://www.phoenixcontact.com/us/products/1016659>



## CDDC 2,5/ 8-PV-5,0 - Direct connector

1016285

<https://www.phoenixcontact.com/us/products/1016285>



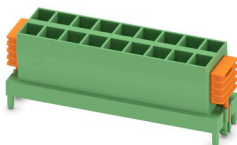
PCB direct plug, nominal cross section: 2.5 mm<sup>2</sup>, color: green, nominal current: 12 A, rated voltage (III/2): 320 V, contact surface: Tin, number of potentials: 16, number of rows: 2, number of positions: 8, number of connections: 16, product range: CDDC 2,5/...-PV, pitch: 5 mm, connection method: Crimp connection, mounting: SKEDD - Direct plug-in technology, conductor/PCB connection direction: 90 °, plug-in system: SKEDD, locking: Snap-in locking, mounting: Self-locking flange, type of packaging: packed in cardboard

---

## CDDC 2,5/ 9-PV-5,0 - Direct connector

1016280

<https://www.phoenixcontact.com/us/products/1016280>



PCB direct plug, nominal cross section: 2.5 mm<sup>2</sup>, color: green, nominal current: 12 A, rated voltage (III/2): 320 V, contact surface: Tin, number of potentials: 18, number of rows: 2, number of positions: 9, number of connections: 18, product range: CDDC 2,5/...-PV, pitch: 5 mm, connection method: Crimp connection, mounting: SKEDD - Direct plug-in technology, conductor/PCB connection direction: 90 °, plug-in system: SKEDD, locking: Snap-in locking, mounting: Self-locking flange, type of packaging: packed in cardboard



# CDC-MP 1,5-2,5-R - Crimp contact

1016659

<https://www.phoenixcontact.com/us/products/1016659>



## CDDC 2,5/10-PV-5,0 - Direct connector

1016279

<https://www.phoenixcontact.com/us/products/1016279>



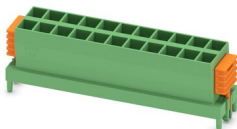
PCB direct plug, nominal cross section: 2.5 mm<sup>2</sup>, color: green, nominal current: 12 A, rated voltage (III/2): 320 V, contact surface: Tin, number of potentials: 20, number of rows: 2, number of positions: 10, number of connections: 20, product range: CDDC 2,5/...-PV, pitch: 5 mm, connection method: Crimp connection, mounting: SKEDD - Direct plug-in technology, conductor/PCB connection direction: 90 °, plug-in system: SKEDD, locking: Snap-in locking, mounting: Self-locking flange, type of packaging: packed in cardboard

---

## CDDC 2,5/11-PV-5,0 - Direct connector

1016278

<https://www.phoenixcontact.com/us/products/1016278>



PCB direct plug, nominal cross section: 2.5 mm<sup>2</sup>, color: green, nominal current: 12 A, rated voltage (III/2): 320 V, contact surface: Tin, number of potentials: 22, number of rows: 2, number of positions: 11, number of connections: 22, product range: CDDC 2,5/...-PV, pitch: 5 mm, connection method: Crimp connection, mounting: SKEDD - Direct plug-in technology, conductor/PCB connection direction: 90 °, plug-in system: SKEDD, locking: Snap-in locking, mounting: Self-locking flange, type of packaging: packed in cardboard

## CDC-MP 1,5-2,5-R - Crimp contact

1016659

<https://www.phoenixcontact.com/us/products/1016659>



### CDDC 2,5/12-PV-5,0 - Direct connector

1016277

<https://www.phoenixcontact.com/us/products/1016277>



PCB direct plug, nominal cross section: 2.5 mm<sup>2</sup>, color: green, nominal current: 12 A, rated voltage (III/2): 320 V, contact surface: Tin, number of potentials: 24, number of rows: 2, number of positions: 12, number of connections: 24, product range: CDDC 2,5/...-PV, pitch: 5 mm, connection method: Crimp connection, mounting: SKEDD - Direct plug-in technology, conductor/PCB connection direction: 90 °, plug-in system: SKEDD, locking: Snap-in locking, mounting: Self-locking flange, type of packaging: packed in cardboard

---

### CDDC 2,5/13-PV-5,0 - Direct connector

1016276

<https://www.phoenixcontact.com/us/products/1016276>



PCB direct plug, nominal cross section: 2.5 mm<sup>2</sup>, color: green, nominal current: 12 A, rated voltage (III/2): 320 V, contact surface: Tin, number of potentials: 26, number of rows: 2, number of positions: 13, number of connections: 26, product range: CDDC 2,5/...-PV, pitch: 5 mm, connection method: Crimp connection, mounting: SKEDD - Direct plug-in technology, conductor/PCB connection direction: 90 °, plug-in system: SKEDD, locking: Snap-in locking, mounting: Self-locking flange, type of packaging: packed in cardboard

# CDC-MP 1,5-2,5-R - Crimp contact

1016659

<https://www.phoenixcontact.com/us/products/1016659>



## CDDC 2,5/14-PV-5,0 - Direct connector

1016274

<https://www.phoenixcontact.com/us/products/1016274>



PCB direct plug, nominal cross section: 2.5 mm<sup>2</sup>, color: green, nominal current: 12 A, rated voltage (III/2): 320 V, contact surface: Tin, number of potentials: 28, number of rows: 2, number of positions: 14, number of connections: 28, product range: CDDC 2,5/...-PV, pitch: 5 mm, connection method: Crimp connection, mounting: SKEDD - Direct plug-in technology, conductor/PCB connection direction: 90 °, plug-in system: SKEDD, locking: Snap-in locking, mounting: Self-locking flange, type of packaging: packed in cardboard

---

## CDDC 2,5/15-PV-5,0 - Direct connector

1016273

<https://www.phoenixcontact.com/us/products/1016273>



PCB direct plug, nominal cross section: 2.5 mm<sup>2</sup>, color: green, nominal current: 12 A, rated voltage (III/2): 320 V, contact surface: Tin, number of potentials: 30, number of rows: 2, number of positions: 15, number of connections: 30, product range: CDDC 2,5/...-PV, pitch: 5 mm, connection method: Crimp connection, mounting: SKEDD - Direct plug-in technology, conductor/PCB connection direction: 90 °, plug-in system: SKEDD, locking: Snap-in locking, mounting: Self-locking flange, type of packaging: packed in cardboard

# CDC-MP 1,5-2,5-R - Crimp contact

1016659

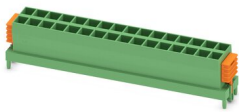
<https://www.phoenixcontact.com/us/products/1016659>



## CDDC 2,5/16-PV-5,0 - Direct connector

1016272

<https://www.phoenixcontact.com/us/products/1016272>



PCB direct plug, nominal cross section: 2.5 mm<sup>2</sup>, color: green, nominal current: 12 A, rated voltage (III/2): 320 V, contact surface: Tin, number of potentials: 32, number of rows: 2, number of positions: 16, number of connections: 32, product range: CDDC 2,5/...-PV, pitch: 5 mm, connection method: Crimp connection, mounting: SKEDD - Direct plug-in technology, conductor/PCB connection direction: 90 °, plug-in system: SKEDD, locking: Snap-in locking, mounting: Self-locking flange, type of packaging: packed in cardboard

---

Phoenix Contact 2023 © - all rights reserved

<https://www.phoenixcontact.com>

Phoenix Contact USA  
586 Fulling Mill Road  
Middletown, PA 17057, United States  
(+717) 944-1300  
[info@phoenixcon.com](mailto:info@phoenixcon.com)