

# PTCM-MP-PI 0,34-0,75 - Crimp contact



1013989

<https://www.phoenixcontact.com/us/products/1013989>

Please be informed that the data shown in this PDF document is generated from our online catalog. Please find the complete data in the user documentation. Our general terms of use for downloads are valid.



Crimp contact, nominal current: 6 A, contact connection type: Pin, connection method: Crimp connection, contact surface: Tin, type of packaging: Bulk goods

## Commercial data

Item number	1013989
Packing unit	1 pc
Minimum order quantity	100 pc
Sales key	AA01
Product key	AAACPE
GTIN	4055626492957
Weight per piece (including packing)	0.435 g
Weight per piece (excluding packing)	0.4 g
Customs tariff number	85366990
Country of origin	DE

# PTCM-MP-PI 0,34-0,75 - Crimp contact



1013989

<https://www.phoenixcontact.com/us/products/1013989>

## Technical data

### Mounting

Connection method	Crimp connection
-------------------	------------------

### Product properties

Product type	Crimp contact
Product family	PTCM-MP-PI
Pitch	0 mm

### Connection data

Connection method	Crimp connection
Contact connection type	Pin
Stripping length	4.1 mm ... 4.5 mm
Conductor cross section flexible	0.34 mm <sup>2</sup> ... 0.75 mm <sup>2</sup>
Conductor cross section AWG	22 ... 18

### Material specifications

Contact surface	Tin Sn
Contact surface material	Tin
Metal surface terminal point (top layer)	Tin (4 - 8 µm Sn)
Metal surface contact area (top layer)	Tin (4 - 8 µm Sn)

### Dimensions

Pitch	0 mm
-------	------

### Electrical properties

Nominal current I <sub>N</sub>	6 A
--------------------------------	-----

### Packaging specifications

Type of packaging	Bulk goods
-------------------	------------

# PTCM-MP-PI 0,34-0,75 - Crimp contact

1013989

<https://www.phoenixcontact.com/us/products/1013989>



## Approvals

🔗 To download certificates, visit the product detail page: <https://www.phoenixcontact.com/us/products/1013989>



**EAC**

Approval ID: B.01687

# PTCM-MP-PI 0,34-0,75 - Crimp contact



1013989

<https://www.phoenixcontact.com/us/products/1013989>

## Classifications

### ECLASS

ECLASS-11.0	27460403
ECLASS-12.0	27460403
ECLASS-13.0	27460403

### ETIM

ETIM 8.0	EC000796
----------	----------

### UNSPSC

UNSPSC 21.0	39121500
-------------	----------

# PTCM-MP-PI 0,34-0,75 - Crimp contact



1013989

<https://www.phoenixcontact.com/us/products/1013989>

## Environmental product compliance

China RoHS	Environmentally friendly use period: unlimited = EFUP-e
	No hazardous substances above threshold values

# PTCM-MP-PI 0,34-0,75 - Crimp contact

1013989

<https://www.phoenixcontact.com/us/products/1013989>



## Accessories

### CRIMPFOX-P CC 0.75 L - Crimping pliers

1064998

<https://www.phoenixcontact.com/us/products/1064998>



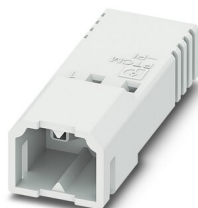
Crimping pliers, for COMBICON crimp connectors with cross section: 0.14 ... 0.75 mm<sup>2</sup>. Unlockable pressure lock, precise parallel crimping, front entry, B crimp, incl. 2 positioning aids

---

### PTCM 0,5/ 2-PI-2,5 WH - Printed-circuit board connector

1015242

<https://www.phoenixcontact.com/us/products/1015242>



PCB connector, nominal cross section: 0.75 mm<sup>2</sup>, color: white, nominal current: 6 A, rated voltage (III/2): 160 V, contact surface: Tin, contact connection type: Pin, number of potentials: 2, number of rows: 1, number of positions: 2, number of connections: 2, product range: PTCM 0,5/...-PI, pitch: 2.5 mm, connection method: Crimp connection, conductor/PCB connection direction: 0 °, plug-in system: COMBICON PTSM, locking: Snap-in locking, mounting: Engagement nose, type of packaging: packed in cardboard

## PTCM-MP-PI 0,34-0,75 - Crimp contact

1013989

<https://www.phoenixcontact.com/us/products/1013989>



## PTCM 0,5/ 3-PI-2,5 WH - Printed-circuit board connector

1015243

<https://www.phoenixcontact.com/us/products/1015243>



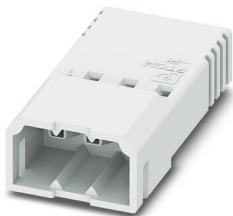
PCB connector, nominal cross section: 0.75 mm<sup>2</sup>, color: white, nominal current: 6 A, rated voltage (III/2): 160 V, contact surface: Tin, contact connection type: Pin, number of potentials: 3, number of rows: 1, number of positions: 3, number of connections: 3, product range: PTCM 0,5/...-PI, pitch: 2.5 mm, connection method: Crimp connection, conductor/PCB connection direction: 0 °, plug-in system: COMBICON PTSM, locking: Snap-in locking, mounting: Engagement nose, type of packaging: packed in cardboard

---

## PTCM 0,5/ 4-PI-2,5 WH - Printed-circuit board connector

1015244

<https://www.phoenixcontact.com/us/products/1015244>



PCB connector, nominal cross section: 0.75 mm<sup>2</sup>, color: white, nominal current: 6 A, rated voltage (III/2): 160 V, contact surface: Tin, contact connection type: Pin, number of potentials: 4, number of rows: 1, number of positions: 4, number of connections: 4, product range: PTCM 0,5/...-PI, pitch: 2.5 mm, connection method: Crimp connection, conductor/PCB connection direction: 0 °, plug-in system: COMBICON PTSM, locking: Snap-in locking, mounting: Engagement nose, type of packaging: packed in cardboard

# PTCM-MP-PI 0,34-0,75 - Crimp contact



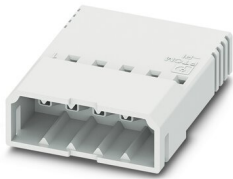
1013989

<https://www.phoenixcontact.com/us/products/1013989>

## PTCM 0,5/ 5-PI-2,5 WH - Printed-circuit board connector

1015245

<https://www.phoenixcontact.com/us/products/1015245>



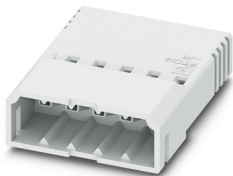
PCB connector, nominal cross section: 0.75 mm<sup>2</sup>, color: white, nominal current: 6 A, rated voltage (III/2): 160 V, contact surface: Tin, contact connection type: Pin, number of potentials: 5, number of rows: 1, number of positions: 5, number of connections: 5, product range: PTCM 0,5/...-PI, pitch: 2.5 mm, connection method: Crimp connection, conductor/PCB connection direction: 0 °, plug-in system: COMBICON PTSM, locking: Snap-in locking, mounting: Engagement nose, type of packaging: packed in cardboard

---

## PTCM 0,5/ 6-PI-2,5 WH - Printed-circuit board connector

1015246

<https://www.phoenixcontact.com/us/products/1015246>



PCB connector, nominal cross section: 0.75 mm<sup>2</sup>, color: white, nominal current: 6 A, rated voltage (III/2): 160 V, contact surface: Tin, contact connection type: Pin, number of potentials: 6, number of rows: 1, number of positions: 6, number of connections: 6, product range: PTCM 0,5/...-PI, pitch: 2.5 mm, connection method: Crimp connection, conductor/PCB connection direction: 0 °, plug-in system: COMBICON PTSM, locking: Snap-in locking, mounting: Engagement nose, type of packaging: packed in cardboard



## PTCM-MP-PI 0,34-0,75 - Crimp contact

1013989

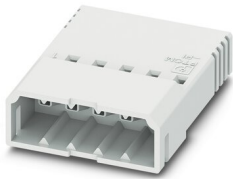
<https://www.phoenixcontact.com/us/products/1013989>



## PTCM 0,5/ 7-PI-2,5 WH - Printed-circuit board connector

1015247

<https://www.phoenixcontact.com/us/products/1015247>



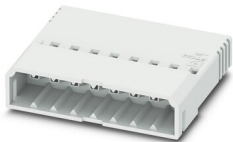
PCB connector, nominal cross section: 0.75 mm<sup>2</sup>, color: white, nominal current: 6 A, rated voltage (III/2): 160 V, contact surface: Tin, contact connection type: Pin, number of potentials: 7, number of rows: 1, number of positions: 7, number of connections: 7, product range: PTCM 0,5/...-PI, pitch: 2.5 mm, connection method: Crimp connection, conductor/PCB connection direction: 0 °, plug-in system: COMBICON PTSM, locking: Snap-in locking, mounting: Engagement nose, type of packaging: packed in cardboard

---

## PTCM 0,5/ 8-PI-2,5 WH - Printed-circuit board connector

1015248

<https://www.phoenixcontact.com/us/products/1015248>



PCB connector, nominal cross section: 0.75 mm<sup>2</sup>, color: white, nominal current: 6 A, rated voltage (III/2): 160 V, contact surface: Tin, contact connection type: Pin, number of potentials: 8, number of rows: 1, number of positions: 8, number of connections: 8, product range: PTCM 0,5/...-PI, pitch: 2.5 mm, connection method: Crimp connection, conductor/PCB connection direction: 0 °, plug-in system: COMBICON PTSM, locking: Snap-in locking, mounting: Engagement nose, type of packaging: packed in cardboard

# PTCM-MP-PI 0,34-0,75 - Crimp contact



1013989

<https://www.phoenixcontact.com/us/products/1013989>

## PTCM 0,5/ 2-PI-2,5 BK - Printed-circuit board connector

1047894

<https://www.phoenixcontact.com/us/products/1047894>



PCB connector, nominal cross section: 0.75 mm<sup>2</sup>, color: black, nominal current: 6 A, rated voltage (III/2): 160 V, contact surface: Tin, contact connection type: Pin, number of potentials: 2, number of rows: 1, number of positions: 2, number of connections: 2, product range: PTCM 0,5/...-PI, pitch: 2.5 mm, connection method: Crimp connection, conductor/PCB connection direction: 0 °, plug-in system: COMBICON PTSM, locking: Snap-in locking, mounting: Engagement nose, type of packaging: packed in cardboard

---

## PTCM 0,5/ 3-PI-2,5 BK - Printed-circuit board connector

1047897

<https://www.phoenixcontact.com/us/products/1047897>



PCB connector, nominal cross section: 0.75 mm<sup>2</sup>, color: black, nominal current: 6 A, rated voltage (III/2): 160 V, contact surface: Tin, contact connection type: Pin, number of potentials: 3, number of rows: 1, number of positions: 3, number of connections: 3, product range: PTCM 0,5/...-PI, pitch: 2.5 mm, connection method: Crimp connection, conductor/PCB connection direction: 0 °, plug-in system: COMBICON PTSM, locking: Snap-in locking, mounting: Engagement nose, type of packaging: packed in cardboard

# PTCM-MP-PI 0,34-0,75 - Crimp contact



1013989

<https://www.phoenixcontact.com/us/products/1013989>

## PTCM 0,5/ 4-PI-2,5 BK - Printed-circuit board connector

1047898

<https://www.phoenixcontact.com/us/products/1047898>



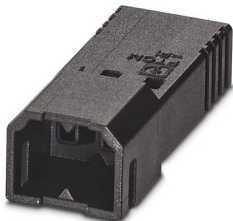
PCB connector, nominal cross section: 0.75 mm<sup>2</sup>, color: black, nominal current: 6 A, rated voltage (III/2): 160 V, contact surface: Tin, contact connection type: Pin, number of potentials: 4, number of rows: 1, number of positions: 4, number of connections: 4, product range: PTCM 0,5/...-PI, pitch: 2.5 mm, connection method: Crimp connection, conductor/PCB connection direction: 0 °, plug-in system: COMBICON PTSM, locking: Snap-in locking, mounting: Engagement nose, type of packaging: packed in cardboard

---

## PTCM 0,5/ 5-PI-2,5 BK - Printed-circuit board connector

1047899

<https://www.phoenixcontact.com/us/products/1047899>



PCB connector, nominal cross section: 0.75 mm<sup>2</sup>, color: black, nominal current: 6 A, rated voltage (III/2): 160 V, contact surface: Tin, contact connection type: Pin, number of potentials: 5, number of rows: 1, number of positions: 5, number of connections: 5, product range: PTCM 0,5/...-PI, pitch: 2.5 mm, connection method: Crimp connection, conductor/PCB connection direction: 0 °, plug-in system: COMBICON PTSM, locking: Snap-in locking, mounting: Engagement nose, type of packaging: packed in cardboard

# PTCM-MP-PI 0,34-0,75 - Crimp contact



1013989

<https://www.phoenixcontact.com/us/products/1013989>

## PTCM 0,5/ 6-PI-2,5 BK - Printed-circuit board connector

1047900

<https://www.phoenixcontact.com/us/products/1047900>



PCB connector, nominal cross section: 0.75 mm<sup>2</sup>, color: black, nominal current: 6 A, rated voltage (III/2): 160 V, contact surface: Tin, contact connection type: Pin, number of potentials: 6, number of rows: 1, number of positions: 6, number of connections: 6, product range: PTCM 0,5/...-PI, pitch: 2.5 mm, connection method: Crimp connection, conductor/PCB connection direction: 0 °, plug-in system: COMBICON PTSM, locking: Snap-in locking, mounting: Engagement nose, type of packaging: packed in cardboard

---

## PTCM 0,5/ 7-PI-2,5 BK - Printed-circuit board connector

1047901

<https://www.phoenixcontact.com/us/products/1047901>



PCB connector, nominal cross section: 0.75 mm<sup>2</sup>, color: black, nominal current: 6 A, rated voltage (III/2): 160 V, contact surface: Tin, contact connection type: Pin, number of potentials: 7, number of rows: 1, number of positions: 7, number of connections: 7, product range: PTCM 0,5/...-PI, pitch: 2.5 mm, connection method: Crimp connection, conductor/PCB connection direction: 0 °, plug-in system: COMBICON PTSM, locking: Snap-in locking, mounting: Engagement nose, type of packaging: packed in cardboard

# PTCM-MP-PI 0,34-0,75 - Crimp contact

1013989

<https://www.phoenixcontact.com/us/products/1013989>



## PTCM 0,5/ 8-PI-2,5 BK - Printed-circuit board connector

1047902

<https://www.phoenixcontact.com/us/products/1047902>



PCB connector, nominal cross section: 0.75 mm<sup>2</sup>, color: black, nominal current: 6 A, rated voltage (III/2): 160 V, contact surface: Tin, contact connection type: Pin, number of potentials: 8, number of rows: 1, number of positions: 8, number of connections: 8, product range: PTCM 0,5/...-PI, pitch: 2.5 mm, connection method: Crimp connection, conductor/PCB connection direction: 0 °, plug-in system: COMBICON PTSM, locking: Snap-in locking, mounting: Engagement nose, type of packaging: packed in cardboard

---

Phoenix Contact 2023 © - all rights reserved

<https://www.phoenixcontact.com>

Phoenix Contact USA  
586 Fulling Mill Road  
Middletown, PA 17057, United States  
(+717) 944-1300  
[info@phoenixcon.com](mailto:info@phoenixcon.com)