

# PTCM-MP-P 0,14-0,5 - Crimp contact



1013781

<https://www.phoenixcontact.com/us/products/1013781>

Please be informed that the data shown in this PDF document is generated from our online catalog. Please find the complete data in the user documentation. Our general terms of use for downloads are valid.



Crimp contact, nominal current: 6 A, contact connection type: Socket, connection method: Crimp connection, contact surface: Tin, type of packaging: Bulk goods

## Commercial data

Item number	1013781
Packing unit	1 pc
Minimum order quantity	100 pc
Sales key	AA01
Product key	AAACPD
GTIN	4055626493213
Weight per piece (including packing)	0.079 g
Weight per piece (excluding packing)	0.065 g
Customs tariff number	85366990
Country of origin	DE

# PTCM-MP-P 0,14-0,5 - Crimp contact



1013781

<https://www.phoenixcontact.com/us/products/1013781>

## Technical data

### Mounting

Connection method	Crimp connection
-------------------	------------------

### Product properties

Product type	Crimp contact
Product family	PTCM-MP-P
Pitch	0 mm

### Connection data

Connection method	Crimp connection
Contact connection type	Socket
Stripping length	4.1 mm ... 4.6 mm
Conductor cross section flexible	0.14 mm <sup>2</sup> ... 0.5 mm <sup>2</sup>
Conductor cross section AWG	26 ... 20

### Material specifications

Contact surface	Tin Sn
Contact surface material	Tin
Metal surface terminal point (top layer)	Tin (4 - 8 µm Sn)
Metal surface contact area (top layer)	Tin (4 - 8 µm Sn)

### Dimensions

Pitch	0 mm
-------	------

### Electrical properties

Nominal current I <sub>N</sub>	6 A
--------------------------------	-----

### Packaging specifications

Type of packaging	Bulk goods
-------------------	------------

# PTCM-MP-P 0,14-0,5 - Crimp contact



1013781

<https://www.phoenixcontact.com/us/products/1013781>

## Approvals

🔗 To download certificates, visit the product detail page: <https://www.phoenixcontact.com/us/products/1013781>



**EAC**

Approval ID: B.01687

# PTCM-MP-P 0,14-0,5 - Crimp contact



1013781

<https://www.phoenixcontact.com/us/products/1013781>

## Classifications

### ECLASS

ECLASS-11.0	27460403
ECLASS-13.0	27460403
ECLASS-12.0	27460403

### ETIM

ETIM 8.0	EC000796
----------	----------

### UNSPSC

UNSPSC 21.0	39121500
-------------	----------

# PTCM-MP-P 0,14-0,5 - Crimp contact



1013781

<https://www.phoenixcontact.com/us/products/1013781>

## Environmental product compliance

China RoHS	Environmentally friendly use period: unlimited = EFUP-e
	No hazardous substances above threshold values

# PTCM-MP-P 0,14-0,5 - Crimp contact

1013781

<https://www.phoenixcontact.com/us/products/1013781>



## Accessories

### CRIMPFOX-P CC 0.75 L - Crimping pliers

1064998

<https://www.phoenixcontact.com/us/products/1064998>



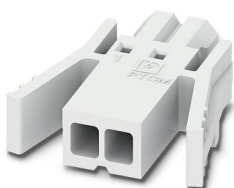
Crimping pliers, for COMBICON crimp connectors with cross section: 0.14 ... 0.75 mm<sup>2</sup>. Unlockable pressure lock, precise parallel crimping, front entry, B crimp, incl. 2 positioning aids

---

### PTCM 0,5/ 2-PL-2,5 WH - Printed-circuit board connector

1015464

<https://www.phoenixcontact.com/us/products/1015464>



PCB connector, nominal cross section: 0.75 mm<sup>2</sup>, color: white, nominal current: 6 A, rated voltage (III/2): 160 V, contact surface: Tin, contact connection type: Socket, number of potentials: 2, number of rows: 1, number of positions: 2, number of connections: 2, product range: PTCM 0,5/...-PL, pitch: 2.5 mm, connection method: Crimp connection, conductor/PCB connection direction: 0 °, plug-in system: COMBICON PTSM, locking: Snap-in locking, mounting: Self-locking flange, type of packaging: packed in cardboard

# PTCM-MP-P 0,14-0,5 - Crimp contact

1013781

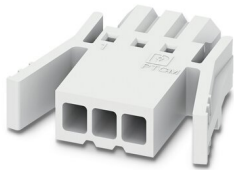
<https://www.phoenixcontact.com/us/products/1013781>



## PTCM 0,5/ 3-PL-2,5 WH - Printed-circuit board connector

1015463

<https://www.phoenixcontact.com/us/products/1015463>



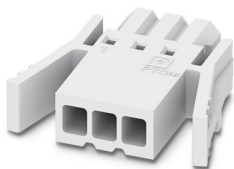
PCB connector, nominal cross section:  $0.75 \text{ mm}^2$ , color: white, nominal current: 6 A, rated voltage (III/2): 160 V, contact surface: Tin, contact connection type: Socket, number of potentials: 3, number of rows: 1, number of positions: 3, number of connections: 3, product range: PTCM 0,5/...-PL, pitch: 2.5 mm, connection method: Crimp connection, conductor/PCB connection direction:  $0^\circ$ , plug-in system: COMBICON PTSM, locking: Snap-in locking, mounting: Self-locking flange, type of packaging: packed in cardboard

---

## PTCM 0,5/ 4-PL-2,5 WH - Printed-circuit board connector

1015462

<https://www.phoenixcontact.com/us/products/1015462>



PCB connector, nominal cross section:  $0.75 \text{ mm}^2$ , color: white, nominal current: 6 A, rated voltage (III/2): 160 V, contact surface: Tin, contact connection type: Socket, number of potentials: 4, number of rows: 1, number of positions: 4, number of connections: 4, product range: PTCM 0,5/...-PL, pitch: 2.5 mm, connection method: Crimp connection, conductor/PCB connection direction:  $0^\circ$ , plug-in system: COMBICON PTSM, locking: Snap-in locking, mounting: Self-locking flange, type of packaging: packed in cardboard

# PTCM-MP-P 0,14-0,5 - Crimp contact

1013781

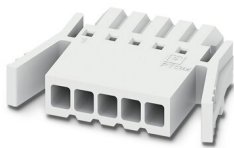
<https://www.phoenixcontact.com/us/products/1013781>



## PTCM 0,5/ 5-PL-2,5 WH - Printed-circuit board connector

1015461

<https://www.phoenixcontact.com/us/products/1015461>



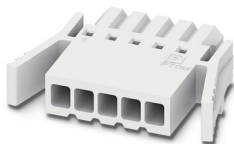
PCB connector, nominal cross section:  $0.75 \text{ mm}^2$ , color: white, nominal current: 6 A, rated voltage (III/2): 160 V, contact surface: Tin, contact connection type: Socket, number of potentials: 5, number of rows: 1, number of positions: 5, number of connections: 5, product range: PTCM 0,5/...-PL, pitch: 2.5 mm, connection method: Crimp connection, conductor/PCB connection direction:  $0^\circ$ , plug-in system: COMBICON PTSM, locking: Snap-in locking, mounting: Self-locking flange, type of packaging: packed in cardboard

---

## PTCM 0,5/ 6-PL-2,5 WH - Printed-circuit board connector

1015460

<https://www.phoenixcontact.com/us/products/1015460>



PCB connector, nominal cross section:  $0.75 \text{ mm}^2$ , color: white, nominal current: 6 A, rated voltage (III/2): 160 V, contact surface: Tin, contact connection type: Socket, number of potentials: 6, number of rows: 1, number of positions: 6, number of connections: 6, product range: PTCM 0,5/...-PL, pitch: 2.5 mm, connection method: Crimp connection, conductor/PCB connection direction:  $0^\circ$ , plug-in system: COMBICON PTSM, locking: Snap-in locking, mounting: Self-locking flange, type of packaging: packed in cardboard

# PTCM-MP-P 0,14-0,5 - Crimp contact

1013781

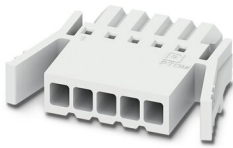
<https://www.phoenixcontact.com/us/products/1013781>



## PTCM 0,5/ 7-PL-2,5 WH - Printed-circuit board connector

1015459

<https://www.phoenixcontact.com/us/products/1015459>



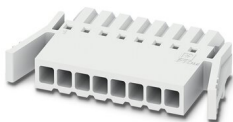
PCB connector, nominal cross section:  $0.75 \text{ mm}^2$ , color: white, nominal current: 6 A, rated voltage (III/2): 160 V, contact surface: Tin, contact connection type: Socket, number of potentials: 7, number of rows: 1, number of positions: 7, number of connections: 7, product range: PTCM 0,5/...-PL, pitch: 2.5 mm, connection method: Crimp connection, conductor/PCB connection direction:  $0^\circ$ , plug-in system: COMBICON PTSM, locking: Snap-in locking, mounting: Self-locking flange, type of packaging: packed in cardboard

---

## PTCM 0,5/ 8-PL-2,5 WH - Printed-circuit board connector

1015458

<https://www.phoenixcontact.com/us/products/1015458>



PCB connector, nominal cross section:  $0.75 \text{ mm}^2$ , color: white, nominal current: 6 A, rated voltage (III/2): 160 V, contact surface: Tin, contact connection type: Socket, number of potentials: 8, number of rows: 1, number of positions: 8, number of connections: 8, product range: PTCM 0,5/...-PL, pitch: 2.5 mm, connection method: Crimp connection, conductor/PCB connection direction:  $0^\circ$ , plug-in system: COMBICON PTSM, locking: Snap-in locking, mounting: Self-locking flange, type of packaging: packed in cardboard

# PTCM-MP-P 0,14-0,5 - Crimp contact

1013781

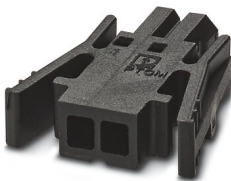
<https://www.phoenixcontact.com/us/products/1013781>



## PTCM 0,5/ 2-PL-2,5 BK - Printed-circuit board connector

1048116

<https://www.phoenixcontact.com/us/products/1048116>



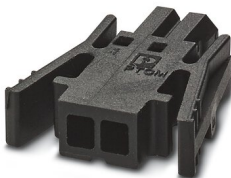
PCB connector, nominal cross section:  $0.75 \text{ mm}^2$ , color: black, nominal current: 6 A, rated voltage (III/2): 160 V, contact surface: Tin, contact connection type: Socket, number of rows: 1, number of positions: 2, product range: PTCM 0,5/...-PL, pitch: 2.5 mm, connection method: Crimp connection, conductor/PCB connection direction:  $0^\circ$ , plug-in system: COMBICON PTSM, locking: Snap-in locking, mounting: Self-locking flange, type of packaging: packed in cardboard

---

## PTCM 0,5/ 3-PL-2,5 BK - Printed-circuit board connector

1048117

<https://www.phoenixcontact.com/us/products/1048117>



PCB connector, nominal cross section:  $0.75 \text{ mm}^2$ , color: black, nominal current: 6 A, rated voltage (III/2): 160 V, contact surface: Tin, contact connection type: Socket, number of rows: 1, number of positions: 3, product range: PTCM 0,5/...-PL, pitch: 2.5 mm, connection method: Crimp connection, conductor/PCB connection direction:  $0^\circ$ , plug-in system: COMBICON PTSM, locking: Snap-in locking, mounting: Self-locking flange, type of packaging: packed in cardboard

# PTCM-MP-P 0,14-0,5 - Crimp contact

1013781

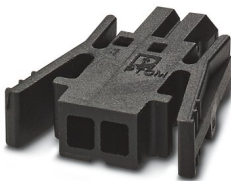
<https://www.phoenixcontact.com/us/products/1013781>



## PTCM 0,5/ 4-PL-2,5 BK - Printed-circuit board connector

1048118

<https://www.phoenixcontact.com/us/products/1048118>



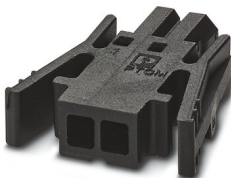
PCB connector, nominal cross section: 0.75 mm<sup>2</sup>, color: black, nominal current: 6 A, rated voltage (III/2): 160 V, contact surface: Tin, contact connection type: Socket, number of rows: 1, number of positions: 4, product range: PTCM 0,5/...-PL, pitch: 2.5 mm, connection method: Crimp connection, conductor/PCB connection direction: 0 °, plug-in system: COMBICON PTSM, locking: Snap-in locking, mounting: Self-locking flange, type of packaging: packed in cardboard

---

## PTCM 0,5/ 5-PL-2,5 BK - Printed-circuit board connector

1048119

<https://www.phoenixcontact.com/us/products/1048119>



PCB connector, nominal cross section: 0.75 mm<sup>2</sup>, color: black, nominal current: 6 A, rated voltage (III/2): 160 V, contact surface: Tin, contact connection type: Socket, number of potentials: 5, number of rows: 1, number of positions: 5, number of connections: 5, product range: PTCM 0,5/...-PL, pitch: 2.5 mm, connection method: Crimp connection, conductor/PCB connection direction: 0 °, plug-in system: COMBICON PTSM, locking: Snap-in locking, mounting: Self-locking flange, type of packaging: packed in cardboard

# PTCM-MP-P 0,14-0,5 - Crimp contact

1013781

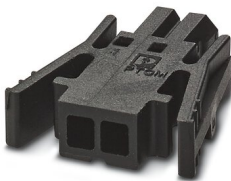
<https://www.phoenixcontact.com/us/products/1013781>



## PTCM 0,5/ 6-PL-2,5 BK - Printed-circuit board connector

1048121

<https://www.phoenixcontact.com/us/products/1048121>



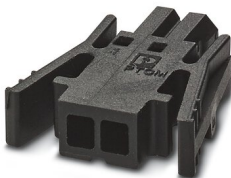
PCB connector, nominal cross section:  $0.75 \text{ mm}^2$ , color: black, nominal current: 6 A, rated voltage (III/2): 160 V, contact surface: Tin, contact connection type: Socket, number of potentials: 6, number of rows: 1, number of positions: 6, number of connections: 6, product range: PTCM 0,5/...-PL, pitch: 2.5 mm, connection method: Crimp connection, conductor/PCB connection direction:  $0^\circ$ , plug-in system: COMBICON PTSM, locking: Snap-in locking, mounting: Self-locking flange, type of packaging: packed in cardboard

---

## PTCM 0,5/ 7-PL-2,5 BK - Printed-circuit board connector

1048122

<https://www.phoenixcontact.com/us/products/1048122>



PCB connector, nominal cross section:  $0.75 \text{ mm}^2$ , color: black, nominal current: 6 A, rated voltage (III/2): 160 V, contact surface: Tin, contact connection type: Socket, number of potentials: 7, number of rows: 1, number of positions: 7, number of connections: 7, product range: PTCM 0,5/...-PL, pitch: 2.5 mm, connection method: Crimp connection, conductor/PCB connection direction:  $0^\circ$ , plug-in system: COMBICON PTSM, locking: Snap-in locking, mounting: Self-locking flange, type of packaging: packed in cardboard

# PTCM-MP-P 0,14-0,5 - Crimp contact

1013781

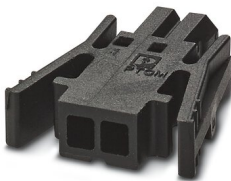
<https://www.phoenixcontact.com/us/products/1013781>



## PTCM 0,5/ 8-PL-2,5 BK - Printed-circuit board connector

1048123

<https://www.phoenixcontact.com/us/products/1048123>



PCB connector, nominal cross section: 0.75 mm<sup>2</sup>, color: black, nominal current: 6 A, rated voltage (III/2): 160 V, contact surface: Tin, contact connection type: Socket, number of potentials: 8, number of rows: 1, number of positions: 8, number of connections: 8, product range: PTCM 0,5/...-PL, pitch: 2.5 mm, connection method: Crimp connection, conductor/PCB connection direction: 0 °, plug-in system: COMBICON PTSM, locking: Snap-in locking, mounting: Self-locking flange, type of packaging: packed in cardboard

---

Phoenix Contact 2023 © - all rights reserved

<https://www.phoenixcontact.com>

Phoenix Contact USA  
586 Fulling Mill Road  
Middletown, PA 17057, United States  
(+717) 944-1300  
[info@phoenixcon.com](mailto:info@phoenixcon.com)