

KLM - Terminal strip marker carrier

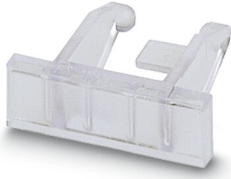
1004306

<https://www.phoenixcontact.com/us/products/1004306>



Please be informed that the data shown in this PDF document is generated from our online catalog. Please find the complete data in the user documentation. Our general terms of use for downloads are valid.

Terminal strip marker carrier, for E/UK or CLIPFIX 35 end brackets, can be marked using insert labels in 25 x 6 mm format



Commercial data

Item number	1004306
Packing unit	1 pc
Minimum order quantity	100 pc
Sales key	BG12
Product key	BG211A
Catalog page	Page 540 (C-3-2019)
GTIN	4017918012007
Weight per piece (including packing)	1.09 g
Weight per piece (excluding packing)	0.988 g
Customs tariff number	39269097
Country of origin	DE

KLM - Terminal strip marker carrier

1004306

<https://www.phoenixcontact.com/us/products/1004306>



Technical data

Product properties

Product type	Marker carriers
--------------	-----------------

Dimensions

Width	8 mm
Height NS 35/7,5	10 mm
Length	28 mm

Material specifications

Color	transparent
Material	ABS
Flammability rating according to UL 94	HB
Components	free from silicone and halogen

Environmental and real-life conditions

Ambient conditions

Ambient temperature (operation)	-40 °C ... 80 °C
Recommended ambient temperature (storage/transport)	23 °C
Recommended humidity (storage/transport)	50 %

Mounting

Mounting type	plug in
---------------	---------

KLM - Terminal strip marker carrier

1004306

<https://www.phoenixcontact.com/us/products/1004306>



Classifications

ECLASS

ECLASS-11.0	27281105
ECLASS-12.0	27281105
ECLASS-13.0	27281105

ETIM

ETIM 8.0	EC001530
----------	----------

UNSPSC

UNSPSC 21.0	39121400
-------------	----------

KLM - Terminal strip marker carrier



1004306

<https://www.phoenixcontact.com/us/products/1004306>

Accessories

ESL 26X6 - Insert strip

0808105

<https://www.phoenixcontact.com/us/products/0808105>

Insert strip, Sheet, white, unlabeled, can be labeled with: Office printing systems, CMS-P1-PLOTTER, perforated, mounting type: insert, lettering field size: 26 x 6 mm, Number of individual labels: 266



US-EMP (25X6) - Snap-in markers

0829435

<https://www.phoenixcontact.com/us/products/0829435>

Snap-in markers, Card, white, unlabeled, can be labeled with: BLUEMARK ID COLOR, BLUEMARK ID, THERMOMARK PRIME, THERMOMARK CARD 2.0, THERMOMARK CARD, mounting type: insert, lettering field size: 26 x 6.1 mm, Number of individual labels: 88



KLM - Terminal strip marker carrier

1004306

<https://www.phoenixcontact.com/us/products/1004306>



US-EMP (25X6)-1 - Snap-in markers

0802754

<https://www.phoenixcontact.com/us/products/0802754>



Snap-in markers, Card, white, unlabeled, can be labeled with: BLUEMARK ID COLOR, BLUEMARK ID, THERMOMARK PRIME, THERMOMARK CARD 2.0, THERMOMARK CARD, mounting type: insert, lettering field size: 25 x 6 mm, Number of individual labels: 84

EMT (25X6)R - Insert label

0817264

<https://www.phoenixcontact.com/us/products/0817264>



Insert label, Roll, white, unlabeled, can be labeled with: THERMOMARK E.300 (D)/600 (D), THERMOMARK ROLL 2.0, THERMOMARK ROLL, THERMOMARK ROLL X1, THERMOMARK ROLLMaster 300/600, THERMOMARK X1.2, mounting type: insert, cable diameter range: 10 ... 25 mm, lettering field size: 25 x 6 mm, Number of individual labels: 5000

Phoenix Contact 2023 © - all rights reserved
<https://www.phoenixcontact.com>

Phoenix Contact USA
586 Fulling Mill Road
Middletown, PA 17057, United States
(+717) 944-1300
info@phoenixcon.com