

# EM-CPS-DA-45C/45A - Adapter

1003289

<https://www.phoenixcontact.com/us/products/1003289>



Please be informed that the data shown in this PDF document is generated from our online catalog. Please find the complete data in the user documentation. Our general terms of use for downloads are valid.



Comfort device adapter with CrossLink<sup>®</sup> interface and moveable DIN rail, rated current: 45 A

## Your advantages

- Cable ends ultrasound-compressed
- Snap-on mechanism for quick and easy attachment to the CrossPowerSystem power distribution board

## Commercial data

Item number	1003289
Packing unit	1 pc
Minimum order quantity	4 pc
Sales key	C470
Product key	CK7854
Catalog page	Page 53 (C-5-2019)
GTIN	4055626470740
Weight per piece (including packing)	167.375 g
Weight per piece (excluding packing)	167.375 g
Customs tariff number	85369095
Country of origin	DE

# EM-CPS-DA-45C/45A - Adapter



1003289

<https://www.phoenixcontact.com/us/products/1003289>

## Technical data

### Product properties

Product type	Adapter
Product family	CrossPowerSystem
Application	Device adapter

### Electrical properties

Rated voltage	690 V AC (IEC)
	600 V AC (UL)
Rated current	45 A (IEC)
	40 A (UL)
Rated surge voltage	6 kV

### Dimensions

Width	45 mm
Height	160 mm
Depth	45 mm

# EM-CPS-DA-45C/45A - Adapter



1003289

<https://www.phoenixcontact.com/us/products/1003289>

## Approvals

To download certificates, visit the product detail page: <https://www.phoenixcontact.com/us/products/1003289>



**EAC**

Approval ID: RU C-DE.BL08.B.00511



**UL Listed**

Approval ID: FILE E 123528



**cUL Listed**

Approval ID: FILE E 123528

**cULus Listed**

# EM-CPS-DA-45C/45A - Adapter

1003289

<https://www.phoenixcontact.com/us/products/1003289>



## Classifications

### ECLASS

ECLASS-11.0	27371392
ECLASS-13.0	27371392
ECLASS-12.0	27371392

### ETIM

ETIM 8.0	EC002498
----------	----------

### UNSPSC

UNSPSC 21.0	39121100
-------------	----------

# EM-CPS-DA-45C/45A - Adapter



1003289

<https://www.phoenixcontact.com/us/products/1003289>

## Environmental product compliance

China RoHS	Environmentally friendly use period: unlimited = EFUP-e
	No hazardous substances above threshold values

# EM-CPS-DA-45C/45A - Adapter

1003289

<https://www.phoenixcontact.com/us/products/1003289>



## Mandatory accessories

### EM-CPS-225 - Power distribution board

1002634

<https://www.phoenixcontact.com/us/products/1002634>



Modular power distribution board with CrossLink<sup>®</sup> interface, 125 A, 3-pos., touch-proof and protection against polarity reversal, width: 225 mm

---

### EM-CPS-405 - Power distribution board

1002635

<https://www.phoenixcontact.com/us/products/1002635>



Modular power distribution board with CrossLink<sup>®</sup> interface, 125 A, 3-pos., touch-proof and protection against polarity reversal, width: 405 mm

---

## Accessories

# EM-CPS-DA-45C/45A - Adapter

1003289

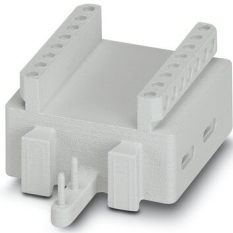
<https://www.phoenixcontact.com/us/products/1003289>



## EM-CPS-DAE-45 - Adapter

1003293

<https://www.phoenixcontact.com/us/products/1003293>



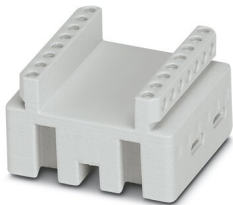
Height extension for Comfort device adapter, width: 45 mm

---

## EM-CPS-DAES-45 - Adapter

1003294

<https://www.phoenixcontact.com/us/products/1003294>



Lateral extension of the height extension for Comfort device adapter, width: 45 mm

## EM-CPS-DA-45C/45A - Adapter

1003289

<https://www.phoenixcontact.com/us/products/1003289>



## EM-CPS-TS-45 - Adapter

1003295

<https://www.phoenixcontact.com/us/products/1003295>



Comfort DIN rail, additional DIN rail for Comfort device adapter

---

## EM-CPS-DHS-45 - Adapter

1003296

<https://www.phoenixcontact.com/us/products/1003296>



Siemens device mount, positioning element for Siemens S0 and S00 switching devices



# EM-CPS-DA-45C/45A - Adapter

1003289

<https://www.phoenixcontact.com/us/products/1003289>



## EM-CPS-DHE-45 - Adapter

1002663

<https://www.phoenixcontact.com/us/products/1002663>



Eaton device mount, positioning element for Eaton PKZ switching devices

---

Phoenix Contact 2023 © - all rights reserved

<https://www.phoenixcontact.com>

Phoenix Contact USA  
586 Fulling Mill Road  
Middletown, PA 17057, United States  
(+717) 944-1300  
[info@phoenixcon.com](mailto:info@phoenixcon.com)