

EM-CPS-DA-45C/16A - Adapter



1002666

<https://www.phoenixcontact.com/us/products/1002666>

Please be informed that the data shown in this PDF document is generated from our online catalog. Please find the complete data in the user documentation. Our general terms of use for downloads are valid.



Comfort device adapter with CrossLink[®] interface and moveable DIN rail, rated current: 16 A

Your advantages

- Cable ends ultrasound-compressed
- Snap-on mechanism for quick and easy attachment to the CrossPowerSystem power distribution board

Commercial data

Item number	1002666
Packing unit	1 pc
Minimum order quantity	4 pc
Sales key	C470
Product key	CK7851
Catalog page	Page 53 (C-5-2019)
GTIN	4055626468129
Weight per piece (including packing)	124.175 g
Weight per piece (excluding packing)	120.825 g
Customs tariff number	85369095
Country of origin	DE

EM-CPS-DA-45C/16A - Adapter

1002666

<https://www.phoenixcontact.com/us/products/1002666>



Technical data

Product properties

Product type	Adapter
Product family	CrossPowerSystem
Application	Device adapter

Electrical properties

Rated voltage	690 V AC (IEC)
	600 V AC (UL)
Rated current	16 A (IEC)
	12 A (UL)
Rated surge voltage	6 kV

Dimensions

Width	45 mm
Height	160 mm
Depth	45 mm

EM-CPS-DA-45C/16A - Adapter



1002666

<https://www.phoenixcontact.com/us/products/1002666>

Approvals

To download certificates, visit the product detail page: <https://www.phoenixcontact.com/us/products/1002666>



EAC

Approval ID: RU C-DE.BL08.B.00511



UL Listed

Approval ID: FILE E 123528



cUL Listed

Approval ID: FILE E 123528

cULus Listed

EM-CPS-DA-45C/16A - Adapter

1002666

<https://www.phoenixcontact.com/us/products/1002666>



Classifications

ECLASS

ECLASS-11.0	27371392
ECLASS-12.0	27371392
ECLASS-13.0	27371392

ETIM

ETIM 8.0	EC002498
----------	----------

UNSPSC

UNSPSC 21.0	39121100
-------------	----------

EM-CPS-DA-45C/16A - Adapter



1002666

<https://www.phoenixcontact.com/us/products/1002666>

Environmental product compliance

China RoHS	Environmentally friendly use period: unlimited = EFUP-e
	No hazardous substances above threshold values

EM-CPS-DA-45C/16A - Adapter

1002666

<https://www.phoenixcontact.com/us/products/1002666>



Mandatory accessories

EM-CPS-225 - Power distribution board

1002634

<https://www.phoenixcontact.com/us/products/1002634>



Modular power distribution board with CrossLink[®] interface, 125 A, 3-pos., touch-proof and protection against polarity reversal, width: 225 mm

EM-CPS-405 - Power distribution board

1002635

<https://www.phoenixcontact.com/us/products/1002635>



Modular power distribution board with CrossLink[®] interface, 125 A, 3-pos., touch-proof and protection against polarity reversal, width: 405 mm

Accessories

EM-CPS-DA-45C/16A - Adapter

1002666

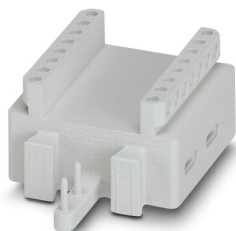
<https://www.phoenixcontact.com/us/products/1002666>



EM-CPS-DAE-45 - Adapter

1003293

<https://www.phoenixcontact.com/us/products/1003293>

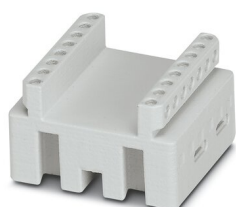


Height extension for Comfort device adapter, width: 45 mm

EM-CPS-DAES-45 - Adapter

1003294

<https://www.phoenixcontact.com/us/products/1003294>



Lateral extension of the height extension for Comfort device adapter, width: 45 mm

EM-CPS-DA-45C/16A - Adapter

1002666

<https://www.phoenixcontact.com/us/products/1002666>



EM-CPS-TS-45 - Adapter

1003295

<https://www.phoenixcontact.com/us/products/1003295>



Comfort DIN rail, additional DIN rail for Comfort device adapter

EM-CPS-DHS-45 - Adapter

1003296

<https://www.phoenixcontact.com/us/products/1003296>



Siemens device mount, positioning element for Siemens S0 and S00 switching devices

EM-CPS-DA-45C/16A - Adapter

1002666

<https://www.phoenixcontact.com/us/products/1002666>



EM-CPS-DHE-45 - Adapter

1002663

<https://www.phoenixcontact.com/us/products/1002663>



Eaton device mount, positioning element for Eaton PKZ switching devices

Phoenix Contact 2023 © - all rights reserved

<https://www.phoenixcontact.com>

Phoenix Contact USA
586 Fulling Mill Road
Middletown, PA 17057, United States
(+717) 944-1300
info@phoenixcon.com