

PTRV 8 /BK - Marshalling panel

1061722

<https://www.phoenixcontact.com/us/products/1061722>



Please be informed that the data shown in this PDF document is generated from our online catalog. Please find the complete data in the user documentation. Our general terms of use for downloads are valid.



Marshalling panel, nom. voltage: 250 V, nominal current: 8 A, connection method: Push-in connection, 1st, 2nd, 3rd, 4th, 5th, 6th, 7th and 8th level, Rated cross section: 1.5 mm², cross section: 0.14 mm² - 2.5 mm², mounting: NS 35/7,5, NS 35/15, color: gray, color of connection elements: black

Commercial data

| | |
|--------------------------------------|---------------|
| Item number | 1061722 |
| Packing unit | 1 pc |
| Minimum order quantity | 10 pc |
| Sales key | BE62 |
| Product key | BE6211 |
| GTIN | 4055626716824 |
| Weight per piece (including packing) | 36.88 g |
| Weight per piece (excluding packing) | 33.78 g |
| Customs tariff number | 85369010 |
| Country of origin | PL |

PTRV 8 /BK - Marshalling panel



1061722

<https://www.phoenixcontact.com/us/products/1061722>

Technical data

Product properties

| | |
|-----------------------|----------------------|
| Product type | Marshalling terminal |
| Number of positions | 2 |
| Number of connections | 32 |
| Number of rows | 8 |
| Potentials | 8 |

Insulation characteristics

| | |
|----------------------|-----|
| Overvoltage category | III |
|----------------------|-----|

Electrical properties

| | |
|---|--------|
| Rated surge voltage | 4 kV |
| Maximum power dissipation for nominal condition | 0.56 W |

Connection data

| | |
|---------------------------------|---------------------|
| Number of connections per level | 4 |
| Nominal cross section | 1.5 mm ² |

1st, 2nd, 3rd, 4th, 5th, 6th, 7th and 8th level

| | |
|---|--|
| Stripping length | 8 mm ... 10 mm |
| Connection in acc. with standard | IEC 60947-7-1 |
| Conductor cross section rigid | 0.14 mm ² ... 2.5 mm ² |
| Cross section AWG | 26 ... 14 (converted acc. to IEC) |
| Conductor cross section flexible | 0.14 mm ² ... 1.5 mm ² |
| Conductor cross section, flexible [AWG] | 26 ... 16 (converted acc. to IEC) |
| Conductor cross-section flexible (ferrule without plastic sleeve) | 0.14 mm ² ... 1.5 mm ² |
| Flexible conductor cross section (ferrule with plastic sleeve) | 0.14 mm ² ... 1.5 mm ² |
| Nominal current | 8 A |
| Maximum load current | 8 A (with 1.5 mm ² conductor cross section) |
| Nominal voltage | 250 V |
| Nominal cross section | 1.5 mm ² |

Dimensions

| | |
|--------------------|---------|
| Width | 8.3 mm |
| Height | 100 mm |
| Depth on NS 35/7,5 | 87.5 mm |
| Depth on NS 35/15 | 95 mm |

Material specifications

| | |
|--|-------|
| Color | gray |
| Color of connection elements | black |
| Flammability rating according to UL 94 | V0 |
| Insulating material group | I |

PTRV 8 /BK - Marshalling panel

1061722

<https://www.phoenixcontact.com/us/products/1061722>



| | |
|---------------------|----|
| Insulating material | PA |
|---------------------|----|

Mechanical properties

Mechanical data

| | |
|-----------------|-----|
| Open side panel | Yes |
|-----------------|-----|

Environmental and real-life conditions

Ambient conditions

| | |
|--|---|
| Ambient temperature (operation) | -60 °C ... 105 °C (max. short-term operating temperature RTI Elec.) |
| Ambient temperature (storage/transport) | -25 °C ... 60 °C (for a short time, not exceeding 24 h, -60 °C to +70 °C) |
| Ambient temperature (assembly) | -5 °C ... 70 °C |
| Ambient temperature (actuation) | -5 °C ... 70 °C |
| Permissible humidity (storage/transport) | 30 % ... 70 % |

Standards and regulations

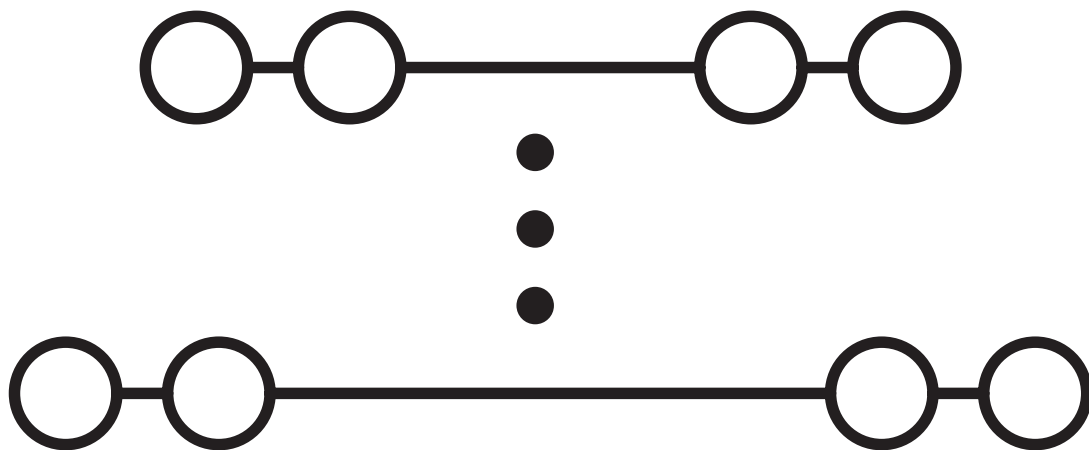
| | |
|----------------------------------|---------------|
| Connection in acc. with standard | IEC 60947-7-1 |
|----------------------------------|---------------|

Mounting

| | |
|---------------|-----------|
| Mounting type | NS 35/7,5 |
| | NS 35/15 |

Drawings

Circuit diagram



PTRV 8 /BK - Marshalling panel



1061722

<https://www.phoenixcontact.com/us/products/1061722>

Approvals

To download certificates, visit the product detail page: <https://www.phoenixcontact.com/us/products/1061722>

DNV

Approval ID: TAE000016Y



CSA

Approval ID: 13631

| | Nominal voltage U_N | Nominal current I_N | Cross section AWG | Cross section mm^2 |
|-------------|-----------------------|-----------------------|-------------------|-----------------------------|
| Use group B | | | | |
| | 300 V | 10 A | 26 - 14 | - |
| Use group D | | | | |
| | 300 V | 10 A | 26 - 14 | - |



IECEE CB Scheme

Approval ID: NL-58817

| | Nominal voltage U_N | Nominal current I_N | Cross section AWG | Cross section mm^2 |
|--|-----------------------|-----------------------|-------------------|-----------------------------|
| | 250 V | 8 A | - | - |



EAC

Approval ID: RU C-DE.BL08.B.00682



cULus Recognized

Approval ID: E60425



KEMA-KEUR

Approval ID: 71-102890

| | Nominal voltage U_N | Nominal current I_N | Cross section AWG | Cross section mm^2 |
|--------------------------|-----------------------|-----------------------|-------------------|-----------------------------|
| Only flexible conductors | 250 V | 8 A | - | 0.14 - 1.5 |
| Only rigid conductors | 250 V | 8 A | - | 0.14 - 2.5 |



EAC

Approval ID: B.01687



cULus Recognized

Approval ID: E60425

PTRV 8 /BK - Marshalling panel

1061722

<https://www.phoenixcontact.com/us/products/1061722>



Classifications

ECLASS

| | |
|-------------|----------|
| ECLASS-11.0 | 27141120 |
| ECLASS-13.0 | 27250105 |

ETIM

| | |
|----------|----------|
| ETIM 8.0 | EC000897 |
|----------|----------|

UNSPSC

| | |
|-------------|----------|
| UNSPSC 21.0 | 39121400 |
|-------------|----------|

PTRV 8 /BK - Marshalling panel



1061722

<https://www.phoenixcontact.com/us/products/1061722>

Environmental product compliance

| | |
|------------|---|
| China RoHS | Environmentally friendly use period: unlimited = EFUP-e |
| | No hazardous substances above threshold values |

PTRV 8 /BK - Marshalling panel



1061722

<https://www.phoenixcontact.com/us/products/1061722>

Accessories

DP-PTRV 8 - Spacer plate

3270166

<https://www.phoenixcontact.com/us/products/3270166>



Spacer plate, length: 100 mm, width: 8.3 mm, height: 100 mm, color: gray

CDC-PTRV - Retaining bracket

3270167

<https://www.phoenixcontact.com/us/products/3270167>



Retaining bracket, via four PTRV single modules, pitch: 8.3 mm, width: 35.6 mm, height: 71.5 mm, color: gray

PTRV 8 /BK - Marshalling panel

1061722

<https://www.phoenixcontact.com/us/products/1061722>



PT-IL - Mounting material

3208090

<https://www.phoenixcontact.com/us/products/3208090>

Operating decal for the push-in Technology



SZF 0-0,4X2,5 - Screwdriver

1204504

<https://www.phoenixcontact.com/us/products/1204504>



Actuation tool, for ST terminal blocks, also suitable for use as a bladed screwdriver, size: 0.4 x 2.5 x 75 mm, 2-component grip, with non-slip grip

PTRV 8 /BK - Marshalling panel

1061722

<https://www.phoenixcontact.com/us/products/1061722>



ST-BW 0 - Actuation tool

1200135

<https://www.phoenixcontact.com/us/products/1200135>

Actuation tool, for all 1.5 mm² spring cages from PT 1,5/S and FT 1,5/S



RPS - Reducing plug

0201647

<https://www.phoenixcontact.com/us/products/0201647>

Reducing plug, number of positions: 1, color: gray



PTRV 8 /BK - Marshalling panel

1061722

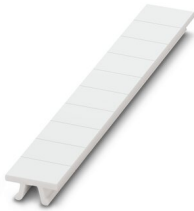
<https://www.phoenixcontact.com/us/products/1061722>



ZB 8,3:UNBEDRUCKT - Zack marker strip

0803444

<https://www.phoenixcontact.com/us/products/0803444>



Zack marker strip, Strip, white, unlabeled, can be labeled with: PLOTMARK, CMS-P1-PLOTTER, mounting type: snapped, for terminal block width: 8.3 mm, lettering field size: 10.5 x 8.3 mm

ZB 8,3,LGS:FORTL.ZAHLEN - Zack marker strip

0803480

<https://www.phoenixcontact.com/us/products/0803480>



Zack marker strip, Strip, white, labeled, can be labeled with: CMS-P1-PLOTTER, mounting type: snapped, for terminal block width: 8.3 mm, lettering field size: 10.5 x 8.3 mm

PTRV 8 /BK - Marshalling panel

1061722

<https://www.phoenixcontact.com/us/products/1061722>



ZB 8,3,QR:FORTL.ZAHLEN - Zack marker strip

0803479

<https://www.phoenixcontact.com/us/products/0803479>

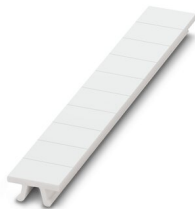


Zack marker strip, Strip, white, labeled, can be labeled with: CMS-P1-PLOTTER, mounting type: snapped, for terminal block width: 8.3 mm, lettering field size: 10.5 x 8.3 mm

ZB 8,3 CUS - Zack marker strip

8191573

<https://www.phoenixcontact.com/us/products/8191573>



Zack marker strip, Strip, white, labeled according to customer specifications, mounting type: snap into tall marker groove, for terminal block width: 8.3 mm, lettering field size: 10.5 x 8.3 mm

PTRV 8 /BK - Marshalling panel



1061722

<https://www.phoenixcontact.com/us/products/1061722>

TM-PTRV 8,QR:1-8 - Marker for terminal blocks

0803468

<https://www.phoenixcontact.com/us/products/0803468>



Marker for terminal blocks, white, labeled, mounting type: snapped, for terminal block width: 8 mm, lettering field size: 2.4 x 9.2 mm, Number of individual labels: 2

TM-PTRV 8,QR:8-1 - Marker for terminal blocks

0803470

<https://www.phoenixcontact.com/us/products/0803470>



Marker for terminal blocks, white, labeled, mounting type: snapped, for terminal block width: 8 mm, lettering field size: 2.4 x 9.2 mm

PTRV 8 /BK - Marshalling panel

1061722

<https://www.phoenixcontact.com/us/products/1061722>



TM-PTRV 8,QR:A-H - Marker for terminal blocks

0803471

<https://www.phoenixcontact.com/us/products/0803471>



Marker for terminal blocks, white, labeled, mounting type: snapped, for terminal block width: 8 mm, lettering field size: 2.4 x 9.2 mm

TM-PTRV 8,QR:H-A - Marker for terminal blocks

0803473

<https://www.phoenixcontact.com/us/products/0803473>



Marker for terminal blocks, white, labeled, mounting type: snapped, for terminal block width: 8 mm, lettering field size: 2.4 x 9.2 mm, Number of individual labels: 8

PTRV 8 /BK - Marshalling panel



1061722

<https://www.phoenixcontact.com/us/products/1061722>

D-PTRV 8 WH - End cover

3270154

<https://www.phoenixcontact.com/us/products/3270154>



End cover, length: 100 mm, width: 3.8 mm, height: 100 mm, color: white

D-PTRV 8 WH 1-8 - End cover

3270155

<https://www.phoenixcontact.com/us/products/3270155>



End cover, length: 100 mm, width: 2.2 mm, height: 100 mm, color: white

PTRV 8 /BK - Marshalling panel



1061722

<https://www.phoenixcontact.com/us/products/1061722>

D-PTRV 8 WH 1-8 LGS - End cover

3270240

<https://www.phoenixcontact.com/us/products/3270240>



End cover, length: 100 mm, width: 2.2 mm, height: 100 mm, color: white

D-PTRV 8 WH 8-1 - End cover

3270242

<https://www.phoenixcontact.com/us/products/3270242>



End cover, length: 100 mm, width: 2.2 mm, height: 100 mm, color: white

PTRV 8 /BK - Marshalling panel



1061722

<https://www.phoenixcontact.com/us/products/1061722>

D-PTRV 8 WH 8-1 LGS - End cover

3270244

<https://www.phoenixcontact.com/us/products/3270244>



End cover, length: 100 mm, width: 2.2 mm, height: 100 mm, color: white

D-PTRV 8 WH 1-16 - End cover

3270228

<https://www.phoenixcontact.com/us/products/3270228>



End cover, length: 100 mm, width: 2.2 mm, height: 100 mm, color: white

PTRV 8 /BK - Marshalling panel



1061722

<https://www.phoenixcontact.com/us/products/1061722>

D-PTRV 8 WH 1-16 LGS - End cover

3270229

<https://www.phoenixcontact.com/us/products/3270229>



End cover, length: 100 mm, width: 2.2 mm, height: 100 mm, color: white

D-PTRV 8 WH 9-16 - End cover

3270211

<https://www.phoenixcontact.com/us/products/3270211>



End cover, length: 100 mm, width: 2.2 mm, height: 100 mm, color: white

PTRV 8 /BK - Marshalling panel



1061722

<https://www.phoenixcontact.com/us/products/1061722>

D-PTRV 8 WH 9-16 LGS - End cover

3270212

<https://www.phoenixcontact.com/us/products/3270212>



End cover, length: 100 mm, width: 2.2 mm, height: 100 mm, color: white

D-PTRV 8 WH 17-24 - End cover

3270213

<https://www.phoenixcontact.com/us/products/3270213>



End cover, length: 100 mm, width: 2.2 mm, height: 100 mm, color: white

PTRV 8 /BK - Marshalling panel



1061722

<https://www.phoenixcontact.com/us/products/1061722>

D-PTRV 8 WH 17-24 LGS - End cover

3270214

<https://www.phoenixcontact.com/us/products/3270214>



End cover, length: 100 mm, width: 2.2 mm, height: 100 mm, color: white

D-PTRV 8 WH 25-32 - End cover

3270215

<https://www.phoenixcontact.com/us/products/3270215>



End cover, length: 100 mm, width: 2.2 mm, height: 100 mm, color: white

PTRV 8 /BK - Marshalling panel



1061722

<https://www.phoenixcontact.com/us/products/1061722>

D-PTRV 8 WH 25-32 LGS - End cover

3270216

<https://www.phoenixcontact.com/us/products/3270216>



End cover, length: 100 mm, width: 2.2 mm, height: 100 mm, color: white

D-PTRV 8 WH A-H - End cover

3270156

<https://www.phoenixcontact.com/us/products/3270156>



End cover, length: 100 mm, width: 2.2 mm, height: 100 mm, color: white

PTRV 8 /BK - Marshalling panel



1061722

<https://www.phoenixcontact.com/us/products/1061722>

D-PTRV 8 WH A-H LGS - End cover

3270241

<https://www.phoenixcontact.com/us/products/3270241>



End cover, length: 100 mm, width: 2.2 mm, height: 100 mm, color: white

D-PTRV 8 WH H-A - End cover

3270243

<https://www.phoenixcontact.com/us/products/3270243>



End cover, length: 100 mm, width: 2.2 mm, height: 100 mm, color: white

PTRV 8 /BK - Marshalling panel

1061722

<https://www.phoenixcontact.com/us/products/1061722>



D-PTRV 8 WH H-A LGS - End cover

3270245

<https://www.phoenixcontact.com/us/products/3270245>



End cover, length: 100 mm, width: 2.2 mm, height: 100 mm, color: white

NS 35/ 7,5 PERF 2000MM - DIN rail perforated

0801733

<https://www.phoenixcontact.com/us/products/0801733>



DIN rail perforated, acc. to EN 60715, material: Steel, galvanized, passivated with a thick layer, Standard profile, color: silver, Pack of 25 (50 m)

PTRV 8 /BK - Marshalling panel

1061722

<https://www.phoenixcontact.com/us/products/1061722>



NS 35/ 7,5 UNPERF 2000MM - DIN rail, unperforated

0801681

<https://www.phoenixcontact.com/us/products/0801681>



DIN rail, unperforated, acc. to EN 60715, material: Steel, galvanized, passivated with a thick layer, Standard profile, color: silver, Pack of 25 (50 m)

NS 35/ 7,5 WH PERF 2000MM - DIN rail perforated

1204119

<https://www.phoenixcontact.com/us/products/1204119>



DIN rail perforated, acc. to EN 60715, material: Steel, Galvanized, white passivated, Standard profile, color: silver, Pack of 25 (50 m)

PTRV 8 /BK - Marshalling panel

1061722

<https://www.phoenixcontact.com/us/products/1061722>



NS 35/ 7,5 WH UNPERF 2000MM-VPE 10 - DIN rail, unperforated

1204122

<https://www.phoenixcontact.com/us/products/1204122>



DIN rail, unperforated, acc. to EN 60715, material: Steel, Galvanized, white passivated, Standard profile, color: silver, Pack of 10 (20 m)

NS 35/ 7,5 AL UNPERF 2000MM - DIN rail, unperforated

0801704

<https://www.phoenixcontact.com/us/products/0801704>



DIN rail, unperforated, acc. to EN 60715, material: Aluminum, uncoated, Standard profile, color: silver, Pack of 25 (50 m)

PTRV 8 /BK - Marshalling panel

1061722

<https://www.phoenixcontact.com/us/products/1061722>



NS 35/ 7,5 ZN PERF 2000MM - DIN rail perforated

1206421

<https://www.phoenixcontact.com/us/products/1206421>



DIN rail perforated, acc. to EN 60715, material: Steel, galvanized, Standard profile, color: silver, Pack of 25 (50 m)

NS 35/ 7,5 ZN UNPERF 2000MM - DIN rail, unperforated

1206434

<https://www.phoenixcontact.com/us/products/1206434>



DIN rail, unperforated, acc. to EN 60715, material: Steel, galvanized, Standard profile, color: silver, Pack of 25 (50 m)

PTRV 8 /BK - Marshalling panel

1061722

<https://www.phoenixcontact.com/us/products/1061722>



NS 35/ 7,5 CU UNPERF 2000MM-VPE 10 - DIN rail, unperforated

0801762

<https://www.phoenixcontact.com/us/products/0801762>



DIN rail, unperforated, acc. to EN 60715, material: Copper, uncoated, Standard profile, color: copper-colored, Pack of 10 (20 m)

NS 35/ 7,5 CAP - End cap

1206560

<https://www.phoenixcontact.com/us/products/1206560>

DIN rail end piece, for DIN rail NS 35/7.5



PTRV 8 /BK - Marshalling panel

1061722

<https://www.phoenixcontact.com/us/products/1061722>



CLIPFIX 35 - End clamp

3022218

<https://www.phoenixcontact.com/us/products/3022218>

Quick mounting end clamp for NS 35/7,5 DIN rail or NS 35/15 DIN rail, with marking option, width: 9.5 mm, color: gray



CLIPFIX 35-5 - End clamp

3022276

<https://www.phoenixcontact.com/us/products/3022276>

Quick mounting end clamp for NS 35/7,5 DIN rail or NS 35/15 DIN rail, with marking option, with parking option for FBS...5, FBS...6, KSS 5, KSS 6, width: 5.15 mm, color: gray



PTRV 8 /BK - Marshalling panel

1061722

<https://www.phoenixcontact.com/us/products/1061722>

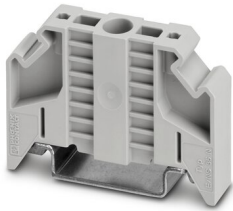


E/NS 35 N - End clamp

0800886

<https://www.phoenixcontact.com/us/products/0800886>

End clamp, width: 9.5 mm, color: gray

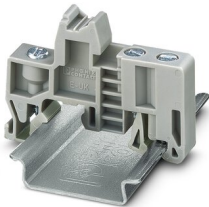


E/UK - End clamp

1201442

<https://www.phoenixcontact.com/us/products/1201442>

End clamp, material: PA, color: gray, Mounting on a DIN rail NS 32 or NS 35



PTRV 8 /BK - Marshalling panel

1061722

<https://www.phoenixcontact.com/us/products/1061722>



E/UK 1 - End clamp

1201413

<https://www.phoenixcontact.com/us/products/1201413>



End clamps, for supporting the ends of double-level and three-level terminal blocks, width: 10 mm, color: gray

MPS-MT - Test plugs

0201744

<https://www.phoenixcontact.com/us/products/0201744>



Test plugs, with solder connection up to 1 mm² conductor cross section, number of positions: 1, color: gray

PTRV 8 /BK - Marshalling panel

1061722

<https://www.phoenixcontact.com/us/products/1061722>



MPS-IH WH - Insulating sleeve

0201663

<https://www.phoenixcontact.com/us/products/0201663>

Insulating sleeve, color: white



MPS-IH RD - Insulating sleeve

0201676

<https://www.phoenixcontact.com/us/products/0201676>

Insulating sleeve, color: red



PTRV 8 /BK - Marshalling panel

1061722

<https://www.phoenixcontact.com/us/products/1061722>

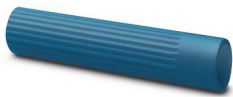


MPS-IH BU - Insulating sleeve

0201689

<https://www.phoenixcontact.com/us/products/0201689>

Insulating sleeve, color: blue



MPS-IH YE - Insulating sleeve

0201692

<https://www.phoenixcontact.com/us/products/0201692>

Insulating sleeve, color: yellow



PTRV 8 /BK - Marshalling panel

1061722

<https://www.phoenixcontact.com/us/products/1061722>



MPS-IH GN - Insulating sleeve

0201702

<https://www.phoenixcontact.com/us/products/0201702>

Insulating sleeve, color: green



MPS-IH GY - Insulating sleeve

0201728

<https://www.phoenixcontact.com/us/products/0201728>

Insulating sleeve, color: gray



PTRV 8 /BK - Marshalling panel

1061722

<https://www.phoenixcontact.com/us/products/1061722>



MPS-IH BK - Insulating sleeve

0201731

<https://www.phoenixcontact.com/us/products/0201731>

Insulating sleeve, color: black



Phoenix Contact 2023 © - all rights reserved

<https://www.phoenixcontact.com>

Phoenix Contact USA
586 Fulling Mill Road
Middletown, PA 17057, United States
(+717) 944-1300
info@phoenixcon.com