

PC 6/ 2-ST-BUS-7,62 - PCB connector



1044740

<https://www.phoenixcontact.com/us/products/1044740>

Please be informed that the data shown in this PDF document is generated from our online catalog. Please find the complete data in the user documentation. Our general terms of use for downloads are valid.



PCB connector, nominal cross section: 16 mm², color: green, nominal current: 32 A, rated voltage (III/2): 1000 V, contact surface: Tin, contact connection type: Socket, number of potentials: 2, number of rows: 1, number of positions: 2, number of connections: 2, product range: PC 6/..-ST-BUS, pitch: 7.62 mm, connection method: Displacement connection, screw head form: T15 Torx[®], conductor/PCB connection direction: 0 °, locking clip: - without locking clip, plug-in system: COMBICON PC 6, locking: without, mounting: without, type of packaging: packed in cardboard

Your advantages

- Potentials can be easily looped through – ideal for BUS applications
- Connection without conductor pretreatment for huge time savings

Commercial data

Item number	1044740
Packing unit	1 pc
Minimum order quantity	20 pc
Sales key	AA04
Product key	AADAEA
GTIN	4055626622842
Weight per piece (including packing)	31.08 g
Weight per piece (excluding packing)	31 g
Customs tariff number	85366990
Country of origin	SK

PC 6/ 2-ST-BUS-7,62 - PCB connector



1044740

<https://www.phoenixcontact.com/us/products/1044740>

Technical data

Product properties

Product line	COMBICON Connectors L
Product type	PCB connector
Product family	PC 6/...-ST-BUS
Number of positions	2
Pitch	7.62 mm
Number of connections	2
Number of rows	1
Mounting flange	without
Number of potentials	2

Electrical properties

Nominal current I_N	32 A
Nominal voltage U_N	1000 V
Degree of pollution	3
Rated voltage (III/3)	1000 V
Rated surge voltage (III/3)	8 kV
Rated voltage (III/2)	1000 V
Rated surge voltage (III/2)	8 kV
Rated voltage (II/2)	1000 V
Rated surge voltage (II/2)	6 kV

Connection data

Connection technology

Connector system	COMBICON PC 6
Nominal cross section	16 mm ²
Contact connection type	Socket

Interlock

Locking type	without
Mounting flange	without

Conductor connection

Connection method	Displacement connection
Conductor/PCB connection direction	0 °
Conductor cross section flexible	16 mm ² (H07V-K / Maximum outer diameter 8.1 mm)
Tightening torque	3 Nm

Conductor connection

Connection method	Displacement connection
Conductor/PCB connection direction	0 °
Tightening torque	3 Nm

PC 6/ 2-ST-BUS-7,62 - PCB connector



1044740

<https://www.phoenixcontact.com/us/products/1044740>

Material specifications

Material data - contact

Note	WEEE/RoHS-compliant, free of whiskers according to IEC 60068-2-82/JEDEC JESD 201
Contact material	Cu alloy
Surface characteristics	hot-dip tin-plated
Metal surface terminal point (top layer)	Tin (4 - 8 µm Sn)
Metal surface contact area (top layer)	Tin (4 - 8 µm Sn)

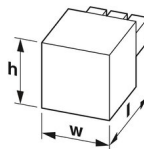
Material data - housing

Color (Housing)	green (6021)
Insulating material	PA
Insulating material group	I
CTI according to IEC 60112	600
Flammability rating according to UL 94	V0
Glow wire flammability index GWFI according to EN 60695-2-12	850
Glow wire ignition temperature GWIT according to EN 60695-2-13	775
Temperature for the ball pressure test according to EN 60695-10-2	125 °C

Material data – actuating element

Color (Actuating element)	orange (2003)
---------------------------	---------------

Dimensions

Dimensional drawing	
Pitch	7.62 mm
Width [w]	24.4 mm
Height [h]	58 mm
Length [l]	28.75 mm

Mounting

Drive form screw head	Torx® (T15)
Connection method	Displacement connection
Drive form screw head	Torx® (T15)

Notes

Notes on operation	In accordance with IEC 61984, COMBICON connectors have no switching power (COC). During designated use, they must not be plugged in or disconnected when carrying voltage or under load.
--------------------	--

PC 6/ 2-ST-BUS-7,62 - PCB connector



1044740

<https://www.phoenixcontact.com/us/products/1044740>

Environmental and real-life conditions

Ambient conditions

Ambient temperature (operation)	-40 °C ... 100 °C (dependent on the derating curve)
Ambient temperature (storage/transport)	-40 °C ... 70 °C
Relative humidity (storage/transport)	30 % ... 70 %
Ambient temperature (assembly)	-5 °C ... 40 °C (Depending on the conductor insulation)

Electrical tests

Air clearances and creepage distances |

Specification	IEC 60664-1:2007-04
Insulating material group	I
Comparative tracking index (IEC 60112)	CTI 600
Rated insulation voltage (III/3)	1000 V
Rated surge voltage (III/3)	8 kV
minimum clearance value - non-homogenous field (III/3)	8 mm
minimum creepage distance (III/3)	12.5 mm
Rated insulation voltage (III/2)	1000 V
Rated surge voltage (III/2)	8 kV
minimum clearance value - non-homogenous field (III/2)	8 mm
minimum creepage distance (III/2)	8 mm
Rated insulation voltage (II/2)	1000 V
Rated surge voltage (II/2)	6 kV
minimum clearance value - non-homogenous field (II/2)	5.5 mm
minimum creepage distance (II/2)	5.5 mm

Packaging specifications

Type of packaging	packed in cardboard
-------------------	---------------------

PC 6/ 2-ST-BUS-7,62 - PCB connector




1044740

<https://www.phoenixcontact.com/us/products/1044740>

Approvals

To download certificates, visit the product detail page: <https://www.phoenixcontact.com/us/products/1044740>

 cULus Recognized Approval ID: E60425-20010727				
	Nominal voltage U_N	Nominal current I_N	Cross section AWG	Cross section mm^2
Use group B	600 V	30 A	6	-
Use group C	600 V	30 A	6	-
Use group F	600 V	30 A	6	-

 EAC Approval ID: B.01687	
--	--

PC 6/ 2-ST-BUS-7,62 - PCB connector



1044740

<https://www.phoenixcontact.com/us/products/1044740>

Classifications

ECLASS

ECLASS-11.0	27460202
ECLASS-12.0	27460202
ECLASS-13.0	27460202

ETIM

ETIM 8.0	EC002638
----------	----------

UNSPSC

UNSPSC 21.0	39121400
-------------	----------

PC 6/ 2-ST-BUS-7,62 - PCB connector



1044740

<https://www.phoenixcontact.com/us/products/1044740>

Environmental product compliance

REACH SVHC	Lead 7439-92-1
China RoHS	Environmentally Friendly Use Period = 50 years
	For information on hazardous substances, refer to the manufacturer's declaration available under "Downloads"

PC 6/ 2-ST-BUS-7,62 - PCB connector



1044740

<https://www.phoenixcontact.com/us/products/1044740>

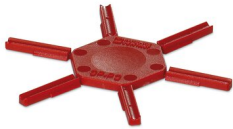
Accessories

CP-PC RD - Coding profile

1701967

<https://www.phoenixcontact.com/us/products/1701967>

Coding profile, for plugging into the coding ribs of the plug at a later date, insulating material, color: Red



EC-PC 6/ 2-ST-BUS - Insulating part

1044822

<https://www.phoenixcontact.com/us/products/1044822>

Insulator cap, Insulating part, color: green, product range: EC-PC 6/..-ST-BUS, width: 26.24 mm



PC 6/ 2-ST-BUS-7,62 - PCB connector

1044740

<https://www.phoenixcontact.com/us/products/1044740>



SF-BIT-TX 15-50 - Screw insert

1212576

<https://www.phoenixcontact.com/us/products/1212576>



Screw bit, Torx®, E6.3-1/4" drive, size: TX 15 x 50 mm, hardened, suitable for holder according to DIN 3126-F6.3/ISO 1173

SF-LTX SET - Tool set

1200162

<https://www.phoenixcontact.com/us/products/1200162>



Offset screwdriver set, Torx, metric, TX 8, 9, 10, 15, 20, 25; 27, 30, 40 mm, 9-piece, BlackLaser surface, in practical holder

PC 6/ 2-ST-BUS-7,62 - PCB connector

1044740

<https://www.phoenixcontact.com/us/products/1044740>



SF-M SET - Tool set

1212543

<https://www.phoenixcontact.com/us/products/1212543>

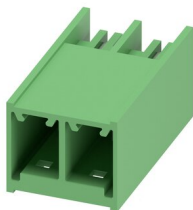
Bit screwdriver set with quick-action chuck, 89 mm long slotted/crosshead (PZ and PH)/hex/Torx® bits, 17-part, in folding belt pouch, contents: PH 1,2,3 x 89; PZ 1,2,3 x 89; SL 1.5 x 5.5 x 89; TX 10-30 x 89; SW 3,4,5,6 x 89



PC 6/ 2-G-7,62 - PCB header

1054546

<https://www.phoenixcontact.com/us/products/1054546>



PCB headers, nominal cross section: 6 mm², color: green, nominal current: 41 A, rated voltage (III/2): 630 V, contact surface: Tin, contact connection type: Pin, number of potentials: 2, number of rows: 1, number of positions: 2, number of connections: 2, product range: PC 6/..-G, pitch: 7.62 mm, mounting: Wave soldering, pin layout: Linear pinning, solder pin [P]: 2.6 mm, number of solder pins per potential: 3, plug-in system: COMBICON PC 6, Pin connector pattern alignment: Standard, locking: without, mounting: without, type of packaging: packed in cardboard

Phoenix Contact 2023 © - all rights reserved
<https://www.phoenixcontact.com>

Phoenix Contact USA
586 Fulling Mill Road
Middletown, PA 17057, United States
(+717) 944-1300
info@phoenixcon.com