

- 1
- 2
- 3
- 4
- 5
- 6
- 7
- 8
- 9
- 10
- 11
- 12
- 13
- 14
- 15
- 16
- 17
- 18

MATERIAL

Aluminium

GRUB SCREW

AISI 304 stainless steel with hexagon socket.

STANDARD EXECUTIONS

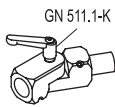
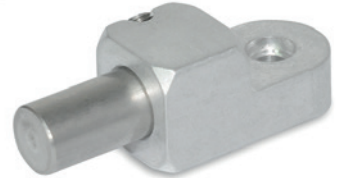
- **MSM-HR-A**: with hole tolerance G8.
 - **MSM-HR-W**: with zinc-plated steel pin tolerance h9.
- Index for descriptions of the standard executions:
- **MT**: natural aluminium, matte finish.
 - **ANB**: anodised aluminium, black colour.

FEATURES AND APPLICATIONS

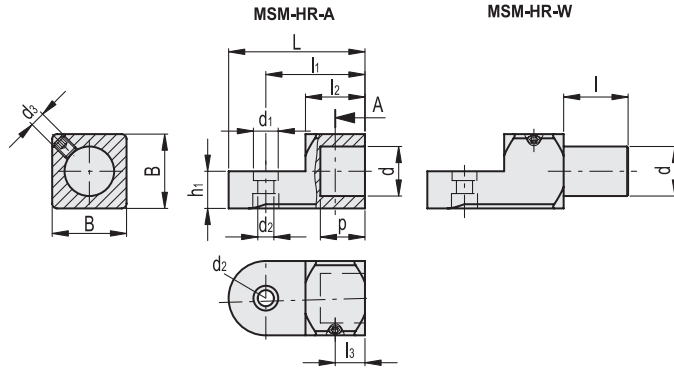
By means of the clamping kit GN 511.1 (see page 923) the MSM-HR connecting clamps can be assembled with connecting clamps MSM-R (see page 916) or with connecting clamps MSM-FR (see page 918) to get various combinations.

KEY TO TABLE DIMENSIONS

d2 = hole for GN 511.1 (see page 923).



Conversion Table	
1 mm = 0.039 inch	
d	
mm	inch
8	0.31
10	0.39
12	0.47
15	0.59
16	0.63
20	0.79



MSM-HR-A

Code	Description	d	d1	d2	d3	L	B	l1	l2	l3	h1	p	d2 Clamping kit	⚖
500711	MSM-HR-8-16-A-ANB	8	7	4.5	M4	30	16	22	13	5.5	8	8	GN 511.1-M4-16-S/K	17
500718	MSM-HR-10-20-A-ANB	10	8.5	5.5	M5	38	20	28	17	7	10	10	GN 511.1-M5-20-S/K	20
500725	MSM-HR-12-20-A-ANB	12	8.5	5.5	M5	38	20	28	17	8	10	12	GN 511.1-M5-20-S/K	20
500732	MSM-HR-15-25-A-ANB	15	10	6.5	M6	46	25	33.5	20	10	12.5	15	GN 511.1-M6-25-S/K	40
500739	MSM-HR-16-25-A-ANB	16	10	6.5	M6	46	25	33.5	20	11	12.5	16	GN 511.1-M6-25-S/K	40
500746	MSM-HR-20-30-A-ANB	20	10	6.5	M6	55	30	40	24	12	15	18	GN 511.1-M6-30-S/K	80
500712	MSM-HR-8-16-A-MT	8	7	4.5	M4	30	16	22	13	5.5	8	8	GN 511.1-M4-16-S/K	17
500719	MSM-HR-10-20-A-MT	10	8.5	5.5	M5	38	20	28	17	7	10	10	GN 511.1-M5-20-S/K	20
500726	MSM-HR-12-20-A-MT	12	8.5	5.5	M5	38	20	28	17	8	10	12	GN 511.1-M5-20-S/K	20
500733	MSM-HR-15-25-A-MT	15	10	6.5	M6	46	25	33.5	20	10	12.5	15	GN 511.1-M6-25-S/K	40
500740	MSM-HR-16-25-A-MT	16	10	6.5	M6	46	25	33.5	20	11	12.5	16	GN 511.1-M6-25-S/K	40
500747	MSM-HR-20-30-A-MT	20	10	6.5	M6	55	30	40	24	12	15	18	GN 511.1-M6-30-S/K	80

METRIC

MSM-HR-W

Code	Description	d	d1	d2	d3	L	B	l	l1	l2	l3	h1	d2 Clamping kit	⚖
500713	MSM-HR-8-16-W-ANB	8	7	4.5	M4	30	16	16	22	13	5.5	8	GN 511.1-M4-16-S/K	20
500720	MSM-HR-10-20-W-ANB	10	8.5	5.5	M5	38	20	17	28	17	7	10	GN 511.1-M5-20-S/K	42
500727	MSM-HR-12-20-W-ANB	12	8.5	5.5	M5	38	20	19	28	17	8	10	GN 511.1-M5-20-S/K	51
500734	MSM-HR-15-25-W-ANB	15	10	6.5	M6	46	25	21	33.5	20	10	12.5	GN 511.1-M6-25-S/K	94
500741	MSM-HR-16-25-W-ANB	16	10	6.5	M6	46	25	24	33.5	20	11	12.5	GN 511.1-M6-25-S/K	106
500748	MSM-HR-20-30-W-ANB	20	10	6.5	M6	55	30	26	40	24	12	15	GN 511.1-M6-30-S/K	180
500714	MSM-HR-8-16-W-MT	8	7	4.5	M4	30	16	16	22	13	5.5	8	GN 511.1-M4-16-S/K	20
500721	MSM-HR-10-20-W-MT	10	8.5	5.5	M5	38	20	17	28	17	7	10	GN 511.1-M5-20-S/K	42
500728	MSM-HR-12-20-W-MT	12	8.5	5.5	M5	38	20	19	28	17	8	10	GN 511.1-M5-20-S/K	51
500735	MSM-HR-15-25-W-MT	15	10	6.5	M6	46	25	21	33.5	20	10	12.5	GN 511.1-M6-25-S/K	94
500742	MSM-HR-16-25-W-MT	16	10	6.5	M6	46	25	24	33.5	20	11	12.5	GN 511.1-M6-25-S/K	106
500749	MSM-HR-20-30-W-MT	20	10	6.5	M6	55	30	26	40	24	12	15	GN 511.1-M6-30-S/K	180

METRIC

Leveling feet and supports