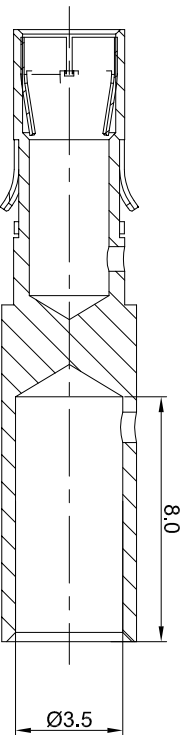
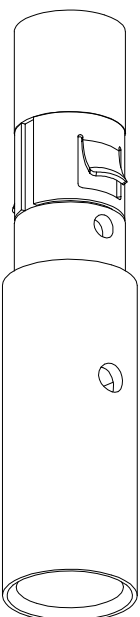
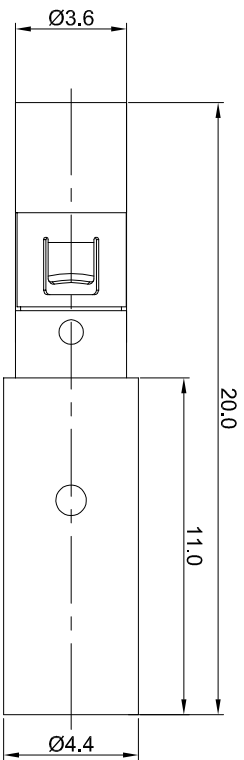


REVISIONS				
REV	ECO	DESCRIPTION	DATE	BY APPR
A1	-	FIRST RELEASE	May/27/2017	Tom TOMMY
A2	-	Modify the current rating	Jul,10,2017	White TOMMY



P/N	CONTACT PLATING(MATING AREA)
MS10B23T	TIN PLATING OVER NICKEL.
MS10B23S	SILVER PLATING OVER NICKEL.
MS10B23F	GOLD FLASH PLATING OVER NICKEL.
MS10B23G5	5µ" GOLD PLATING OVER NICKEL.
MS10B23G10	10µ" GOLD PLATING OVER NICKEL.
MS10B23G15	15µ" GOLD PLATING OVER NICKEL.
MS10B23G30	30µ" GOLD PLATING OVER NICKEL.

- NOTES : (UNLESS OTHERWISE SPECIFIED)
- MATERIAL :
 - CONTACT BODY : COPPER ALLOY.
 - POSITIONING CLIP : COPPER ALLOY.
 - SPECIFICATIONS :
 - CURRENT RATING : 35A(MAX).
 - TERMINATION TYPE : CRIMPING.
 - SUITABLE SOCKET : MP10B23xx.
 - ROHS COMPLIANT.
 - ALL DIMENSIONS ARE FOR REFERENCE USE ONLY.

QUANTITY	PART NUMBER	DESCRIPTION	ITEM
MATERIALS LIST			
UNLESS OTHERWISE SPECIFIED			
1) All dimensions given in millimeters.			
2) Tolerances are as follows:			
1 Pt. DEC 40.30 Fractions .1" to .4"			
3 Pt. DEC 40.08 Angles .1"			
3) Note reference =			
MATERIAL SPECIFICATIONS:		CUSTOMER:	
PROCESS SPECIFICATIONS:		THIS DRAWING IS SUPPLEMENTARY TO THE DRAWING OF THE CONTACT. SPECIFICATIONS AND PERFORMANCE DATA ARE THE PROPERTY OF AMPHENOL CORPORATION. NO PARTS OF REPRODUCTION ARE PERMITTED. ALL MANUFACTURING VARIATIONS.	
NEXT ASST:		SCALE: NONE	
DRAWN: White		DATE: Jul,10,2017	
CHECKED:		ENGINEER:	
APPROVAL:		APPROVAL:	
SIGNATURES		DATE	
Amphenol			
Sine Systems - www.amphenol-sine.com			
44724 Morley Drive			
Clinton Township, MI 48036			
ECONOMATE SOCKET CONTACT		MACHINE,FEMALE,CONTACT 2.5mm	
SIZE	TYPE	DWG NO	REVISION
B	C-	MS10B23xx	A2
SHEET	1	OF	1

TITLE:

ECONOMATE MACHINE FEMALE CONTACT 2.5mm

DWG NO:

MS10B23xx

REV: A2

SH: 1

OF: 1