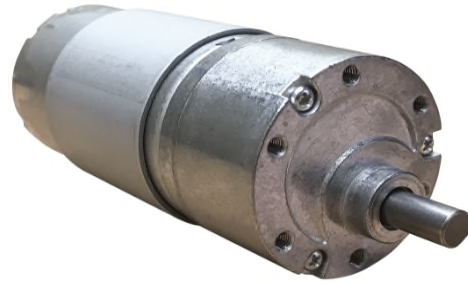




Our Spur Gear Motors are an inline solution providing ample torque output at various speeds. They are best for intermittent duty operation. With endless performance combinations, we have a fully tailored gear motor solution for you.



Contact Us for alternative solutions!

Specifications			
Gearhead Type:	Spur - Offset Shaft	No-Load Speed:	200 rpm (+/- 10%)
Motor Type:	Carbon - Brushed	No-Load Current:	< 250 mA
Rated Voltage:	12V DC	Stall Torque:	37 kg.cm
Rated Speed:	173 rpm	Max. Power:	19 W
Rated Torque:	5 kg.cm	Max. Efficiency:	51%
Rated Current:	1.56 A	Termination Style:	Terminals

