

# OTTA 2,5 - Bolt connection terminal block



0790530

<https://www.phoenixcontact.com/us/products/0790530>

Please be informed that the data shown in this PDF document is generated from our online catalog. Please find the complete data in the user documentation. Our general terms of use for downloads are valid.



Universal terminal block with bolt connection, cross section: 0.1 - 2.5 mm<sup>2</sup>, width: 9 mm, color: Gray

## Commercial data

Item number	0790530
Packing unit	1 pc
Minimum order quantity	1 pc
Sales key	BE45
Product key	BE4513
Catalog page	Page 563 (C-1-2019)
GTIN	4017918005641
Weight per piece (including packing)	12.89 g
Weight per piece (excluding packing)	11.54 g
Customs tariff number	85369010
Country of origin	IN

# OTTA 2,5 - Bolt connection terminal block



0790530

<https://www.phoenixcontact.com/us/products/0790530>

## Technical data

### Product properties

Product type	Bolt connection terminal block
Number of connections	2
Number of rows	1
Potentials	1

### Insulation characteristics

Overvoltage category	III
Degree of pollution	3

### Electrical properties

Rated surge voltage	8 kV
Maximum power dissipation for nominal condition	0.77 W

### Connection data

Number of connections per level	2
Nominal cross section	2.5 mm <sup>2</sup>
Stripping length	The stripping length depends on the specification provided by the cable lug manufacturer.
Connection in acc. with standard	IEC 60947-7-1
Nominal current	24 A
Maximum load current	24 A (with a 2.5 mm <sup>2</sup> conductor cross section)
Nominal voltage	800 V (the nominal voltage applies to insulated cable lugs)
Nominal cross section	2.5 mm <sup>2</sup>

### Cable lug connection DIN 46234:1980-03

Connection in acc. with standard	DIN 46234:1980-03
Cross section	0.1 mm <sup>2</sup> ... 2.5 mm <sup>2</sup>
Cross section range AWG	24 ... 14 (converted acc. to IEC)
Hole diameter	3.2 mm
Width	7.6 mm
Bolt diameter	3 mm
Screw thread	M3
Tightening torque	0.6 ... 0.8 Nm
Identification color of ring cable lugs : red	1.5 mm <sup>2</sup>
Identification color of ring cable lugs : blue	2.5 mm <sup>2</sup>
Connection in acc. with standard	DIN 46237:1970-07
Cross section	0.5 mm <sup>2</sup> ... 2.5 mm <sup>2</sup>
Cross section range AWG	20 ... 14 (converted acc. to IEC)
Hole diameter	3.2 mm
Width	7.6 mm
Bolt diameter	3 mm
Screw thread	M3

# OTTA 2,5 - Bolt connection terminal block



0790530

<https://www.phoenixcontact.com/us/products/0790530>

Tightening torque	0.6 ... 0.8 Nm
-------------------	----------------

## Dimensions

Width	9 mm
End cover width	1.5 mm
Height	43.5 mm
Depth on NS 32	50.5 mm
Depth on NS 35/7,5	45.5 mm
Depth on NS 35/15	53 mm

## Material specifications

Color	gray
Flammability rating according to UL 94	V0
Insulating material group	I
Insulating material	PA
Static insulating material application in cold	-60 °C
Temperature index of insulation material (DIN EN 60216-1 (VDE 0304-21))	130 °C
Relative insulation material temperature index (Elec., UL 746 B)	130 °C
Fire protection for rail vehicles (DIN EN 45545-2) R22	HL 1 - HL 3
Fire protection for rail vehicles (DIN EN 45545-2) R23	HL 1 - HL 3
Fire protection for rail vehicles (DIN EN 45545-2) R24	HL 1 - HL 3
Fire protection for rail vehicles (DIN EN 45545-2) R26	HL 1 - HL 3
Calorimetric heat release NFPA 130 (ASTM E 1354)	28 MJ/kg
Surface flammability NFPA 130 (ASTM E 162)	passed
Specific optical density of smoke NFPA 130 (ASTM E 662)	passed
Smoke gas toxicity NFPA 130 (SMP 800C)	passed

## Electrical tests

### Surge voltage test

Result	Test passed
--------	-------------

### Temperature-rise test

Requirement temperature-rise test	Increase in temperature $\leq 45$ K
Result	Test passed
Result	Test passed

### Power-frequency withstand voltage

Test voltage setpoint	2 kV
Result	Test passed

## Mechanical properties

### Mechanical data

Open side panel	Yes
-----------------	-----

# OTTA 2,5 - Bolt connection terminal block



0790530

<https://www.phoenixcontact.com/us/products/0790530>

## Mechanical tests

### Mechanical strength

Result	Test passed
--------	-------------

### Attachment on the carrier

DIN rail/fixing support	NS 32/NS 35
Test force setpoint	1 N
Result	Test passed

## Environmental and real-life conditions

### Needle-flame test

Time of exposure	30 s
Result	Test passed

### Oscillation/broadband noise

Specification	DIN EN 50155 (VDE 0115-200):2018-05
---------------	-------------------------------------

### Shocks

Specification	DIN EN 50155 (VDE 0115-200):2008-03
---------------	-------------------------------------

### Ambient conditions

Ambient temperature (operation)	-60 °C ... 105 °C (max. short-term operating temperature RTI Elec.)
Ambient temperature (storage/transport)	-25 °C ... 60 °C (for a short time, not exceeding 24 h, -60 °C to +70 °C)
Ambient temperature (assembly)	-5 °C ... 70 °C
Ambient temperature (actuation)	-5 °C ... 70 °C
Permissible humidity (storage/transport)	30 % ... 70 %

## Standards and regulations

Connection in acc. with standard	IEC 60947-7-1
----------------------------------	---------------

## Mounting

Mounting type	NS 35/7,5
	NS 35/15
	NS 32

# OTTA 2,5 - Bolt connection terminal block

0790530

<https://www.phoenixcontact.com/us/products/0790530>



## Drawings

### Circuit diagram



# OTTA 2,5 - Bolt connection terminal block



0790530

<https://www.phoenixcontact.com/us/products/0790530>

## Approvals

To download certificates, visit the product detail page: <https://www.phoenixcontact.com/us/products/0790530>

### DNV

Approval ID: TAE00001CT



### CSA

Approval ID: 13631

	Nominal voltage $U_N$	Nominal current $I_N$	Cross section AWG	Cross section $\text{mm}^2$
	600 V	20 A	22 - 14	-



### UL Recognized

Approval ID: E60425

	Nominal voltage $U_N$	Nominal current $I_N$	Cross section AWG	Cross section $\text{mm}^2$
Use group B				
	600 V	20 A	-	-
Use group C				
	600 V	20 A	-	-



### IECEE CB Scheme

Approval ID: DE1-64022

	Nominal voltage $U_N$	Nominal current $I_N$	Cross section AWG	Cross section $\text{mm}^2$
	800 V	24 A	-	0.2 - 2.5



### EAC

Approval ID: RU C-DE.BL08.B.00540



### LR

Approval ID: LR2041789TA-02



### VDE Zeichengenehmigung

Approval ID: 40017896

	Nominal voltage $U_N$	Nominal current $I_N$	Cross section AWG	Cross section $\text{mm}^2$
	800 V	24 A	-	0.2 - 2.5

# OTTA 2,5 - Bolt connection terminal block



0790530

<https://www.phoenixcontact.com/us/products/0790530>

## Classifications

### ECLASS

ECLASS-11.0	27141120
ECLASS-13.0	27250101

### ETIM

ETIM 8.0	EC000897
----------	----------

### UNSPSC

UNSPSC 21.0	39121400
-------------	----------

# OTTA 2,5 - Bolt connection terminal block



0790530

<https://www.phoenixcontact.com/us/products/0790530>

## Environmental product compliance

China RoHS	Environmentally Friendly Use Period = 50 years
	For information on hazardous substances, refer to the manufacturer's declaration available under "Downloads"



# OTTA 2,5 - Bolt connection terminal block



0790530

<https://www.phoenixcontact.com/us/products/0790530>

## Accessories



Note: Applying some accessories below might limit this product.

### EB 2-OTTA 2,5 - Insertion bridge

3026065

<https://www.phoenixcontact.com/us/products/3026065>

Insertion bridge, pitch: 9 mm, number of positions: 2, color: gray



Max. current carrying capacity: 24 A

### EB 3-OTTA 2,5 - Insertion bridge

3026078

<https://www.phoenixcontact.com/us/products/3026078>

Insertion bridge, pitch: 9 mm, number of positions: 3, color: gray



Max. current carrying capacity: 24 A

# OTTA 2,5 - Bolt connection terminal block

0790530

<https://www.phoenixcontact.com/us/products/0790530>



## EB 4-OTTA 2,5 - Insertion bridge

3026081

<https://www.phoenixcontact.com/us/products/3026081>

Insertion bridge, pitch: 9 mm, number of positions: 4, color: gray



 Max. current carrying capacity: 24 A

---

## EB 5-OTTA 2,5 - Insertion bridge

3026094

<https://www.phoenixcontact.com/us/products/3026094>

Insertion bridge, pitch: 9 mm, number of positions: 5, color: gray



 Max. current carrying capacity: 24 A

# OTTA 2,5 - Bolt connection terminal block



0790530

<https://www.phoenixcontact.com/us/products/0790530>

## EB 6-OTTA 2,5 - Insertion bridge

3026104

<https://www.phoenixcontact.com/us/products/3026104>



Insertion bridge, pitch: 9 mm, number of positions: 6, color: gray

 Max. current carrying capacity: 24 A

---

## EB 7-OTTA 2,5 - Insertion bridge

3026117

<https://www.phoenixcontact.com/us/products/3026117>



Insertion bridge, pitch: 9 mm, number of positions: 7, color: gray

 Max. current carrying capacity: 24 A

## OTTA 2,5 - Bolt connection terminal block

0790530

<https://www.phoenixcontact.com/us/products/0790530>



### EB 10-OTTA 2,5 - Insertion bridge

3026120

<https://www.phoenixcontact.com/us/products/3026120>



Insertion bridge, pitch: 9 mm, number of positions: 10, color: gray

 Max. current carrying capacity: 24 A

---

### D-OTTA 2,5 - End cover

0790569

<https://www.phoenixcontact.com/us/products/0790569>



End cover, length: 43.5 mm, width: 1.5 mm, height: 43.5 mm, color: gray

## OTTA 2,5 - Bolt connection terminal block

0790530

<https://www.phoenixcontact.com/us/products/0790530>



### ATP-OTTA 2,5 - Partition plate

0790572

<https://www.phoenixcontact.com/us/products/0790572>

Partition plate, length: 55.7 mm, width: 1.5 mm, height: 55.7 mm, color: gray



---

### SZS 0,6X3,5 - Screwdriver

1205053

<https://www.phoenixcontact.com/us/products/1205053>

Actuation tool, for ST terminal blocks, insulated, also suitable for use as a bladed screwdriver, size: 0.6 x 3.5 x 100 mm, 2-component grip, with non-slip grip



## OTTA 2,5 - Bolt connection terminal block

0790530

<https://www.phoenixcontact.com/us/products/0790530>



### NS 32 PERF 2000MM-VPE 10 - DIN rail perforated

1201002

<https://www.phoenixcontact.com/us/products/1201002>



DIN rail perforated, acc. to EN 60715, material: Steel, galvanized, passivated with a thick layer, G profile, color: silver, Pack of 10 (20 m)

---

### NS 32 UNPERF 2000MM-VPE 10 - DIN rail, unperforated

1201015

<https://www.phoenixcontact.com/us/products/1201015>



DIN rail, unperforated, acc. to EN 60715, material: Steel, galvanized, passivated with a thick layer, G profile, color: silver, Pack of 10 (20 m)

# OTTA 2,5 - Bolt connection terminal block



0790530

<https://www.phoenixcontact.com/us/products/0790530>

## NS 35/ 7,5 PERF 2000MM - DIN rail perforated

0801733

<https://www.phoenixcontact.com/us/products/0801733>



DIN rail perforated, acc. to EN 60715, material: Steel, galvanized, passivated with a thick layer, Standard profile, color: silver, Pack of 25 (50 m)

---

## NS 35/ 7,5 UNPERF 2000MM - DIN rail, unperforated

0801681

<https://www.phoenixcontact.com/us/products/0801681>



DIN rail, unperforated, acc. to EN 60715, material: Steel, galvanized, passivated with a thick layer, Standard profile, color: silver, Pack of 25 (50 m)

# OTTA 2,5 - Bolt connection terminal block

0790530

<https://www.phoenixcontact.com/us/products/0790530>



## NS 35/ 7,5 WH PERF 2000MM - DIN rail perforated

1204119

<https://www.phoenixcontact.com/us/products/1204119>



DIN rail perforated, acc. to EN 60715, material: Steel, Galvanized, white passivated, Standard profile, color: silver, Pack of 25 (50 m)

---

## NS 35/ 7,5 WH UNPERF 2000MM-VPE 10 - DIN rail, unperforated

1204122

<https://www.phoenixcontact.com/us/products/1204122>



DIN rail, unperforated, acc. to EN 60715, material: Steel, Galvanized, white passivated, Standard profile, color: silver, Pack of 10 (20 m)



# OTTA 2,5 - Bolt connection terminal block

0790530

<https://www.phoenixcontact.com/us/products/0790530>



## NS 35/ 7,5 AL UNPERF 2000MM - DIN rail, unperforated

0801704

<https://www.phoenixcontact.com/us/products/0801704>



DIN rail, unperforated, acc. to EN 60715, material: Aluminum, uncoated, Standard profile, color: silver, Pack of 25 (50 m)

---

## NS 35/ 7,5 ZN PERF 2000MM - DIN rail perforated

1206421

<https://www.phoenixcontact.com/us/products/1206421>



DIN rail perforated, acc. to EN 60715, material: Steel, galvanized, Standard profile, color: silver, Pack of 25 (50 m)

# OTTA 2,5 - Bolt connection terminal block

0790530

<https://www.phoenixcontact.com/us/products/0790530>



## NS 35/ 7,5 ZN UNPERF 2000MM - DIN rail, unperforated

1206434

<https://www.phoenixcontact.com/us/products/1206434>



DIN rail, unperforated, acc. to EN 60715, material: Steel, galvanized, Standard profile, color: silver, Pack of 25 (50 m)

---

## NS 35/ 7,5 CU UNPERF 2000MM-VPE 10 - DIN rail, unperforated

0801762

<https://www.phoenixcontact.com/us/products/0801762>



DIN rail, unperforated, acc. to EN 60715, material: Copper, uncoated, Standard profile, color: copper-colored, Pack of 10 (20 m)

## OTTA 2,5 - Bolt connection terminal block

0790530

<https://www.phoenixcontact.com/us/products/0790530>



## NS 35/ 7,5 CAP - End cap

1206560

<https://www.phoenixcontact.com/us/products/1206560>

DIN rail end piece, for DIN rail NS 35/7.5



---

## NS 35/15 PERF 2000MM - DIN rail perforated

1201730

<https://www.phoenixcontact.com/us/products/1201730>



DIN rail perforated, similar to EN 60715, material: Steel, galvanized, passivated with a thick layer, Standard profile, color: silver, Pack of 25 (50 m)

# OTTA 2,5 - Bolt connection terminal block



0790530

<https://www.phoenixcontact.com/us/products/0790530>

## NS 35/15 UNPERF 2000MM - DIN rail, unperforated

1201714

<https://www.phoenixcontact.com/us/products/1201714>



DIN rail, unperforated, similar to EN 60715, material: Steel, galvanized, passivated with a thick layer, Standard profile, color: silver, Pack of 25 (50 m)

---

## NS 35/15 WH PERF 2000MM - DIN rail perforated

0806602

<https://www.phoenixcontact.com/us/products/0806602>



DIN rail perforated, similar to EN 60715, material: Steel, Galvanized, white passivated, Standard profile, color: white, Pack of 25 (50 m)

# OTTA 2,5 - Bolt connection terminal block

0790530

<https://www.phoenixcontact.com/us/products/0790530>



## NS 35/15 WH UNPERF 2000MM-VPE 10 - DIN rail, unperforated

1204135

<https://www.phoenixcontact.com/us/products/1204135>



DIN rail, unperforated, similar to EN 60715, material: Steel, Galvanized, white passivated, Standard profile, color: silver, Pack of 10 (20 m)

---

## NS 35/15 AL UNPERF 2000MM - DIN rail, unperforated

1201756

<https://www.phoenixcontact.com/us/products/1201756>



DIN rail, unperforated, similar to EN 60715, material: Aluminum, uncoated, Standard profile, color: silver

# OTTA 2,5 - Bolt connection terminal block

0790530

<https://www.phoenixcontact.com/us/products/0790530>



## NS 35/15 ZN PERF 2000MM - DIN rail perforated

1206599

<https://www.phoenixcontact.com/us/products/1206599>



DIN rail perforated, similar to EN 60715, material: Steel, galvanized, Standard profile, color: silver, Pack of 25 (50 m)

---

## NS 35/15 ZN UNPERF 2000MM - DIN rail, unperforated

1206586

<https://www.phoenixcontact.com/us/products/1206586>



DIN rail, unperforated, similar to EN 60715, material: Steel, galvanized, Standard profile, color: silver, Pack of 25 (50 m)

# OTTA 2,5 - Bolt connection terminal block

0790530

<https://www.phoenixcontact.com/us/products/0790530>



## NS 35/15 CU UNPERF 2000MM-VPE 10 - DIN rail, unperforated

1201895

<https://www.phoenixcontact.com/us/products/1201895>



DIN rail, unperforated, similar to EN 60715, material: Copper, uncoated, Standard profile, color: copper-colored, Pack of 10 (20 m)

---

## NS 35/15 CAP - End cap

1206573

<https://www.phoenixcontact.com/us/products/1206573>

DIN rail end piece, for DIN rail NS 35/15



## OTTA 2,5 - Bolt connection terminal block

0790530

<https://www.phoenixcontact.com/us/products/0790530>



## NS 35/15-2,3 UNPERF 2000MM-VPE 10 - DIN rail, unperforated

1201798

<https://www.phoenixcontact.com/us/products/1201798>



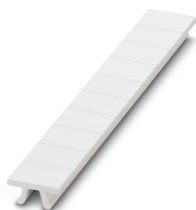
DIN rail, unperforated, acc. to EN 60715, material: Steel, galvanized, passivated with a thick layer, Standard profile 2.3 mm, color: silver, Pack of 10 (20 m)

---

## ZB 8:UNBEDRUCKT - Zack marker strip

1052002

<https://www.phoenixcontact.com/us/products/1052002>



Zack marker strip, Strip, white, unlabeled, can be labeled with: CMS-P1-PLOTTER, PLOTMARK, mounting type: snapped, for terminal block width: 8.2 mm, lettering field size: 10.5 x 8.15 mm, Number of individual labels: 10



## OTTA 2,5 - Bolt connection terminal block

0790530

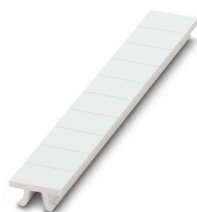
<https://www.phoenixcontact.com/us/products/0790530>



## ZB 8 CUS - Zack marker strip

0825011

<https://www.phoenixcontact.com/us/products/0825011>



Zack marker strip, can be ordered: Strip, white, labeled according to customer specifications, mounting type: snap into tall marker groove, for terminal block width: 8.2 mm, lettering field size: 10.5 x 8.15 mm, Number of individual labels: 10

---

## UC-TM 8 - Marker for terminal blocks

0818072

<https://www.phoenixcontact.com/us/products/0818072>



Marker for terminal blocks, Sheet, white, unlabeled, can be labeled with: BLUEMARK ID COLOR, BLUEMARK ID, BLUEMARK CLED, PLOTMARK, CMS-P1-PLOTTER, mounting type: snapped, for terminal block width: 8.2 mm, lettering field size: 7.6 x 10.5 mm, Number of individual labels: 56

## OTTA 2,5 - Bolt connection terminal block

0790530

<https://www.phoenixcontact.com/us/products/0790530>



### UC-TM 8 CUS - Marker for terminal blocks

0824597

<https://www.phoenixcontact.com/us/products/0824597>



Marker for terminal blocks, can be ordered: by sheet, white, labeled according to customer specifications, mounting type: snap into tall marker groove, for terminal block width: 8.2 mm, lettering field size: 7.6 x 10.5 mm, Number of individual labels: 56

---

### UCT-TM 8 - Marker for terminal blocks

0828740

<https://www.phoenixcontact.com/us/products/0828740>



Marker for terminal blocks, Sheet, white, unlabeled, can be labeled with: TOPMARK NEO, TOPMARK LASER, BLUEMARK ID COLOR, BLUEMARK ID, BLUEMARK CLED, THERMOMARK PRIME, THERMOMARK CARD 2.0, THERMOMARK CARD, mounting type: snapped, for terminal block width: 8.2 mm, lettering field size: 7.6 x 10.5 mm, Number of individual labels: 42

## OTTA 2,5 - Bolt connection terminal block

0790530

<https://www.phoenixcontact.com/us/products/0790530>



## UCT-TM 8 CUS - Marker for terminal blocks

0829616

<https://www.phoenixcontact.com/us/products/0829616>



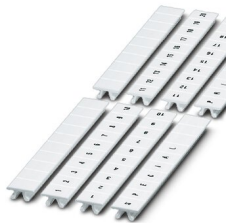
Marker for terminal blocks, can be ordered: by sheet, white, labeled according to customer specifications, mounting type: snap into tall marker groove, for terminal block width: 8.2 mm, lettering field size: 7.6 x 10.5 mm, Number of individual labels: 42

---

## ZB 8,LGS:FORTL.ZAHLEN - Zack marker strip

1052015

<https://www.phoenixcontact.com/us/products/1052015>



Zack marker strip, Strip, white, labeled, can be labeled with: CMS-P1-PLOTTER, printed horizontally: consecutive numbers 1 ... 10, 11 ... 20, etc. up to 91 ... 100, mounting type: snapped, for terminal block width: 8.2 mm, lettering field size: 10.5 x 8.15 mm, Number of individual labels: 10

# OTTA 2,5 - Bolt connection terminal block



0790530

<https://www.phoenixcontact.com/us/products/0790530>

## ZB 8,QR:FORTL.ZAHLEN - Zack marker strip

1052028

<https://www.phoenixcontact.com/us/products/1052028>



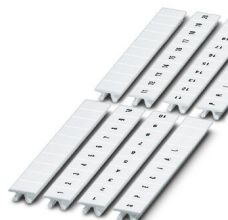
Zack marker strip, Strip, white, labeled, can be labeled with: CMS-P1-PLOTTER, Printed vertically: consecutive numbers 1 ... 10, 11 ... 20, etc. up to 91 ... 100, mounting type: snapped, for terminal block width: 8.2 mm, lettering field size: 10.5 x 8.15 mm, Number of individual labels: 10

---

## ZB 8,LGS:L1-N,PE - Marker for terminal blocks

1052413

<https://www.phoenixcontact.com/us/products/1052413>



Marker for terminal blocks, Strip, white, labeled, can be labeled with: CMS-P1-PLOTTER, horizontal: L1, L2, L3, N, PE, L1, L2, L3, N, PE, mounting type: snapped, for terminal block width: 8.2 mm, lettering field size: 10.5 x 8.15 mm, Number of individual labels: 10

## OTTA 2,5 - Bolt connection terminal block

0790530

<https://www.phoenixcontact.com/us/products/0790530>



### CLIPFIX 35 - End clamp

3022218

<https://www.phoenixcontact.com/us/products/3022218>

Quick mounting end clamp for NS 35/7,5 DIN rail or NS 35/15 DIN rail, with marking option, width: 9.5 mm, color: gray



---

### CLIPFIX 35-5 - End clamp

3022276

<https://www.phoenixcontact.com/us/products/3022276>

Quick mounting end clamp for NS 35/7,5 DIN rail or NS 35/15 DIN rail, with marking option, with parking option for FBS...5, FBS...6, KSS 5, KSS 6, width: 5.15 mm, color: gray



# OTTA 2,5 - Bolt connection terminal block

0790530

<https://www.phoenixcontact.com/us/products/0790530>

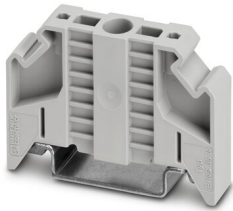


## E/NS 35 N - End clamp

0800886

<https://www.phoenixcontact.com/us/products/0800886>

End clamp, width: 9.5 mm, color: gray



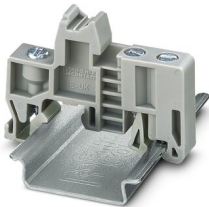
---

## E/UK - End clamp

1201442

<https://www.phoenixcontact.com/us/products/1201442>

End clamp, material: PA, color: gray, Mounting on a DIN rail NS 32 or NS 35



# OTTA 2,5 - Bolt connection terminal block



0790530

<https://www.phoenixcontact.com/us/products/0790530>

## E/UK 1 - End clamp

1201413

<https://www.phoenixcontact.com/us/products/1201413>



End clamps, for supporting the ends of double-level and three-level terminal blocks, width: 10 mm, color: gray

---

Phoenix Contact 2023 © - all rights reserved

<https://www.phoenixcontact.com>

Phoenix Contact USA  
586 Fulling Mill Road  
Middletown, PA 17057, United States  
(+717) 944-1300  
[info@phoenixcon.com](mailto:info@phoenixcon.com)