

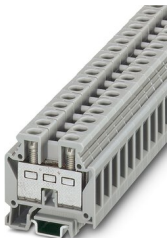
MBK 6/E - Mini feed-through terminal block



0552024

<https://www.phoenixcontact.com/us/products/0552024>

Please be informed that the data shown in this PDF document is generated from our online catalog. Please find the complete data in the user documentation. Our general terms of use for downloads are valid.



Mini feed-through terminal block, nom. voltage: 500 V, nominal current: 41 A, number of connections: 2, connection method: Screw connection, 1 level, Rated cross section: 6 mm², cross section: 0.5 mm² - 10 mm², mounting type: NS 15, color: gray

Your advantages

- Separating disks, partition plates, and test sockets complete the range of accessories
- Clear arrangement thanks to marking of all terminal points
- Space saving thanks to compact design and mounting option on a 15 mm DIN rail
- Easy potential distribution thanks to standardized plug-in bridges

Commercial data

Item number	0552024
Packing unit	1 pc
Minimum order quantity	50 pc
Sales key	BE12
Product key	BE1261
Catalog page	Page 558 (C-1-2019)
GTIN	4017918002893
Weight per piece (including packing)	13.849 g
Weight per piece (excluding packing)	13.024 g
Customs tariff number	85369010
Country of origin	DE

MBK 6/E - Mini feed-through terminal block



0552024

<https://www.phoenixcontact.com/us/products/0552024>

Technical data

Product properties

Product type	Miniature terminal block
Number of connections	2
Number of rows	1
Potentials	1

Insulation characteristics

Overvoltage category	III
Degree of pollution	3

Electrical properties

Rated surge voltage	6 kV
Maximum power dissipation for nominal condition	1.31 W

Connection data

Number of connections per level	2
Nominal cross section	6 mm ²

1 level

Screw thread	M4
Tightening torque	1.5 ... 1.8 Nm
Stripping length	10 mm
Internal cylindrical gage	A5
Connection in acc. with standard	IEC 60947-7-1
Conductor cross section rigid	0.5 mm ² ... 10 mm ²
Cross section AWG	20 ... 8 (converted acc. to IEC)
Conductor cross section flexible	0.5 mm ² ... 6 mm ²
Conductor cross section, flexible [AWG]	20 ... 10 (converted acc. to IEC)
Conductor cross-section flexible (ferrule without plastic sleeve)	0.25 mm ² ... 6 mm ²
Flexible conductor cross section (ferrule with plastic sleeve)	0.25 mm ² ... 6 mm ²
Cross-section with insertion bridge, rigid	6 mm ²
Cross-section with insertion bridge, flexible	4 mm ²
2 conductors with same cross section, solid	0.5 mm ² ... 2.5 mm ²
2 conductors with same cross section, flexible	0.5 mm ² ... 2.5 mm ²
2 conductors with same cross section, flexible, with ferrule without plastic sleeve	0.5 mm ² ... 2.5 mm ²
2 conductors with the same cross section, flexible, with TWIN ferrule with plastic sleeve	0.5 mm ² ... 2.5 mm ²
Nominal current	41 A
Maximum load current	57 A (with 10 mm ² conductor cross section)
Nominal voltage	500 V
Nominal cross section	6 mm ²

MBK 6/E - Mini feed-through terminal block



0552024

<https://www.phoenixcontact.com/us/products/0552024>

Ex data

Rated data (ATEX/IECEx)

Identification	Ex II 2 G Ex eb IIC Gb
Operating temperature range	-60 °C ... 105 °C
Ex-certified accessories	1413049 D-MBK 6/E
	0554019 TP-MBK 6/E
	1205066 SZS 1,0X4,0 VDE
	1421633 E/MK
List of bridges	Fixed bridge / FBI 2- 8 / 0200020
	Fixed bridge / FBI 3- 8 / 0200059
	Fixed bridge / FBI 4- 8 / 0200046
	Fixed bridge / FBI 10- 8 / 0203263
Bridge data	33 A / 6 mm²
Ex temperature increase	40 K (41 A at 6 mm²)
Rated voltage	275 V
for bridging with bridge	275 V
Rated insulation voltage	250 V
output	(Permanent)

Ex level General

Rated current	37 A
Maximum load current	49 A
Contact resistance	0.78 mΩ

Ex connection data General

Torque range	1.5 Nm ... 1.8 Nm
Nominal cross section	6 mm²
Rated cross section AWG	10
Connection capacity rigid	0.5 mm² ... 10 mm²
Connection capacity AWG	20 ... 8
Connection capacity flexible	0.5 mm² ... 6 mm²
Connection capacity AWG	20 ... 10
2 conductors with same cross section, solid	0.5 mm² ... 2.5 mm²
2 conductors with the same cross-section AWG rigid	20 ... 14
2 conductors with same cross section, stranded	0.5 mm² ... 2.5 mm²
2 conductors with the same cross-section AWG flexible	20 ... 14

Dimensions

Width	8.2 mm
End cover width	1.5 mm

Material specifications

Color	gray
Flammability rating according to UL 94	V2

MBK 6/E - Mini feed-through terminal block



0552024

<https://www.phoenixcontact.com/us/products/0552024>

Insulating material group	I
Insulating material	PA
Static insulating material application in cold	-40 °C
Temperature index of insulation material (DIN EN 60216-1 (VDE 0304-21))	125 °C
Relative insulation material temperature index (Elec., UL 746 B)	125 °C

Electrical tests

Surge voltage test

Result	Test passed
--------	-------------

Temperature-rise test

Requirement temperature-rise test	Increase in temperature ≤ 45 K
Result	Test passed
Short-time withstand current 6 mm ²	0.72 kA
Result	Test passed

Power-frequency withstand voltage

Test voltage setpoint	1.89 kV
Result	Test passed

Mechanical properties

Mechanical data

Open side panel	Yes
-----------------	-----

Mechanical tests

Mechanical strength

Result	Test passed
--------	-------------

Attachment on the carrier

DIN rail/fixing support	NS 15
Test force setpoint	5 N
Result	Test passed

Test for conductor damage and slackening

Rotation speed	10 rpm
Revolutions	135
Conductor cross section/weight	0.5 mm ² / 0.3 kg
	6 mm ² / 1.4 kg
	10 mm ² / 2 kg
Result	Test passed

Environmental and real-life conditions

Needle-flame test

Time of exposure	30 s
------------------	------

MBK 6/E - Mini feed-through terminal block



0552024

<https://www.phoenixcontact.com/us/products/0552024>

Result	Test passed
--------	-------------

Oscillation/broadband noise

Specification	DIN EN 50155 (VDE 0115-200):2018-05
---------------	-------------------------------------

Ambient conditions

Ambient temperature (storage/transport)	-25 °C ... 60 °C (for a short time, not exceeding 24 h, -60 °C to +70 °C)
Ambient temperature (assembly)	-5 °C ... 70 °C
Ambient temperature (actuation)	-5 °C ... 70 °C
Permissible humidity (storage/transport)	30 % ... 70 %

Standards and regulations

Connection in acc. with standard	IEC 60947-7-1
----------------------------------	---------------

Mounting

Mounting type	NS 15
---------------	-------

MBK 6/E - Mini feed-through terminal block

0552024

<https://www.phoenixcontact.com/us/products/0552024>



Drawings

Circuit diagram



MBK 6/E - Mini feed-through terminal block





0552024

<https://www.phoenixcontact.com/us/products/0552024>


Approvals


To download certificates, visit the product detail page: <https://www.phoenixcontact.com/us/products/0552024>

 CSA Approval ID: 13631				
	Nominal voltage U_N	Nominal current I_N	Cross section AWG	Cross section mm^2
	300 V	50 A	26 - 8	-

 cULus Recognized Approval ID: E60425				
	Nominal voltage U_N	Nominal current I_N	Cross section AWG	Cross section mm^2
Use group B				
	300 V	50 A	26 - 8	-
Use group C				
	300 V	50 A	26 - 8	-
Use group D				
	600 V	5 A	26 - 8	-

 ATEX Approval ID: KEMA 01ATEX2134U				
--	--	--	--	--

 EAC Ex Approval ID: RU C-DE.HA91.B.00066				
--	--	--	--	--

 IECEx Approval ID: IECEx KEM 07.0008U				
---	--	--	--	--

 CCC Approval ID: 2020322313000629				
---	--	--	--	--

MBK 6/E - Mini feed-through terminal block



0552024

<https://www.phoenixcontact.com/us/products/0552024>

Classifications

ECLASS

ECLASS-11.0	27141120
ECLASS-13.0	27250101

ETIM

ETIM 8.0	EC000897
----------	----------

UNSPSC

UNSPSC 21.0	39121400
-------------	----------

MBK 6/E - Mini feed-through terminal block



0552024

<https://www.phoenixcontact.com/us/products/0552024>

Environmental product compliance

China RoHS	Environmentally friendly use period: unlimited = EFUP-e
	No hazardous substances above threshold values

MBK 6/E - Mini feed-through terminal block



0552024

<https://www.phoenixcontact.com/us/products/0552024>

Accessories



Note: Applying some accessories below might limit this product.

IS-K 10 - Bridge bar isolator

1303337

<https://www.phoenixcontact.com/us/products/1303337>



Bridge bar isolator, color: gray

ISSBI 10- 8 - Bridge

0301534

<https://www.phoenixcontact.com/us/products/0301534>



Bridge, pitch: 8 mm, number of positions: 10, color: silver



Max. current carrying capacity: 43 A

MBK 6/E - Mini feed-through terminal block



0552024

<https://www.phoenixcontact.com/us/products/0552024>

FBI 2- 8 - Fixed bridge

0200020

<https://www.phoenixcontact.com/us/products/0200020>

Fixed bridge, pitch: 8 mm, number of positions: 2, color: silver



FBI 4- 8 - Fixed bridge

0200046

<https://www.phoenixcontact.com/us/products/0200046>

Fixed bridge, pitch: 8 mm, number of positions: 4, color: silver



MBK 6/E - Mini feed-through terminal block

0552024

<https://www.phoenixcontact.com/us/products/0552024>



FB 10- 8-EX - Fixed bridge

3003185

<https://www.phoenixcontact.com/us/products/3003185>

Fixed bridge, pitch: 8 mm, number of positions: 10, color: silver



FB 2- 8-EX - Fixed bridge

3029224

<https://www.phoenixcontact.com/us/products/3029224>

Fixed bridge, pitch: 8 mm, number of positions: 2, color: silver



MBK 6/E - Mini feed-through terminal block



0552024

<https://www.phoenixcontact.com/us/products/0552024>


FBI 10- 8 - Fixed bridge

0203263

<https://www.phoenixcontact.com/us/products/0203263>

Fixed bridge, pitch: 8 mm, number of positions: 10, color: silver



 Max. current carrying capacity: 48 A

FB 10- 8 - Fixed bridge

0202170

<https://www.phoenixcontact.com/us/products/0202170>

Fixed bridge, pitch: 8 mm, number of positions: 10, color: silver



MBK 6/E - Mini feed-through terminal block



0552024

<https://www.phoenixcontact.com/us/products/0552024>

FBI 3- 8 - Fixed bridge

0200059

<https://www.phoenixcontact.com/us/products/0200059>

Fixed bridge, pitch: 8 mm, number of positions: 3, color: silver



EB 2- 8 - Insertion bridge

0202154

<https://www.phoenixcontact.com/us/products/0202154>

Insertion bridge, pitch: 8 mm, number of positions: 2, color: gray



 Max. current carrying capacity: 43 A

MBK 6/E - Mini feed-through terminal block



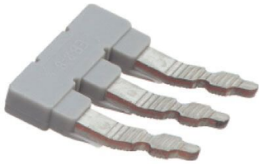
0552024

<https://www.phoenixcontact.com/us/products/0552024>

EB 3- 8 - Insertion bridge

0202141

<https://www.phoenixcontact.com/us/products/0202141>



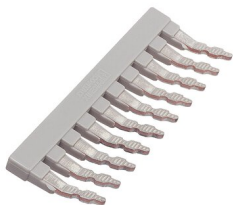
Insertion bridge, pitch: 8 mm, number of positions: 3, color: gray

 Max. current carrying capacity: 43 A


EB 10- 8 - Insertion bridge

0202138

<https://www.phoenixcontact.com/us/products/0202138>



Insertion bridge, pitch: 8 mm, number of positions: 10, color: gray

 Max. current carrying capacity: 43 A

MBK 6/E - Mini feed-through terminal block

0552024

<https://www.phoenixcontact.com/us/products/0552024>



SBRN 2-9 - Switching jumper

1415238

<https://www.phoenixcontact.com/us/products/1415238>



Switching bridge, 2-pos.


SB 2- 8/13 - Switching jumper

0202235

<https://www.phoenixcontact.com/us/products/0202235>



Switching jumper, pitch: 13 mm, number of positions: 2, color: silver

 Max. current carrying capacity: 43 A

MBK 6/E - Mini feed-through terminal block



0552024

<https://www.phoenixcontact.com/us/products/0552024>


EB 4- 8 - Insertion bridge

0202142

<https://www.phoenixcontact.com/us/products/0202142>

Insertion bridge, pitch: 8 mm, number of positions: 4, color: gray



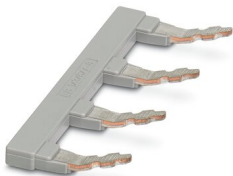
 Max. current carrying capacity: 41 A

EB 1/3/5/7-8 - Insertion bridge

3072340

<https://www.phoenixcontact.com/us/products/3072340>

Insertion bridge, pitch: 16.4 mm, number of positions: 4, pin assignment: 1, 3, 5, 7, length: 24 mm, color: gray



 Max. current carrying capacity: 41 A

MBK 6/E - Mini feed-through terminal block



0552024

<https://www.phoenixcontact.com/us/products/0552024>


EB 1/3/5-8 - Insertion bridge

3072341

<https://www.phoenixcontact.com/us/products/3072341>

Insertion bridge, pitch: 16.4 mm, number of positions: 3, pin assignment: 1,3,5, length: 24 mm, color: gray



 Max. current carrying capacity: 41 A

D-MBK 6/E - End cover

1413049

<https://www.phoenixcontact.com/us/products/1413049>

End cover, length: 35 mm, width: 1.5 mm, height: 30.1 mm, color: gray



MBK 6/E - Mini feed-through terminal block



0552024

<https://www.phoenixcontact.com/us/products/0552024>

WS 5- 8 - Warning label

1004416

<https://www.phoenixcontact.com/us/products/1004416>

Warning plate, with 2 plastic screws, across 5 terminal blocks, pitch 8 mm



WS 4- 8 - Warning label

1004212

<https://www.phoenixcontact.com/us/products/1004212>

Warning plate, with 2 plastic screws, across 4 terminal blocks, pitch 8 mm



MBK 6/E - Mini feed-through terminal block



0552024

<https://www.phoenixcontact.com/us/products/0552024>

WS 3- 8 - Warning label

1004128

<https://www.phoenixcontact.com/us/products/1004128>

Warning plate, with 2 plastic screws, across 3 terminal blocks, pitch 8 mm



KSS 8 - Short-circuit connector

0311540

<https://www.phoenixcontact.com/us/products/0311540>

Short-circuit connector, pitch: 8 mm, number of positions: 2, color: black



MBK 6/E - Mini feed-through terminal block

0552024

<https://www.phoenixcontact.com/us/products/0552024>



TS-KK 3 - Separating plate

2770215

<https://www.phoenixcontact.com/us/products/2770215>



Separating plate, length: 14 mm, width: 0.5 mm, height: 14 mm, color: gray

ATP-MBK - Partition plate

1413227

<https://www.phoenixcontact.com/us/products/1413227>



Partition plate, length: 42.5 mm, width: 2.5 mm, height: 42.5 mm, color: gray

MBK 6/E - Mini feed-through terminal block

0552024

<https://www.phoenixcontact.com/us/products/0552024>



SBS 8:UNBEDRUCKT - Marker card

1007235

<https://www.phoenixcontact.com/us/products/1007235>



Marker card, Card, white, unlabeled, can be labeled with: Marker pen, mounting type: snap into tall marker groove, snap into flat marker groove, for terminal block width: 8 mm, lettering field size: 6 x 8.1 mm

SZS 1,0X4,0 VDE - Screwdriver

1205066

<https://www.phoenixcontact.com/us/products/1205066>



Screwdriver, slot-headed, VDE insulated, size: 1.0 x 4.0 x 100 mm, 2-component grip, with non-slip grip

MBK 6/E - Mini feed-through terminal block

0552024

<https://www.phoenixcontact.com/us/products/0552024>



NS 15 UNPERF 2000MM VPE 10 - DIN rail, unperforated

1401695

<https://www.phoenixcontact.com/us/products/1401695>



DIN rail, unperforated, acc. to EN 60715, material: Steel, galvanized, passivated with a thick layer, Standard profile, color: silver, Pack of 10 (20 m)

NS 15 PERF 2000MM VPE 10 - DIN rail perforated

1401682

<https://www.phoenixcontact.com/us/products/1401682>



DIN rail perforated, acc. to EN 60715, material: Steel, galvanized, passivated with a thick layer, Standard profile, color: silver, Pack of 10 (20 m)

MBK 6/E - Mini feed-through terminal block

0552024

<https://www.phoenixcontact.com/us/products/0552024>



NS 15 AL PERF 2000MM VPE 10 - DIN rail perforated

1401763

<https://www.phoenixcontact.com/us/products/1401763>



DIN rail perforated, acc. to EN 60715, material: Aluminum, uncoated, Standard profile, color: silver, Pack of 10 (20 m)

NS 15 WH PERF 2000MM-VPE 10 - DIN rail perforated

1204096

<https://www.phoenixcontact.com/us/products/1204096>



DIN rail perforated, acc. to EN 60715, material: Steel, Galvanized, white passivated, Standard profile, color: silver, Pack of 10 (20 m)

MBK 6/E - Mini feed-through terminal block

0552024

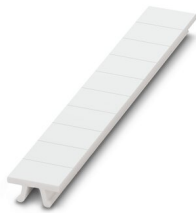
<https://www.phoenixcontact.com/us/products/0552024>



ZB 8:UNBEDRUCKT - Zack marker strip

1052002

<https://www.phoenixcontact.com/us/products/1052002>

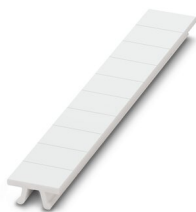


Zack marker strip, Strip, white, unlabeled, can be labeled with: CMS-P1-PLOTTER, PLOTMARK, mounting type: snapped, for terminal block width: 8.2 mm, lettering field size: 10.5 x 8.15 mm, Number of individual labels: 10

ZB 8 CUS - Zack marker strip

0825011

<https://www.phoenixcontact.com/us/products/0825011>



Zack marker strip, can be ordered: Strip, white, labeled according to customer specifications, mounting type: snap into tall marker groove, for terminal block width: 8.2 mm, lettering field size: 10.5 x 8.15 mm, Number of individual labels: 10

MBK 6/E - Mini feed-through terminal block

0552024

<https://www.phoenixcontact.com/us/products/0552024>



UC-TM 8 - Marker for terminal blocks

0818072

<https://www.phoenixcontact.com/us/products/0818072>



Marker for terminal blocks, Sheet, white, unlabeled, can be labeled with: BLUEMARK ID COLOR, BLUEMARK ID, BLUEMARK CLED, PLOTMARK, CMS-P1-PLOTTER, mounting type: snapped, for terminal block width: 8.2 mm, lettering field size: 7.6 x 10.5 mm, Number of individual labels: 56

UC-TM 8 CUS - Marker for terminal blocks

0824597

<https://www.phoenixcontact.com/us/products/0824597>



Marker for terminal blocks, can be ordered: by sheet, white, labeled according to customer specifications, mounting type: snap into tall marker groove, for terminal block width: 8.2 mm, lettering field size: 7.6 x 10.5 mm, Number of individual labels: 56

MBK 6/E - Mini feed-through terminal block



0552024

<https://www.phoenixcontact.com/us/products/0552024>

UCT-TM 8 - Marker for terminal blocks

0828740

<https://www.phoenixcontact.com/us/products/0828740>



Marker for terminal blocks, Sheet, white, unlabeled, can be labeled with: TOPMARK NEO, TOPMARK LASER, BLUEMARK ID COLOR, BLUEMARK ID, BLUEMARK CLED, THERMOMARK PRIME, THERMOMARK CARD 2.0, THERMOMARK CARD, mounting type: snapped, for terminal block width: 8.2 mm, lettering field size: 7.6 x 10.5 mm, Number of individual labels: 42

UCT-TM 8 CUS - Marker for terminal blocks

0829616

<https://www.phoenixcontact.com/us/products/0829616>



Marker for terminal blocks, can be ordered: by sheet, white, labeled according to customer specifications, mounting type: snap into tall marker groove, for terminal block width: 8.2 mm, lettering field size: 7.6 x 10.5 mm, Number of individual labels: 42

MBK 6/E - Mini feed-through terminal block



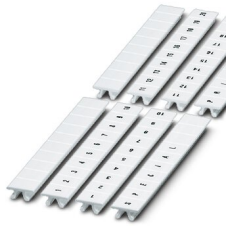
0552024

<https://www.phoenixcontact.com/us/products/0552024>

ZB 8,LGS:FORTL.ZAHLEN - Zack marker strip

1052015

<https://www.phoenixcontact.com/us/products/1052015>

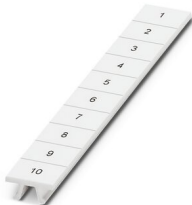


Zack marker strip, Strip, white, labeled, can be labeled with: CMS-P1-PLOTTER, printed horizontally: consecutive numbers 1 ... 10, 11 ... 20, etc. up to 91 ... 100, mounting type: snapped, for terminal block width: 8.2 mm, lettering field size: 10. 5 x 8.15 mm, Number of individual labels: 10

ZB 8,QR:FORTL.ZAHLEN - Zack marker strip

1052028

<https://www.phoenixcontact.com/us/products/1052028>



Zack marker strip, Strip, white, labeled, can be labeled with: CMS-P1-PLOTTER, Printed vertically: consecutive numbers 1 ... 10, 11 ... 20, etc. up to 91 ... 100, mounting type: snapped, for terminal block width: 8.2 mm, lettering field size: 10. 5 x 8.15 mm, Number of individual labels: 10

MBK 6/E - Mini feed-through terminal block



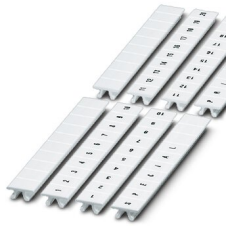
0552024

<https://www.phoenixcontact.com/us/products/0552024>

ZB 8,LGS:L1-N,PE - Marker for terminal blocks

1052413

<https://www.phoenixcontact.com/us/products/1052413>



Marker for terminal blocks, Strip, white, labeled, can be labeled with: CMS-P1-PLOTTER, horizontal: L1, L2, L3, N, PE, L1, L2, L3, N, PE, mounting type: snapped, for terminal block width: 8.2 mm, lettering field size: 10.5 x 8.15 mm, Number of individual labels: 10

E/MBK - End clamp

1401637

<https://www.phoenixcontact.com/us/products/1401637>



End clamp, width: 6.2 mm, color: gray

MBK 6/E - Mini feed-through terminal block



0552024

<https://www.phoenixcontact.com/us/products/0552024>

E/MK - End clamp

1421633

<https://www.phoenixcontact.com/us/products/1421633>

End clamp, width: 6.2 mm, color: gray

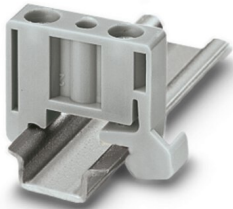


E/MK 1 - End clamp

1421659

<https://www.phoenixcontact.com/us/products/1421659>

End clamp width: 6 mm, color: gray



MBK 6/E - Mini feed-through terminal block

0552024

<https://www.phoenixcontact.com/us/products/0552024>



PSBJ 4/15/6 FARBLOS - Female test connector

0303419

<https://www.phoenixcontact.com/us/products/0303419>



Female test connector, number of positions: 1, color: transparent

PSBJ 4/15/6 WH - Female test connector

0303312

<https://www.phoenixcontact.com/us/products/0303312>



Female test connector, number of positions: 1, color: white

MBK 6/E - Mini feed-through terminal block

0552024

<https://www.phoenixcontact.com/us/products/0552024>



PSBJ 4/15/6 RD - Female test connector

0303325

<https://www.phoenixcontact.com/us/products/0303325>

Female test connector, number of positions: 1, color: red



PSBJ 4/15/6 BU - Female test connector

0303354

<https://www.phoenixcontact.com/us/products/0303354>

Female test connector, number of positions: 1, color: blue



MBK 6/E - Mini feed-through terminal block

0552024

<https://www.phoenixcontact.com/us/products/0552024>



PSBJ 4/15/6 YE - Female test connector

0303367

<https://www.phoenixcontact.com/us/products/0303367>

Female test connector, number of positions: 1, color: yellow



PSBJ 4/15/6 GN - Female test connector

0303370

<https://www.phoenixcontact.com/us/products/0303370>

Female test connector, number of positions: 1, color: green



MBK 6/E - Mini feed-through terminal block

0552024

<https://www.phoenixcontact.com/us/products/0552024>



PSBJ 4/15/6 VT - Female test connector

0303383

<https://www.phoenixcontact.com/us/products/0303383>



Female test connector, number of positions: 1, color: violet

PSBJ 4/15/6 GY - Female test connector

0303396

<https://www.phoenixcontact.com/us/products/0303396>



Female test connector, number of positions: 1, color: gray

MBK 6/E - Mini feed-through terminal block

0552024

<https://www.phoenixcontact.com/us/products/0552024>



PSBJ 4/15/6 BK - Female test connector

0303406

<https://www.phoenixcontact.com/us/products/0303406>



Female test connector, number of positions: 1, color: black

PSB 4/7/6 - Female test connector

0303299

<https://www.phoenixcontact.com/us/products/0303299>



Female test connector, number of positions: 1, color: silver

Phoenix Contact 2023 © - all rights reserved
<https://www.phoenixcontact.com>

Phoenix Contact USA
586 Fulling Mill Road
Middletown, PA 17057, United States
(+717) 944-1300
info@phoenixcon.com