

General Description

The MAX4238 evaluation kit (EV kit) provides a proven design to evaluate the MAX4238 precision, low-noise, low-drift dual-operational amplifier in an 8-pin μ MAX[®] package. The EV kit circuit is preconfigured as noninverting amplifiers, but can be adapted to other topologies by changing a few components.

The EV kit comes with a MAX4238AUA+ installed.

Features

- Accommodates Multiple Op Amp Configurations
- Component Pads Allow for Sallen-Key Filter
- Accommodates Easy-to-Use Components
- Proven PCB Layout
- Fully Assembled and Tested

Quick Start

Required Equipment

- MAX4238 EV kit
- +4.5V to +36V, 10mA DC power supply (PS1)
- Precision voltage source
- Digital multimeter

Procedure

The EV kit is fully assembled and tested. Follow the steps below to verify board operation:

- 1) Verify that all jumpers (JU1–JU3) are in their default positions, as shown in [Table 1](#).
- 2) Set the power supply to +5V. Connect the positive terminal of the power supply to V_{CC} and the negative terminal to GND and V_{SS} .
- 3) Connect the positive terminal of the precision voltage source to INAP. Connect the negative terminal of the precision voltage source to GND. INAM is already connected to GND through jumper JU1.
- 4) Connect the DMM to monitor the voltage on OUTA. With the 10k Ω feedback resistors and 1k Ω series resistors, the gain of the noninverting amplifier is +11V/V.
- 5) Turn on the power supply.
- 6) Apply 100mV from the precision voltage sources. Observe the output at OUTA on the DMM that reads approximately +1.1V.

Note: For dual-supply operation, a $\pm 2.25V$ to $\pm 18V$ can be applied to V_{DD} and V_{SS} , respectively. The rest of the procedure remains the same as that of the single-supply operation.

Ordering Information appears at end of data sheet.

μ MAX is a registered trademark of Maxim Integrated Products, Inc.

Detailed Description of Hardware

The MAX4238 EV kit provides a proven layout for the MAX4238 precision, low-noise, low-drift op amp. The device is a single/dual-supply op amp that is ideal for sensor interfaces, loop-powered systems, and various types of medical and data-acquisition instruments.

The default configuration for the device in the EV kit is single-supply operation in a noninverting configuration. However, the device can operate with a dual supply as long as the voltage across the V_{DD} and V_{SS} pins of the IC do not exceed the absolute maximum ratings. When operating with a single supply, short V_{SS} to GND.

Op-Amp Configurations

The device is a single/dual-supply op amp that is ideal for differential sensing, noninverting amplification, buffering, and filtering. A few common configurations are shown in the next few sections.

The following sections explain how to configure the op amp.

Noninverting Configuration

The EV kit comes preconfigured as a noninverting amplifier. The gain is set by the ratio of R5 and R1. The EV kit comes preconfigured for a gain of +11V/V. The output voltage for the noninverting configuration is given by the equation below:

$$V_{OUTA} = \left(1 + \frac{R5}{R1}\right) [V_{INAP} \pm V_{OS}]$$

Inverting Configuration

To configure the EV kit as an inverting amplifier, remove the shunt on jumper JU1 and install a shunt on jumper JU2 and feed an input signal on the INAM PCB pad.

Differential Amplifier

To configure the EV kit as a differential amplifier, replace R1–R3 and R5 with appropriate resistors. When $R1 = R2$ and $R3 = R5$, the CMRR of the differential amplifier is determined by the matching of the resistor ratios $R1/R2$ and $R3/R5$.

$$V_{OUTA} = \text{GAIN}(V_{INAP} - V_{INAM})$$

where:

$$\text{GAIN} = \frac{R5}{R1} = \frac{R3}{R2}$$

Sallen-Key Configuration

The Sallen-Key topology is ideal for filtering sensor signals with a second-order filter and acting as a buffer. Schematic complexity is reduced by combining the filter and buffer operations. The EV kit can be configured in a Sallen-Key topology by replacing and populating a few components. The Sallen-Key topology can be configured as a unity-gain buffer by replacing R5 with a 0Ω resistor and removing resistor R1. The signal is noninverting and applied to INAP. The filter component pads are R2–R4 and R8, where some have to be populated with resistors and others with capacitors.

Lowpass Sallen-Key Filter: To configure the Sallen-Key as a lowpass filter, remove the shunt from jumper JU1, populate the R2 and R8 pads with resistors, and populate the R3 and R4 pads with capacitors. The corner frequency and Q are then given by:

$$f_C = \frac{1}{2\pi\sqrt{R_{R2}R_{R8}C_{R3}C_{R4}}}$$

$$Q = \frac{\sqrt{R_{R2}R_{R8}C_{R3}C_{R4}}}{C_{R3}(R_{R2} + R_{R8})}$$

Highpass Sallen-Key Filter: To configure the Sallen-Key as a highpass filter, remove the shunt from jumper JU1, populate the R3 and R4 pads with resistors, and populate the R2 and R8 pads with capacitors. The corner frequency and Q are then given by:

$$f_C = \frac{1}{2\pi\sqrt{R_{R3}R_{R4}C_{R2}C_{R8}}}$$

$$Q = \frac{\sqrt{R_{R3}R_{R4}C_{R2}C_{R8}}}{R_{R4}(C_{R2} + C_{R8})}$$

Bandpass Sallen-Key Filter: To configure the Sallen-Key as a bandpass filter, remove the shunt from jumper JU1, replace R8, populate the R3 and R4 pads with resistors, and populate the C8 and R2 pads with capacitors. The corner frequency and Q are then given by:

$$f_C = \frac{1}{2\pi} \sqrt{\frac{R_{R4} + R_{R8}}{C_{C8} C_{R2} R_{R8} R_{R3} R_{R4}}}$$

$$Q = \frac{\sqrt{(R_{R4} + R_{R8}) C_{C8} C_{R2} R_{R8} R_{R3} R_{R4}}}{R_{R4} R_{R8} (C_{C8} + C_{R2}) + R_{R3} C_{R2} (R_{R4} - \frac{R_{R5} R_{R8}}{R_{R1}})}$$

Transimpedance Amplifier (TIA)

To configure the EV kit as a TIA, place a shunt on jumper JU2 and replace R1 with 0Ω resistors. The output voltage of the TIA is the input current multiplied by the feedback resistor:

$$V_{OUT} = -(I_{IN} + I_{BIAS}) \times R_{R5} \pm V_{OS}$$

where:

I_{IN} is the input current source applied at the INAP test point

I_{BIAS} is the input bias current

V_{OS} is the input offset voltage of the op amp

Use a capacitor and 0Ω resistor at location R10 or R17 (and C8, if applicable) to stabilize the op amp by rolling off high-frequency gain due to a large cable capacitance.

Capacitive Loads

Some applications require driving large capacitive loads. The EV kit provides C8 and R6 pads for an optional capacitive-load driving circuit. C8 simulates the capacitive load while R6 acts as an isolation resistor to improve the op amp’s stability at higher capacitive loads. To improve the stability of the amplifier in such cases, replace R6 with a suitable resistor value to improve amplifier phase margin

Table 1. Jumper Descriptions (JU1–JU3)

JUMPER	SHUNT POSITION	DESCRIPTION
JU1	Pin 1	Disconnects INAM from GND.
	1-2*	Connects INA- to GND through R1 for noninverting configuration.
JU2	Pin 1*	Disconnects INAP from GND.
	1-2	Connects INA+ to GND through R2.
JU3	Pin 1	Disconnects INBM from GND.
	1-2*	Connects INB- to GND through R9 for noninverting configuration.
JU4	Pin 1*	Disconnects INBP from GND.
	1-2	Connects INB+ to GND through R10.

*Default position.

Component Information, PCB Layout, and Schematic

See the following links for component information, PCB layout diagrams, and schematic.

- [MAX4238 EV BOM](#)
- [MAX4238 EV PCB Layout](#)
- [MAX4238 EV Schematic](#)

Ordering Information

PART	TYPE
MAX4238EVKIT#	EV Kit

#Denotes RoHS compliant.

Revision History

REVISION NUMBER	REVISION DATE	DESCRIPTION	PAGES CHANGED
0	7/16	Initial release	—

For pricing, delivery, and ordering information, please contact Maxim Direct at 1-888-629-4642, or visit Maxim Integrated's website at www.maximintegrated.com.

Maxim Integrated cannot assume responsibility for use of any circuitry other than circuitry entirely embodied in a Maxim Integrated product. No circuit patent licenses are implied. Maxim Integrated reserves the right to change the circuitry and specifications without notice at any time.

TITLE: Bill of Materials

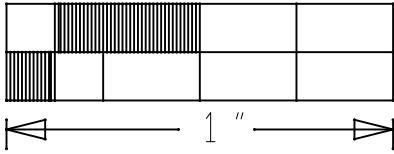
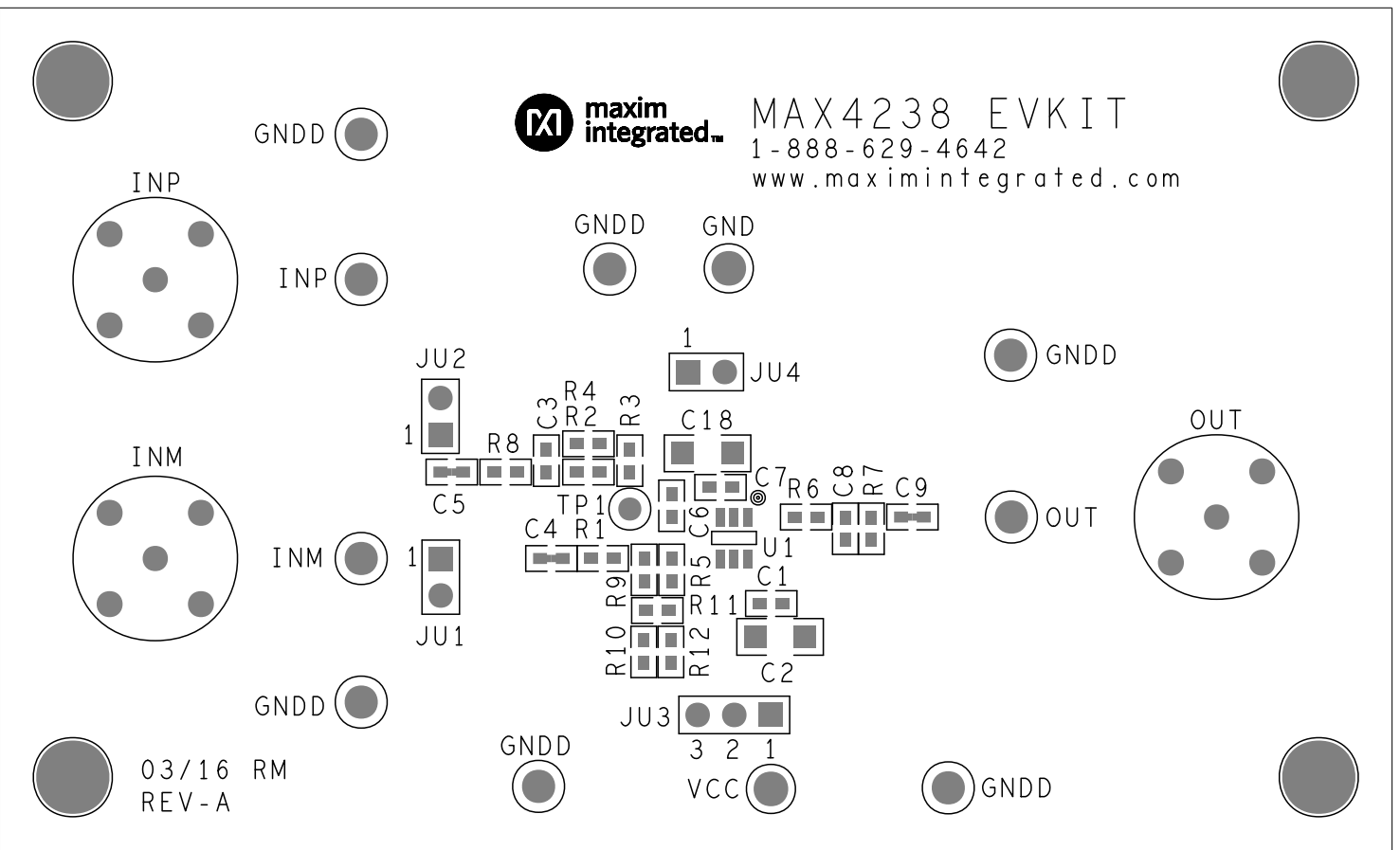
DATE: 03/08/2016

DESIGN: max4238_evkit_a

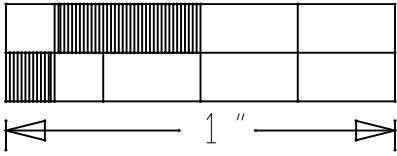
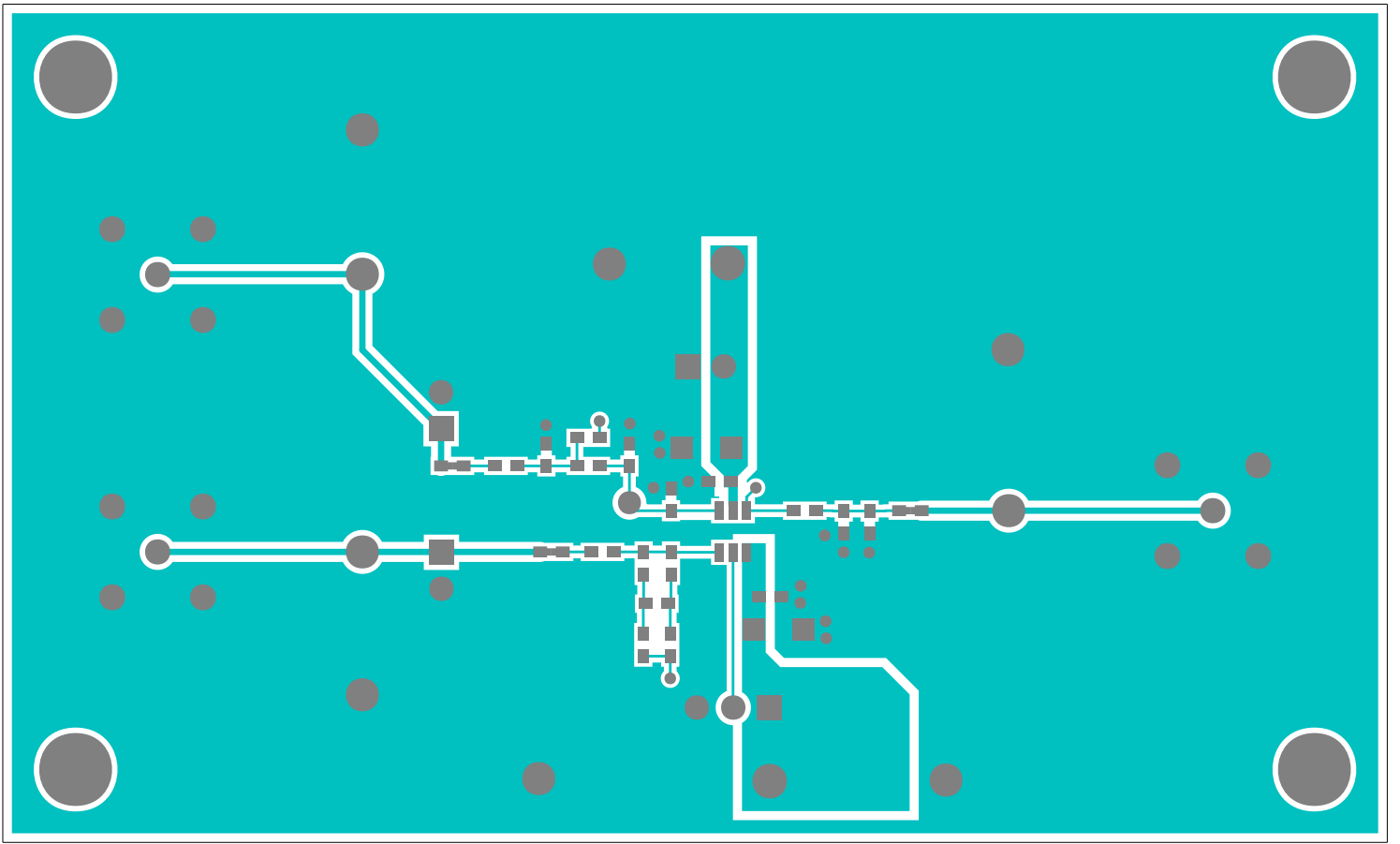
NOTE: DNI--> DO NOT INSTALL ; DNP--> DO NOT PROCURE

ITEM	REF_DES	DNI/D NP	QTY	MFG PART #	MANUFACTURER	VALUE	DESCRIPTION
1	C1, C7	-	2	ECJ-1VB1H104K; GRM188R71H104KA; CGJ3E2X7R1H104K080AA; C1608X7R1H104K080AA	PANASONIC/ MURATA/TDK	0.1UF	CAPACITOR; SMT (0603); CERAMIC CHIP; 0.1UF; 50V; TOL=10%; TG=-55 DEGC TO +125 DEGC; TC=X7R;
2	C2, C18	-	2	GRM31CR71H475KA12	MURATA	4.7UF	CAPACITOR; SMT (1206); CERAMIC CHIP; 4.7UF; 50V; TOL=10%; MODEL=; TG=-55 DEGC TO +125 DEGC; TC=X7R
3	GND, VCC	-	2	5010	KEYSTONE	N/A	TESTPOINT WITH 1.80MM HOLE DIA, RED, MULTIPURPOSE;
4	GNDD, TP0_GND- TP4_GND	-	6	5011 ?		5011	TEST POINT; PIN DIA=0.125IN; TOTAL LENGTH=0.445IN; BOARD HOLE=0.063IN; BLACK; PHOSPHOR BRONZE WIRE SILVER PLATE FINISH;
5	JU1, JU2, JU4	-	3	PCC02SAAN	SULLINS	PCC02SAAN	CONNECTOR; MALE; THROUGH HOLE; BREAKAWAY; STRAIGHT THROUGH; 2PINS; -65 DEGC TO +125 DEGC
6	JU3	-	1	PCC03SAAN	SULLINS	PCC03SAAN	CONNECTOR; MALE; THROUGH HOLE; BREAKAWAY; STRAIGHT THROUGH; 3PINS; -65 DEGC TO +125 DEGC
7	R1	-	1	CRCW06031001FK; ERJ-3EKF1001V	VISHAY DALE; PANASONIC	1K	RESISTOR; 0603; 1K; 1%; 100PPM; 0.10W; THICK FILM
8	R2, R6, R8, R12	-	4	RC1608J000CS; CR0603-J/-000ELF;RC0603JR-070RL	SAMSUNG ELECTRONICS/ BOURNS/ YAGEO PH	0	RESISTOR; 0603; 0 OHM; 5%; JUMPER; 0.10W; THICK FILM
9	R5	-	1	CRCW060310K0FK; 9C06031A1002FK; ERJ-3EKF1002	VISHAY DALE/YAGEO PHICOMP/ PANASONIC	10K	RESISTOR; 0603; 10K; 1%; 100PPM; 0.10W; THICK FILM
10	S1-S4	-	4	STC02SYAN	SULLINS ELECTRONICS CORP.	STC02SYAN	TEST POINT; JUMPER; STR; TOTAL LENGTH=0.256IN; BLACK; INSULATION=PBT CONTACT=PHOSPHOR BRONZE; COPPER PLATED TIN OVERALL

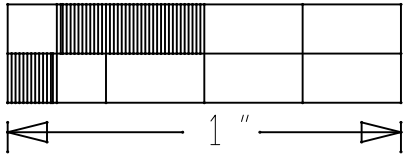
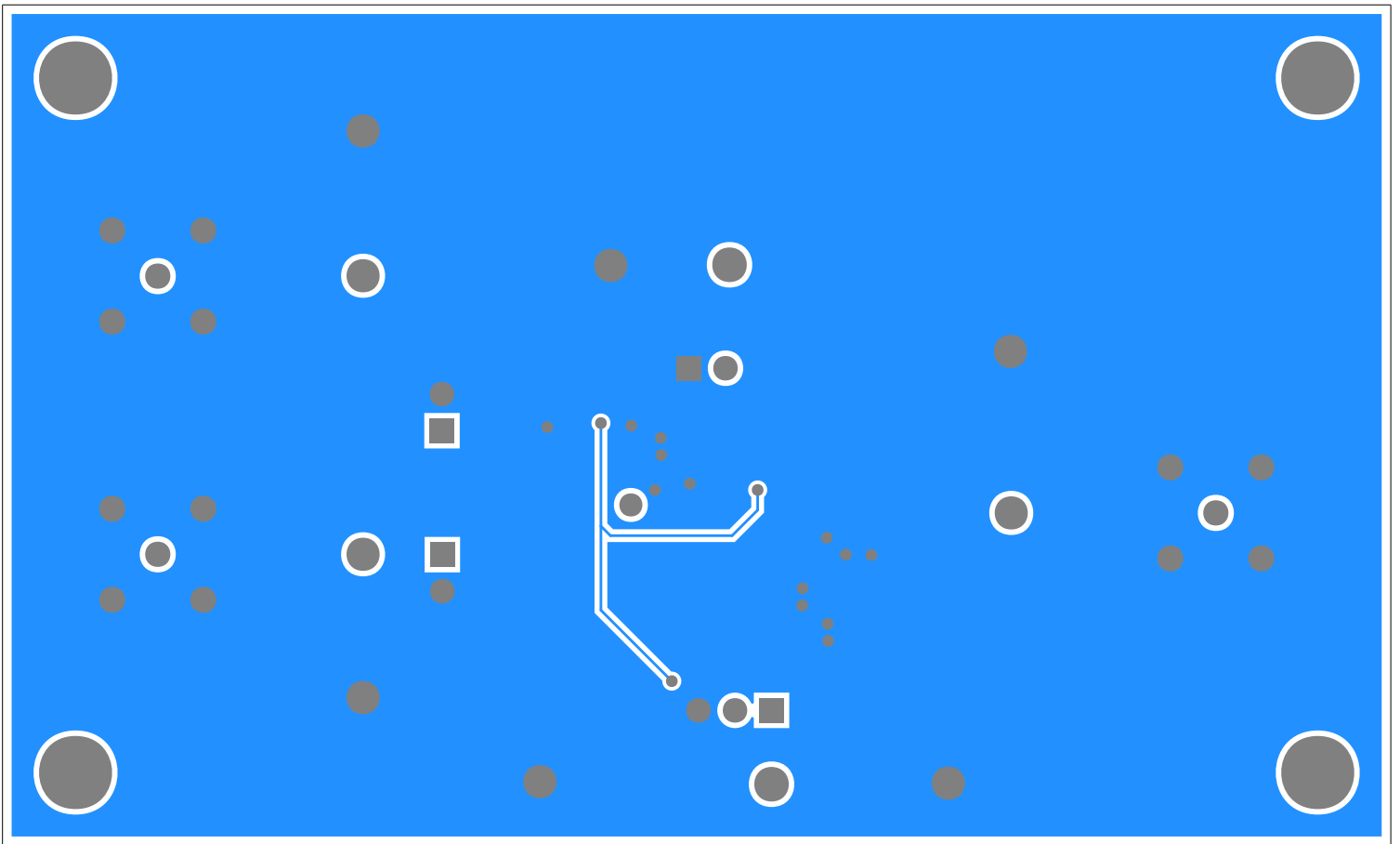
11	TP1	-	1	5000	KEYSTONE	N/A	TEST POINT; PIN DIA=0.1IN; TOTAL LENGTH=0.3IN; BOARD HOLE=0.04IN; RED; PHOSPHOR BRONZE WIRE SILVER PLATE FINISH;
12	TP_INM, TP_OUT, TP_INAP	-	3	5012	?	5012	TEST POINT; PIN DIA=0.125IN; TOTAL LENGTH=0.445IN; BOARD HOLE=0.063IN; WHITE; PHOSPHOR BRONZE WIRE SILVER PLATE FINISH;
13	U1	-	1	MAX4238AUT+	MAXIM	MAX4238AUT+	IC; OPAMP; IC; ULTRA-LOW OFFSET/DRIFT; LOW-NOISE; PRECISION SOT23 AMPLIFIER; SOT23-6
14	C3, C6, C8	DNP	0	N/A	N/A	OPEN	PACKAGE OUTLINE 0603 NON-POLAR CAPACITOR
15	C4, C5, C9	DNP	0	N/A	N/A	SHORT	PACKAGE OUTLINE 0603 NON-POLAR CAPACITOR
16	INM, INP, OUT	DNP	0	CN-BNC-011PG	FIRST TECH ELECTRONICS, CO.	CN-BNC-011PG	CONNECTOR; FEMALE; THROUGH HOLE; BNC JACK; STRAIGHT; 5PINS
17	R3, R4, R7, R9-R11	DNP	0	N/A	N/A	OPEN	PACKAGE OUTLINE 0603 RESISTOR
18	PCB	-	1	MAX4238	MAXIM	PCB	PCB Board:MAX4238 EVALUATION KIT
TOTAL			32				



TOP SILKSCREEN



TOP



BOTTOM

