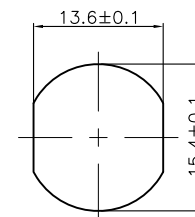
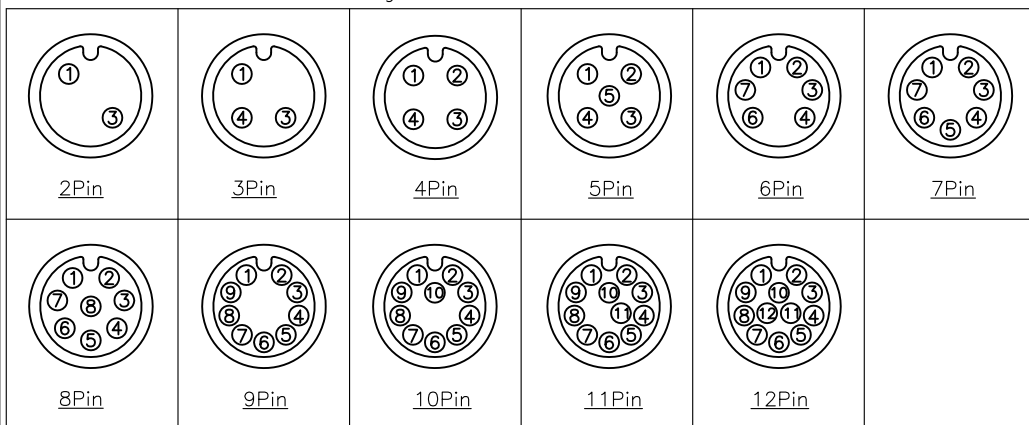


Specifications:
 Current Rating:4A(2~5P);2A(6~8P);1.5A(9~12P)AC/DC
 Voltage Rating:250V(2~4P);60V(5P);30V(6~12P)AC/DC
 Contact Resistance:5m ohm. Max.
 Insulation Resistance:100M ohm. Min.
 Withstanding Voltage:500V AC/Minute
 Waterproof rate:IP67
 Operating Temperature Range:-40°C ~ +100°C
 Material and Finish
 See Table
 How to Order
 M12-XXS-FA-PBSX

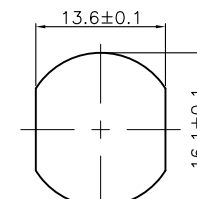


- Panel Lock Thread
- 1:PG9
- 2:M16
- With Shielding
- Panel Mount PCB Dip
- Front Fastened A Coding Die Casting
- Socket
- No. of Contacts
- M12

Pin Assignments Front View



PG9 Recommended Panel CUT-Out
Thickness:4.0mm



M16 Recommended Panel CUT-Out
Thickness:4.0mm

Recommended PCB Layout See Page 2

ITEM	Description	Material	Remark	Q'TY
1	Insulator	Nylon	UL94V-0 Black	1
2	Terminal	Copper Alloy	Gold Plated 1u"	2~12
3	Shell	Zinc Alloy	Nickel Plated 60u"	1
4	Seal ring	Silicone	Red	2
5	Nut	Copper Alloy	PG9 or M16 Nickel Plated 60u"	1

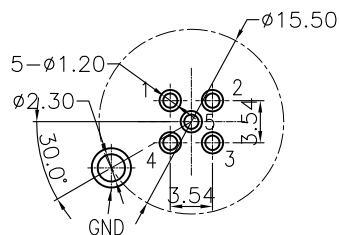
F				DRAWN: ANDREW
E				
D				CHECKED: BILL
C				
B				APPROVAL: ANDREW
A	27-MAR-2021			
REV	DATE	FILE	BY	BILL

GENERAL TOLERANCE: .X=±0.3 .XX=±0.2
UNIT: MM
SCALE: 1:1
SHEET: 1/2
PROJECTION:

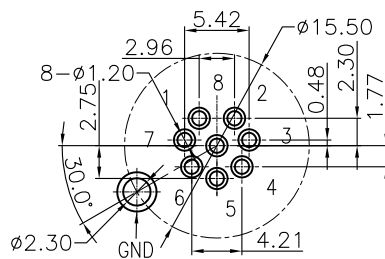
OST
ON-SHORE TECHNOLOGY, INC.

DESCRIPTION:
M12 A CODE SOCKET STRAIGHT DIP TYPE

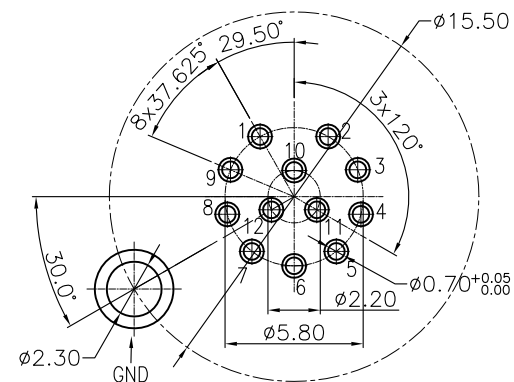
PART NO:
M12-XXS-FA-PBSX




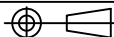
3~5P Recommended PCB Layout
TOL:±0.05mm



6~8P Recommended PCB Layout
TOL:±0.05mm



9~12P Recommended PCB Layout
TOL:±0.05mm
Scale:2:1

F				DRAWN: ANDREW	GENERAL TOLERANCE: .X=±0.3 .XX=±0.2	 ON-SHORE TECHNOLOGY, INC.
E						
D				CHECKED: BILL	UNIT: MM	DESCRIPTION: M12 A CODE SOCKET STRAIGHT DIP TYPE
C					SCALE: 1:1	
B				APPROVAL: ANDREW	SHEET: 2/2	PART NO: M12-XXS-FA-PBSX
A	27-MAR-2021				PROJECTION: 	
REV	DATE	FILE	BY	BILL		

A

B

C

D