

# M.843 | Bridge handles

Technopolymer



- 1
- 2
- 3
- 4
- 5
- 6
- 7
- 8
- 9
- 10
- 11
- 12
- 13
- 14
- 15
- 16
- 17
- 18

## MATERIAL

High-resilience polyamide based (PA) technopolymer, in Elecolors colours, glossy finish.

## STANDARD EXECUTION

Brass bosses, threaded holes.

## FEATURES

This handle is particularly suitable to be produced in light colours: the glossy finish guarantees perfect cleaning. Its solid shape without cavities prevents unhealthy residues from depositing.

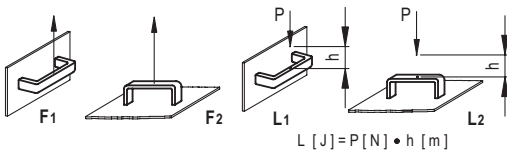
## TECHNICAL DATA

Tensile stress and impact strength: the values F1, F2, L1 and L2 indicated in the table were obtained during breaking tests carried out with the appropriate dynamometric equipment under the test conditions shown in the figure with ambient temperature.

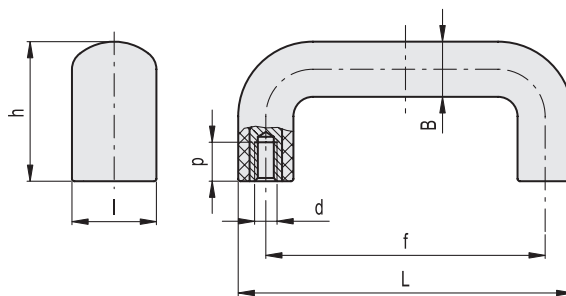
The tests have revealed that the special technopolymer used can absorb very strong shocks, with no damages, thanks to its high-resilience.



ELESA Original design



Conversion Table	
1 mm = 0.039 inch	
L	
mm	inch
103	4.05
138	5.43
200	7.87
322	12.68



\*Complete with colour index, example: 138102 M.843/100 B-M6-C2

- C9 RAL9005
- C2 RAL2004
- C3 RAL7035
- C4 RAL1021
- C5 RAL5024
- C6 RAL3000
- C17 RAL6017



Code C9	Code C2	Code C3	Code C4	Code C5	Code C6	Code C17	Description	L	f	d <sub>H</sub>	h	B	l	p	F1 [N]	F2 [N]	L1 [J]	L2 [J]	⚖️	
138101	138102	138103	138104	138105	138106	138107	M.843/100 B-M6-*	103	86±0.5	M6	46.5	17	26	12	4000	7000	50	120	52	
138121	138122	138123	138124	138125	138126	138127	M.843/140 B-M8-*	138	117±0.5	M8	54	20	30	13	4000	5000	50	120	80	
138141	138142	138143	138144	138145	138146	138147	M.843/200 B-M8-*	200	179±1	M8	62	20	30	13	3000	3500	27	80	105	
138161	138162	138163	138164	138165	138166	138167	M.843/320 B-M8-*	322	300±1	M8	64	22	32	13	2000	3000	25	75	157	

Handles

2