

Nylon Insulated Locking Spade Terminals with Copper Support Sleeve

2216 AWG Nylon Insulated Locking Spade with Copper Support Sleeve

Material: Tin Plated Copper with Butted Seam

Insulation Material: Red 6/6 Nylon with Funnel Entry Copper Support Sleeve

Maximum Electrical Current: 19 Amps

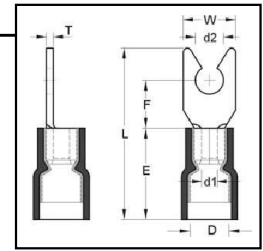
Barrel ID (d1): .067

Maximum Electrical Rating: 75°C, 600V

Max Insulation (D): .177

Material Thickness: .030

Barrel Length (E): .189



HOFFMAN PART NO.	STUD SIZE	DIMENSIONS (INCHES)				UL	TAPE MOUNTED REEL QTY	DIE FOR TAPE MOUNTED	HAND TOOL
		STUD DIAMETER	TONGUE WIDTH	STUD CLEARANCE	LENGTH				
		d2	W	F	L				
FND22163LSR2	6	0.146	0.252	0.256	0.866	Y	1000	3V2216D	YNM2210D
FND22164LSR2	8	0.169	0.319	0.256	0.866	Y	1000	3V2216D	or
FND22165LSR2	10	0.209	0.319	0.256	0.866	Y	1000	3V2216D	Izumi #34

1614 AWG Nylon Insulated Locking Spade with Copper Support Sleeve

Material: Tin Plated Copper with Butted Seam

Insulation Material: Blue 6/6 Nylon with Funnel Entry Copper Support Sleeve

Maximum Electrical Current: 27 Amps

Barrel ID (d1): 0.091

Maximum Electrical Rating: 75°C, 600V

Max Insulation (D): 0.205

Material Thickness: 0.031

Barrel Length (E): .189

HOFFMAN PART NO.	STUD SIZE	DIMENSIONS (INCHES)				UL	TAPE MOUNTED REEL QTY	DIE FOR TAPE MOUNTED	HAND TOOL
		STUD DIAMETER	TONGUE WIDTH	STUD CLEARANCE	LENGTH				
		d2	W	F	L				
FND16143LSR2	6	0.146	0.236	0.256	0.866	Y	1000	3V1614D	YNM2210D
FND16144LSR2	8	0.169	0.319	0.256	0.866	Y	1000	3V1614D	or
FND16145LSR2	10	0.209	0.319	0.256	0.866	Y	1000	3V1614D	Izumi #34

1210 AWG Nylon Insulated Locking Spade with Copper Support Sleeve

Material: Tin Plated Copper with Butted Seam

Insulation Material: Yellow 6/6 Nylon with Funnel Entry Copper Support Sleeve

Maximum Electrical Current: 48 Amps

Barrel ID (d1): .134

Maximum Electrical Rating: 75°C, 600V

Max Insulation (D): .276

Material Thickness: .039

Barrel Length (E): .512

HOFFMAN PART NO.	STUD SIZE	DIMENSIONS (INCHES)				UL	TAPE MOUNTED REEL QTY	DIE FOR TAPE MOUNTED	HAND TOOL
		STUD DIAMETER	TONGUE WIDTH	STUD CLEARANCE	LENGTH				
		D2	W	F	L				
FND12103LSR2	6	0.146	0.327	0.276	0.992	Y	1000	3V1210	YNM2210D
FND12104LSR2	8	0.169	0.327	0.276	0.992	Y	1000	3V1210	or
FND12105LSR2	10	0.209	0.354	0.276	0.992	Y	1000	3V1210	Izumi #5

