



## Automotive LED

[www.everlightamericas.com](http://www.everlightamericas.com)

**EVERLIGHT**  
AMERICAS



EVERLIGHT Electronics Co., Ltd. was founded in 1983 in Taipei, Taiwan led by Chairman Robert Yeh, EVERLIGHT Electronics Co. have over 33 years of R&D experience for reliable capability. With immediate service and an excellent brand reputation, EVERLIGHT has taken top five in the competitive LED market. Our products are manufactured and packed in-house to guarantee maximum quality and service.

EVERLIGHT provides a diverse product portfolio consisting of High Power LEDs, SMD LEDs, Lamps, Lighting Components, LED Lighting Modules, Digital Displays, Opto-couplers and Infrared Components for various applications. Today, EVERLIGHT is a global company with over 6,400 employees based in China, Hong Kong, Japan, Korea, Singapore, Malaysia, India, Germany and U.S.A.

For more information, please visit our website  
[www.everlight.com](http://www.everlight.com)

### *Notice*

The content of this Catalogue is provided for informational purposes only. EVERLIGHT makes no representations about the accuracy, reliability, completeness of the information in this catalogue. EVERLIGHT may, at its sole discretion, revise the specifications, appearance, structures and materials herein without notice for the purpose of improvement. Please contact EVERLIGHT sales should you require more information on a product or its application.

This Catalogue does not contain any guarantee or agreed quality of EVERLIGHT's products or any warranty of merchantability, intellectual property, and fitness for a particular purpose. EVERLIGHT's obligation and responsibilities regarding its products are governed solely by the agreements under which they are sold. Unless otherwise agreed in writing, the information contained herein does not become part of the agreements.

The trademarks and logos ("Trademarks") displayed in this Catalogue are the property of EVERLIGHT and/or its affiliates. Nothing in this Catalogue should be construed as granting any licenses or right to the Trademarks. Without the express written consent of EVERLIGHT, the use of the Trademarks is prohibited.

All text, images, graphics and other materials contained in this Catalogue are subject to the copyright and other intellectual property rights of EVERLIGHT and/or its affiliates.

# INDEX

## Multi Color Application

EL Micro Multi	4
EL Multi Color	5
EL RGB	5

## Interior Application

EL Mini Top View	7
EL Top View	7
EL Side View	8
EL 5630	8
EL Power Top View	9
EL Micro Side View 3011	9
EL Top View 4014	10
EL Top View 3014	10

## Exterior Application

EL Advanced Power Top View	12
EL 3030E	12
EL Power Top View	13
EL Compact 2016	13
EL ALFS-A 1 Chip	14
EL ALFS-A 2 Chip	14
EL ALFS-A 3 Chip	15
EL ALFS-A 4 Chip	15
EL ALFS-A 5 Chip	15
EL Top View Lens 30°	16
EL Top View Lens 60°	16
EL 2319	17
EL 3535E	17

## ADAS Application

IR12-21C / TR8	19
PD12-21B / L458 / TR8	19
HIR83-01B / TR8	19
PD83-01B / L458 / 2G	19
IR89-01C/L447	20
IR91-01C/L491	20
HIR-C19D-1N90/L649-P03/TR	20
HIR-C19D-1N150/L649-P03/TR	21
ALS-PT17-51NB-L369-TR8	21
HIR-C19D-1N90 / L558-P03 / TR	22





**Multi Color  
Application  
Automotive**

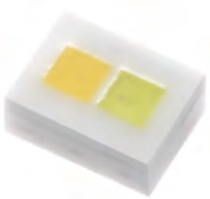






### Multi Color Application

EVERLIGHT provides Multi Color components for interior application to be driven by the need for energy efficiency, automobile styling, and the introduction of new power technologies. We tend to focus on the efficiency, reliability, low working temperature in our components to fit in the automotive market segments. EVERLIGHT is continuously putting effort in new innovation for Multi Color components to fulfill customer aspects.



Qualification: According to AEC-Q101

#### EL Micro Multi

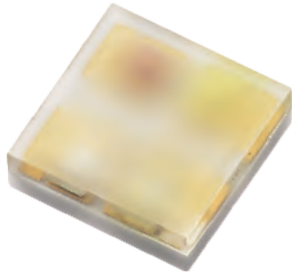
Product Type	Ceramic	Light Color	WW / CW
Package	1216	Brightness Intensity (lm) @Driving Current	WW: 20lm @80mA CW: 20lm @80mA
Dimension LxWxH mm	1.2x1.6x0.7	Application	Ambient Lighting
<b>Features</b>			
Enhanced Corrosion Robustness			
Ceramic Package			
ESD Protection 8KV			
Topr= -40~+110°C			
View angle 120°			

Structure and material depend on customer request.



## Multi Color Application

### EL Multi Color



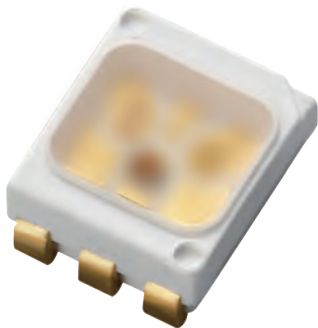
Qualification: According to AEC-Q101

Product Type	Ceramic	Light Color	RGBW / RGBY
Package	2525	Brightness Intensity (lm) @Driving Current	R: 450-900mcd @20mA G: 1120-2240mcd @20mA B: 140-280mcd @20mA W: 3-5lm @20mA Y: 450-900mcd @20mA
Dimension LxWxH mm	2.5x2.5x0.75	Application	Ambient Lighting

Features	
Enhanced Corrosion Robustness	
Ceramic Package	
Consistence of Color Coordinate (White Color)	
Max Current 100mA	
View angle 120°	

Structure and material depend on customer request.

### EL RGB



Qualification: According to AEC-Q101

Product Type	Top View LED	Light Color	RGB
Package	3528	Brightness Intensity (mcd) @Driving Current	R: 560-1120mcd @20mA G: 1120-2240mcd @20mA B: 180-560mcd @20mA
Dimension LxWxH mm	3.5x2.8x1.4	Application	Switch indicators LCD Back Lighting (GPS, DVD player) Ambient Lighting

Features	
Enhanced Corrosion Robustness	
PLCC-6 Package	
ESD Protection 2KV	
Topr= -40~+110°C	
View angle 120°	

Structure and material depend on customer request.





# Interior Application Automotive







## Interior Application

EVERLIGHT provides lighting components for Interior application to be driven by the need for energy efficiency, automobile styling, and the introduction of new power technologies.

### EL Mini Top View



Qualification: According to AEC-Q101

Product Type	Top View LED	Light Color	R / G / B / Y / SkyBlue / IceBlue / W
Package	2214	Brightness Intensity (mcd) @Driving Current	R: 710-1400mcd @20mA G: 710-1400mcd @20mA B: 224-560mcd @20mA Y: 710-1400mcd @20mA SkyBlue: 224-560mcd @10mA IceBlue: 224-710mcd @10mA W: 1400-3550mcd @20mA
Dimension LxWxH mm	2.2x1.4x1.35	Application	Car Infotainment Dashboard Switch indicators LCD Back Lighting (GPS, DVD player) Ambient Lighting

#### Features

- Silver Plated Lead Frame
- PLCC-2 Package
- ESD Protection 2KV
- Topr= -40~+110°C
- View angle 120°

Structure and material depend on customer request.

### EL Top View



Qualification: According to AEC-Q101

Product Type	Top View LED	Light Color	R / G / B / Y / SkyBlue / IceBlue / W
Package	3528	Brightness Intensity (mcd) @Driving Current	R: 710-1400mcd @20mA G: 710-1400mcd @20mA B: 224-560mcd @20mA Y: 710-1400mcd @20mA SkyBlue: 224-560mcd @10mA IceBlue: 224-710mcd @10mA W: 1400-3550mcd @20mA
Dimension LxWxH mm	3.5x2.8x1.85	Application	Car Infotainment Dashboard Switch indicators LCD Back Lighting (GPS, DVD player)

#### Features

- Silver Plated Lead Frame
- RoHS Compliant
- PLCC-2 Package
- ESD Protection 2KV
- Topr= -40~+110°C
- View angle 120°

Structure and material depend on customer request.



## Interior Application



Qualification: According to AEC-Q101

### EL Side View

Product Type	Side View LED	Light Color	R / B / Y / SkyBlue / IceBlue / W
Package	4040	Brightness Intensity (mcd) @Driving Current	R: 710-1400mcd @20mA B: 224-560mcd @20mA Y: 710-1400mcd @20mA SkyBlue: 224-560mcd @10mA IceBlue: 224-710mcd @10mA W: 1400-3550mcd @20mA
Dimension LxWxH mm	4.0x4.0x3.6	Application	Car Infotainment Dashboard Switch Indicators LCD Back Lighting (GPS, DVD Player) Ambient Lighting

Features	
RoHS Compliant	
PLCC-2 Package	
ESD Protection 2KV	
Topr -40~+110°C	
View angle 120°	

Structure and material depend on customer request.



Qualification: According to AEC-Q101

### EL 5630

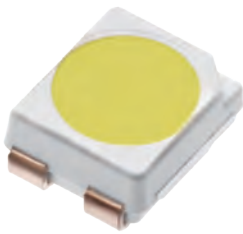
Product Type	Top View LED	Light Color	White
Package	5630	Brightness Intensity (lm) @Driving Current	White: 24-40lm @65mA
Dimension LxWxH mm	5.6x3.0x0.65	Application	Interior Lighting Reading Light

Features	
RoHS Compliant	
Silver Plated Lead Frame	
ESD Protection	
Topr= -40~+110°C	
View angle 120°	

Structure and material depend on customer request.



## Interior Application



Qualification: According to AEC-Q101

### EL Power Top View

Product Type	Top View LED	Light Color	W / R / Y / SR
Package	3528	Brightness Intensity (mcd) @Driving Current	W: 2240-4500mcd @30mA R: 1800-3550mcd @50mA Y: 1400-2800mcd @50mA SR: 1120-1800mcd @50mA
Dimension LxWxH mm	3.5x2.8x1.85	Application	Dashboard

Features	
Enhanced Corrosion Robustness	
RoHS Compliant	
ESD Protection 2KV	
Topr= -40~+110°C	
View angle 120°	

Structure and material depend on customer request.



Qualification: According to AEC-Q101

### EL Micro Side View 3011

Product Type	Side View LED	Light Color	W / B / Y / G / R / YG
Package	3011	Brightness Intensity (mcd) @Driving Current	W: 900-1800mcd @20mA B: 180-450mcd @20mA Y: 560-1120mcd @20mA G: 710-1400mcd @20mA R: 560-1120mcd @20mA YG: 710-1400mcd @20mA
Dimension LxWxH mm	3.0x1.1x1.2	Application	Dashboard Switch

Features	
Enhanced Corrosion Robustness	
RoHS Compliant	
PLCC-2 Package	
ESD Protection 2KV	
Topr= -40~+110°C	
View angle 120°	

Structure and material depend on customer request.



## Interior Application-Automotive TFT Backlight

### EL Top View 4014



Qualification: According to AEC-Q101

Product Type	Top View LED	Light Color	W
Package	4014PCT	Brightness Intensity (Im) @Driving Current	W: 13-26lm @60mA
Dimension LxWxH mm	4.0x1.4x0.65	Application	Back Lighting
<b>Features</b>			
RoHS Compliant			
PLCC Package			
ESD Protection 2KV			
Topr= -40~+100°C			
View angle 120°			

Structure and material depend on customer request.

### EL Top View 3014



Qualification: According to AEC-Q101

Product Type	Top View LED	Light Color	W
Package	3014	Brightness Intensity (Im) @Driving Current	W: 26-32lm @80mA
Dimension LxWxH mm	3.0x1.4x0.6	Application	Back Lighting
<b>Features</b>			
RoHS Compliant			
PLCC Package			
ESD Protection 2KV			
Topr= -40~+100°C			
View angle 120°			

Structure and material depend on customer request.



**Exterior  
Application**  
Automotive







## Exterior Application

EVERLIGHT provides lighting components for Exterior application to be driven by the need for energy efficiency, automobile styling, and the introduction of new power technologies. We tend to focus on the efficiency, reliability, low working temperature in our components to fit in the automotive market segments. EVERLIGHT is continuously putting effort in new innovation for Exterior components to fulfill customer aspects.

### EL Advanced Power Top View



Qualification: According to AEC-Q101

Product Type	Top View LED	Light Color	W / R / Phosphor Yellow / Yellow / Super Red
Package	3433	Brightness Intensity (mcd) @Driving Current	W: 7100-14000mcd @150mA R: 4500-9000mcd @150mA Phosphor Yellow: 5600-11200mcd @150mA Yellow: 3550-7100mcd @150mA Super Red: 2800-7100mcd @150mA
Dimension LxWxH mm	3.4x3.3x1.8	Application	Position Lamp Stop Lamp Turning Light CHMSL
<b>Features</b>			
Enhanced Corrosion Robustness			
RoHS Compliant			
ESD Protection 8KV			
Topr= -40~+110°C			
View angle 120°			

Structure and material depend on customer request.

### EL 3030E



Qualification: According to AEC-Q101

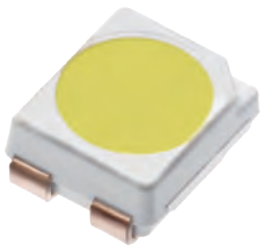
Product Type	EMC	Light Color	W / R / Phosphor Yellow
Package	3030	Brightness Intensity (lm) @Driving Current	W: 100-140lm @350mA R: 39-70lm @350mA Phosphor Yellow: 80-100lm @350mA
Dimension LxWxH mm	3.0x3.0x0.8	Application	DRL Fog Lamp Stop Lamp Turning Light
<b>Features</b>			
RoHS Compliant			
EMC Package			
ESD Protection 8KV			
Topr= -40~+125°C			
View angle 120°			

Structure and material depend on customer request.



## Exterior Application

### EL Power Top View



Qualification: According to AEC-Q101

Product Type	Top View LED	Light Color	W / R / Y / SR
Package	3528	Brightness Intensity (mcd) @Driving Current	W: 2240-4500mcd @30mA R: 1800-3550mcd @50mA Y: 1400-2800mcd @50mA SR: 1120-1800mcd @50mA
Dimension LxWxH mm	3.5x2.8x1.85	Application	Turning Light Stop Lamp

#### Features

- Enhanced Corrosion Robustness
- RoHS Compliant
- ESD Protection 8KV
- Topr= -40~+110°C
- View angle 120°

Structure and material depend on customer request.

### EL Compact 2016



Qualification: According to AEC-Q101

Product Type	Ceramic	Light Color	W / R / Phosphor Yellow
Package	2016	Brightness Intensity (lm) @Driving Current	W: 160-225lm @700mA R: 60-130 @700mA Phosphor Yellow: 100-180 @700mA
Dimension LxWxH mm	2.04x1.64x0.75	Application	DRL Fog Lamp Turning Light Stop Light

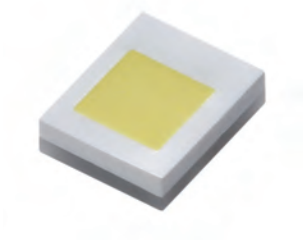
#### Features

- Enhanced Corrosion Robustness
- Ceramic Package
- ESD Protection 8KV
- Topr= -40~+125°C
- View angle 120°

Structure and material depend on customer request.



## Exterior Application



Qualification: According to AEC-Q101

### EL ALFS-A 1 Chip

Product Type	Ceramic	Light Color	W
Package	2016	Brightness Intensity (lm) @Driving Current	230lm @700mA
Dimension LxWxH mm	2.0x1.6x0.8	Application	DRL Head Lamp

Features			
Enhanced Corrosion Robustness			
RoHS Compliant			
Ceramic Package			
ESD Protection 15KV			
Topr= -40~+125°C			
View angle 120°			

Structure and material depend on customer request.



Qualification: According to AEC-Q101

### EL ALFS-A 2 Chip

Product Type	Ceramic	Light Color	W
Package	2 chips	Brightness Intensity (lm) @Driving Current	600lm @1000mA
Dimension LxWxH mm	2.9x2.4x0.8	Application	Head Lamp

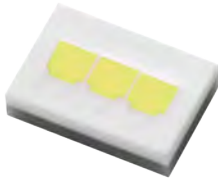
Features			
Enhanced Corrosion Robustness			
RoHS Compliant			
Ceramic Package			
ESD Protection 15KV			
Topr= -40~+125°C			
View angle 120°			

Structure and material depend on customer request.



## Exterior Application

### EL ALFS-A 3 Chip



Qualification: According to AEC-Q101

Product Type	Ceramic	Light Color	W
Package	3 chips	Brightness Intensity (lm) @Driving Current	900lm @1000mA
Dimension LxWxH mm	4.0x2.4x0.8	Application	Head Lamp

#### Features

Enhanced Corrosion Robustness

RoHS Compliant

Ceramic Package

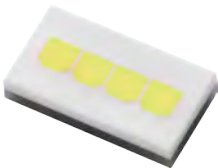
ESD Protection 15KV

Topr= -40~+125°C

View angle 120°

Structure and material depend on customer request.

### EL ALFS-A 4 Chip



Qualification: According to AEC-Q101

Product Type	Ceramic	Light Color	W
Package	4 chips	Brightness Intensity (lm) @Driving Current	1200lm @1000mA
Dimension LxWxH mm	6.2x3.2x0.8	Application	Head Lamp

#### Features

Enhanced Corrosion Robustness

RoHS Compliant

Ceramic Package

ESD Protection 15KV

Topr= -40~+125°C

View angle 120°

Structure and material depend on customer request.

### EL ALFS-A 5 Chip



Qualification: According to AEC-Q101

Product Type	Ceramic	Light Color	W
Package	5 chips	Brightness Intensity (lm) @Driving Current	1500lm @1000mA
Dimension LxWxH mm	6.2x3.2x0.8	Application	Head Lamp

#### Features

Enhanced Corrosion Robustness

RoHS Compliant

Ceramic Package

ESD Protection 15KV

Topr= -40~+125°C

View angle 120°

Structure and material depend on customer request.



## Exterior Application

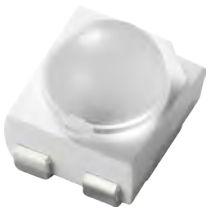


Qualification: According to AEC-Q101

### EL Top View Lens 30°

Product Type	Top View Lens LED	Light Color	R / G / B / Y / SkyBlue / IceBlue / W
Package	3528	Brightness Intensity (mcd) @Driving Current	R:30°Lens 5600-18000mcd @50mA Y:30°Lens 5600-18000mcd @50mA
Dimension LxWxH mm	3.5x2.8x3.35	Application	STOP Lamp Turning Light CHMSL
<b>Features</b>			
Silver Plated Lead Frame			
RoHS Compliant			
PLCC3			
ESD Protection 2KV			
Topr= -40~+110°C			

Structure and material depend on customer request.



Qualification: According to AEC-Q101

### EL Top View Lens 60°

Product Type	Top View Lens LED	Light Color	R / G / B / Y / SkyBlue / IceBlue / W
Package	3528	Brightness Intensity (mcd) @Driving Current	R:60°Lens 3550-11200mcd @50mA Y:60°Lens 2800-9000mcd @50mA
Dimension LxWxH mm	3.5x2.8x3.35	Application	STOP Lamp Turning Light CHMSL
<b>Features</b>			
Silver Plated Lead Frame			
RoHS Compliant			
PLCC3			
ESD Protection 2KV			
Topr= -40~+110°C			

Structure and material depend on customer request.



## Exterior Application

### EL 2319



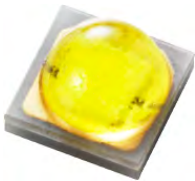
Product Type	Ceramic	Light Color	W
Package	1 chips	Brightness Intensity (lm) @Driving Current	225-325lm @700mA
Dimension LxWxH mm	2.3x1.9x0.75	Application	DRL

#### Features

Compact Size
Wide view angle 140 degree
Good thermal conductivity with ceramic substrate
White LED has High reliability without wire bonding
Protection diode included
AEC-Q101 Qualified

Structure and material depend on customer request.

### EL 3535E



Product Type	Ceramic	Light Color	W
Package	1 chips	Brightness Intensity (lm) @Driving Current	90-140lm @350mA
Dimension LxWxH mm	3.5x3.5x2.3	Application	DRL Turning Light Stop Lamp

#### Features

Ceramic based package
Strong Shearing force of Lens
Good thermal conductivity with ceramic substrate
Protection diode included
AEC-Q101 Qualified

Structure and material depend on customer request.



# ADAS Application Automotive







## ADAS Application

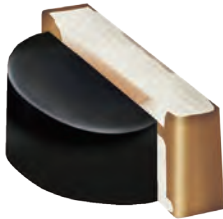
### IR12-21C / TR8



Size (LxWxH mm)	3x1x2	I <sub>e</sub> _Min (mW/sr)	0.5
λ <sub>p</sub> (nm)	940	I <sub>e</sub> _Typ (mW/sr)	0.8
V <sub>F</sub> Typ (V)	1.2	Viewing Angle (°)	150
V <sub>F</sub> Max (V)	1.5		

Structure and material depend on customer request.

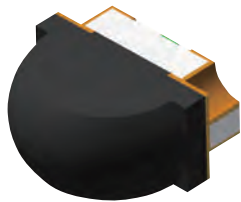
### PD12-21B / L458 / TR8



Size (LxWxH mm)	3x2x1	I <sub>L</sub> Typ (μA)	1.5
λ <sub>p</sub> (nm)	940	BVR_Min.(V)	33
I <sub>L</sub> Min (μA)	0.7	ID_Max (nA)	10

Structure and material depend on customer request.

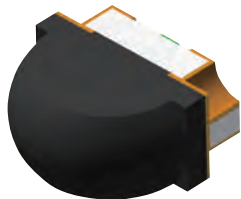
### HIR83-01B / TR8



Size (LxWxH mm)	1.6x0.8x1.52	I <sub>e</sub> _Min (mW/sr)	2
λ <sub>p</sub> (nm)	850	I <sub>e</sub> _Typ (mW/sr)	5
V <sub>F</sub> Typ (V)	1.4	Viewing Angle (°)	100(X) 40(Y)
V <sub>F</sub> Max (V)	1.7		

Structure and material depend on customer request.

### PD83-01B / L458 / 2G



Size (LxWxH mm)	1.6x0.8x1.52	I <sub>L</sub> Typ (μA)	2.4
λ <sub>p</sub> (nm)	940	BVR_Min.(V)	32
I <sub>L</sub> Min (μA)	1.14	ID_Max (nA)	10

Structure and material depend on customer request.

## ADAS Application

### IR89-01C/L447



Size (LxWxH mm)	3.1x2.25x1.6	le_Min (mW/sr)	40
$\lambda_p$ (nm)	940	le_Typ (mW/sr)	60
$V_F$ Typ (V)	1.8	Viewing Angle (°)	30
$V_F$ Max (V)	2.2		

Structure and material depend on customer request.

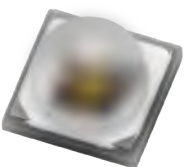
### IR91-01C/L491



Size (LxWxH mm)	2.2x1.95x0.9	le_Min (mW/sr)	25
$\lambda_p$ (nm)	940	le_Typ (mW/sr)	50
$V_F$ Typ (V)	1.4	Viewing Angle (°)	40
$V_F$ Max (V)	1.7		

Structure and material depend on customer request.

### HIR-C19D-1N90/L649-P03/TR



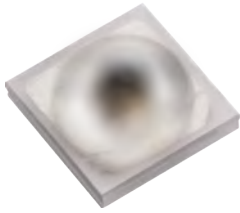
Size (LxWxH mm)	3.5x3.5x2.36	le_Typ (mW/sr) (If = 350mA)	200
$\lambda_p$ (nm)	850	Power_Typ (mW) (If = 350mA)	500
$V_F$ Typ (V) (If = 350mA)	3.0	Viewing Angle (°)	90

Structure and material depend on customer request.



## ADAS Application

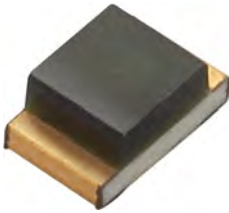
HIR-C19D-1N150/L649-P03/TR



Size (LxWxH mm)	3.5x3.5x2.36	I <sub>e</sub> _Typ (mW/sr) (I <sub>f</sub> = 350mA)	100
λ <sub>p</sub> (nm)	850	Power_Typ (mW) (I <sub>f</sub> = 350mA)	400
V <sub>F</sub> Typ (V) (I <sub>f</sub> = 350mA)	2.7	Viewing Angle (°)	150

Structure and material depend on customer request.

ALS-PT17-51NB-L369-TR8



Size (LxWxH mm)	2.0x1.25x0.8	I <sub>D</sub> _Typ nA (V <sub>CE</sub> =5V, E <sub>v</sub> =0Lux)	2
λ <sub>p</sub> (nm)	580	I <sub>L</sub> _Typ (μA) (V <sub>CE</sub> =5V, E <sub>v</sub> =5 Lux)	0.55
Range of λ (nm)	400-700	Supply voltage (V)	2.5-5.5
Rise/ Fall time (ms) V <sub>CE</sub> =5V R <sub>L</sub> =7.5 KΩ	0.13/0.15		

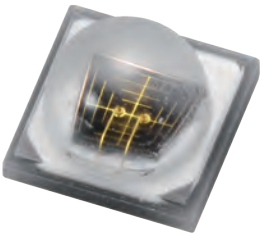
Structure and material depend on customer request.





ADAS Application

HIR-C19D-1N90 / L558-P03 / TR



Size (LxWxH mm)	3.5x3.5x2.36	le_Typ (mW/sr) (If = 350mA)	170
$\lambda_p$ (nm)	850	Power_Typ (mW) (If = 350mA)	350
VF_Typ (V) (If = 350mA)	3.1	Viewing Angle (°)	90

Structure and material depend on customer request.

# EVERLIGHT

# EVERLIGHT



**ASIA****CHINA****CHINA, HONG KONG**

EVERLIGHT ELECTRONICS CO., LTD.  
Units 1606-1610, 16/F., Prosperity Place,  
6 Shing Yip Street, Kwun Tong, Kowloon,  
Hong Kong  
TEL: +852-23880602  
FAX: +852-23881127, 23843092

**CHINA, SHENZHEN**

EVERLIGHT ELECTRONICS CO., LTD.  
Room 1101-1102,3A Building,Period 1,  
Tian An Cloud Park,NO.2018,Xuegang Road,  
Bantian Sub-District,LongGangDistrict,  
ShenZhen,GuangdongProvince,P,R,C  
Postcode: 518116  
TEL: +86-0755-2163-8620  
FAX: +86-0755-2163-8764

**CHINA, GUANGZHOU**

EVERLIGHT ELECTRONICS CO., LTD.  
1501 15 F1.,No.266 Xi Huan Road,  
Sha Tou Street, Panyu District,  
Guangzhou, China  
Postcode: 511400  
TEL: +86-(0)20-84663392  
FAX: +86-(0)20-84663372

**CHINA, SUZHOU**

EVERLIGHT ELECTRONICS CO., LTD.  
5F, Wanrong International Building, NO. 3158,  
Renmin Rd., Gusu Dist., Suzhou City,  
Jiangsu Province, P.R. China  
Postcode: 215011  
TEL: +86- 512-88605888  
FAX: +86- 512-85188151

**CHINA, QINGDAO**

EVERLIGHT ELECTRONICS CO., LTD.  
Room 317 (Building Dingdu), No. 133, Rd.  
Fuzhou-North, District Shibei, Qingdao,  
Shandong, China  
TEL: +86-532-8091-6675  
FAX: +86-532-8079-7372

**CHINA, TIANJIN**

EVERLIGHT ELECTRONICS CO., LTD  
Room 505,Michael kuan in the valley of e  
Imagination world, No 37. NanKai Three Road,  
NanKai District,TianJin,China  
Postcode: 300100  
TEL: +86-22-26351122, 26351133

全国免费电话 : 400-6258-289

**KOREA**

EVERLIGHT OPTOELECTRONICS  
KOREA CO., LTD.  
7F S706-1 Garden 5 Works Choongmin Rd52.,  
Songpa-gu, Seoul, KOREA.  
TEL: +82-2-2047-3960  
FAX: +82-2-2047-3961  
EMAIL: terrychoi@everlight.com

**JAPAN, TOKYO**

EVERLIGHT JAPAN CORPORATION  
4F MITA SUN BLDG., 1-3-35 MITA,  
MINATO-KU, TOKYO, 108-0073, JAPAN  
TEL: +81-3-5439-9296  
FAX: +81-3-5439-9288  
EMAIL: elj@everlight.com

**JAPAN, KYOTO**

EVERLIGHT JAPAN CORPORATION  
7F, MITSUISEIMEI KYOTO YAMASHINA BLDG.  
46-1, TAKEHANADOUNOMAECCHOU,  
YAMASHINA KU, KYOTO, 607-8085, JAPAN  
TEL: +81-75-584-6070  
FAX: +81-75-584-6080  
EMAIL: everlightjapan@everlight.com

**INDIA, BANGALORE**

EVERLIGHT ELECTRONICS INDIA PVT LTD  
Suit No. 3, 2nd Floor  
Alpha Block. Sigma Soft Tech Park.  
Varthur Kodi. Whitefield Main Road.  
Bangalore: 560066  
TEL: +91-080-41633111, +91-080-41623111  
FAX: +91-080-41622111  
EMAIL: salesindia@everlight.com

**INDIA, DELHI**

EVERLIGHT ELECTRONICS INDIA PRIVATED LTD.  
Regus Green Boulevard  
Level-5, Tower C, 3C Green Boulevard, Block B,  
Sec-62, Noida:201301  
TEL: +91-120-6608019  
MOBEL: +91-981-1831442  
EMAIL: anuj@everlight.com

**MALAYSIA**

EVERLIGHT OPTOELECTRONICS(M) SDN BHD  
B-04-20 Krystal Point,  
303 Jalan Sultan Azlan Shah,  
11900 Penang, Malaysia  
TEL: +60-4-646-4233  
FAX: +60-4-646-5233  
EMAIL: inquiry@everlight-pg.com.my

**SINGAPORE**

EVERLIGHT ELECTRONICS SINGAPORE PTE LTD  
50 Tagore Lane , #04-11D,  
Entrepreneur Centre, Singapore 787494.  
TEL: +65-6511-2965  
FAX: +65-6338-5486  
EMAIL: contact@everlight.com.sg

**AMERICA****TEXAS USA**

EVERLIGHT AMERICAS INC.  
3220 Commander Drive, Suite 100  
Carrollton,Texas, 75006, United States  
TEL: +1-972-490-4008  
FAX: +1-972-490-5009  
EMAIL: salesmarketing@everlightamericas.com

**CALIFORNIA USA**

Everlight Americas Inc. Ontario, California Office  
4237 East Airport Dr.  
Ontario, California 91761  
Phone: 909 937-6070  
Fax: 909 937-7619  
EMAIL: salesmarketing@everlightamericas.com

**EUROPE****GERMANY, HQ**

EVERLIGHT ELECTRONICS EUROPE GMBH  
Siemensallee 84, Building 7302, 5F  
76187 Karlsruhe, Germany  
TEL: +49-721-82447-3  
FAX: +49-721-82447-40  
EMAIL: Info@everlight-eu.de

**GERMANY, MUNICH**

EVERLIGHT ELECTRONICS EUROPE GMBH  
Rote-Kreuz-Strasse 8, D-85737 Ismaning, Germany  
TEL: +49-89-9400336-0  
FAX: +49-89-9400336-29  
EMAIL: info@everlight-eu.de

**HEADQUARTERS**

No. 6-8, Zhonghua Rd., Shulin Dist., New Taipei City, Taiwan 23860  
TEL: +886-2-2685-6688 FAX: +886-2-2685-6699

[www.everlight.com](http://www.everlight.com)