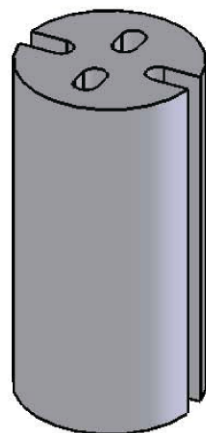
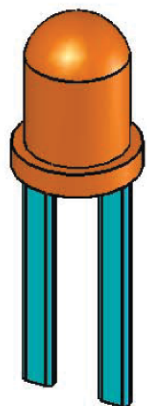
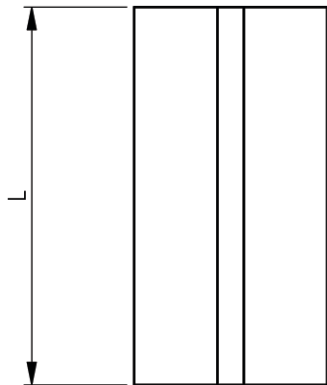
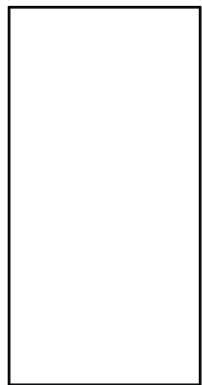
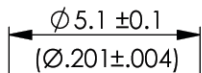
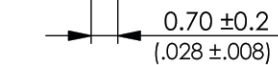
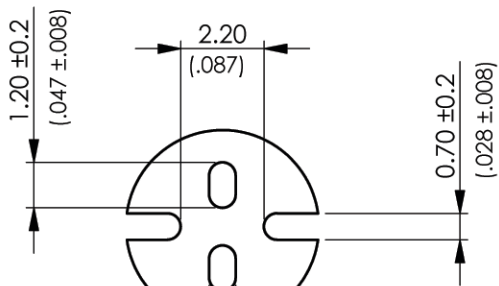
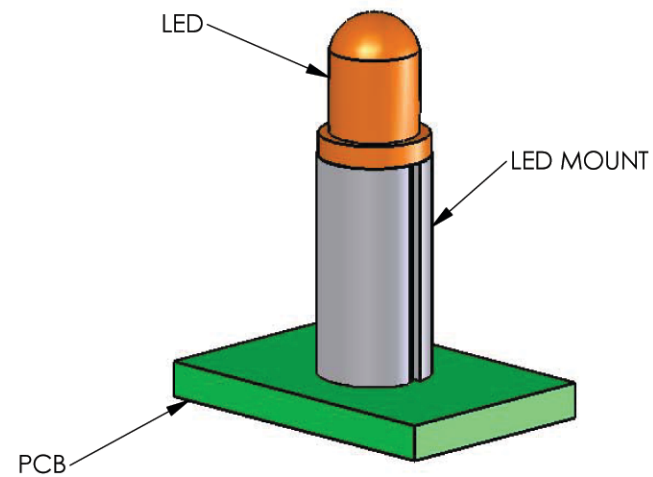


AVAILABLE BY SPECIAL ORDER- NAFTA REGION ONLY



REV.	MODIFICATION.	DATE	DRN
01	NEW DWG	25/05/01	JPM
02	SCN04-093	23/09/04	OW
03	SCN04-096	01/10/04	OW
04	SCN04-100	14/10/04	OW
05	ECN05-021	26/01/05	OW
06	ECR05-096	31/08/05	OW



TYPICAL APPLICATION VIEW

INFORMATION CONTAINED IN THIS DOCUMENT IS CONFIDENTIAL TO RICHCO INTERNATIONAL Co. Ltd. AND MAY NOT BE DISCLOSED OR REPRODUCED IN WHOLE OR PART WITHOUT THEIR WRITTEN CONSENT

Richco

METRIC GENERAL TOLERANCES ±0.25 ARE PRIMARY UNLESS OTHERWISE STATED
 1 DECIMAL PLACE ±
 2 DECIMAL PLACES ±
 ANGULAR ±1°

IMPERIAL GENERAL TOLERANCES ±0.010 ARE FOR REFERENCE UNLESS OTHERWISE STATED
 1 DECIMAL PLACE ±
 2 DECIMAL PLACES ±
 ANGULAR ±1°

- NOTES:
 1) FOR USE WITH 5mm , T-1 3/4 LEDS.
 2) ALL PRIMARY DIMENSIONS IN mm,
 SECONDARY DIMENSIONS IN INCHES.

MATERIAL:	PVC UL94 V-0 (RMS-176)	COLOUR:	BLACK
TITLE:	LED MOUNTS	PART No:	LEDM-1-XX

PART No.	LENGTH	DRG No:	NPR REF:	SIZE	
LEDM-1-02 - LEDM-1-30	2.0mm - 30mm	786-9022	N/A	A4	
		DRN	DATE	CHKD	DATE
		OW	14/10/04	NJB	14/10/04
				SCALE	SHEET No
				NTS	1 OF 1