

### Features

- Low Loss
- Excellent Return Loss
- High Rejection

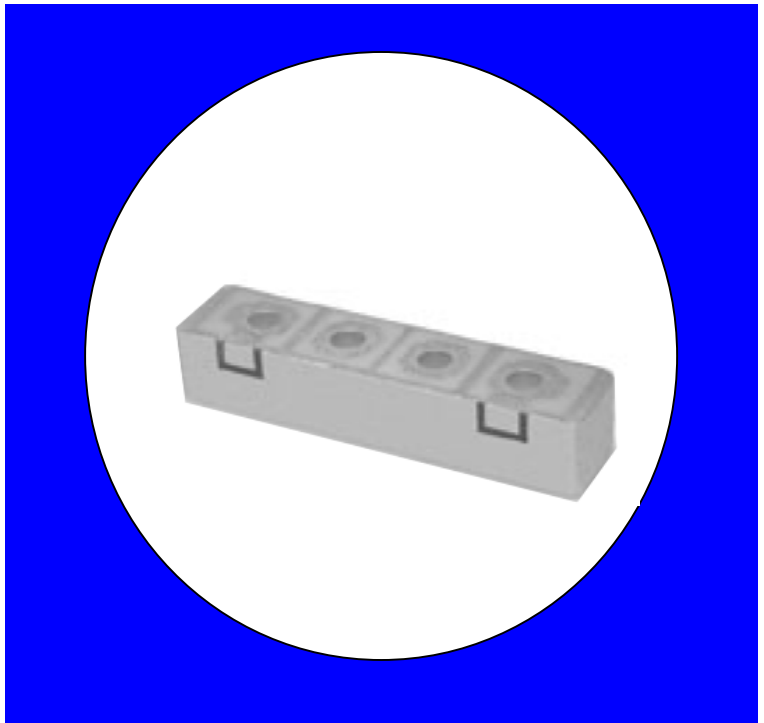
### Description

Surface mount, silver (Ag) coated ceramic filter. Developed for use in infrastructure and subscriber InMarSat applications.

Weight: 6.9 grams typical

Material: Filter is composed of a ceramic block plated with Ag.

Filter complies with RoHS standards.



### Electrical Specifications

Parameter	Frequency (MHz)	Typical @ 25°C	Spec. @ 25°C
Insertion Loss	1625.5-1660.5	1.2 dB	1.5 dB max
Forward Return Loss	1625.5-1660.5	17.0 dB	12.0 dB min
Attenuation:	1545	32.0 dB	30.0 dB min
Attenuation:	1576.5	22.0 dB	20.0 dB min
Attenuation:	1710	23.0 dB	20.0 dB min
Power Rating			1W
Impedance			50Ω

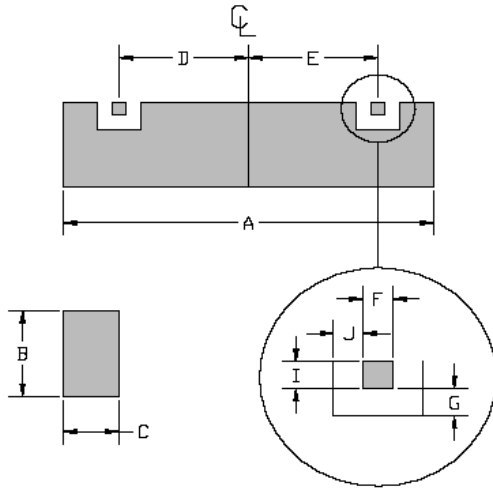
Note: Supplier shall test each filter to the critical electrical specifications of the above table. Any subsequent audits may deviate from in value due to measurement repeatability among different test systems. Such deviations shall not exceed the following limits:

Specification Allowance	
Insertion Loss	0.1 dB
Return Loss	1.0 dB
Stopbands	1.0 dB

\*This product is covered by one or more of the following U.S. and foreign patents including: US 4,692,726;US 4,742,562; US 4,800,348;US 4,829,274;US 5,146,193;EP 0573597;DE 0573597;FR 0573597;JP 508149/92;KR 142171;US 5,162,760;US 5,218,329;US 5,250,916;US 5,327,109;US 5,488,335;CA 2114029;FR 9306297;GB 2273393;JP 3205337;KR 115113;CN 93106228.4;US 5,512,866;EP 0706719;DE 0706719;FR 0706719;GB 0706719;CN 95190359.4;US 5,602,518;US 5,721,520;US 5,745,018;EP 0910875;DE 0910875;DK 0910875;FR 0910875;GB 0910875;IE 0910875;JP 505182/98;KR 10-323013;US 5,994,978;US 6,462,629;CN 00810420.4;US 6,559,735;US 6,650,202;US 6,834,429. Other US and foreign patents pending.

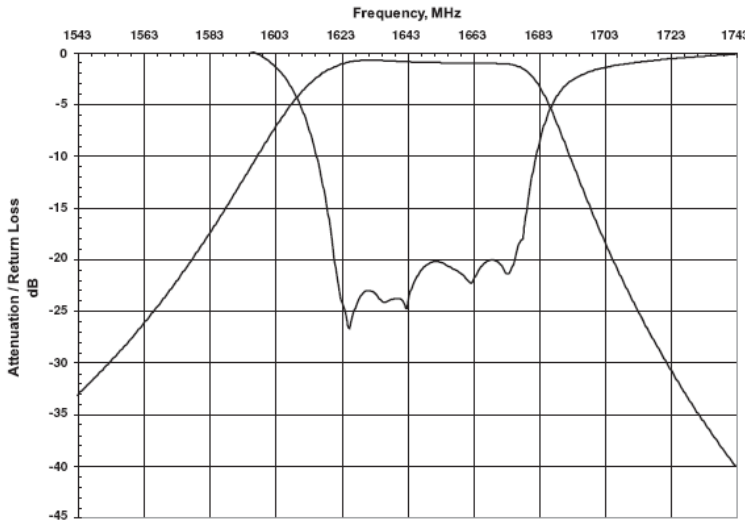
\*CTS Corporation 2006 reserves all copyrights in the layout, design and configuration of the patterns on this product.\*

## Mechanical Drawing

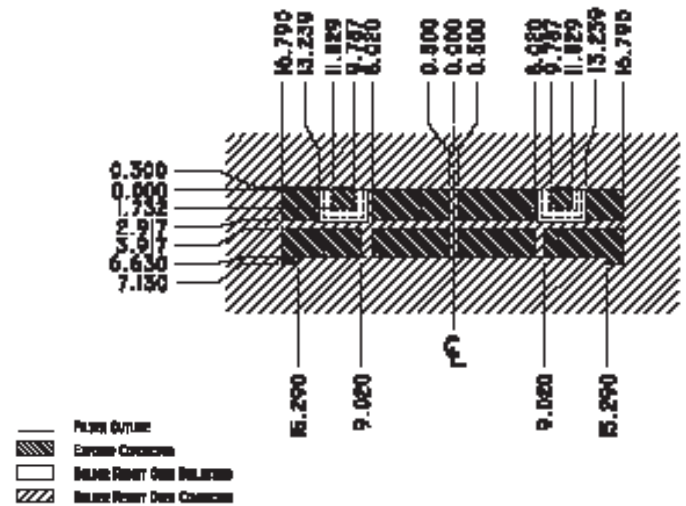


Dim	Nominal (mm)	Tolerance (mm) +/- or max
A	33.58	max
B	6.63	max
C	7.85	max
D	10.808	0.127
E	10.808	0.127
F	2.642	0.127
G	0.635	0.127
H		
I	2.032	0.127
J	0.610	0.127

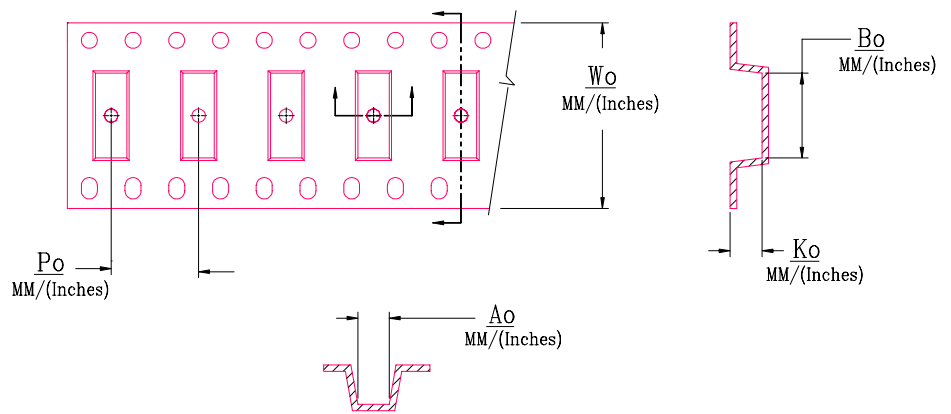
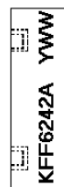
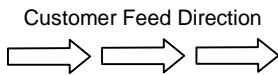
## Electrical response



## PCB Layout



## Packaging and Marking



DIMENSION	UNITS	SPECIFICATION
REEL DIAMETER	mm	330
REEL WEIGHT	kg	2.25
REEL QUANTITY	ea.	250

MODEL NO.	$W_o$	$A_o$	$B_o$	$K_o$	$P_o$
KFF6242A	56.0/(2.205)	7.24/(0.285)	33.53/(1.320)	7.82(0.308)	16.0/(0.630)