

Ceramic Monoblock Duplex Filter



Model KFF6169A Technical Data

Features:

- High Power
- Exceptional Performance
- Rugged Bracket Mounting

Description and Applications:

A high power duplexer suitable for trunking applications in the 800MHz band.



Electrical Specifications

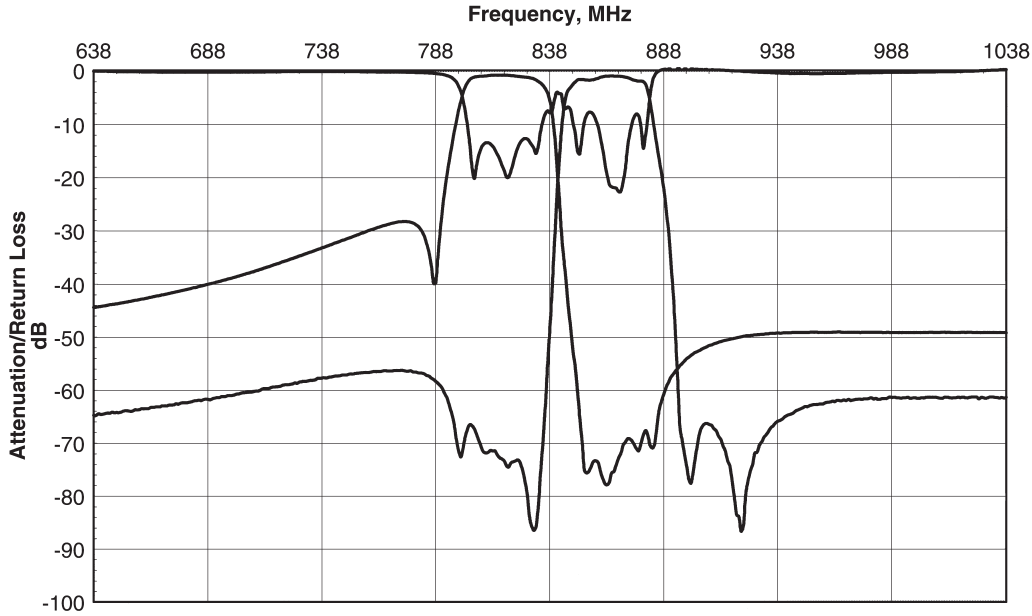
Antenna to TX Response	Frequency	Specifications @ 25° C
Insertion Loss	804 MHz to 824 MHz	2.5 dB max.
Return Loss		9.0 dB min.
Attenuation	850 MHz to 870 MHz	50 dB min.
Antenna to RX Response		
Insertion Loss	850 MHz to 870 MHz	2.5 dB max.
Return Loss		6.0 dB min.
Attenuation	804 MHz to 824 MHz	50 dB min.
Power Rating		5 W
Impedance		50 Ω

NOTE: Supplier shall test each filter to the critical electrical specifications listed above or better. Any subsequent audits may deviate due to measurement repeatability among different test systems. Such deviations shall not exceed the following limits:

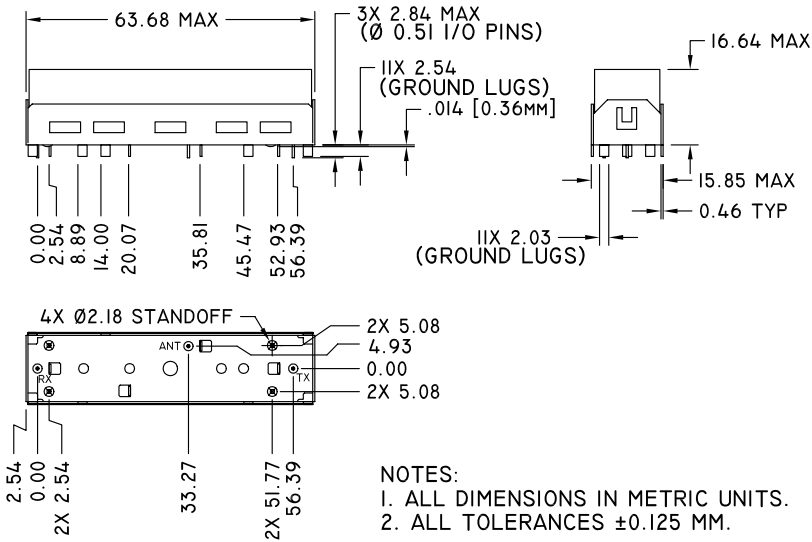
Specification	Typical Allowance
Insertion Loss	0.1 dB
Return Loss	1.0 dB
Stopbands	1.0 dB

Rev. 2

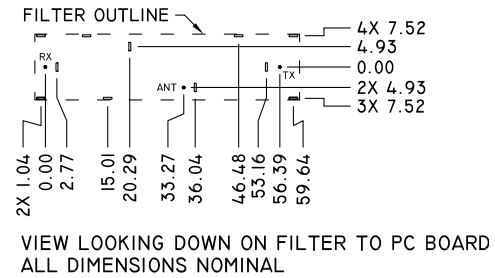
Typical Response Curve



Mechanical Dimensions

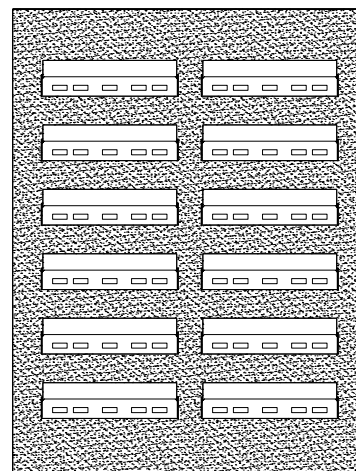


PC Board Layout



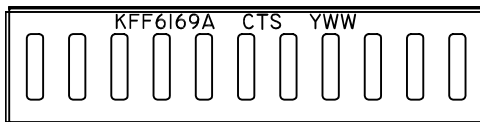
Packaging

This product is shipped in pre-formed foam trays.



Part Marking

Y = LAST DIGIT OF YEAR
WW = SEQUENTIAL WEEK NUMBER



Contact Information:

CTS WIRELESS COMPONENTS, INC. / 171 Covington Drive / Bloomingdale, IL 60108
PHONE: (800) 757-6686 / www.ctscorp.com

Document Control #6287045Y01 Rev 2

Date of Origin 02/22/01

Date of Revision 03/26/01

THIS DATA SHEET IS NOT AN OFFER FOR SALE AND SHALL NOT OBLIGATE CTS TO SELL THE PRODUCTS DESCRIBED HEREIN OR ANY OTHER PRODUCTS. CTS MAY, IN ITS SOLE DISCRETION, MODIFY OR DISCONTINUE THE SALE OF ITS PRODUCTS AT ANY TIME WITHOUT NOTICE. CTS MAKES NO WARRANTY, INCLUDING WARRANTIES OF MERCHANTABILITY OR FITNESS FOR A PARTICULAR PURPOSE, WITH RESPECT TO THE PRODUCTS REFERENCED OR INFORMATION PROVIDED HEREIN.

CTS® is a registered trademark of CTS Corporation.