

## WADI rail cable gland

K160-1xxx-zz

|                   |                                |
|-------------------|--------------------------------|
| Dome nut          | Brass CuZn39Pb3, nickel-plated |
| Sealing insert    | TPE TPS                        |
| Gland body        | Brass CuZn39Pb3, nickel-plated |
| O-ring            | Nitrile rubber NBR             |
| Connecting thread | metric, as per EN 60423        |



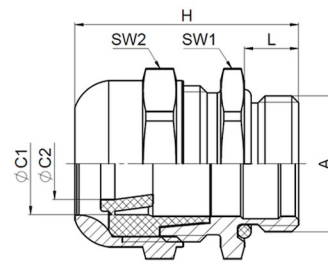
### Properties

- tested fire resistance Integrity criterion E30 according to EN 45545-3
- material of the sealing insert fulfills superior claims on fire protection according to UL 94 V-0 and EN 45545-2, R22: HL3 / R23: HL3
- large-area sealing protects the cable
- increased anchorage with high retention
- wide sealing and clamping range
- halogen-free
- high UV, ozone and weather resistance

Temperature range -60°C / +100 °C (dynamic)

Protection grade IP66 / IP67 / IP69


Test standard  
EN 62444  
EN 45545-2  
EN 45545-3



### Features

Connecting thread standard length

| A           | ØC       | Ø C1    | Ø C2          | L   | SW1 | SW2 | H    | VPE | Part No.     |
|-------------|----------|---------|---------------|-----|-----|-----|------|-----|--------------|
| M12x1,<br>5 | 3 - 8    | 3 - 5   | 5 - 8         | 6,5 | 16  | 16  | 25,5 | 100 | K160-1012-00 |
| M16x1,<br>5 | 5 - 10,5 | 5 - 7,5 | 7,5 -<br>10,5 | 7,0 | 20  | 20  | 31,5 | 100 | K160-1016-00 |

| A           | ØC             | Ø C1           | Ø C2           | L    | SW1 | SW2 | H    | <br>VPE | Part No.     |
|-------------|----------------|----------------|----------------|------|-----|-----|------|--|--------------|
| M20x1,<br>5 | 8 - 15         | 8 - 10,5       | 10,5 -<br>15   | 8,0  | 25  | 25  | 33   | 50   | K160-1020-00 |
| M25x1,<br>5 | 12,5 -<br>20,5 | 12,5 -<br>15,5 | 15,5 -<br>20,5 | 8,0  | 32  | 32  | 35,5 | 50   | K160-1025-00 |
| M32x1,<br>5 | 17 -<br>25,5   | 17 -<br>20,5   | 20,5 -<br>25,5 | 9,0  | 36  | 36  | 40,5 | 25   | K160-1032-00 |
| M40x1,<br>5 | 24 - 33        | 24 - 29        | 29 - 33        | 9,0  | 45  | 45  | 43   | 10   | K160-1040-00 |
| M50x1,<br>5 | 31 - 42        | 31 -<br>37,5   | 37,5 -<br>42   | 10,0 | 55  | 55  | 47,5 | 5  | K160-1050-00 |
| M63x1,<br>5 | 40 - 53        | 40 - 46        | 46 - 53        | 10,0 | 70  | 70  | 53   | 5  | K160-1063-00 |