

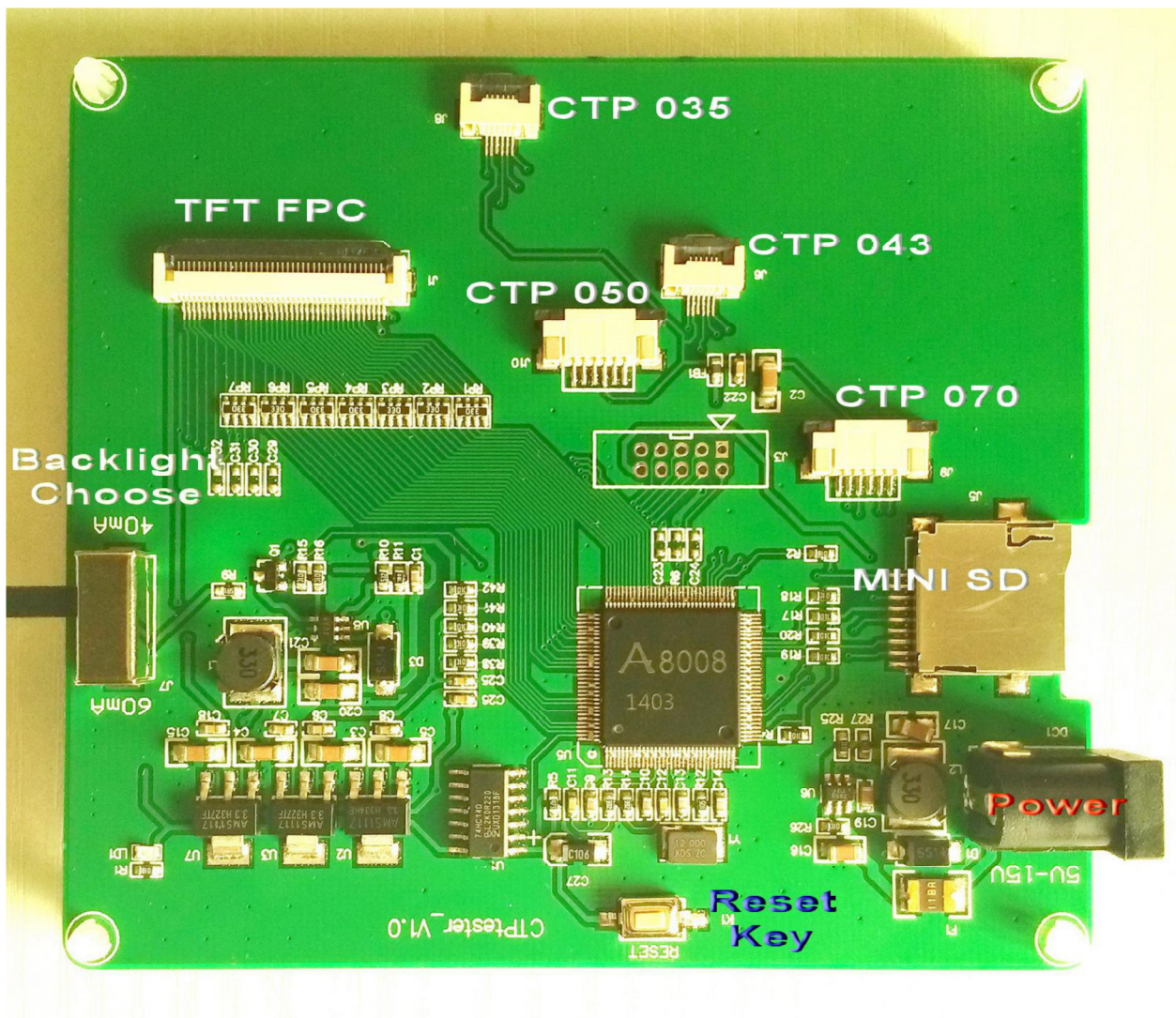
JAZZ-RGB-D3 tester user manual

1, General description

This part is used to test Orient 3.5/4.3/5.0/7.0 TFT+CTP modules for checking CTP performance and TFT displaying effect.

2, Product description

This is a universal PCBA testing board for 3.5/4.3/5.0/7.0 TFT+CTP modules. Customer need change files in SD card and different ports to match different CTP+TFT modules. Refer to connection figure:



Dimension: 100*90*15mm

Input voltage: DC/5-15V, diameter 2.5mm, internal +/external -, common voltage ripple < 20mV.

Please put tester and CTP+TFT module at flat pad.

3, Testing procedures

(1) Load correct files to SD according to tested CTP+TFT module

(2) Connect CTP+TFT module to tester well. Note: the connection position is unique for each module.

(3) Considering CTP has high requirement for voltage and any unqualified power module may result in CTP abnormal, strongly recommend our dedicated power supplier. DC/5-15V, common voltage ripple < 20mV.

(4) Below is power on figure, touch and slide left-to-right to enter main menu.



(5) Main menu



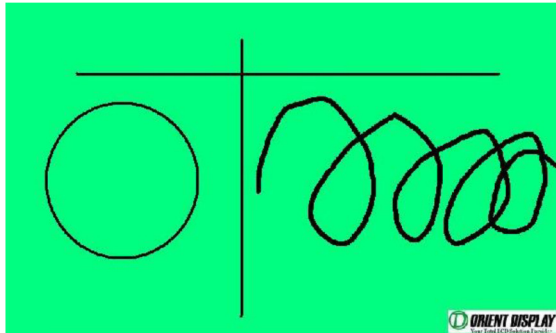
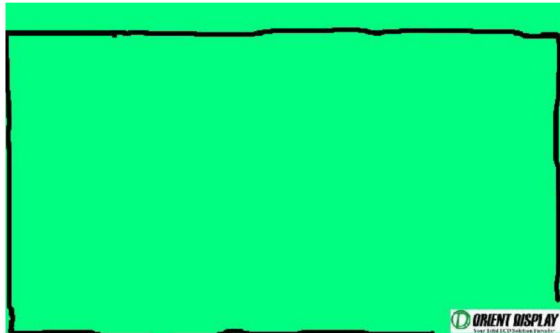
Below operations for testing CTP:

[1] Sensitivity of 4 edges.


[2] Linearity of horizontal and vertical lines.

[3] Smoothness for making circle, response time for multi-circles.

[4] Multi-touching detected at same time



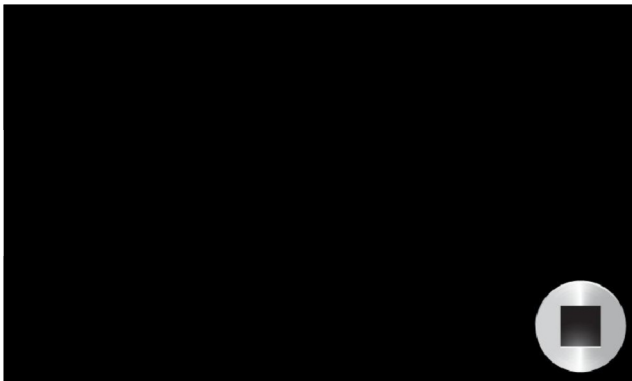
(6) TFT response time testing

Click  at right-down corner, enter TFT response time testing figure:

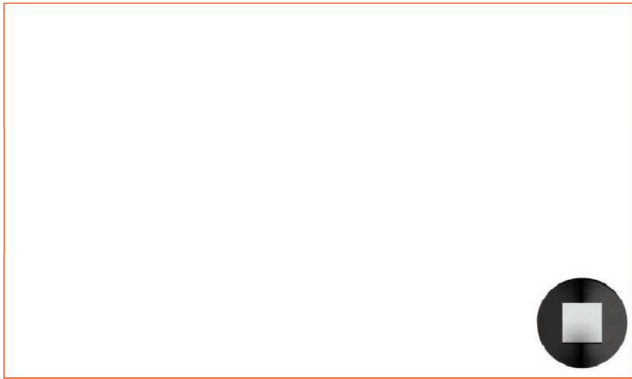
Touching enters below figure:



Color checking



Bright dot checking



Dark dot checking



RGB color checking

Note:

- 1, Sliding finger to switch different picture.
- 2, Return to CTP main menu by clicking right-down corner icon.