

Wiha Insulated Pliers & Cutters

Insulated Bent Nose Pliers

Angled 40°



1000volt

SHOP

328 Bent Nose Pliers With Cutters. Insulation According to VDE 0682/part 201, EN/IEC 60900, ASTM F-1505-01, NFPA70E, up to 1000 volt. Individually Tested.

Drop-forged from special tool steel, cutters additionally induction hardened (approx. 60 HRC), chrome-nickel plated, mirror-polished. Ergonomic comfort grip with slip guard. Half-round jaws, serrated gripping surface, nose bent 40°.

Item No.	mm	Inch	Cutting Capacity Copper AWG	Pkg.	wt.
328 04 Z05120006	200	8.0	#8	1	.43
328 07 Z05116006	160	6.3	#10	1	.32

Round Nose Pliers



1000volt

SHOP

328 Round Nose Pliers. Insulation According to VDE 0682/part 201, EN/IEC 60900, ASTM F-1505-01, NFPA70E, up to 1000 volt. Individually Tested.

Drop-forged from special tool steel, individually induction hardened, chrome and nickel plated, mirror-polished. Ergonomic comfort grip with slip guard. Serrated jaws.

Item No.	mm	Inch	Pkg.	wt.
328 70 Z09016006	160	6.3	1	.31

Insulated Long Flat Nose Pliers



1000volt

SHOP

328 Long Flat Nose Pliers. Insulation According to VDE 0682/part 201, EN/IEC 60900, ASTM F-1505-01, NFPA70E, up to 1000 volt. Individually Tested. DIN ISO 5745

Extra long head. Serrated Jaws are induction hardened. Special CV tool steel forgings, Chrome finish. Two component Soft Grip handles. Use for Gripping and right-angle bending of wires and sheet metal parts.

Item No.	mm	Inch	Pkg.	wt.
328 10 Z07016006	160	6.3	1	.39

Insulated Stripping Pliers



1000volt

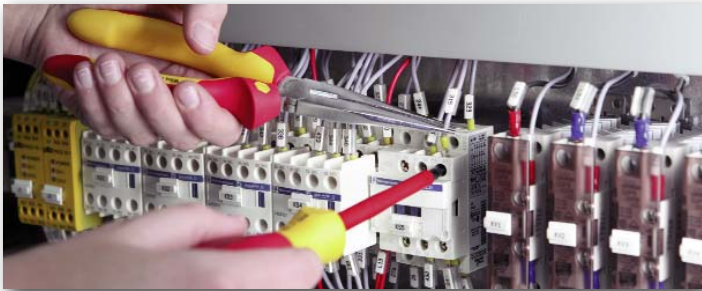
SHOP

328 Stripping Pliers. Insulation According to VDE 0682/part 201, EN/IEC 60900, ASTM F-1505-01, NFPA70E, up to 1000 volt. Individually Tested.

Heavy duty forged with induction hardened cutting edges for even stripping of insulation. Drop-forged from special tool steel, chrome and nickel plated, mirror-polished. Ergonomic comfort grip with slip guard. Spring and adjusting screw, for stripping up to Ø 5mm/#4 Awg.

Item No.	mm	Inch	Stripping Capacity Copper AWG	Pkg.	wt.
328 60 Z55016006	160	6.3	#4 - #28	1	.36

1000 Volt Rated



Warning! Insulated tools are not intended for use on live or energized circuits. Always disconnect and de-energize all equipment & circuits. NEVER! work on live or energized circuits or equipment.

Use & Care Guide For Insulated Tools: Store tools to minimize risk of damage to insulation. Inspect insulation prior to each use of any insulated tool. If you doubt the integrity of the insulation destroy the tool or have it retested. Use insulated tools where the ambient temperature is between -20 to +70° C. Have a qualified safety technician inspect and re-certify tools annually for safe use.