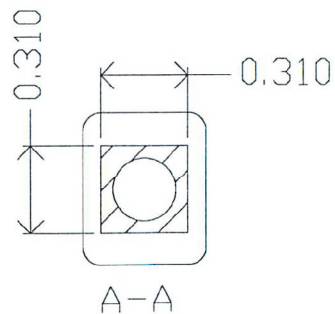
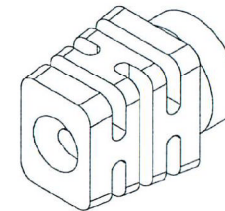
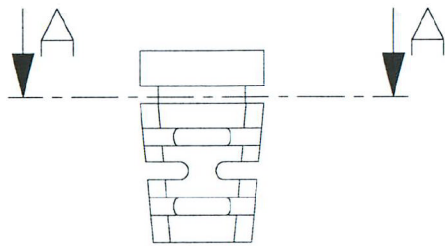
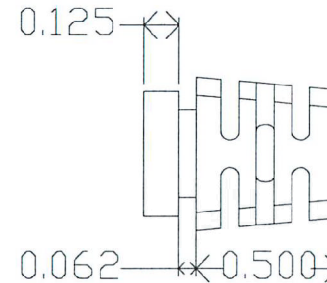
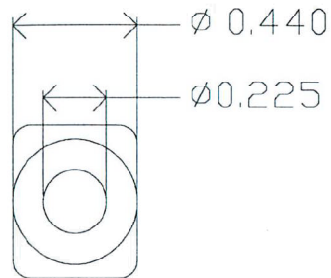


REV. NO.		REVISIONS	DATE	APPROVED
ZONE	REV.	DESCRIPTION		



MOLD MATERIAL: ISC P/N: 5000214, PVC, M1472, Blk, RoHS

**ISC ENGINEERING**  
**CONTROLLED COPY**  
 Rich Fierro 09/06/2016

Dimensions are subject to change.  
 PROPRIETARY AND CONFIDENTIAL  
 THE INFORMATION CONTAINED IN THIS DRAWING IS THE SOLE PROPERTY OF ISC ENGINEERING. ANY REPRODUCTION IN PART OR AS A WHOLE WITHOUT THE WRITTEN PERMISSION OF ISC ENGINEERING IS PROHIBITED.

		DIMENSIONS ARE IN INCHES		NAME	DATE	ISC Engineering 4351 Schaefer Ave, Chino, CA 91710 Ph: 909-596-3315 Fax: 909-596-3335 www.iscengineering.com www.overmoldtooling.com
		TOLERANCES:		R. FIERRO	04/20/04	
		FRACTIONAL±		CHECKED		Rectangular Strain Relief 1465080-225-B-310x310-440-0
		ANGULAR: MACH± BEND±		ENG APPR.		
		TWO PLACE DECIMAL±		MFG APPR.		
		THREE PLACE DECIMAL±		Q.A.		
		MATERIAL	--	COMMENTS:		1465080-225-B-310x310-440-0
		FINISH	--			SIZEDWG. NO. 1467248
	NEXT ASSY USED ON					REV.
	APPLICATION	DO NOT SCALE DRAWING				SCALE:2:1 WEIGHT: SHEET 1 OF 1