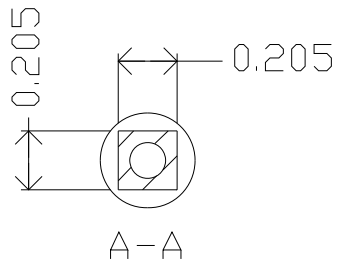
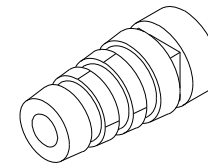
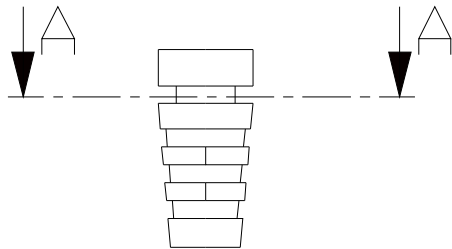
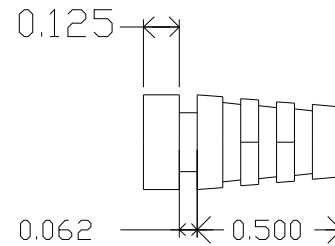
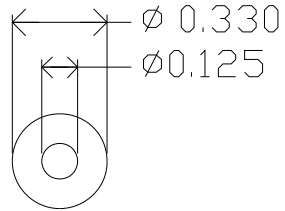


ZONE		REV.	REVISIONS	DESCRIPTION	DATE	APPROVED



MOLD MATERIAL: ISC P/N: 5000214, PVC, M1472, BLK, RoHS

Dimensions are subject to change.
 PROPRIETARY AND CONFIDENTIAL

THE INFORMATION CONTAINED IN THIS DRAWING IS THE SOLE PROPERTY OF ISC ENGINEERING. ANY REPRODUCTION IN PART OR AS A WHOLE WITHOUT THE WRITTEN PERMISSION OF ISC ENGINEERING IS PROHIBITED.

DIMENSIONS ARE IN INCHES		NAME	DATE	ISC Engineering 4351 Schaefer Ave, Chino, CA 91710 Ph: 909-596-3315 Fax: 909-596-3335 www.iscengineering.com www.overnoldtooling.com	
TOLERANCES:		DRAWN	R. FIERRO		3/18/04
FRACTIONAL±		CHECKED			
ANGULAR: MACH± BEND±		ENG APPR.			
TWO PLACE DECIMAL±		MFG APPR.			
THREE PLACE DECIMAL±		Q.A.			
MATERIAL --		COMMENTS:		Round, Solidrib SR	
NEXT ASSY	USED ON	FINISH --		1461040-.125-B-205x205-330-0	
APPLICATION		DO NOT SCALE DRAWING		SIZE DWG. NO. A 1467063 REV.	
				SCALE: 2:1 WEIGHT: SHEET 1 OF 1	

