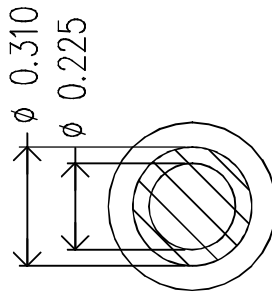
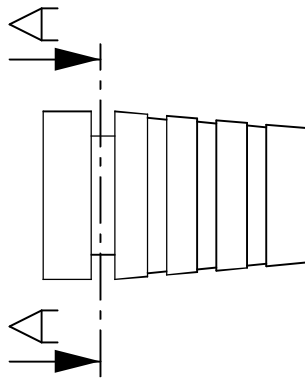
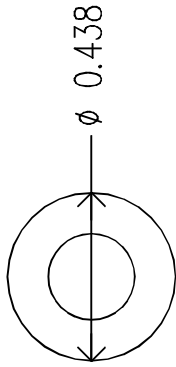
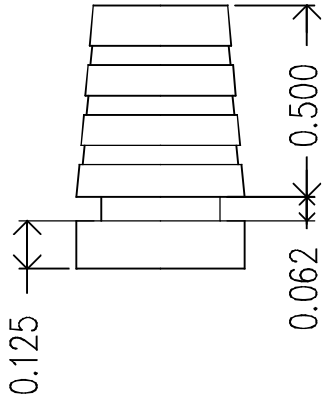
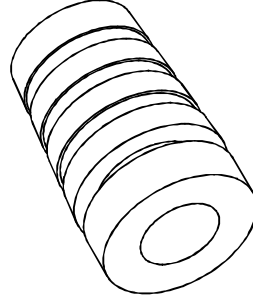


REVISIONS		DATE	APPROVED
ZONE	REV.		



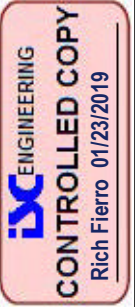
A-A



MOLD MATERIAL: ISC P/N: 5000214, PVC, M1472, Block, RoHS

DRAWN	NAME	DATE	ISC Engineering
R FIERRO	R FIERRO	06/25/07	4351 Schaefer Ave, Chino, CA 91710
CHECKED			Ph: 909-596-3315 Fax: 909-596-3335
ENG APPR.			www.iscengineering.com
MFG APPR.			www.overtmodtooling.com
D.A.			
COMMENTS:			
DO NOT SCALE DRAWING			
APPLICATION			
NEXT ASSY			
USED ON			
FINISH			
MATERIAL	---		
TWO PLACE DECIMAL	±		
THREE PLACE DECIMAL	±		
ANGULAR: MACH ±	BEND ±		
FRACTIONAL ±			
DIMENSIONS ARE IN INCHES			

Dimensions are subject to change.
 PROPRIETARY AND CONFIDENTIAL
 THE INFORMATION CONTAINED IN THIS DRAWING IS THE SOLE PROPERTY OF ISC ENGINEERING. ANY REPRODUCTION IN PART OR AS A WHOLE WITHOUT THE WRITTEN PERMISSION OF ISC ENGINEERING IS PROHIBITED.



SCALE: 2:1	WEIGHT:
SIZE: A	REV.:
DWG. NO. 1460053	
1461040-225-B-310-440-0	