

# IH.N | Tapered handles

Technopolymer, with lens



## MATERIAL

High-resilience polyamide based (PA) technopolymer, black colour, matte finish.

## MAGNIFYING LENS

Transparent polyamide based (PA-T) technopolymer. Press-fit assembly. It improves the visibility of the labels.

## STANDARD EXECUTION

Plain blind hole.

The elastic coupling, by press-fit assembly on h9 tolerance drawn stock bars, is not affected by vibrations and prevents the handle from slipping off (see Technical data on page A-12).

## ACCESSORIES ON REQUEST

Self-adhesive labels MA. (see page 632) with standard marks and symbols to be ordered separately.

## ASSEMBLY INSTRUCTIONS

1. Fit the handle, without the magnifying lens, onto slight chamfered shaft end and push as far as possible by hand or by means of a small press. Alternatively it is possible to tap the handle with a plastic or wooden mallet until firmly in place. In this case we strongly recommend to use a cloth or other suitable soft material over the product to avoid any surface damage.
2. Stick the self-adhesive label (printed on the adhesive side) to the inner surface of the magnifying lens by pressing from the centre to the external side to avoid air bubbles. Assemble the magnifying lens to the handle face recess by gently tapping with a wooden or plastic mallet, until firmly in place. The label is therefore protected by the watertight magnifying lens.

# SH.N | Spherical knobs

Duroplast, with magnifying lens



## MATERIAL

Phenolic based (PF) Duroplast, black colour, matte finish with equatorial groove.

## MAGNIFYING LENS

Transparent polyamide based (PA-T) technopolymer. Press-fit assembly. It improves the visibility of the labels.

## STANDARD EXECUTION

Glass-fibre reinforced polyamide based (PA) technopolymer self-locking boss, plain blind hole.

The elastic coupling, by press-fit assembly on h9 tolerance drawn stock bars, is not affected by vibrations and prevents the handle from slipping off (see Technical data on page A-12).

## ACCESSORIES ON REQUEST

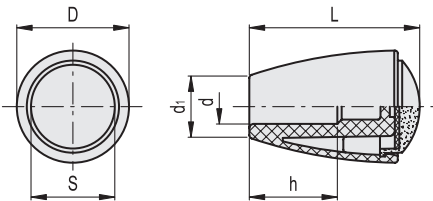
Self-adhesive labels MA. (see page 632) with standard marks and symbols to be ordered separately.

## ASSEMBLY INSTRUCTIONS

1. Fit the handle, without the magnifying lens, onto slight chamfered shaft end and push as far as possible by hand or by means of a small press. Alternatively it is possible to tap the handle with a plastic or wooden mallet until firmly in place. In this case we strongly recommend to use a cloth or other suitable soft material over the product to avoid any surface damage.
2. Stick the self-adhesive label (printed on the adhesive side) to the inner surface of the magnifying lens by pressing from the centre to the external side to avoid air bubbles. Assemble the magnifying lens to the handle face recess by gently tapping with a wooden or plastic mallet, until firmly in place. The label is therefore protected by the watertight magnifying lens.



ELESA Original design

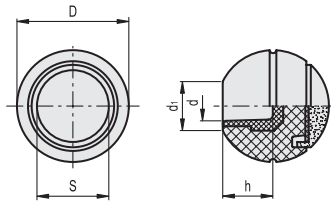


### METRIC

Code	Description	D	L	d	S	d1	h	
27001	IH.40 N-8	27	42	8	20	15	24	10
27101	IH.50 N-10	32	49	10	25	18	25	20



ELESA Original design



### METRIC

Code	Description	D	d	S	d1	h	
55001	SH.35 N-8	35	8	20	15	14	27
55011	SH.35 N-10	35	10	20	15	18	26
55101	SH.40 N-10	40	10	25	18	18	40
55111	SH.40 N-12	40	12	25	18	21	38
55201	SH.45 N-12	45	12	25	21	21	60
55211	SH.45 N-14	45	14	25	21	24	58



Fixed & Revolving handles