

MATERIAL

Glass-fibre reinforced polyamide based (PA) technopolymer, RAL 5001 blue colour, matte finish.

Produced from FDA compliant raw material (FDA CFR.21 and EU 10/2011). The special technopolymer contains additives detectable by means of metal detectors.

MOUNTING

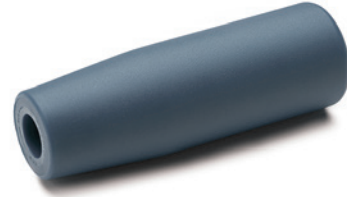
Threaded blind hole.

FEATURES AND APPLICATIONS

The RAL 5001 blue colour is easily visible in case of accidental food contamination. Furthermore the material additives are metal detectable at a cubic particle size of 5mm per side.

In order to improve the detection, the metal detector calibration must take into account the food/substance type at risk of contamination considering the moisture contained in it.

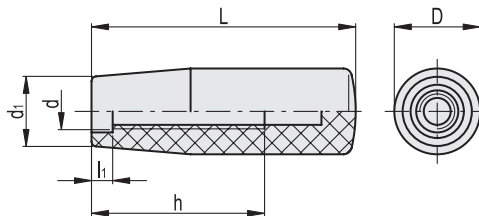
Particularly suitable for applications in the food and pharmaceutical industries.



- 1
- 2
- 3
- 4
- 5
- 6
- 7
- 8
- 9
- 10
- 11
- 12
- 13
- 14
- 15
- 16
- 17
- 18

ELESA Original design

Conversion Table	
1 mm = 0.039 inch	
L	
mm	inch
80	3.15



Code	Description	D	L	d	d1	h	l1	⚖️
199307	I.780/80-M10-MD	26.5	80	M10	21	55	7	45