

I.731+x

Revolving handles

Technopolymer



MATERIAL

Polyamide based (PA) technopolymer, black colour, matte finish.

STANDARD EXECUTION

Zinc-plated steel pin, hexagon socket at threaded end.

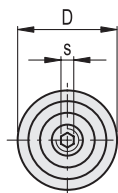
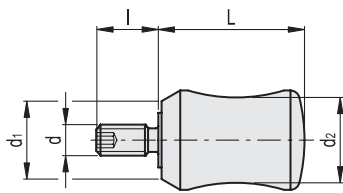
ERGONOMY

The grooves cut into the cylindrical surface allow an effective and ergonomic grip, though necessarily limited to the fingertips, due to the small size of the handle.



ELESA Original design

Conversion Table	
1 mm = 0.039 inch	
11	
mm	inch
20	0.79
23	0.90



Codice	Descrizione	D	L	d6g	d1	d2	l	s	⚖️
24990	I.731/20+x-M4	13.5	20	M4	11	11	8	2	6
24991	I.731/20+x-M5	13.5	20	M5	11	11	10	2.5	9
24995	I.731/23+x-M5	16	23	M5	12.5	13	10	2.5	11

I.741+x

Revolving handles

Technopolymer



MATERIAL

Polyamide based (PA) technopolymer, black colour, matte finish.

STANDARD EXECUTION

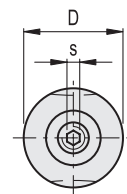
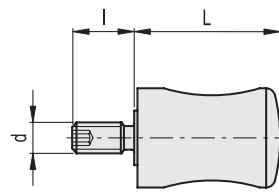
Zinc-plated steel pin, hexagon socket at threaded end.

ERGONOMY

The grooves cut into the cylindrical surface allow an effective and ergonomic grip, though necessarily limited to the fingertips, due to the small size of the handle.



ELESA Original design



Codice	Descrizione	D	L	d6g	l	s	⚖️
25004	I.741/20+x-M4	12	20	M4	8	2	8.5
25005	I.741/20+x-M5	12	20	M5	10	2.5	9
25014	I.741/23-1+x-M4	13	23	M4	8	2	9.5
25015	I.741/23-1+x-M5	13	23	M5	10	2.5	10
25017	I.741/23-2+x-M5	14.5	23	M5	10	2.5	11

- 1
- 2
- 3
- 4
- 5
- 6
- 7
- 8
- 9
- 10
- 11
- 12
- 13
- 14
- 15
- 16
- 17
- 18

Fixed & Revolving handles